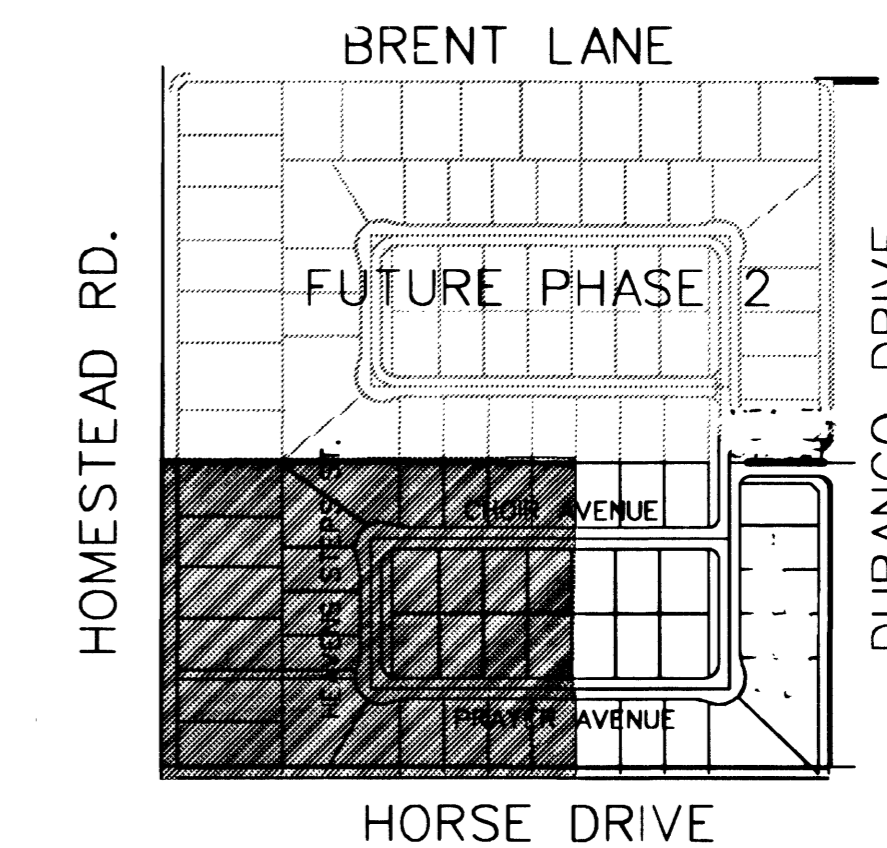
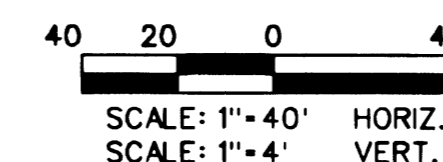
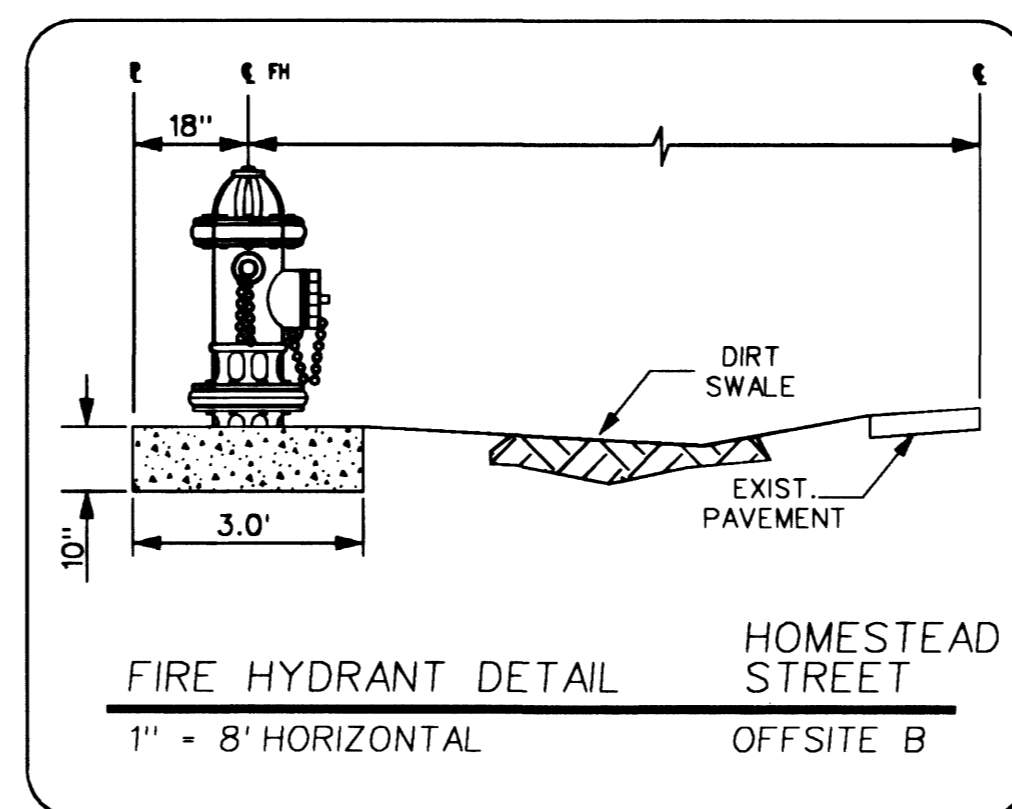
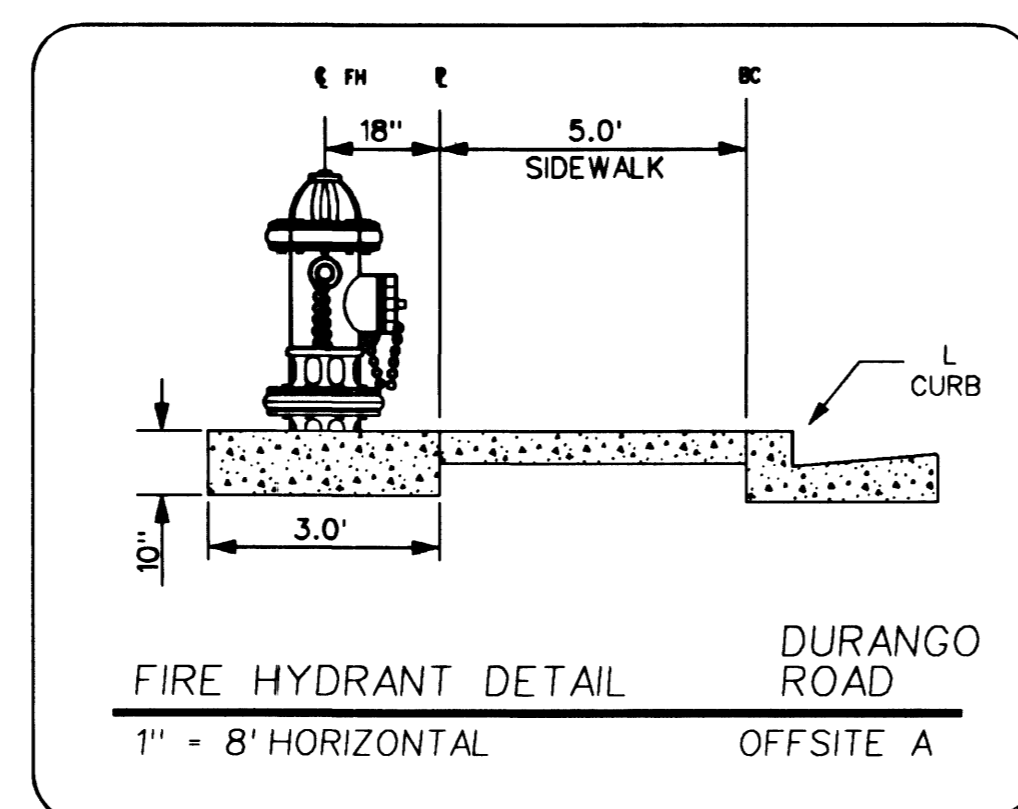
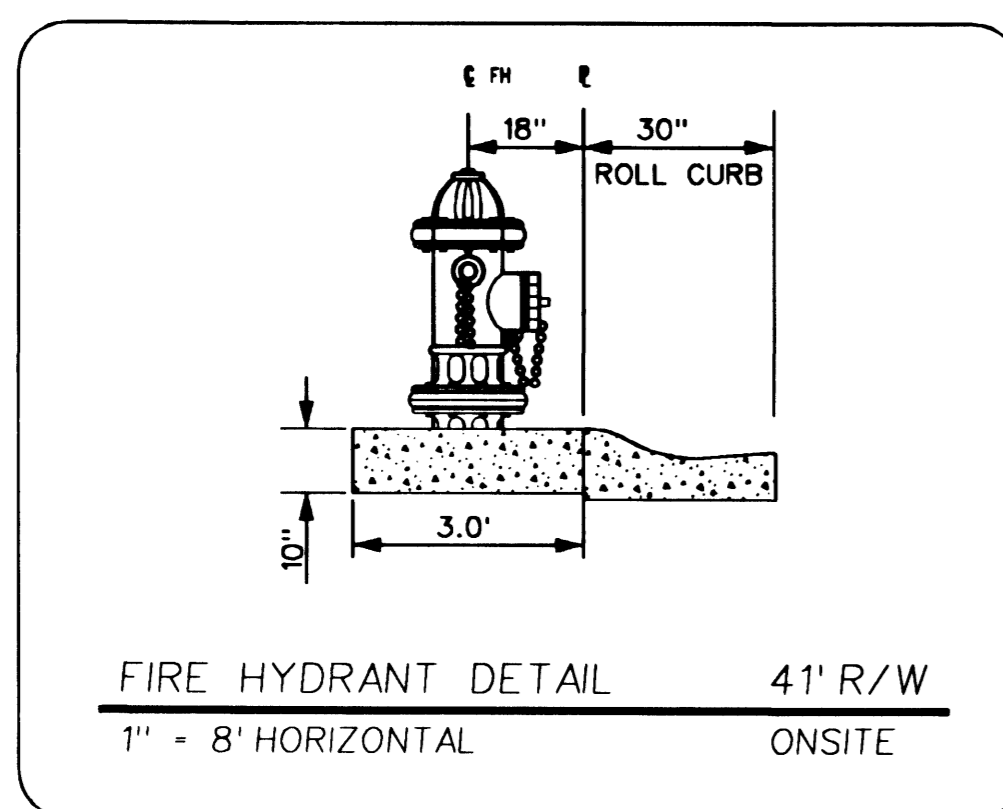


Avoid cutting underground utility lines. It's costly.
Call before you Dig
 1-800-227-2600

Avoid cutting underground utility lines. It's costly.
Call before you Overhead
 1-702-593-6111



LOCATION MAP

CONSTRUCTION NOTE

ALL EXISTING UTILITY STRUCTURES WITHIN CONSTRUCTION AREA SHALL BE ADJUSTED TO MATCH FINISH GRADE (I.E. W.V. BOX, W.M.H. ANNODE BOX, F.H. TEL. BOX, ETC.)

NOTE:

ALL DIMENSIONS TO UTILITIES ARE TO CENTERLINE OF PIPE UNLESS INDICATED OTHERWISE

CONTRACTOR SHALL VERIFY HORIZONTAL AND VERTICAL ALIGNMENT OF EXISTING UTILITIES AND TO NOTIFY THE DESIGN ENGINEER IMMEDIATELY ON ANY DISCREPANCIES PRIOR TO CONSTRUCTION

SEE SHEET C4 FOR LVWWD STANDARD NOTES

SEE SHEET C5 FOR WATER CONSTRUCTION NOTES AND QUANTITIES

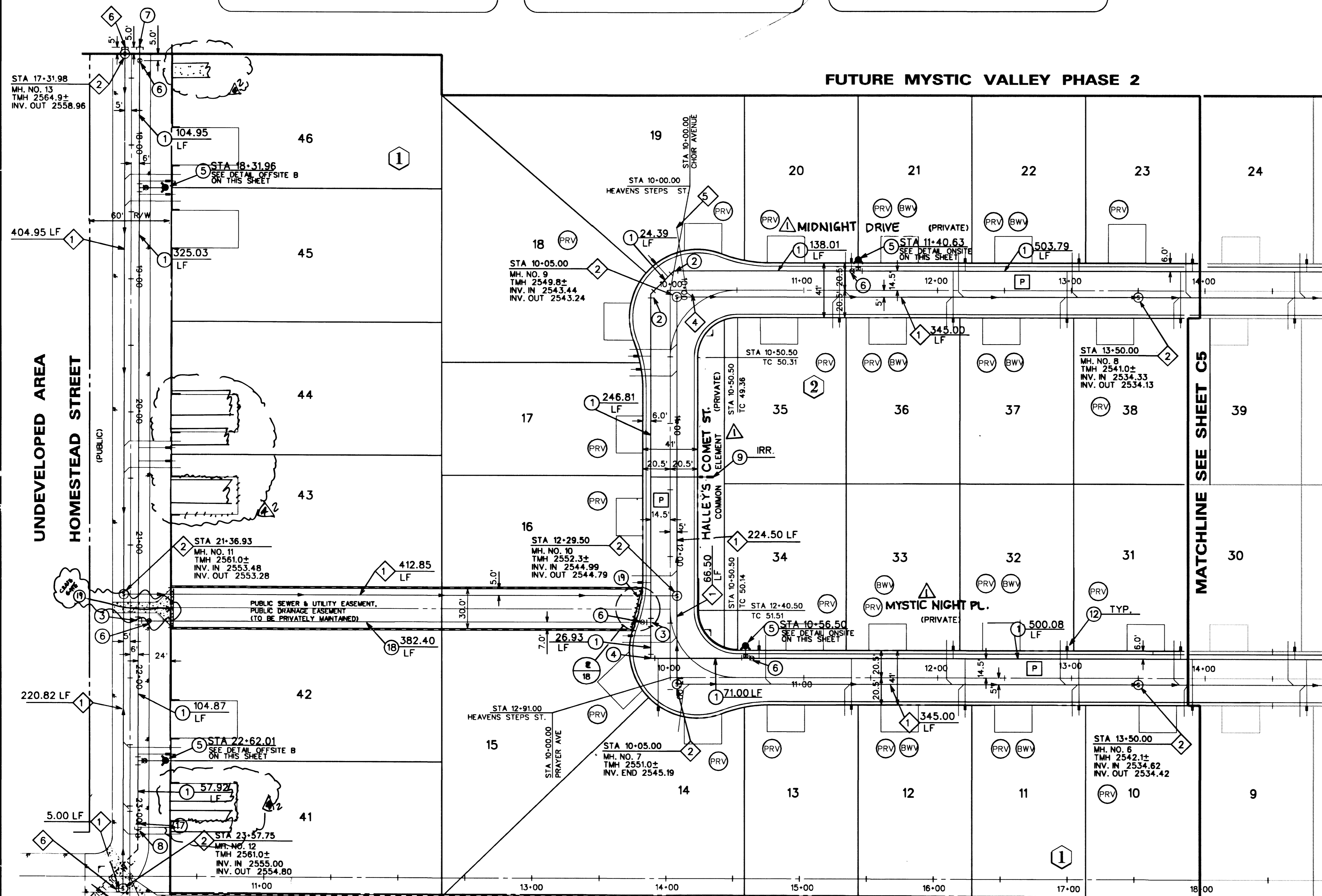
P PRIVATE DRIVE, P.U.E., C.L.V. SEWER EASEMENT AND PUBLIC DRAINAGE EASEMENT (TO BE PRIVATELY MAINTAINED)

SEWER CONSTRUCTION NOTES

- 1 INSTALL 8" PVC PUBLIC SANITARY SEWER LINE
- 2 INSTALL 48" SANITARY SEWER MANHOLE PER DCSWC DWG. SD-1
- 3 REMOVE EXISTING CAP AND CONNECT PROPOSED SEWERLINE TO EXISTING SEWERLINE
- 4 4" WYE
- 5 4" SEWER LATERAL
- 6 INSTALL 8" CAP FOR FUTURE USE
- 7 INSTALL 18" CAP FOR FUTURE USE
- 8 INSTALL 18" PVC PUBLIC SANITARY SEWER
- 9 INSTALL 60" SANITARY SEWER MANHOLE PER DCSWC DWG. SD-1
- 10 INSTALL SEWER BACKWATER VALVE PER DCSWC DWG. SD-29 (SEE DETAIL ON SHEET C4)

SEWER CONTRIBUTION

AVERAGE FLOW - .0115 MGD
 PEAK FLOW - .0380 MGD



PROPOSED SPRING MOUNTAIN RANCH

RICHMOND AMERICAN HOMES OF NEVADA INC.
 7200 WEST PEAK BLVD. #200
 LAS VEGAS, NV 89138
 (702) 368-0044

MASTER UTILITY PLAN (WEST HALF)
 MYSTIC VALLEY PHASE I

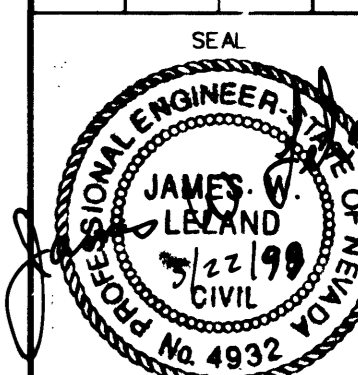
DRAWN BY: G. ROWELL, W. KIM
 DESIGNED BY: E. SERRANO, M. BELEN
 CHECKED BY: M. SEEBECK
 PROJECT NO.: 98-9031-03

DATE: 11/4/98
 SCALE: 1" = 40' HORIZ.

SHEET C6
 6 OF 18 SHEETS
 DRAWING NO. 3074-4599-1

APPROVALS
 REVIEWED BY: CLVFD
 DATE: 3-23-99

APPROVALS
 DATE: 4/23/99



15311 17016 10353