

cutting underground utility lines. It's costly.
 Call before you Dig
 1-800-227-2600

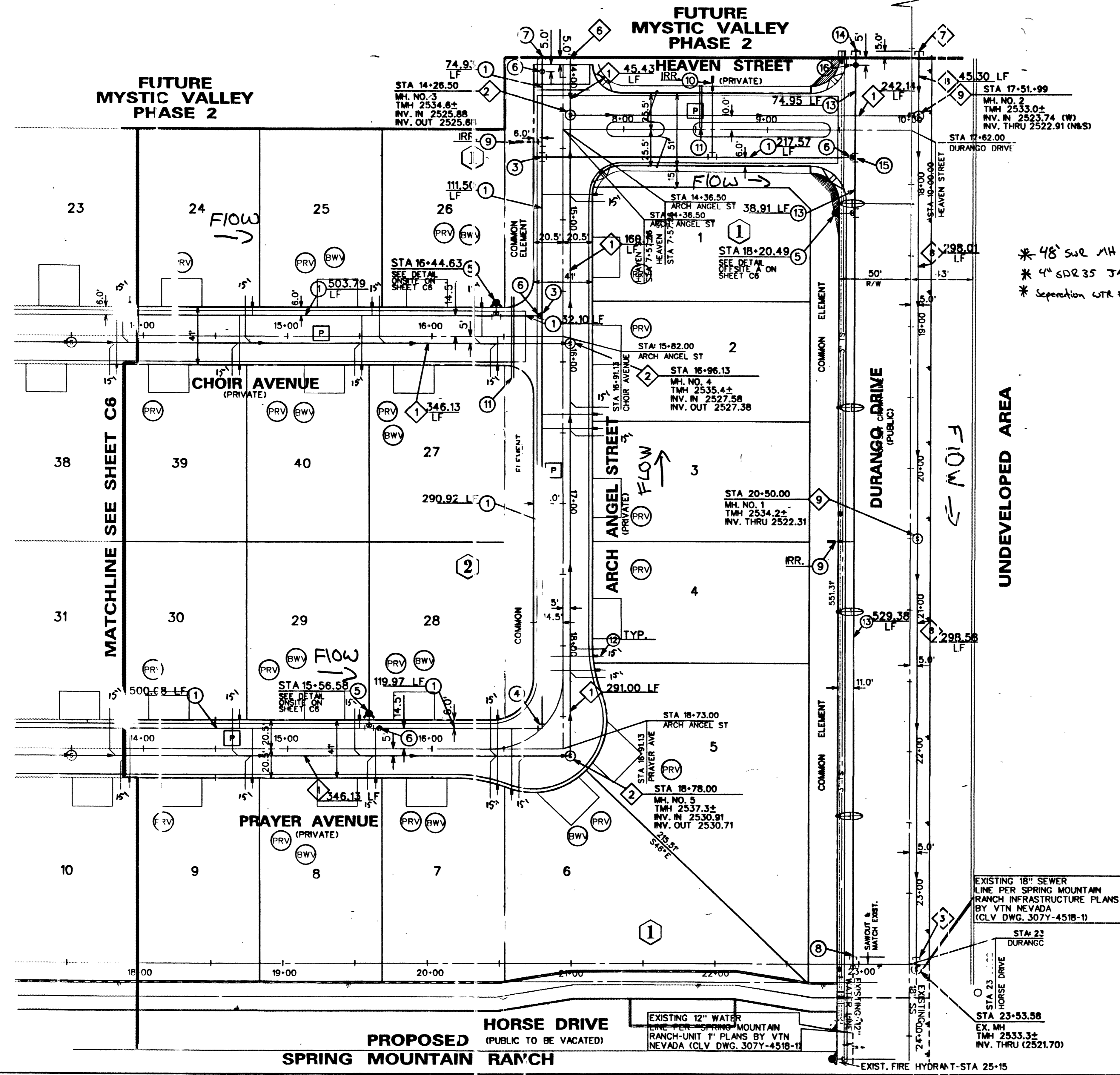
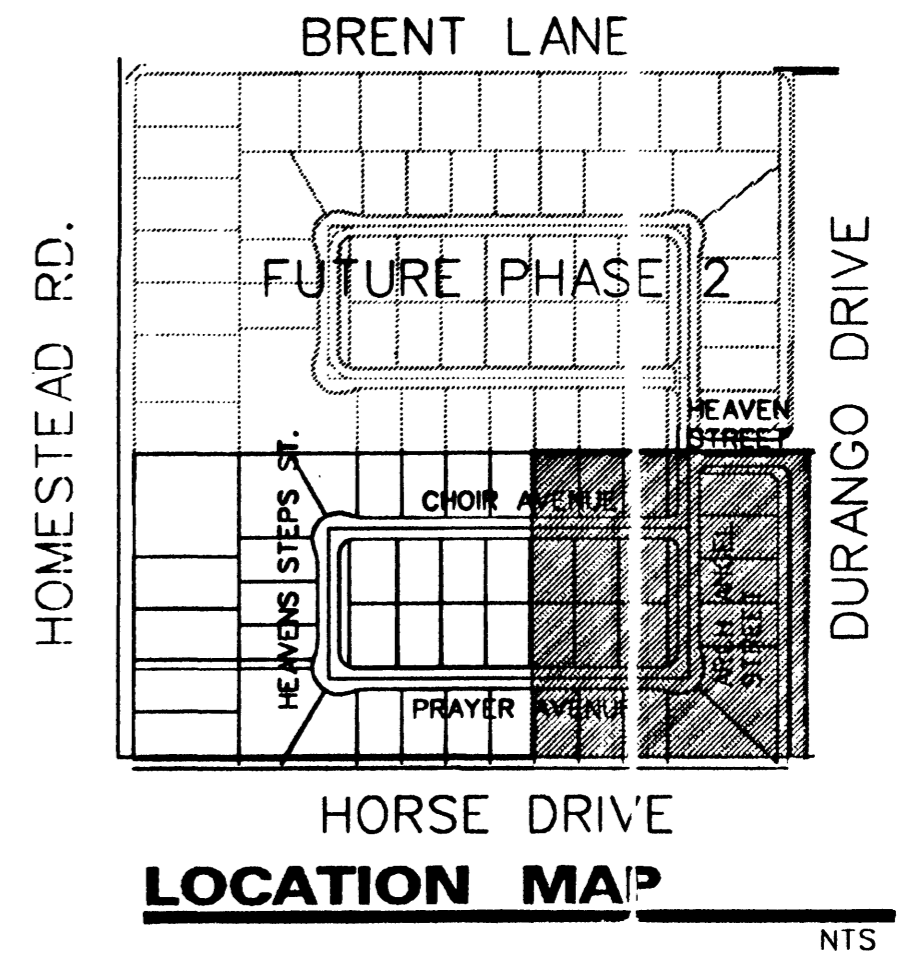
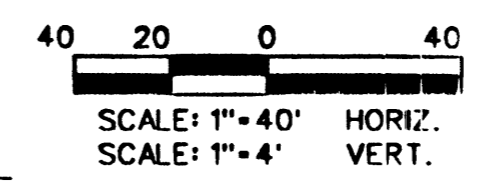
cutting underground utility lines. It's costly.
 Call before you Overhead
 1-800-2593-6111

REDUCED PRESSURE PRINCIPLE ASSEMBLY 1" - 3/4"

APPROVED REDUCED PRESSURE PRINCIPLE ASSEMBLY(S) SHALL BE INSTALLED PER THE UDACS PLATE NO. 11A. NO WATER SHALL BE TAKEN FROM A SERVICE FEEDING BACKFLOW PREVENTION UNTIL THE REDUCED PRESSURE PRINCIPLE ASSEMBLY HAS BEEN SUCCESSFULLY TESTED BY THE LVVWD. ANY BLOCK WALL OR OTHER FENCE MATERIAL SHALL BE DESIGNED AND CONSTRUCTED AROUND THE OUTSIDE OF THE EASEMENT(S) TO ALLOW THE DISTRICT DIRECT ACCESS FROM THE ADJACENT RIGHT-OF-WAY.

NOTES:
 ALL DIMENSIONS TO UTILITIES ARE TO CENTERLINE OF PIPE UNLESS INDICATED OTHERWISE
 CONTRACTOR SHALL VERIFY HORIZONTAL AND VERTICAL ALIGNMENT OF EXISTING UTILITIES AND TO NOTIFY THE DESIGN ENGINEER IMMEDIATELY ON ANY DISCREPANCIES PRIOR TO CONSTRUCTION
 SEE SHEET C4 FOR LVVWD STANDARD NOTES
 PRIVATE DRIVE, P.U.E., C.L.V. SEWER EASEMENT AND PUBLIC DRAINAGE EASEMENT (TO BE PRIVATELY MAINTAINED)

CONSTRUCTION NOTE
 ALL EXISTING UTILITY STRUCTURES WITHIN CONSTRUCTION AREA SHALL BE ADJUSTED TO MATCH FINISH GRADE (I.E. W.V. BOX, W.M., ANNODE BOX, F.H. TEL. BOX, ETC.)



SEWER CONSTRUCTION NOTES

- 1 INSTALL 8" P.C. PUBLIC SANITARY SEWER LINE
- 2 INSTALL 48" SANITARY SEWER MANHOLE PER (CSWC DWG. SD-1)
- 3 REMOVE EXISTING CAP AND CONNECT PROPOSED SEWERLINE TO EXISTING SEWERLINE
- 4 4" WYE
- 5 4" SEWER LATERAL
- 6 INSTALL 8" CAP FOR FUTURE USE
- 7 INSTALL 18" CAP FOR FUTURE USE
- 8 INSTALL 18" PVC PUBLIC SANITARY SEWER
- 9 INSTALL 60" SANITARY SEWER MANHOLE PER (CSWC DWG. SD-1)
- BWV INSTALL SEWER BACKWATER VALVE PER (CSWC DWG. SD-29) (SEE DETAIL ON SHEET C4)

WATER CONST. NOTES / QUANTITIES

- 1 INSTALL 8" PVC WATER LINE 2,951 LF
- 2 INSTALL 90° - 45° BEND 2 EA
- 3 INSTALL 8" - TEE 4 EA
- 4 INSTALL 90° - 90° BEND 2 EA
- 5 INSTALL FIRE HYDRANT ASSEMBLY (PER UDACS PL. NO. 7) (INCLUDE: TEE, 6" PIPE, GATE VALVE & RISER) 7 EA
- 6 INSTALL 8" GATE VALVE. (VALVES SHALL NOT BE LOCATED IN STREET VALLEY GUTTERS) 10 EA
- 7 INSTALL 8" CAP & 2" BLOWOFF ASSEMBLY 2 EA
- 8 REMOVE EXISTING CAP AND CONNECT PROPOSED WATERLINE TO EXISTING WATER LINE 2 EA
- 9 INSTALL 3/4" WATER METER WITH 3/4" RPPA (UDACS PL. 1D) 3 EA
- 10 INSTALL 1" WATER METER WITH 1" RPPA (UDACS PL. 1D) 1 EA
- 11 INSTALL 2" - 4" IRRIGATION SLEEVES 176 LF
- 12 INSTALL 3/4" WATER METER (UDACS PLATE 1B) 46 EA
- 13 INSTALL 12" PVC WATER LINE 643 LF
- 14 INSTALL 12" CAP & 2" BLOWOFF ASSEMBLY 1 EA
- 15 INSTALL 12" X 8" TEE 1 EA
- 16 INSTALL 12" GATE VALVE 1 EA
- 17 INSTALL 10" X 8" REDUCER 1 EA
- 18 INSTALL 8" DUCTILE IRON PIPE 382 LF
- 19 INSTALL WOODRUFF IRON CRASH GATE PER CLV STDS. 2 EA
- PRV INSTALL PRESSURE REDUCING VALVE 40 EA

SEWER CONTRIBUTION

AVERAGE FLOW - .0115 MGD
 PEAK FLOW - .0390 MGD

LAS VEGAS FIRE DEPARTMENT

THE FIRE FLOW REQUIREMENT IS 1500 GALLONS PER MINUTE AT 20 PSI RESIDUAL PRESSURE.

BASED ON:
 SQUARE FOOTAGE: 3,800 S.F. (MAX)
 BUILDING HEIGHT: 24 FEET
 NUMBER OF STORIES: 2 FLOORS
 TYPE OF CONSTRUCTION: V-M
 OCCUPANCY: RESIDENTIAL
 FULL AUTOMATIC FIRE SPRINKLER SYSTEM: NO

REVIEWED BY: *[Signature]* 3/23/99 DATE
APPROVALS
[Signature] 4/22/99 DATE
 LVVWD. AS-BUILT

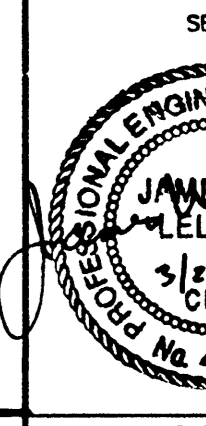
RICHMOND AMERICAN HOMES OF NEVADA INC.
 6280 S. Valley View Blvd.
 Suite 200
 Las Vegas, NV 89118
 Tel: (702) 368-3008
 Fax: (702) 368-0047

MASTER UTILITY PLAN (EAST HALF)
 MYSTIC VALLEY PHASE I

SHEET 11/4/98

DESIGNED BY: G. HOWELL, W. KIM 11/4/98
 CHECKED BY: M. SEEBECK 11/4/98

PROJECT NO: 38-3031-03
 SCALE: 1"=40' HORIZ.



SHEET C5
 5 OF 18 SHEETS
 DRAWING NO. 307Y-4599-1