

QUANTITY ESTIMATE

ONSITE:

4' DIAMETER MANHOLE 13 EA

8" SEWER MAIN (C.L.V.) 4,594 LF

4" SEWER LATERALS 1,924 LF

OFFSITE:

6" SEWER LATERAL 35 LF

4' DIAMETER MANHOLE 14 FA

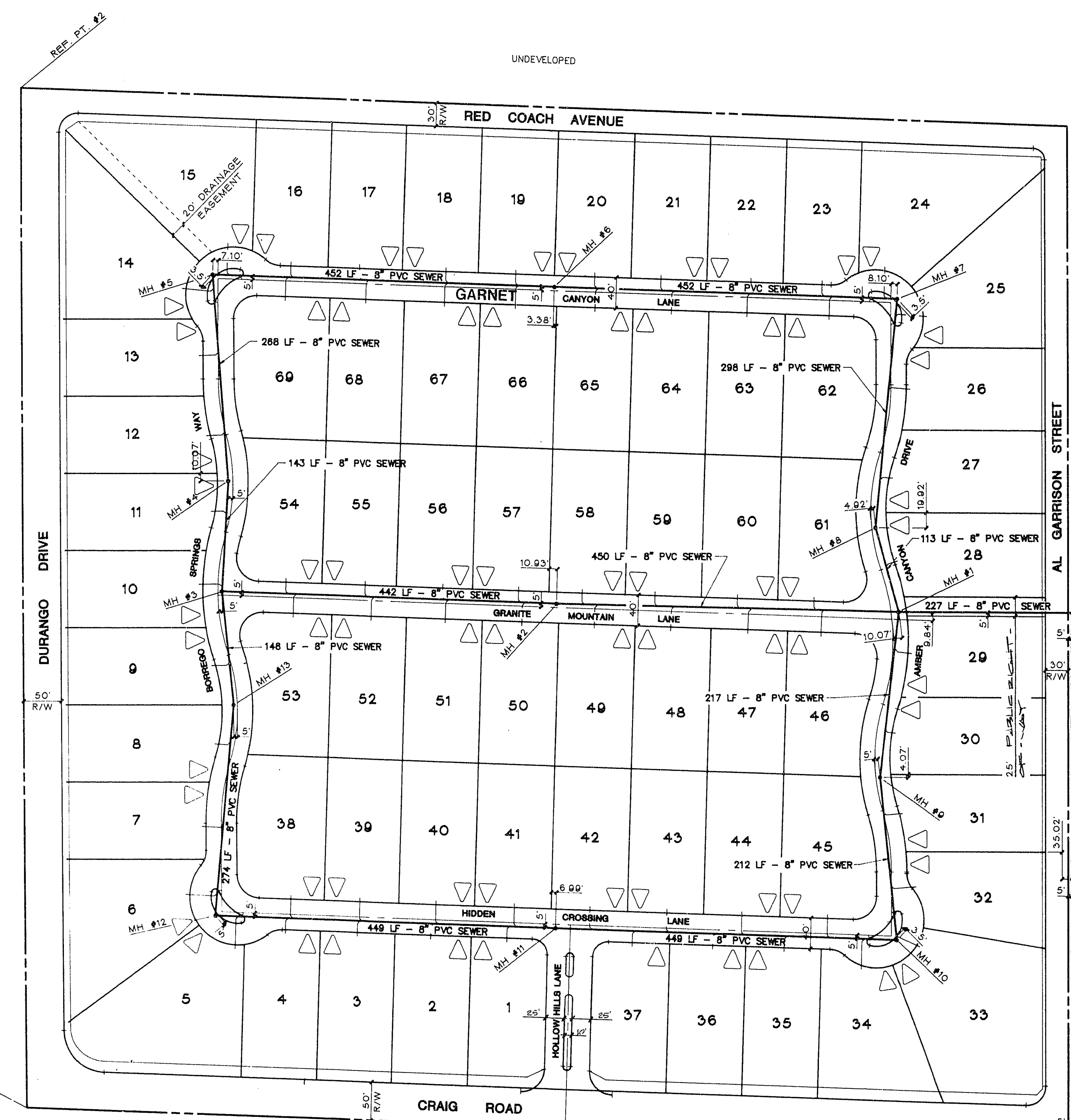
12" SEWER MAIN (C.L.V.) (OVERSIZED FROM 8" PER C.L.V.) 4,002 LF

8" SEWER MAIN (C.L.V.) 695 LF

NOTE: THESE QUANTITIES ARE ONLY ESTIMATES, CONTRACTOR TO VERIFY.

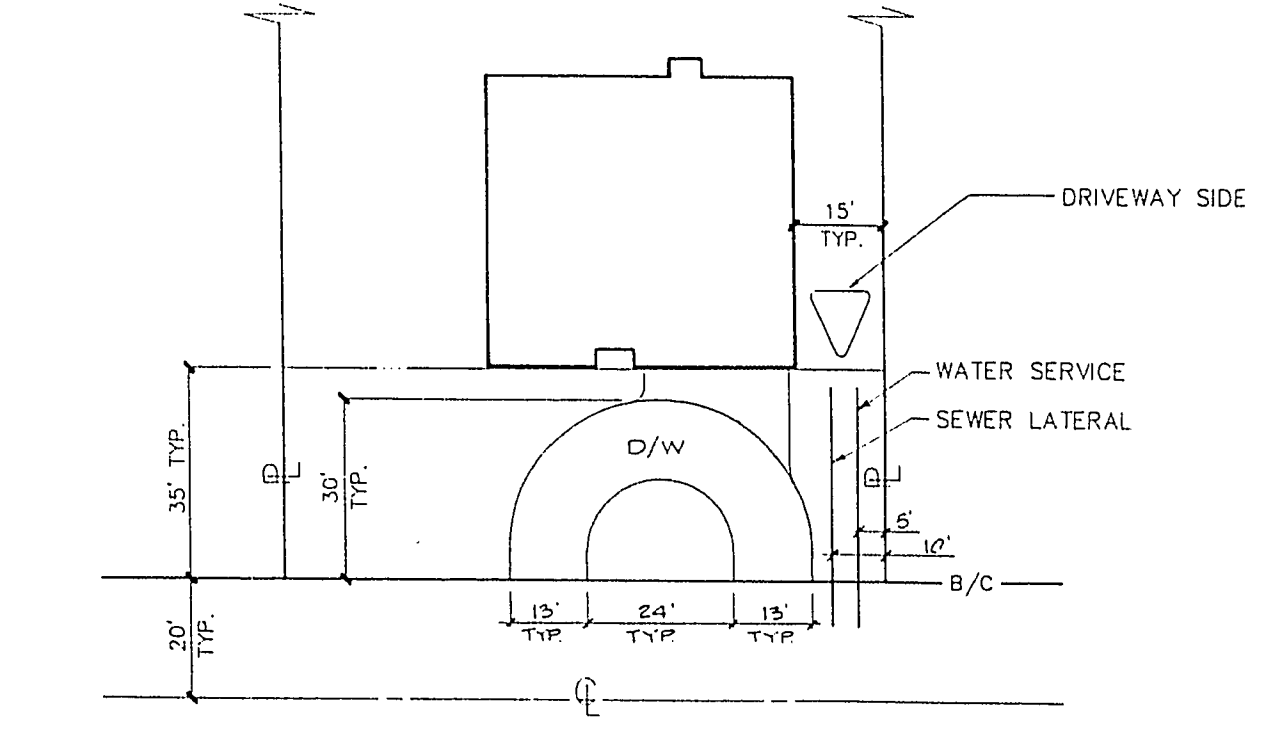
CITY OF LAS VEGAS SEWER NOTES

- ALL CONSTRUCTION AND MATERIALS SHALL BE IN ACCORDANCE WITH THE LATEST EDITION OF THE DESIGN & CONSTRUCTION STANDARDS FOR WASTEWATER COLLECTION SYSTEMS AND THE UNIFORM STANDARD SPECIFICATIONS FOR PUBLIC WORKS' CONSTRUCTION OFF-SITE IMPROVEMENTS, CLARK COUNTY AREA, NEVADA, AS AMENDED. IN ALL CASES, THESE STANDARDS SHALL SUPERCEDE THE UNIFORM STANDARD SPECIFICATIONS. IT WILL BE THE RESPONSIBILITY OF THE CONTRACTOR TO BE AWARE OF THE CONTENTS OF THE ABOVE SPECIFICATION BOOKS.
- IT SHALL BE THE CONTRACTOR'S RESPONSIBILITY TO PERFORM CONSTRUCTION AS PER PLANS. ANY ADDITIONS, DELETIONS, OR CHANGES SHALL FIRST MEET WITH THE APPROVAL OF THE CONTROLLING AGENCY.
- CHISEL "S" OR "G" IN CURBS WHERE SEWER OR GAS LATERALS PASS UNDER THE CURB.
- POLYVINYL (PVC) SEWER PIPE SHALL MEET ASTM D-3034 SDR 35 SPECIFICATIONS, INSTALLED WITH SAND BEDDING AND BACKFILL OF TYPE II GRAVEL.
- ALL MANHOLES IN PAVED STREETS 80' R/W AND LARGER, SHALL HAVE CONCRETE COLLARS.
- TEE SADDLES SHALL BE USED TO CONNECT SEWER LATERALS TO EXISTING MAIN LINES UP TO 12" DIA. SIZE. CONNECTIONS TO 15" OR LARGER MAINS SHALL REQUIRE SPECIAL PROCEDURES.
- A SEWER MAIN CROSSING OVER A WATER MAIN OR LESS THAN 18" UNDER A WATER MAIN, MUST BE REINFORCED CONCRETE ENCASED FOR A DISTANCE OF NOT LESS THAN TEN FEET (10') TO EACH SIDE OF THE CENTERLINE OF THE WATER MAIN.
- ALL CONTRACTORS INSTALLING SEWER MAINS THAT WILL BE UNDER THE JURISDICTION OF THE CONTROLLING AGENCY MUST BE CLASS "A" CONTRACTORS.



MANHOLE CONTROL TABLE

MH #	NORTHING	EASTING
1	5646.40	6152.51
2	5656.01	5708.36
3	5670.41	5284.13
4	5820.74	5281.86
5	6081.05	5250.80
6	6066.53	5698.66
7	6051.95	6148.45
8	5737.00	6123.73
9	5431.37	6126.93
10	5221.63	6144.88
11	5236.19	5695.90
12	5250.56	5252.49
13	5505.09	5266.63
OFFSITE MANHOLES		
12	4950.63	6375.73
13	5300.42	6377.22
14	5645.43	6378.70
REFERENCE POINTS		
1	5000.00	5000.00
2	6323.39	4997.31



TYPICAL DRIVEWAY & SERVICE LOCATION DETAIL
(NOT TO SCALE)

BENCHMARK

B.M. = C.L.V. # 1LV004SES
FOUND NAIL IN TAG IN TOP OF CURB AT THE NW QUADRANT OF BUFFALO DR. & ALEXANDER RD.
ELEVATION = 2339.57'

Call before you Dig.
1-800-227-2600
UNDERGROUND SERVICE (USA)

NOTE:

EXISTING UTILITY LOCATIONS SHOWN HEREIN ARE APPROXIMATE ONLY. IT SHALL BE THE CONTRACTOR'S RESPONSIBILITY TO DETERMINE THE EXACT VERTICAL AND HORIZONTAL LOCATION OF ALL EXISTING UNDERGROUND UTILITIES PRIOR TO COMMENCING CONSTRUCTION. NO REPRESENTATION IS MADE THAT ALL EXISTING UTILITIES ARE SHOWN HEREON. THE ENGINEER ASSUMES NO RESPONSIBILITY FOR UTILITIES NOT SHOWN OR UTILITIES NOT SHOWN IN THEIR PROPER LOCATION.

APPROV. REV.	DATE	BY	REVISION
1	9-24-92	PC	ISSUED D/W SERVICE DETAIL, ADDED TURN D/W SEE SYMBOL PER T.A.W. MEETING 11-22-92
2	9-24-92	PC	REV'D DRAINAGE EASEMENT & SEWER PER HYDROLOGY.
3	11-23-92	BLC	REV'D OFFSITE MH #12 LOCATION, ADDED STUB & OVERSIZED TO 12" & 12" PER T.A.W. MEETING 11-23-92. SEE SYMBOL PER T.A.W.
4	11-30-92	BLC	REV'D KNUCKLES PER CLARK COUNTY.
5	12-11-92	PC	REV'D TURN D/W SEE SYMBOL PER T.A.W.
6	12-17-92	PC	REV'D TURN D/W SEE SYMBOL PER T.A.W.
7	1-13-93	CFA	CHANGE STREET NAME GARNET CANYON LANE

ESI ENGINEERS AND SURVEYORS INC.
PLANNING ENGINEERS, ARCHITECTS, SURVEYORS
708 W. CHARLESTON BLVD., SUITE 100, LAS VEGAS, NV 89102
PHONE: (702) 363-6415
FAX: (702) 363-6415

DATE OF PLAN: 10-21-92
SUBMITTED BY: DANIEL L. HARRIS
DANIEL L. HARRIS
REGISTERED PROFESSIONAL SURVEYOR
NO. 16,880

MASTER SEWER PLAN

MONTEREY ESTATES
AP# 460-00-012

TITLE

PROJECT

W.O. #: 010 - A585

BY: DTB

DATE: SEPT. 1992

SCALE: 1" = 100'

SHEET

25

OF 26 SHEETS

10-26-60 3074-4243