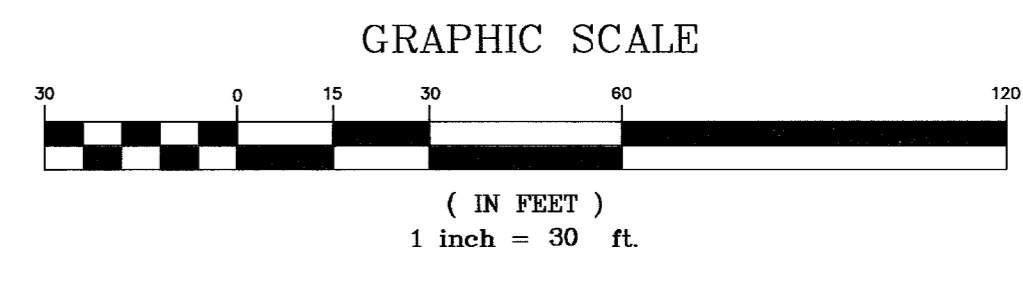
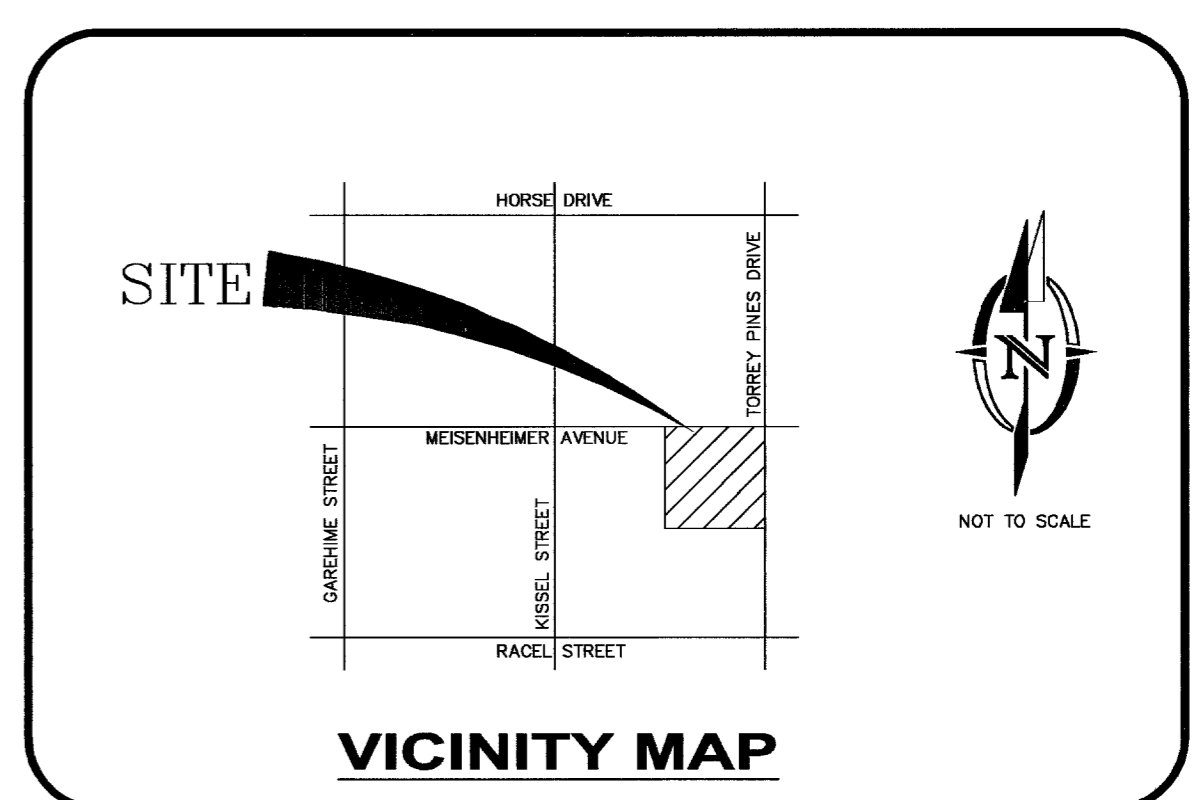
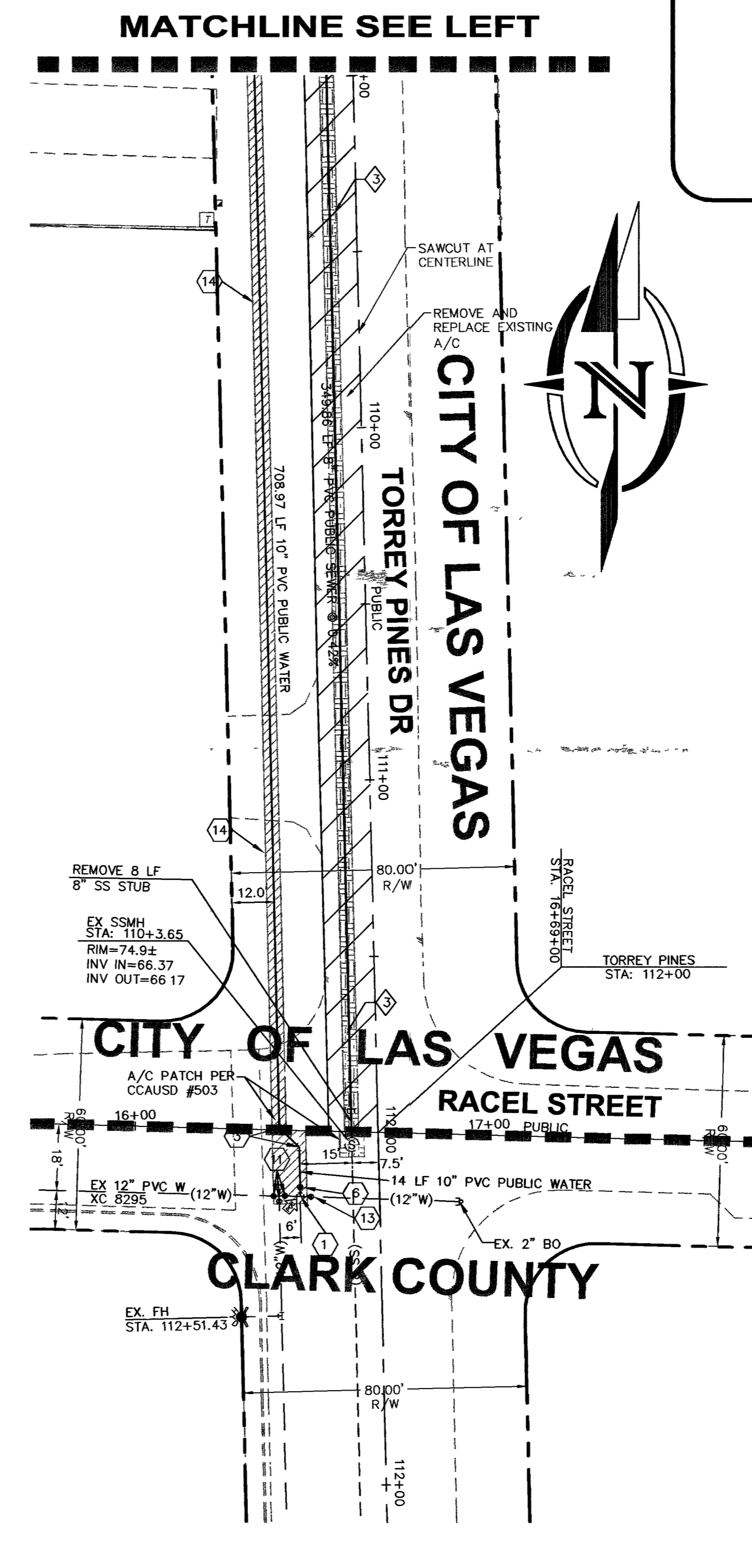
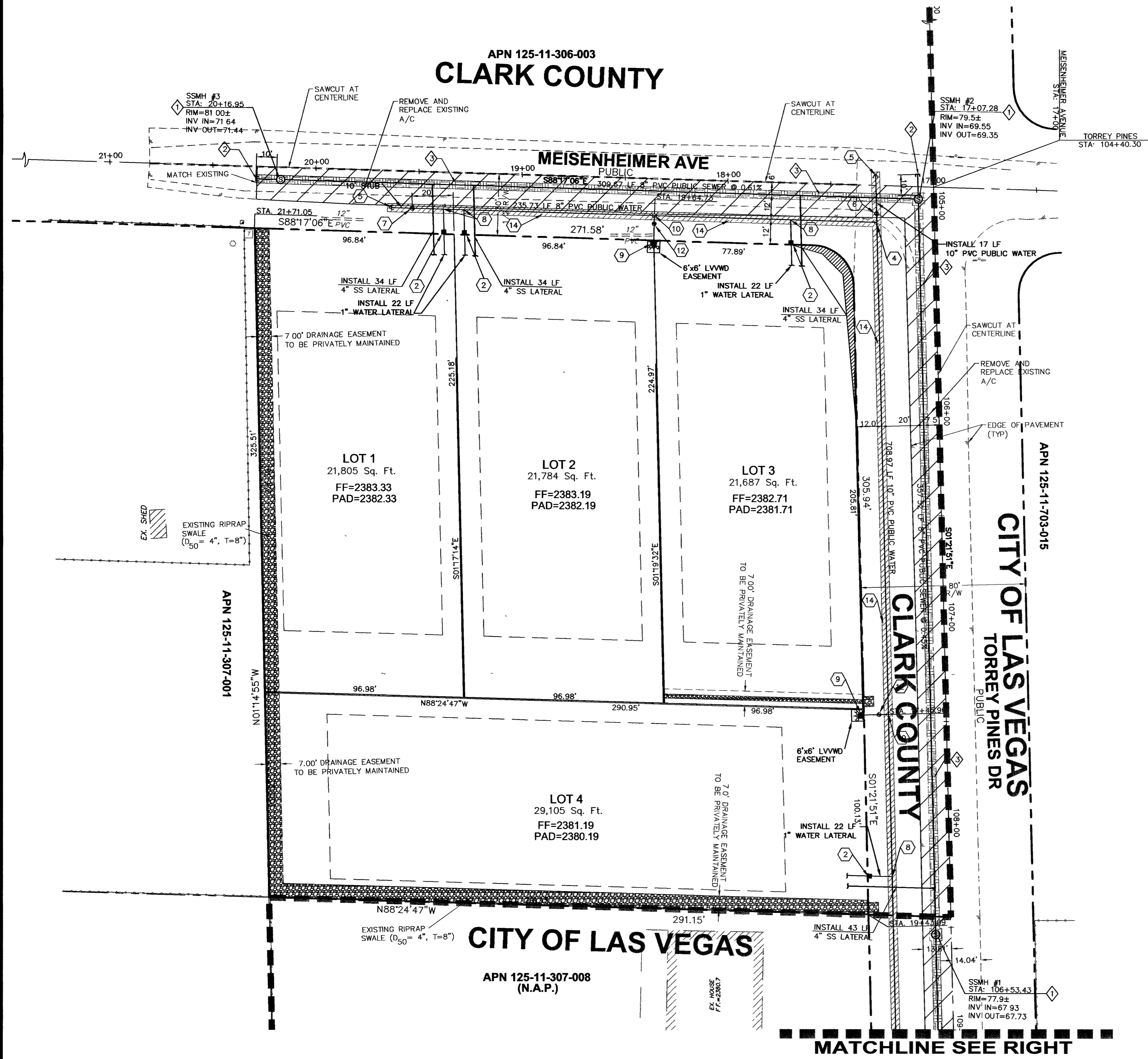


APN 125-11-306-003
CLARK COUNTY



SEWER CONSTRUCTION NOTES:

- 1. CONSTRUCT 48" MANHOLE PER CCWRD STD DWG SD-1.
 - 2. INSTALL 8" PVC STUB.
 - 3. TRENCH & BACKFILL PER APPLICABLE CCAUSD #503 AND #504.
- THE CONTRACTOR IS REQUIRED TO PULL PERMIT FROM LAND DEVELOPMENT, CITY OF LAS VEGAS FOR INSTALLATION OF SEWER SYSTEM.

WATER CONSTRUCTION NOTES:

- 1. P.O.C. - CONNECT TO EXISTING 12" WATER LINE WITH 12" x 10" TEE AND 10" GATE VALVE PER UDACS PLATE #3 & #5.
- 2. INSTALL 3/4" WATER METER PER UDACS PLATE #3 & #5.
- 3. INSTALL 10" 45 DEGREE ELBOW PER UDACS PLATE #5.
- 4. INSTALL 10" x 8" TEE WITH THRUST BLOCKS PER UDACS PLATE #5.
- 5. INSTALL 2" BLOW OFF PER UDACS PLATE #4A.
- 6. INSTALL 10" GATE VALVE PER UDACS PLATE #3.
- 7. INSTALL 8" GATE VALVE PER UDACS PLATE #3.
- 8. P.O.C. - CONNECT TO MAIN WITH 1" SERVICE SADDLE AND CORP STOP PER UDACS PLATE #10.
- 9. INSTALL FIRE HYDRANT ASSEMBLY PER UDACS PLATE #7.
- 10. INSTALL 8"x6" TEE WITH THRUST BLOCKS PER UDACS PLATE #5.
- 11. ADJUST WATER VALVE BOX TO FINISHED GRADE PER UDACS PLATE #5.
- 12. INSTALL 6" GATE VALVE PER UDACS PLATE #3.
- 13. INSTALL 12" GATE VALVE PER UDACS PLATE #3.
- 14. TRENCH & BACKFILL PER APPLICABLE UDACS PLATE #6B AND #6C.

SEWER QUANTITIES

ITEM	PUBLIC	PRIVATE
8" PVC PIPE	1027 LF	0 LF
48" MANHOLE	3 E.A.	0 E.A.
4" PVC LATERAL	145 LF	0 LF

NOTE

EXISTING LOCATIONS OF ALL UTILITIES SHOWN ON THE DRAWINGS WERE OBTAINED FROM A SEARCH OF AVAILABLE RECORDS, TOPOGRAPHIC SURVEY, AND FIELD SURVEY. THE ENGINEER ASSUMES NO RESPONSIBILITY FOR UTILITIES OR STRUCTURES NOT SHOWN OR NOT IN LOCATION SHOWN ON DRAWINGS. CONTRACTOR TO VERIFY LOCATIONS AND COORDINATE WITH LAS VEGAS VALLEY WATER DISTRICT, CLARK COUNTY WATER RECLAMATION DISTRICT, SPRINT, NEVADA POWER, SOUTHWEST GAS, KINDER MORGAN AND ANY OTHER AFFECTED UTILITY COMPANY FOR REMOVAL OR RELOCATION CRITERIA PRIOR TO REMOVAL OR RELOCATION OF ANY UTILITIES.

INSTALL PIPELINE MARKER BALLS IN TRENCH ABOVE EACH HORIZONTAL ELBOW FITTING, PER UDACS PLATE NO. 27.

PIPE MATERIAL CONSTRUCTION LIST

UNLESS OTHERWISE NOTED ON THE PLANS, ALL PIPE MATERIALS USED SHALL BE AS FOLLOWS

WATER SYSTEM
ALL PIPES GREATER THAN OR EQUAL TO 4" IN DIAMETER SHALL BE CONSTRUCTED USING PVC C-900
ALL PIPES LESS THAN 4" IN DIAMETER SHALL BE CONSTRUCTED USING PVC SCH 40 (PRIVATE)

SEWER SYSTEM
ALL PIPES SHALL BE CONSTRUCTED USING SDR-35
STORM DRAIN SYSTEM
ALL PIPES SHALL BE CONSTRUCTED USING MATERIALS AS NOTED ON PLANS

PRIVATE PRV NOTE:

THIS PROPERTY MAY HAVE STATIC WATER PRESSURE IN EXCESS OF 80 PSI. THE UNIFORM PLUMBING CODE REQUIRES THAT INDIVIDUAL, ON-SITE (PRIVATE), PRESSURE REDUCING VALVES BE INSTALLED WHENEVER THE PRESSURE EXCEEDS 80 PSI. PRV'S ARE THE DEVELOPER'S RESPONSIBILITY AND WILL NOT BE INSPECTED OR INCLUDED IN THE ACCEPTANCE OF LVWD FACILITIES.

SVZ NOTE:

NOTHING OVER 24" IN HEIGHT ALLOWED IN SIGHT VISIBILITY ZONE EXCEPT TRAFFIC CONTROL DEVICES.

BUILDING SIZE NOTE:

MAXIMUM SIZE OF THE BUILDING ON ANY LOT IS 5,000 SQ. FT. (TYPE V-N)

LAS VEGAS VALLEY WATER DISTRICT

LVWWD PROJ H554.38 DATE

**COUNTY OF CLARK
FIRE DEPARTMENT
APPROVED**

BY *Benny Chapman* 4/1/05

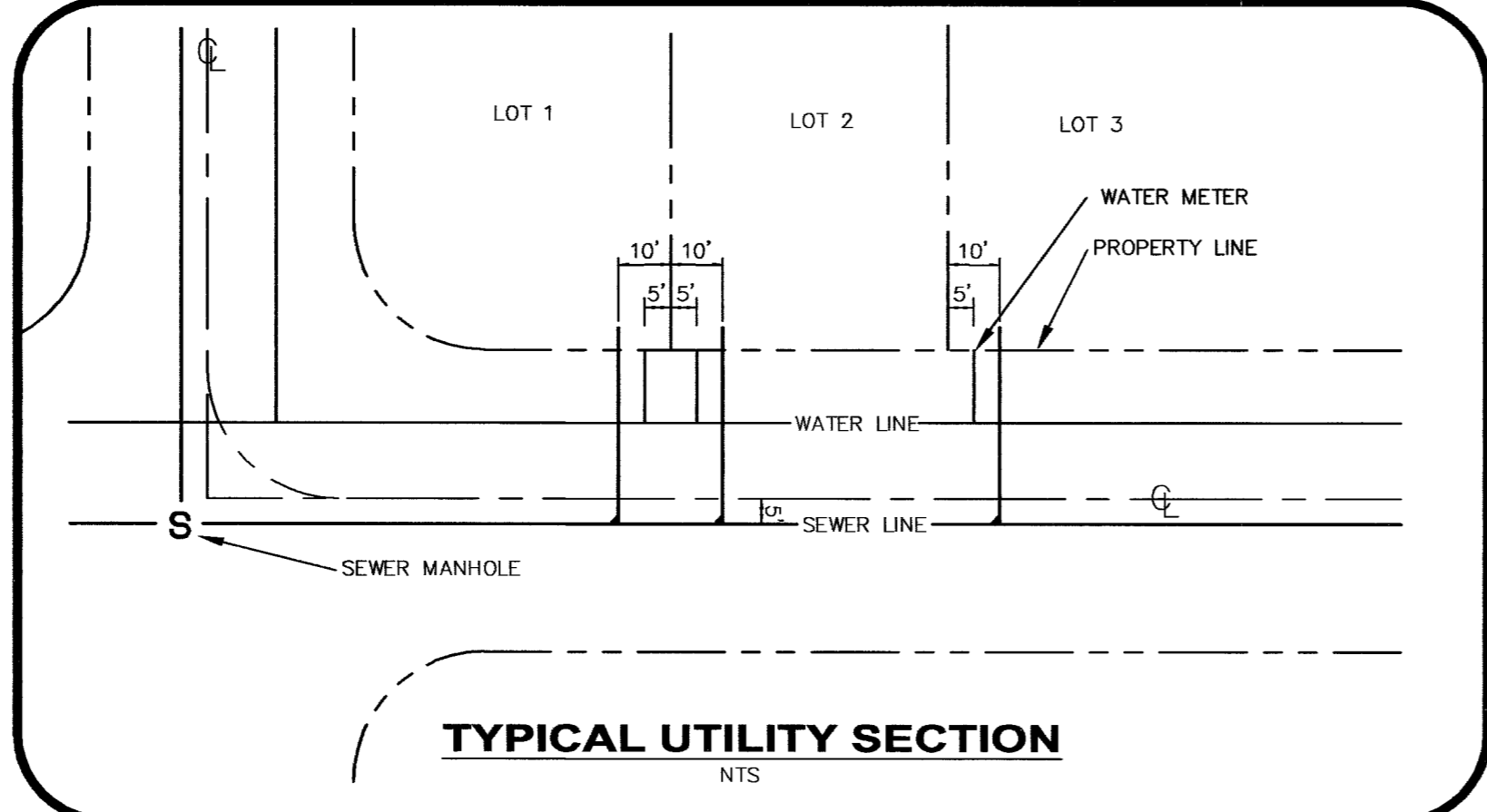
APPROVAL OF THESE PLANS SHALL NOT BE CONSTRUED TO BE A PERMIT FOR, OR AN APPROVAL OF, ANY VIOLATION OF ANY OF THE PROVISIONS OF THE STATE OR COUNTY LAWS.
FIRE FLOW = 2,000 GPM AT 20 PSI RESIDUAL.

SEWER CONTRIBUTION

4 LOTS

AVE. DAILY FLOW = $\text{SERUS} \cdot \text{ERU FACTOR}$
 $= 4 \cdot 250 \text{ GPD} = 1,000 \text{ GPD}$
 $= 0.69 \text{ GPM} = 0.001000 \text{ MGD}$

PEAK DAILY FLOW = $\text{PEAK FACTOR} \cdot \text{AVE DAILY FLOW}$
 $= 3.4 \cdot 1,000 \text{ GPD} = 3,400 \text{ GPD}$
 $= 2.36 \text{ GPM} = 0.003400 \text{ MGD}$



BENCHMARK

CITY OF LAS VEGAS BENCHMARK 6LV90 1156, BEING A RIVET AND PLATE IN A CONCRETE TRANSFORMER PAD, LOCATED ON RACEL STREET, 200 FEET EAST OF TORREY PINES (##HH 04197) ELEVATION = 2374.96 FEET (723.889 METERS) N A V D 1988

BASIS OF BEARING

THE BASIS OF BEARINGS FOR THIS SURVEY IS THE CENTER LINE OF TORREY PINES DR. BEING THE EAST LINE OF THE NORTH EAST QUARTER (NE 1/4) OF THE SOUTH WEST QUARTER (SW 1/4) OF SECTION 11, TOWNSHIP 19 SOUTH, RANGE 60 EAST, M.D.M., AS SHOWN IN FILE 86, PAGE 30 OF PARCEL MAPS, OFFICIAL RECORDS, CLARK COUNTY, NEVADA SAID LINE BEARS NORTH 01°21'51" WEST.

AVOID CUTTING UNDERGROUND UTILITY LINES. IT'S COSTLY!

Call before you Dig.
1-800-227-2600
UNDERGROUND SERVICE (USA)
79458

AVOID HITTING OVERHEAD POWER LINES. IT'S COSTLY!

CALL BEFORE YOU CRANE

1-702-227-2929

Call before you UnderGround

1-702-455-7511
CLARK COUNTY BUREAU OF ENGINEERING
1-702-229-6611
FRESH AND ARTIFICIAL STORAGE OF TEMPERATURE

REVISION APPROVAL BLOCK

REV. #	BY	DATE	DESCRIPTION

SCALE: 1"=30'

DRAWN BY: CAG
DESIGNED BY: CAG
CHECKED BY: RJ
DATE:

JOB NO: 15-154

RICHARD J. AND THERESA M. YACH
7008 BUSH GARDEN AVENUE
LAS VEGAS, NV 89129
(702) 668-7478

2480 E. Tompkins Ave.
Suite # 232
Las Vegas, NV 89121
phone: 702.456.4664
fax: 702.456.4919

INTEGRITY ENGINEERING

**MEISENHEIMER & TORREY PINES (SW)
YACH PARCEL MAP - MSM-0007-04**

UTILITY PLAN

PROFESSIONAL ENGINEER STATE OF NEVADA
JAE M. YACH
Exp. 6-30-05
CIVIL
15927

2-10-05

SHEET C4.01
4 OF 7 SHEETS
DRAWING NO.
HTE # 04-46525

CLV DWG #307V920