

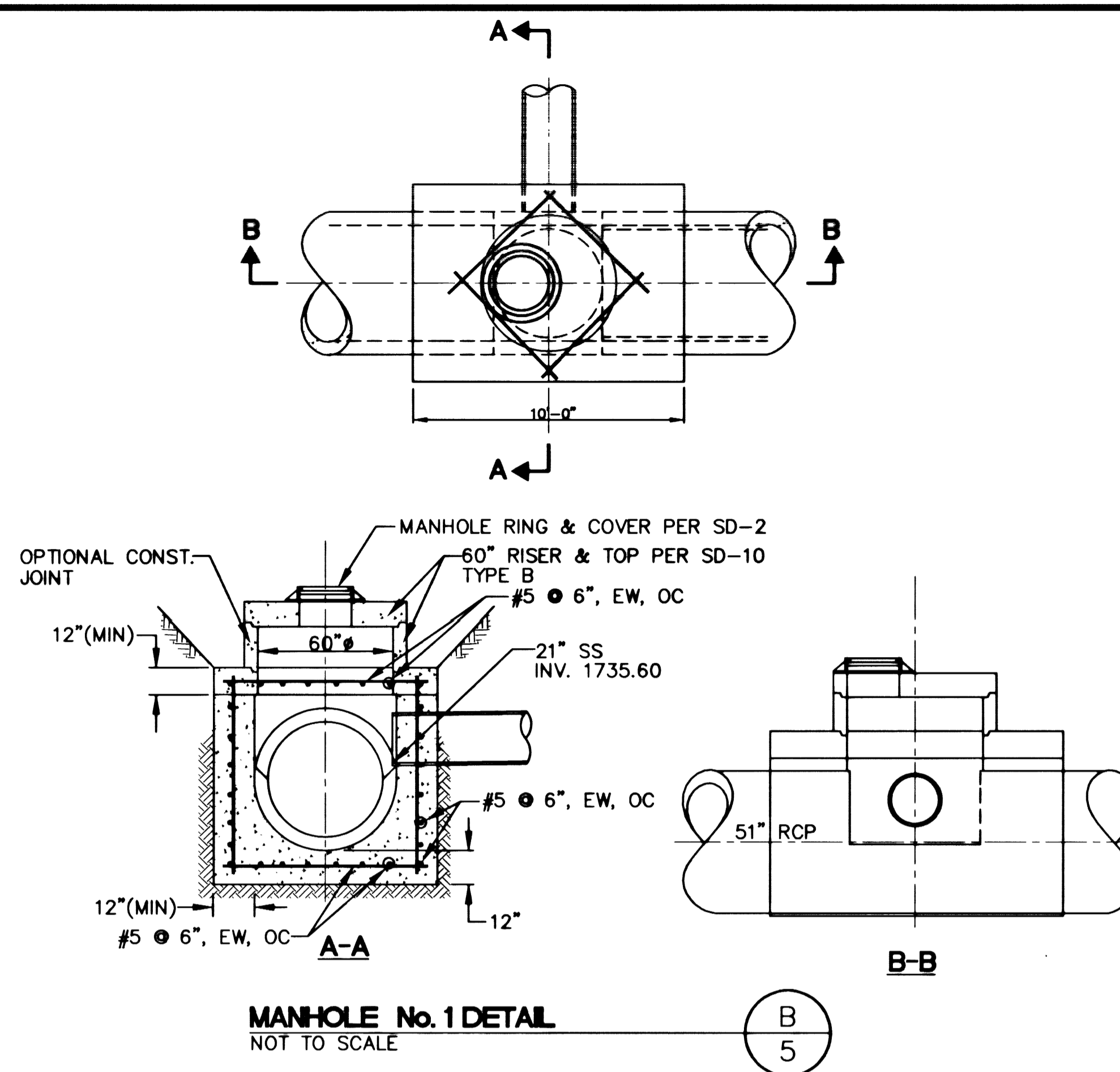
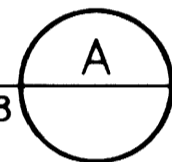
NOTES:

1. THE TOP 24" BELOW THE PAVEMENT SHALL BE TYPE II AGGREGATE BASE COMPACTED TO A MINIMUM OF 95% MAXIMUM DENSITY.
2. NO STONES OR LUMPS GREATER THAN 3" PERMITTED IN TRENCH BACKFILL.
3. MECHANICAL COMPACTION ONLY; NO JETTING OR FLOODING ALLOWED.
4. TRENCH EXCAVATION SHALL COMPLY WITH THE CURRENT REGULATIONS AS DETERMINED BY THE NEVADA OCCUPATIONAL SAFETY AND HEALTH ADMINISTRATION.
5. PCC PAVEMENT FROM STA. 10+00 TO 12+00, AC PAVEMENT FROM 12+00 TO 44+50
6. THE SAWCUT LINE SHALL MOVE TO NEAREST PANEL JOINT ON PCC PAVED AREA.
7. SEE USD STD DWG NO. 230 FOR PCC PAVEMENT CONCRETE THICKNESS SHALL BE 10" MINIMUM.

STANDARD TRENCH BACKFILL DETAIL

NOT TO SCALE

SHEETS 5,6,7,8



MANHOLE No. 1 DETAIL

NOT TO SCALE

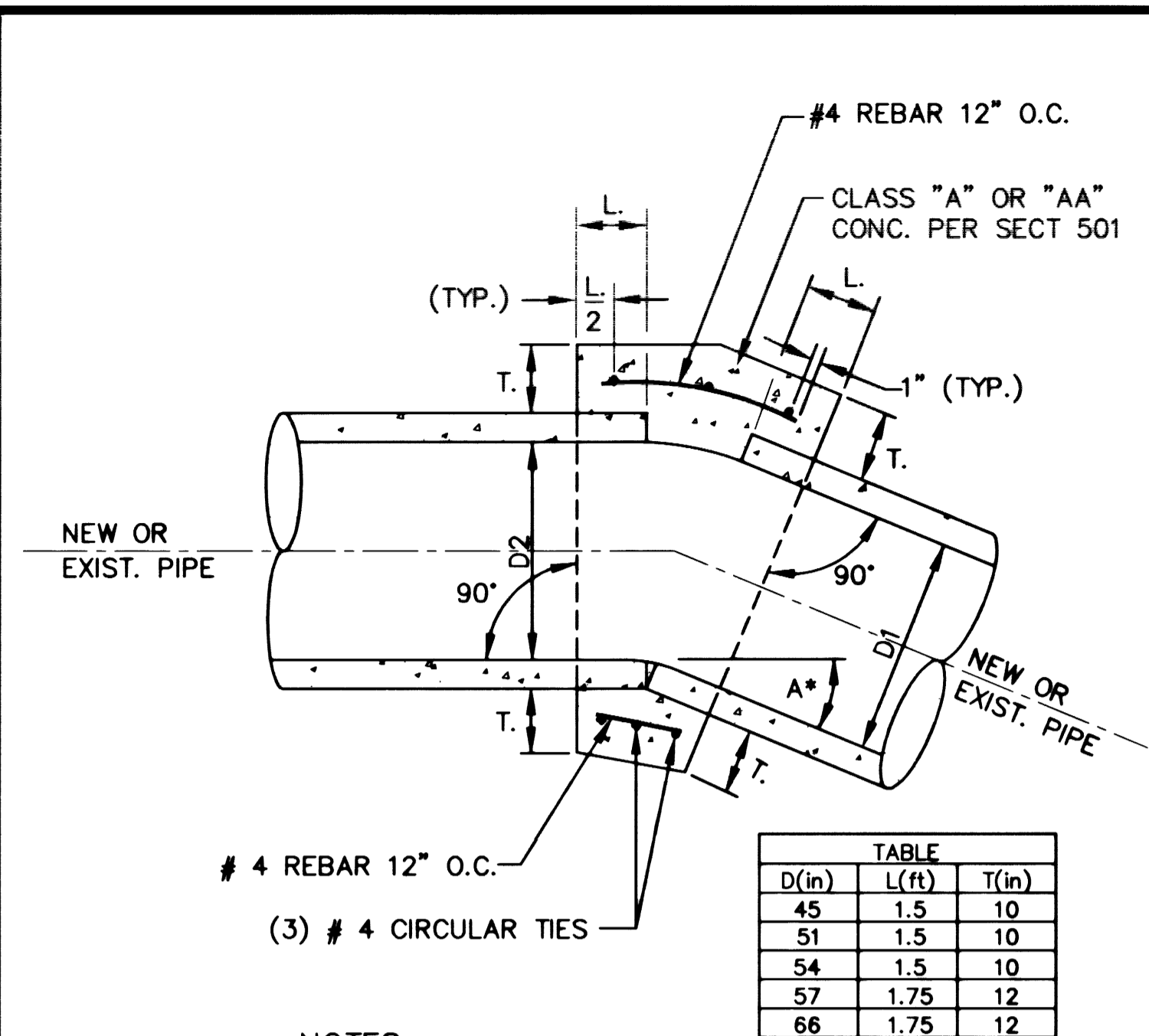
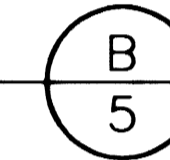


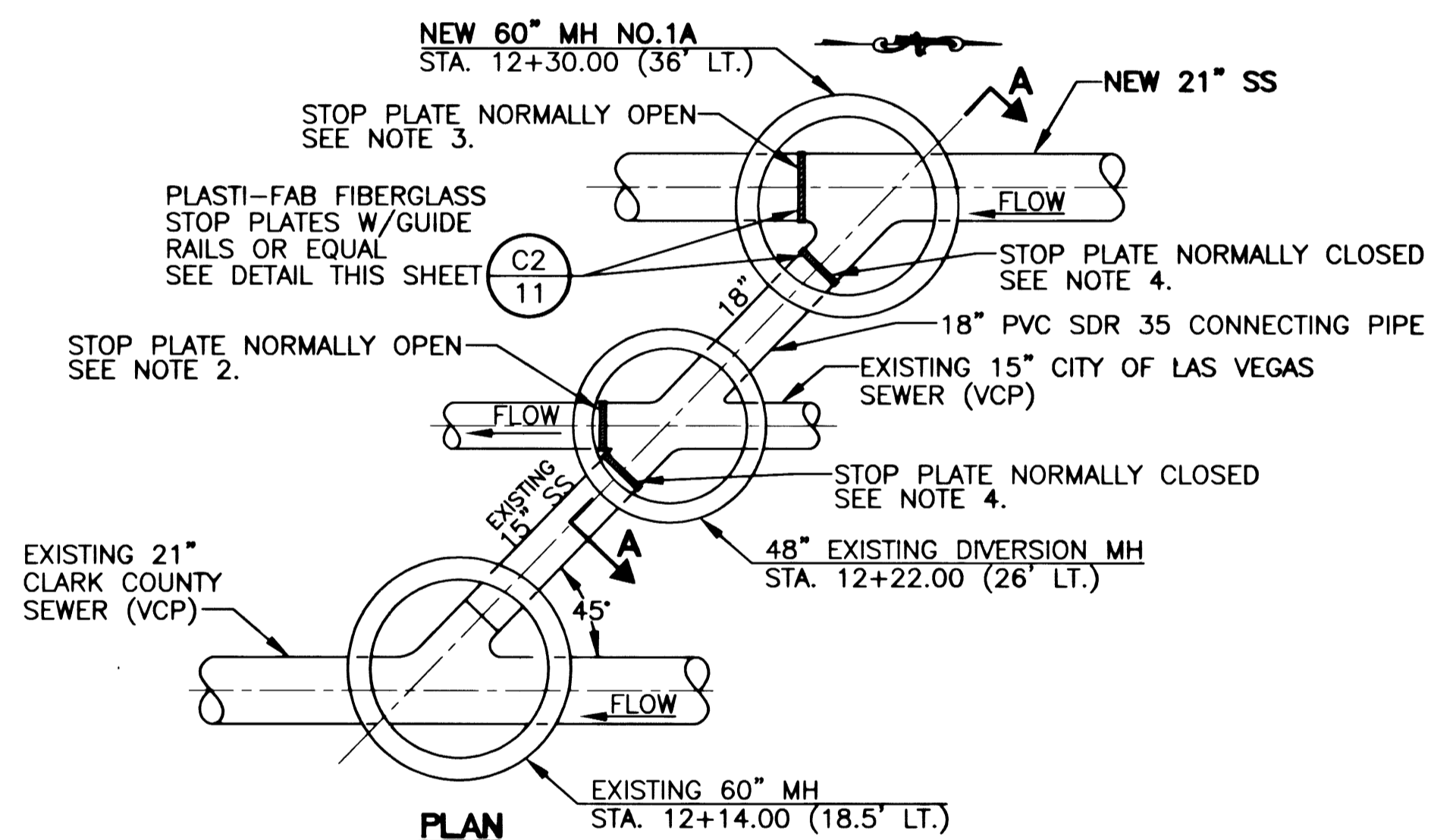
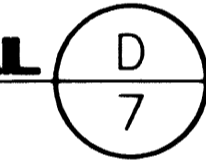
TABLE		
D(in)	L(ft)	T(in)
45	1.5	10
51	1.5	10
54	1.5	10
57	1.75	12
66	1.75	12

NOTES:

1. WHERE PIPES OF DIFFERENT DIAMETERS ARE JOINED WITH A CONCRETE COLLAR, L AND T SHOULD BE THOSE OF THE LARGER PIPE. D=D1 OR D2, WHICHEVER IS GREATER
2. FOR PIPE SIZES NOT LISTED USE NEXT SIZE LARGER.
3. WHERE REINFORCING IS REQUIRED, THE DIAMETER OF THE CIRCULAR TIES SHALL BE = (OUTSIDE DIAMETER OF PIPE + T.)
4. FIELD CLOSURES OF PIPE OF THE SAME DIAMETER AND WITHOUT CHANGE IN GRADE OR ALIGNMENT SHALL BE MADE WITH A CONCRETE COLLAR.
5. BACKFILL MATERIAL ALL AROUND COLLAR FOR A DISTANCE OF 12" MIN. TO 90% OF MAX. DRY DENSITY.
6. TROWEL INVERT TO A SMOOTH FINISH BETWEEN PIPES.
7. A = ANGLE OF DEFLECTION

CONCRETE COLLAR DETAIL

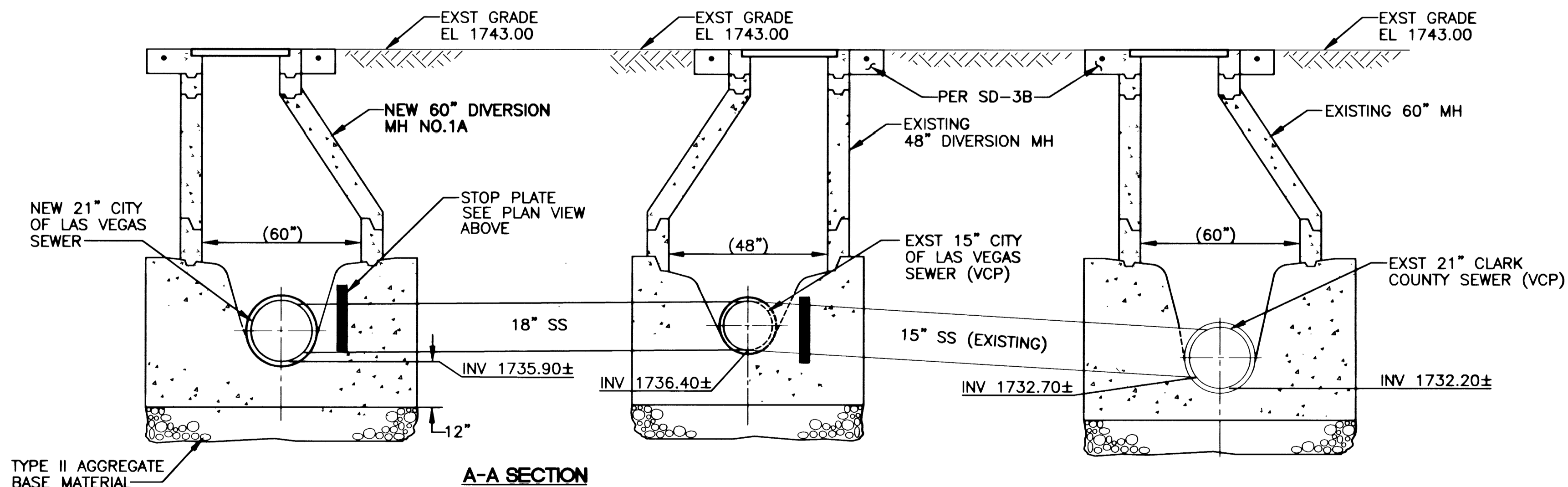
NOT TO SCALE



PLAN

NOTES:

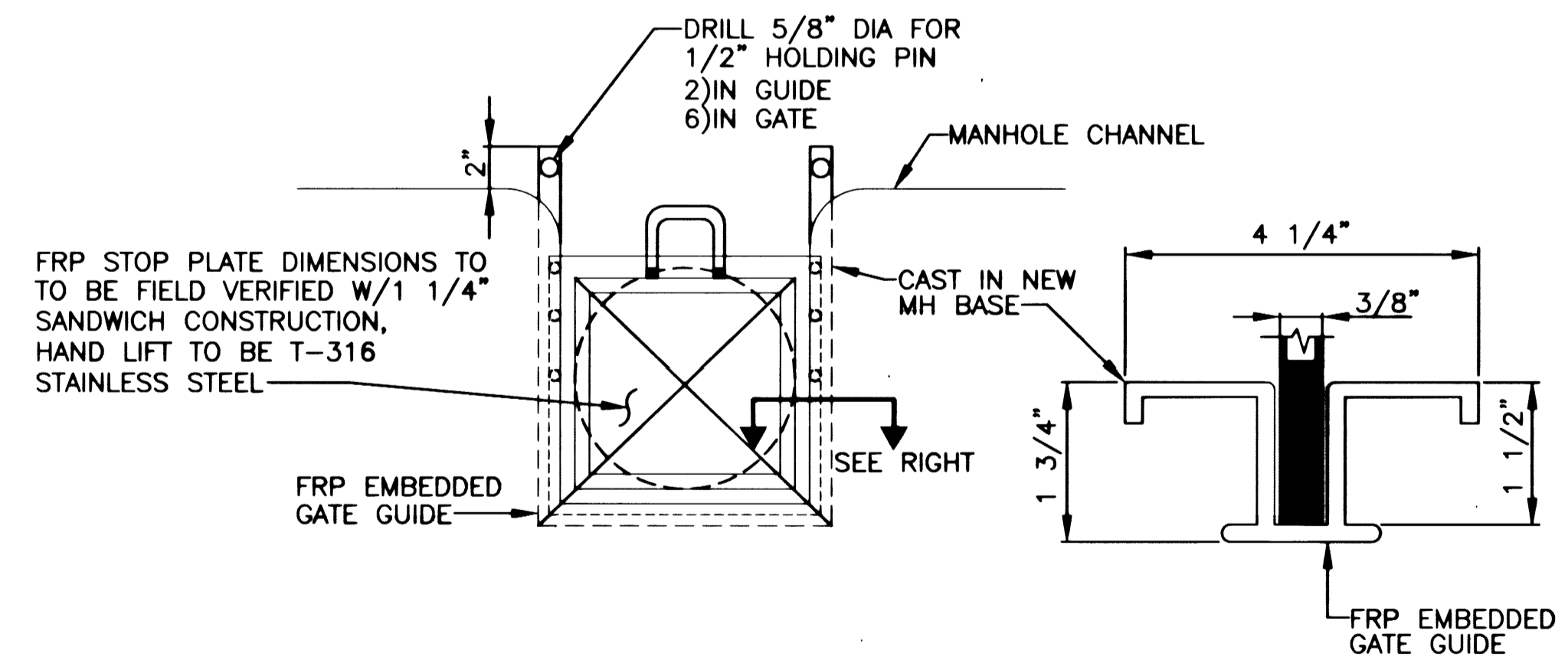
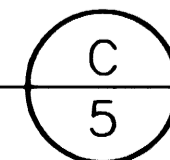
1. DIVERSION OF FLOW TO THE TEMPORARY CLARK COUNTY CONNECTION SHALL NOT START UNTILL THE INTERLOCAL AGREEMENT BETWEEN THE CITY OF LAS VEGAS AND THE CLARK COUNTY SANITATION DISTRICT HAS BEEN SIGNED.
2. TO BE CLOSED WHEN NEW 21" SS IS ACTIVATED.
3. TO BE CLOSED WHEN DIVERSION TO CC SEWER IS APPROVED.
4. TO BE OPENED WHEN DIVERSION TO CC SEWER IS APPROVED.
5. CONTRACTOR TO PROVIDE TEMPORARY PUMPING FACILITIES FOR THE REMAINING CONNECTION BETWEEN THE DIVERSION MANHOLE AND THE SLOAN LANE SEWER.



A-A SECTION

NEW 60' DIVERSION MANHOLE 1A

NOT TO SCALE



STOP PLATE AND GUIDE RAILS DETAIL

NOT TO SCALE



11

DATE: _____

REVISIONS: _____

DESIGN BY: S. L.

DRAFTED BY: GAA/RDB

SCALE (H) AS SHOWN: SCALE (V) N/A

DATE: 01/26/00

FILED: BK. # N/A

PROJECT: **DEPARTMENT OF PUBLIC WORKS**

NELLIS BLVD. SEWER

ACTING CITY ENGINEER: JERRY WALKER, P.E.

DESIGN ENGINEER: STANLEY CONSULTANTS, INC.

BD No. 00173027

ENGINEERING DESIGN DIVISION

STATE OF NEVADA

REGISTERED PROFESSIONAL ENGINEER - STATE OF NEVADA

DENNIS H. BIANCHI

CIVIL ENGINEER

NO. 13329

STANLEY CONSULTANTS, INC.

A Stanley Group Company

Engineering, Environmental and Construction Services Worldwide

1771 EAST FLAMINGO ROAD, SUITE 104-B LAS VEGAS, NEVADA 89119 (702) 369-9396

DRAWING NO. **307-V784**

SHEET: 11