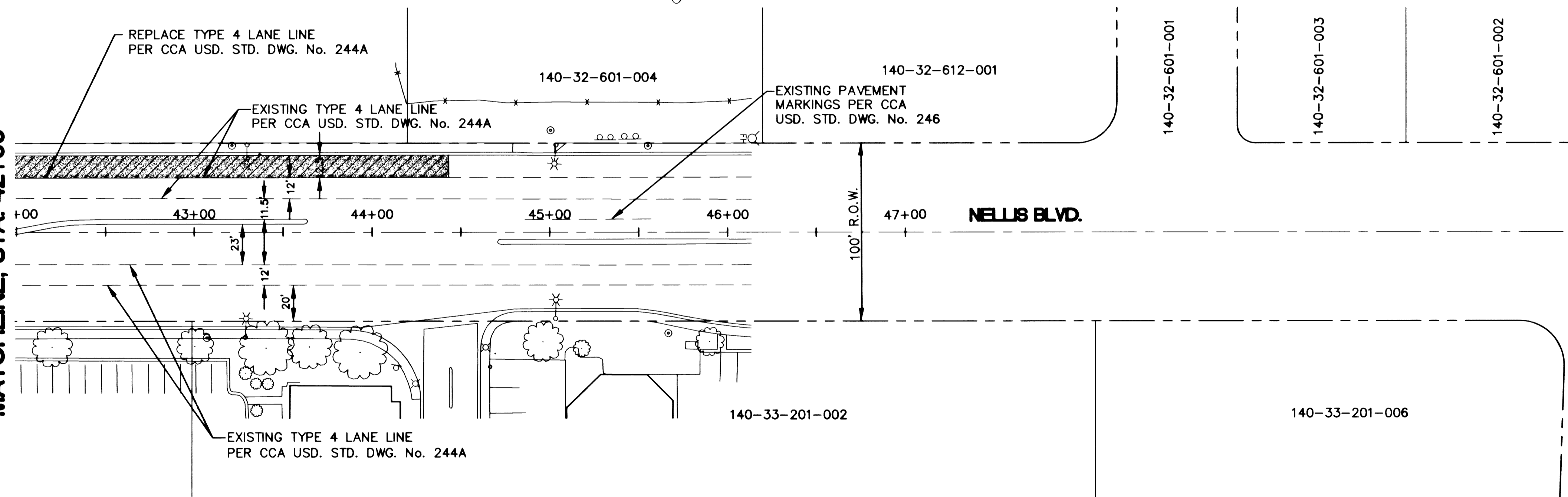
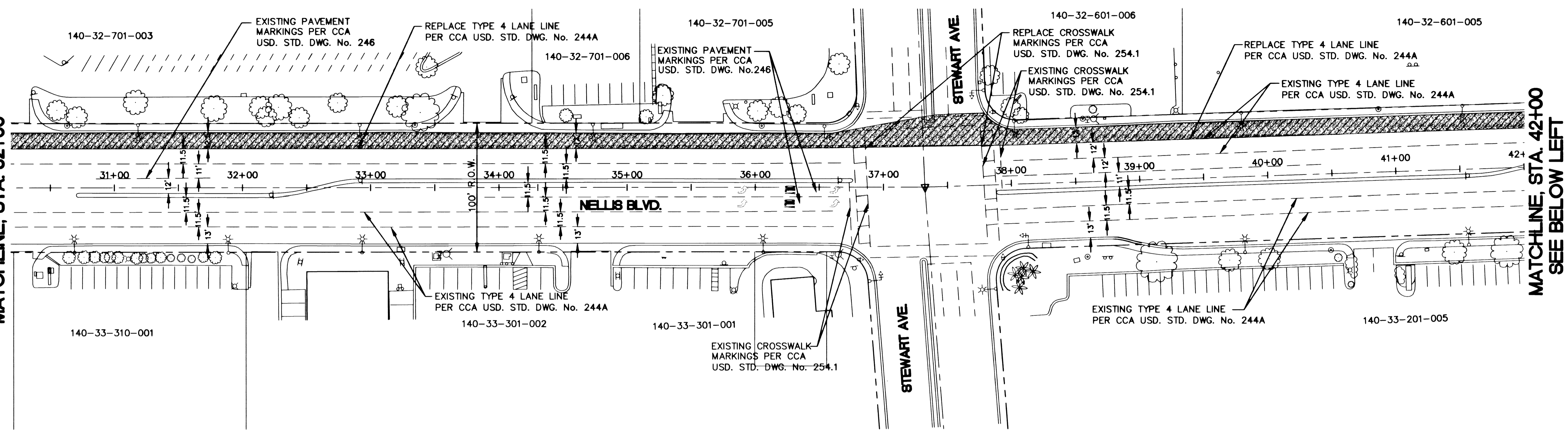


SEE SHEET NO. 9  
MATCHLINE, STA. 32+00

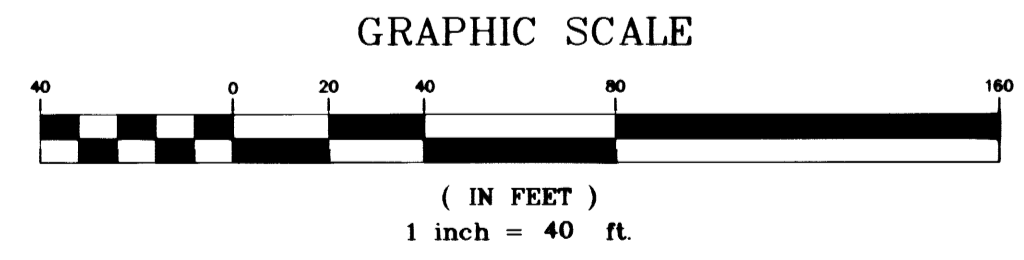
SEE ABOVE RIGHT  
MATCHLINE, STA. 42+00

MATCHLINE, STA. 42+00  
SEE BELOW LEFT



**BASIS OF BEARING**  
 N0°21'06"E - BEING THE WEST LINE OF THE SOUTHWEST QUARTER (SW 1/4) OF SECTION 33, TOWNSHIP 20, RANGE 62 EAST, M.D.M. AS SHOWN ON FILE 62 OF SURVEYS, PAGE 40, OF OFFICIAL RECORDS, CLARK COUNTY, NEVADA.

**BENCHMARK**  
 CITY OF LAS VEGAS BENCHMARK BOOK, PAGE 20-62-SWC BENCHMARK # 40.  
 6C0233W4 - BEING A 2" DOMED BRASS CAP IN TOP OF CURB, NE RETURN, NELLIS BLVD. AND STEWART AVE.  
 NAVD88 ELEVATION:  
 533.6904 METERS  
 1750.95 U.S. SURVEY FEET



REMOVE AND REPLACE EXISTING PCC PAVEMENT

REMOVE AND REPLACE AC PAVEMENT

DATE	
REVISIONS	
DESIGN BY: S. L.	
DRAFTED BY: GAA/RDB	
SCALE (V)	
DATE 01/28/00	
SCALE (H) 1"=40'	
F.L.D. B.K. # N/A	



ENGINEERING DESIGN DIVISION  
 ACTING CITY ENGINEER: JERRY WALKER, P.E.  
 DESIGN ENGINEER: STANLEY CONSULTANTS, INC.  
 BID No. 00.1730.27

DEPARTMENT OF PUBLIC WORKS  
 PROJECT: NELLIS BLVD. SEWER  
 SHEET: EXISTING PAVEMENT MARKING PLAN  
 STA. 32+00 TO STA. 47+00

