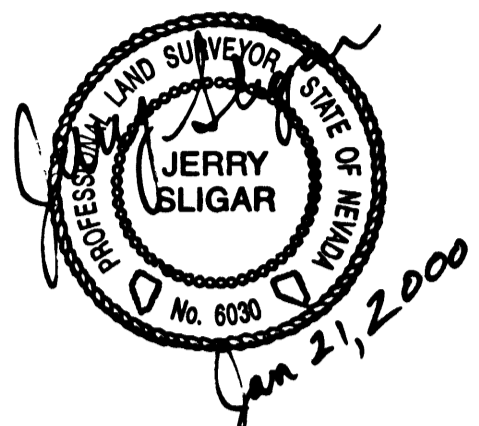


SURVEYOR'S CERTIFICATE

THIS CONTROL SURVEY WAS PREPARED UNDER MY DIRECTION AND SUPERVISION AND WAS COMPLETED ON JULY 15, 1999.

JERRY SLIGAR
PROFESSIONAL LAND SURVEYOR
NEVADA CERTIFICATE NO. 6030



BENCHMARK

CITY OF LAS VEGAS BENCHMARK BOOK, PAGE 20-62-SWC, BENCHMARK # 40.

6C0233W4 - BEING A 2" DOMED BRASS CAP IN TOP OF CURB, NE RETURN, NELLIS BLVD. AND STEWART AVE.

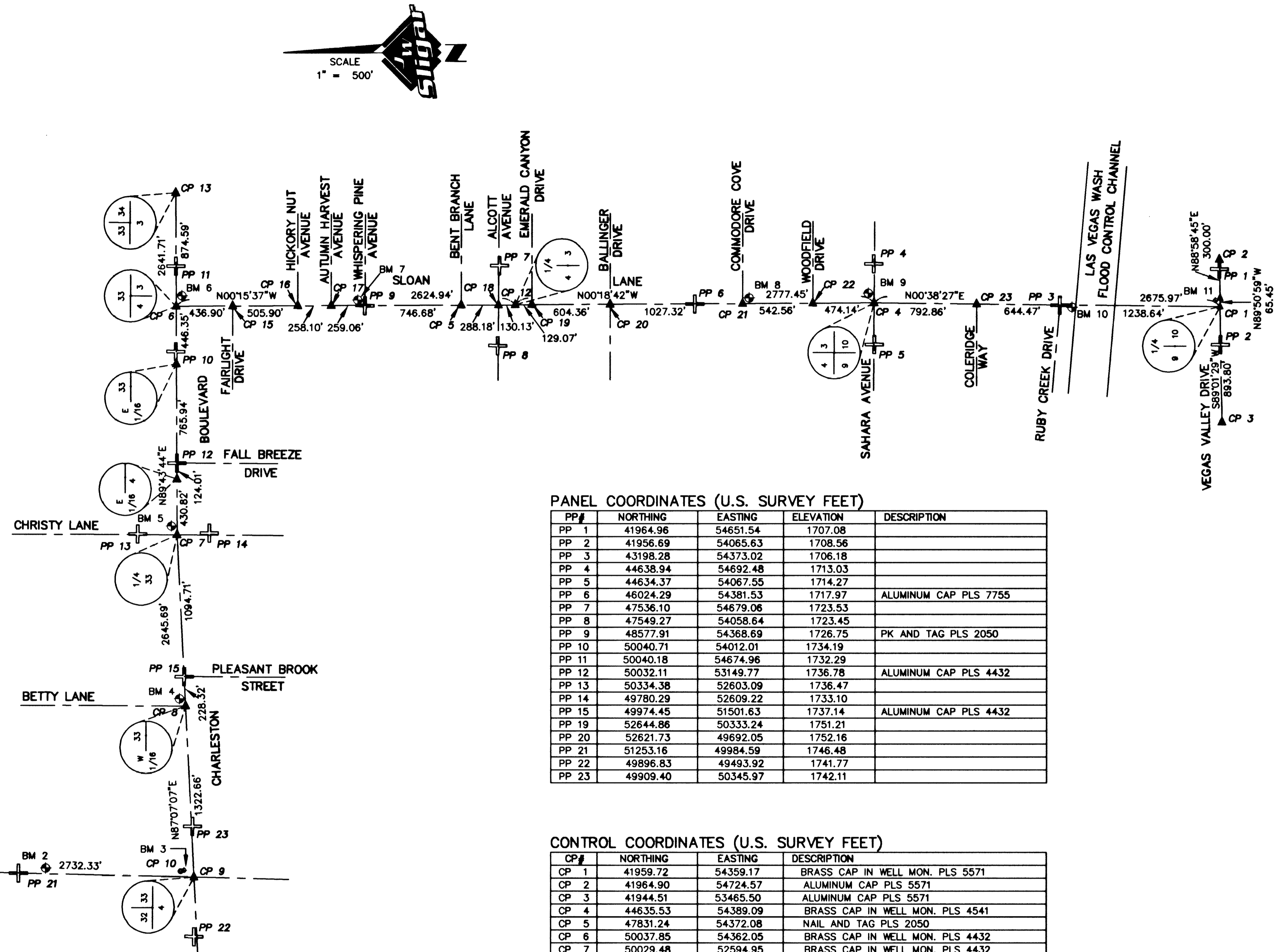
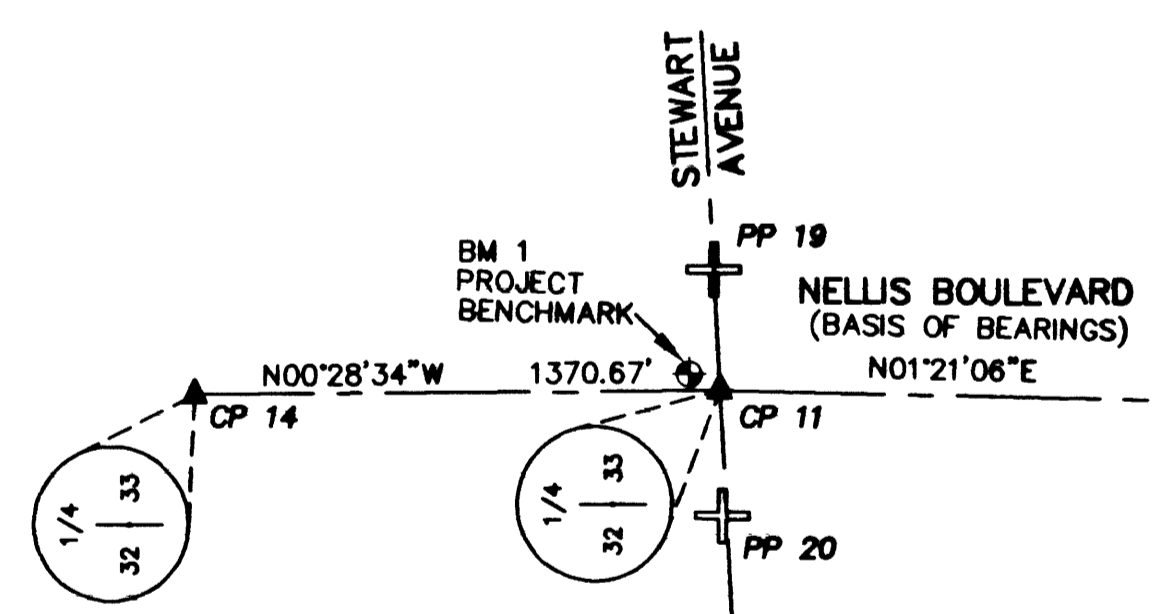
NAVD88 ELEVATION:
533.6904 METERS
1750.95 U.S. SURVEY FEET

BASIS OF BEARINGS

N01°21'06"E - BEING THE WEST LINE OF THE SOUTHWEST QUARTER (SW 1/4) OF SECTION 33, TOWNSHIP 20 SOUTH, RANGE 62 EAST, M.D.M. AS SHOWN ON FILE 62 OF SURVEYS, PAGE 40, OF OFFICIAL RECORDS, CLARK COUNTY, NEVADA.

LEGEND

- CENTERLINE
- ▲ FOUND MONUMENT AS NOTED
- ⊙ BENCHMARK
- CP # CONTROL POINT NUMBER
- PP # PANEL POINT NUMBER
- BM # BENCHMARK NUMBER
- ⊕ PANEL POINT
- ⊙ GIS BRASS CAP



PANEL COORDINATES (U.S. SURVEY FEET)

PP #	NORTHING	EASTING	ELEVATION	DESCRIPTION
PP 1	41964.96	54651.53	1707.08	
PP 2	41956.69	54065.63	1708.56	
PP 3	43198.28	54373.02	1706.18	
PP 4	44638.94	54692.48	1713.03	
PP 5	44634.37	54067.55	1714.27	
PP 6	46024.29	54381.53	1717.97	ALUMINUM CAP PLS 7755
PP 7	47536.10	54679.06	1723.53	
PP 8	47549.27	54058.64	1723.45	
PP 9	48577.91	54368.69	1726.75	PK AND TAG PLS 2050
PP 10	50040.71	54012.01	1734.19	
PP 11	50040.18	54674.96	1732.29	
PP 12	50032.11	53149.77	1736.78	ALUMINUM CAP PLS 4432
PP 13	50334.38	52603.09	1736.47	
PP 14	49780.29	52609.22	1733.10	
PP 15	49974.45	51501.63	1737.14	ALUMINUM CAP PLS 4432
PP 19	52644.86	50333.24	1751.21	
PP 20	52621.73	49692.05	1752.16	
PP 21	51253.16	49984.59	1746.48	
PP 22	49896.83	49493.92	1741.77	
PP 23	49909.40	50345.97	1742.11	

CONTROL COORDINATES (U.S. SURVEY FEET)

CP #	NORTHING	EASTING	DESCRIPTION
CP 1	41959.72	54359.17	BRASS CAP IN WELL MON. PLS 5571
CP 2	41964.90	54724.57	ALUMINUM CAP PLS 5571
CP 3	41944.51	53465.50	ALUMINUM CAP PLS 5571
CP 4	44635.53	54389.09	BRASS CAP IN WELL MON. PLS 4541
CP 5	47831.24	54372.08	NAIL AND TAG PLS 2050
CP 6	50037.85	54362.05	BRASS CAP IN WELL MON. PLS 4432
CP 7	50029.48	52594.95	BRASS CAP IN WELL MON. PLS 4432
CP 8	49962.98	51273.60	BRASS CAP IN CONCRETE PLS 4432
CP 9	49896.49	49952.60	BRASS CAP (ILLEGIBLE)
CP 10	50000.00	50000.00	GIS BRASS CAP #827
CP 11	52628.06	50017.05	BRASS CAP (ILLEGIBLE)
CP 12	47412.94	54373.98	BRASS CAP IN WELL MON. PLS 7635
CP 13	50041.99	55236.63	BRASS CAP IN WELL MON. PLS 4432
CP 14	53998.69	50005.67	2" BRASS CAP PLS 1799
CP 15	49600.96	54364.04	ALUMINUM CAP PLS 7635
CP 16	49095.06	54366.34	ALUMINUM CAP PLS 12139
CP 17	48836.96	54367.51	ALUMINUM CAP PLS 12139
CP 18	47543.06	54373.39	PK AND TAG PLS 2050
CP 19	47283.87	54374.68	ALUMINUM CAP (ILLEGIBLE)
CP 20	46679.52	54377.97	ALUMINUM CAP PLS 7635
CP 21	45652.21	54383.56	ALUMINUM CAP (ILLEGIBLE)
CP 22	45109.66	54386.51	ALUMINUM CAP (ILLEGIBLE)
CP 23	43842.71	54380.22	PK NAIL

CLARK COUNTY BENCHMARKS

BM #	ELEVATION	DESCRIPTION
BM 1	1750.95'	6C0233W4 - 2" DOMED BRASS CAP IN TOP OF CURB
BM 2	1744.95'	6C0233SW6 - RIVET AND PLATE IN TOP OF CURB
BM 3	1742.55'	3C0233SWS - RIVET AND PLATE
BM 4	1737.37'	3C0233SW6 - RIVET AND PLATE
BM 5	1736.24'	3C0233S4 - RIVET AND PLATE IN TOP OF CURB
BM 6	1732.61'	4C123NWS - RIVET AND PLATE
BM 7	1726.54'	4C123NWW6 - RIVET AND PLATE
BM 8	1716.54'	4C123SWW6 - RIVET AND PLATE
BM 9	1712.09'	8C123SWS - RIVET AND PLATE
BM 10	1710.89'	4C129NEE6 - RIVET AND PLATE
BM 11	1707.67'	10W4 - RIVET AND PLATE IN TOP OF CURB

* - ALSO IN CITY OF LAS VEGAS BENCHMARK BOOK

DATE		REVISIONS		W.A. #		SCALE (V)		DATE	
SCALE (H) 1" = 500'					SCALE (V) N/A				
FLD. BK. # N/A					DESIGN BY ROB/GAA				
PROJECT: DEPARTMENT OF PUBLIC WORKS					ENGINEERING DESIGN DIVISION				
SHEET: NELLIS BLVD. SEWER					ACTING CITY ENGINEER: JERRY WALKER P.E.				
CONTROL PLAN					DESIGN ENGINEER: STANLEY CONSULTANTS				

JW Sligar, INC.
LAND SURVEYING
Mapping • Consulting

820 S. Valley View Boulevard
Las Vegas, Nevada 89107
870-7333 Fax 870-7613

Stanley Consultants inc.
1771 EAST FLAMINGO ROAD, SUITE 104-B
LAS VEGAS, NEVADA 89119 (702) 360-9366

A Stanley Group Company
Engineering, Environmental
and Construction Services
Worldwide

DRAWING NO. 4
307-V784 A
11