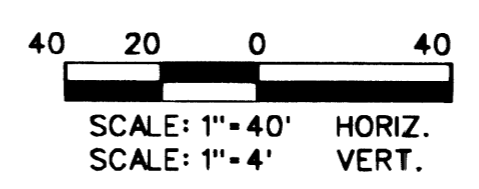


Avoid cutting underground utility lines. It's costly.
 Call before you Dig
 1-800-227-2600

Avoid cutting underground utility lines. It's costly.
 Call before you Overhead
 1-702-593-6111



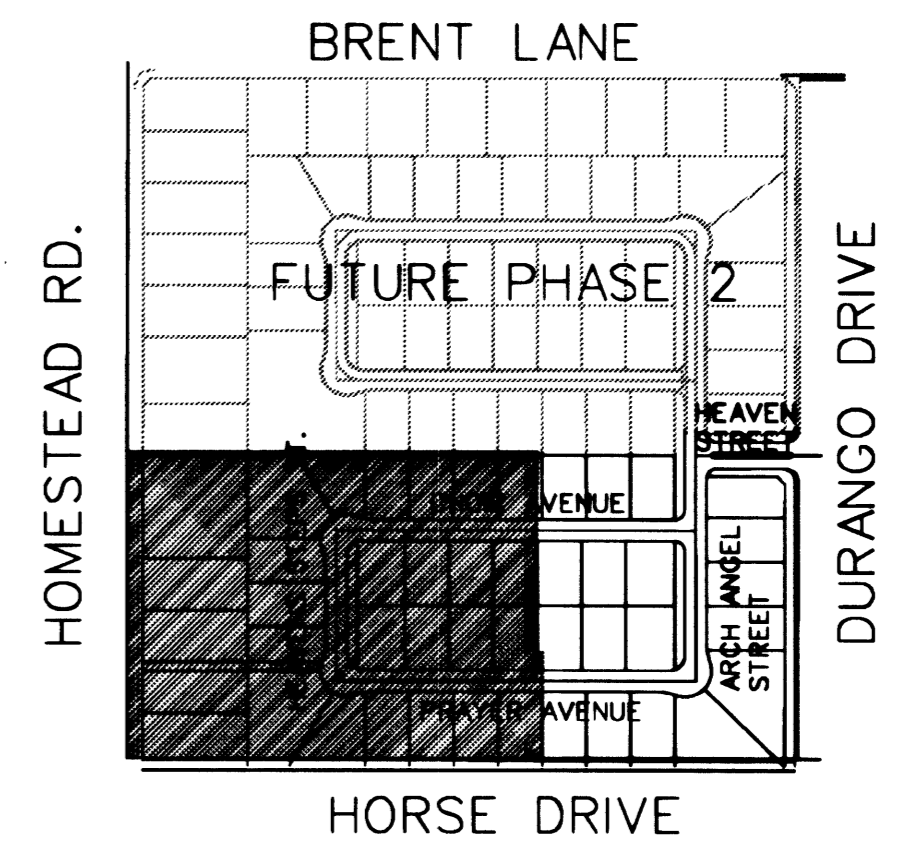
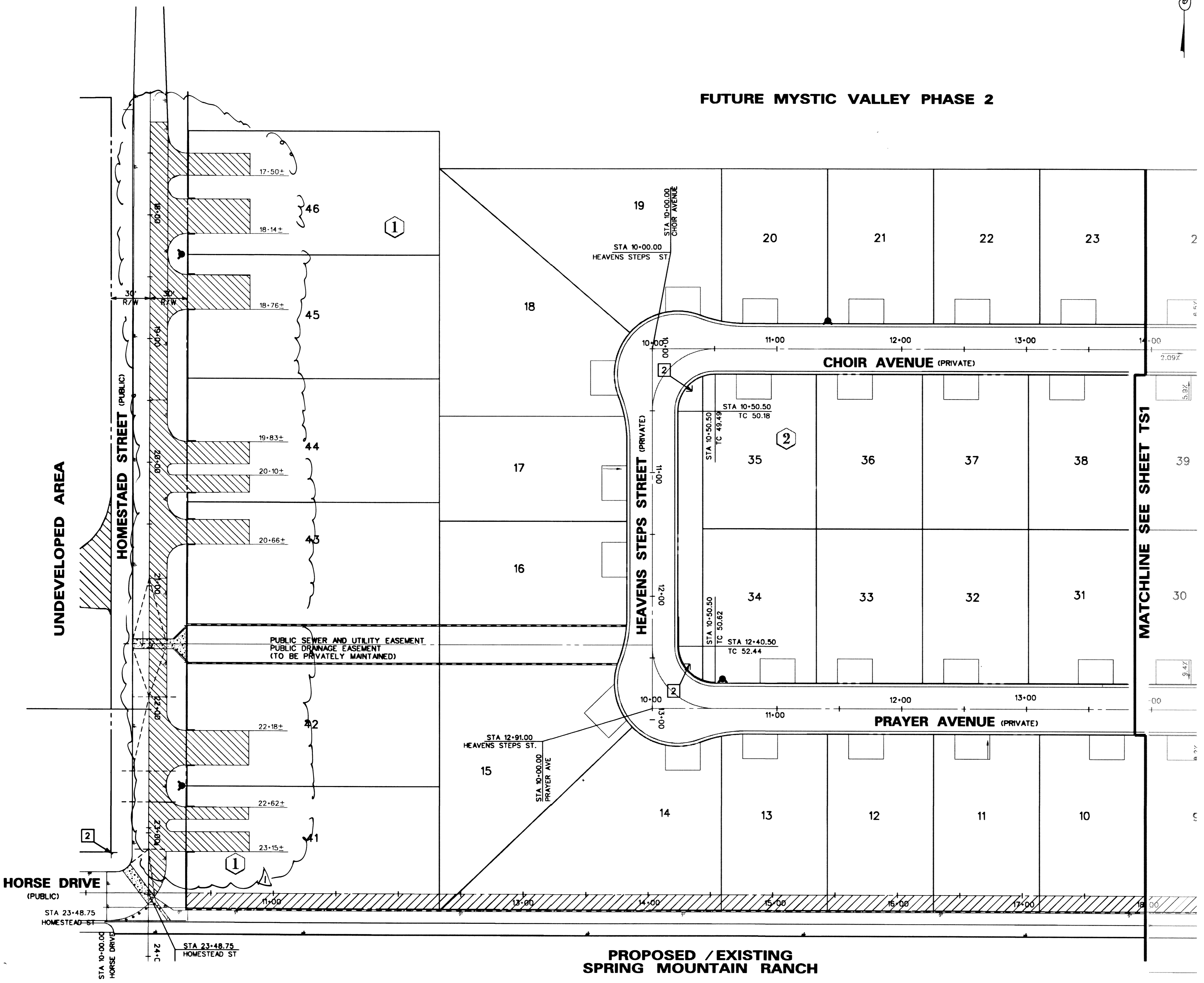
BASIS OF BEARING

NORTH 00°15'13" EAST, BEING THE BEARING OF THE EAST LINE OF THE NORTHEAST QUARTER (NE 1/4) OF THE NORTHEAST QUARTER (NE 1/4) OF SECTION 8, TOWNSHIP 19 SOUTH, RANGE 80 EAST, M.D.M. CLARK COUNTY, NEVADA AS SHOWN ON THE MAP IN FILE 87, OF SURVEYS, PAGE 83, OFFICIAL RECORDS OF CLARK COUNTY, NEVADA.

BENCHMARK

C.I.V. BENCHMARK: 1V90-BNES
 BLM BRASS CAP AT THE INTERSECTION OF DURANGO DRIVE AND IRON MOUNTAIN ROAD
 NAVD 1988 ELEV 771.9589 METERS (2532.70 FEET)

FUTURE MYSTIC VALLEY PHASE 2



LOCATION MAP

STREET SIGNAGE NOTES

- 1 INSTALL 24" x 24" R1-1 STOP SIGN
- 2 INSTALL STREET NAME SIGN 6"
- 3 INSTALL END OF ROAD MARKERS

DATE	BY	REVISION
11/14/98	G. HOWELL	1
11/14/98	E. SERRANO	2
4/26/99	J. W. LELAND	3
98-9031-03		

RICHMOND AMERICAN HOMES OF NEVADA
 6280 S. Valley View Blvd.
 Suite 200
 Las Vegas, NV 89118
 Las Vegas, NV 89118
 Fax: (702) 368-0047
 (702) 240-8888

SIGNAGE, STRIPING AND STREETLIGHTING PLAN (WEST HALF)
 MYSTIC VALLEY PHASE I

DRAWN BY: G. HOWELL, W. KIM
 DESIGNED BY: E. SERRANO, M. BELEN
 CHECKED BY: J. W. LELAND
 PROJECT NO: 98-9031-03
 SCALE: 1"=40' HORIZ.

SHEET **TS2**
 10 OF 18 SHEETS
 DRAWING NO. 207Y-4599-1

40355

RELOT