

STREET LIGHTING SPECIFICATIONS  
240 VOLT SINGLE PHASE TWO WIRE SYSTEM

UNDERGROUND

STREET LIGHTING STANDARDS SHALL BE AS SHOWN BY DRAWING NO. 400.1 PAGE 40 OF UNIFORM STANDARD DRAWINGS AND MUST CONFORM TO SECTIONS 400 AND 405 AND ANY OTHER APPLICABLE SECTIONS OF THE UNIFORM STANDARD SPECIFICATIONS.

ON 80' R/W STREETS THERE SHALL BE TWO POLES ON DIAGONAL CORNERS.

ON 100' R/W STREETS THERE SHALL BE ONE POLE AT EACH CORNER.

HIGH PRESSURE SODIUM LUMINAIRES TO BE USED ON 51' R/W AND 60' R/W STREETS SHALL BE 100 WATT, 240 VOLT I.E.S. DISTRIBUTION TYPE 3, WITH INTEGRAL CONSTANT WATTAGE BALLASTS, SIMILAR TO GENERAL ELECTRIC TYPE M250A CATALOGUE #C728G584 OR APPROVED EQUAL.

HIGH PRESSURE SODIUM LUMINAIRES TO BE USED ON 80' R/W STREETS AND OVER, SHALL BE 250 WATT 240 VOLT I.E.S. DISTRIBUTION TYPE 3 WITH INTEGRAL CONSTANT WATTAGE BALLAST SIMILAR TO GENERAL ELECTRIC TYPE M-400A, CATALOGUE #C724G804 OR APPROVED EQUAL.

100 WATT HIGH PRESSURE SODIUM LAMPS SHALL BE SYLVANIA LU100 OR APPROVED EQUAL.

250 WATT HIGH PRESSURE SODIUM LAMPS SHALL BE SYLVANIA LU250 OR APPROVED EQUAL.

PHOTO CELL AND CONTROL TO BE 120 VOLTS. OSHER-PIERCE 6660 OR APPROVED EQUAL.

SPACING OF STANDARDS SHALL BE 180 FEET MAXIMUM ON 51' R/W AND 60' R/W STREETS ON ONE SIDE.

SPACING OF STANDARDS SHALL BE 180 FEET MAXIMUM ON 80' R/W STREETS ON EACH SIDE AND STAGGERED.

SPACING OF STANDARDS ON 100' R/W STREETS OR MORE SHALL BE 120 FEET MAXIMUM ON EACH SIDE AND STAGGERED.

ALL STANDARDS TO BE SET 18" BACK OF CURB.

SCHEDULE 40 RIGID NON-METALLIC CONDUIT (PVC) OR APPROVED EQUAL COMPLYING WITH ARTICLE 347 OF THE NATIONAL ELECTRICAL CODE MAY BE USED FOR UNDERGROUND APPLICATIONS AND TO BE WITHIN 12" BACK OF CURB AND 24" COVER.

FUSE HOLDERS AND CONNECTORS SHALL BE INSTALLED IN THE BASES OF ALL LIGHTING STANDARDS; THE FUSE HOLDERS SHALL BE BUSS-TRON-HEX-AA, WITH RUBBER BOOTS.

BASE COVERS FOR LIGHTING STANDARDS ARE NOT TO BE INSTALLED BEFORE BREAKOUT CAPS ARE PLACED AND INSPECTED. ALL MATERIAL USED IN UNDERGROUND WIRING, IN BREAKOUT CAPS AND UNDER BASE COVERS TO BE INSPECTED BEFORE INSTALLATION.

FOUNDATIONS SHALL BE CONSTRUCTED AND LOCATED TO LINE AND GRADE AS DIRECTED BY THE FIELD ENGINEER.

LIGHTING STANDARD AND MAST ARM CABLE TO LUMINAIRE SHALL BE 10/2 U.F. TYPE 600 VOLT COPPER CABLE.

THE CONTRACTOR SHALL BE RESPONSIBLE FOR AVOIDING DAMAGE TO PROPERTY, EITHER PUBLIC OR PRIVATE AND IN THE EVENT OF SUCH DAMAGE, SHALL MAKE SATISFACTORY REPAIRS AT HIS OWN EXPENSE.

THE CONTRACTOR SHALL FURNISH COMPLETE SERVICE TO TRANSFORMERS AND CONTROL SYSTEMS, IF REQUIRED.

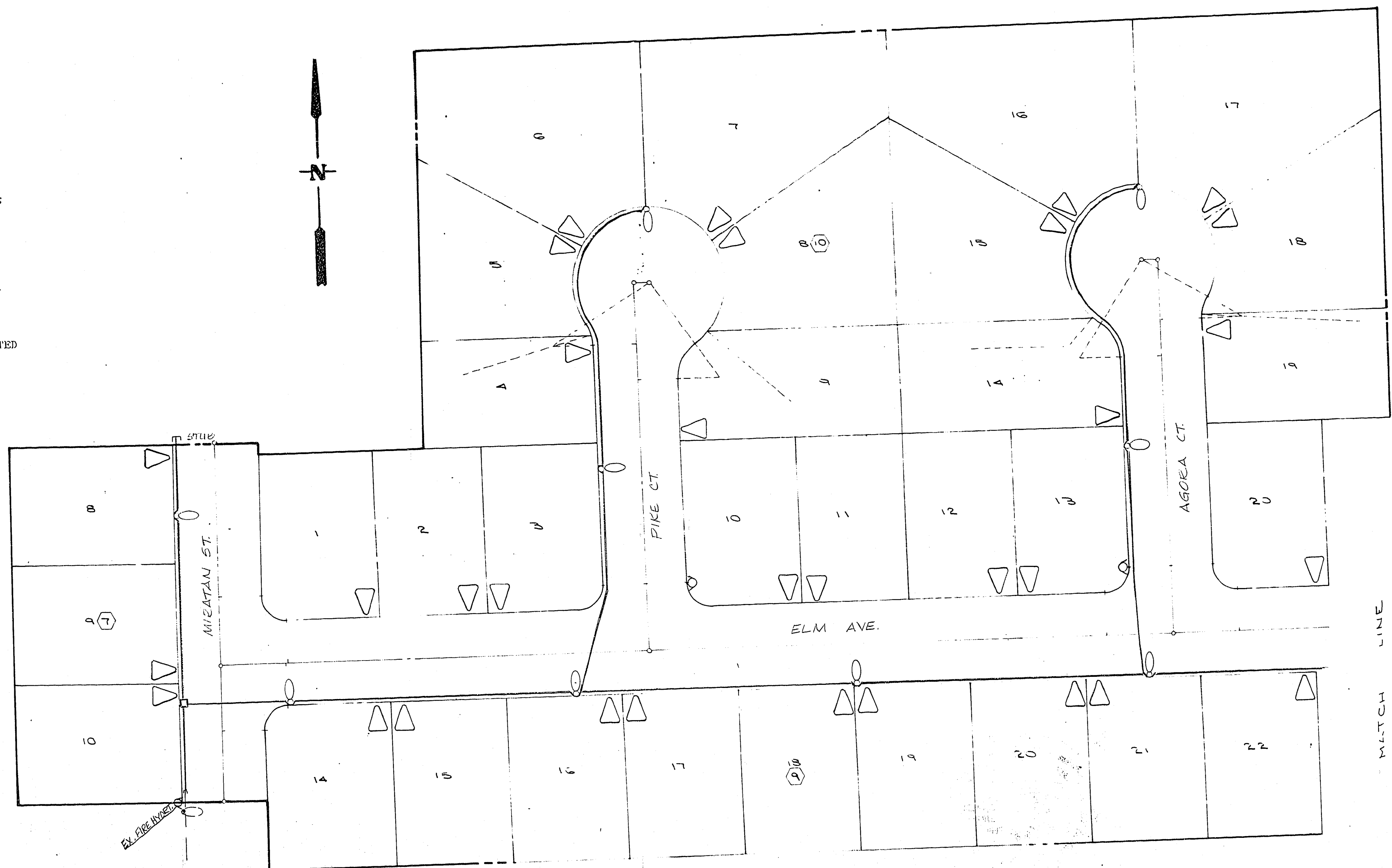
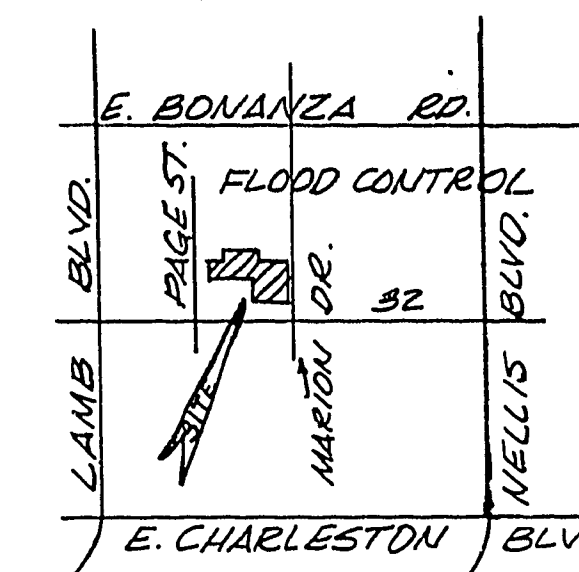
THE SERVICE POINT STANDARD IS TO BE INSTALLED AT THE APPROVED LOCATION SHOWN ON PLANS AND TO CONFORM TO DRAWING NO. 401.1 PAGE 44 OF THE UNIFORM STANDARD DRAWINGS.

IN THE SELECTION OF 100 AND 250 WATT HIGH PRESSURE SODIUM LUMINAIRES TO BE USED IN A PARTICULAR DEVELOPMENT ONE APPROVED MANUFACTURER SHALL BE SPECIFIED.

THESE SPECIFICATIONS TO BECOME EFFECTIVE ON ALL CITY OF LAS VEGAS MULTIPLE STREET LIGHTING DESIGNS APPROVED ON OR AFTER JUNE 1, 1977.

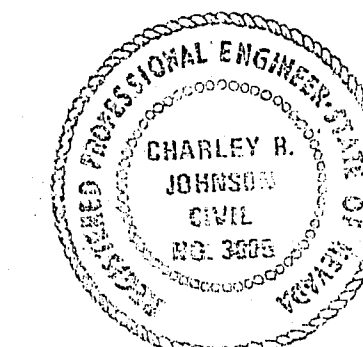
THESE SPECIFICATIONS SHALL BE SUPERSEDED BY ANY REVISED SPECIFICATIONS IN EXISTENCE AT THE TIME OF INSTALLATION.

VICINITY MAP - N.T.S.



QUANTITIES ESTIMATE

- 250 WATT HPS LUMINAIRE 2 EA.
- 100 WATT HPS LUMINAIRE 14 EA.
- NO 3/4 PULL BOX W/METAL COVER 1 EA.
- 1/4" PVC CONDUIT 2740 LF
- △ DRIVEWAY LOCATION
- SERVICE WIRES - 2 #2'S @ 1 #6 THW
- FIELD WIRE - 2 #4'S THW



SUBMITTED BY

Charley R. Johnson 10/16/78  
CHARLEY R. JOHNSON, P.E. DATE  
NEVADA CERTIFICATE NO. 3005

Nevada Power Company approves the point of service to the street light system. This shall not be deemed to consent to the placement of the light poles which may be in conflict with Nevada Power Company's prior rights and/or facilities.  
10-12-78  
(Date)  
Michael B. Coleman  
NEVADA POWER COMPANY

CONSULTING ENGINEERS • PLANNERS  
2209 PARADISE ROAD, LAS VEGAS, NEVADA 89105  
702 735-0227

**METROPOLITAN PARK - UNIT NO 20**

**MASTER STREETLIGHT & DRIVEWAY LOCATION PLAN**  
SHEET 2 OF 2

|               |                 |               |       |    |
|---------------|-----------------|---------------|-------|----|
| SCALE:        | WO. NO. 2529-20 | DATE 10/16/78 | SHEET | OF |
| HORIZ: 1"=40' | DES: COS        | REV:          | 12    | 12 |
| VERT:         | CHK:            | REV:          |       |    |

30-7-14 2074-2161-20