

SPECIFICATIONS

Standards for 51' R/W and 60' R/W street shall be Pacific Union Metal Co. Design P.B.330-B1-8 or P.B.1130-B1-8 with Modifications L-39 and 14, or approved equal.

Standards for 80' R/W streets and over shall be Pacific Union Metal Co. Design P.B.330-B1-8 or P.B.1130-B1-8 with Modification 14, or approved equal.

Incandescent Luminaires to be used only on 51' R/W and 60' R/W streets shall be I.E.S. Distribution Type III, Lines Materials Catalog No. LCSA31, or approved equal, with 2500 lumens, 6.6 amp., series circuit, P.S. 35 group replacement lamps.

Mercury Vapor Luminaires to be used on 80' R/W streets shall be I.E.S. Distribution Type II, General Electric Catalog No. C7060G043, Type No. M-250R, with built-in Power Pack Series Ballast, 6.6 amps, mounted with a 2" slip-fitter, or approved equal.

Mercury Vapor Lamps to be used on 80' R/W streets shall be Westinghouse Catalog No. H5K/W, 150 watt Colortone Hi-output white, 12,500 lumens or approved equal.

Mercury Vapor Luminaires to be used on 100' R/W streets or over shall be I.E.S. Distribution Type III, General Electric Catalog No. C704G010, Type M-400, with built-in Power Pack Series Ballast, 6.6 amps, mounted with a 2" slip-fitter, or approved equal.

Mercury Vapor Lamps to be used on 100' R/W streets or more shall be Westinghouse Catalog No. H33-L-G/W, 400 watt Colortone Hi-output white, WDLG, 25,000 lumens or approved equal.

Foundations shall be constructed and located to line and grade as directed by the Field Engineer.

Overhead wires shall be No. 6 MHD solid bare copper.

Wire in mast arms and underground conduit shall be No. 8 A.W.G. solid copper, 5 K.V. with 10/64 inch P.V. insulation.

Spacing of standards shall be 180 feet maximum.

The contractor shall be responsible for avoiding damage to property, either public or private, and, in the event any such damage, shall make satisfactory repairs at his own expense.

Standards shall receive two (2) finish coats of an approved aluminum paint. The first coat shall be applied prior to erection. The second shall be applied after erection.

Handhole modifications, equal in size to Mod. A-C (20 square inch minimum opening) shall be provided on all standards requiring underground wiring.

Underground conduit shall be rigid wrapped and shall meet all requirements of the City of Las Vegas. A minimum of 1 inch diameter for single wire and 1 1/2 inch for 2-wire installations shall be used.

At the discretion of the Field Engineer, and approved P.V.C. conduit may be substituted but only under those areas which at no time will be subject to wheel traffic.

The contractor shall furnish complete service to transformers and control systems if required.

The field in location is shown subject to availability of power at said location when needed.

Standards used on 51' R/W streets to be set 26.5' from center line of street (within 3' utility easement).

Standards used on 60' R/W streets and (41' B.C. to B.C.) to be set 26.5' from center line of street (bet. property line and back edge of sidewalk).

Standards used on 80' R/W streets and (50' B.C. to B.C.) to be set 3' from center line of street (within 3' utility easement).

Standards used on 80' R/W and over to be set 18" back of curb.

STREET LIGHT SPECIFICATIONS

Standards for 51' R/W and 60' R/W streets shall be Pacific Union Metal Co. Design P.B.330-B1-8 or P.B.1130-B1-8 with Modifications L-39 and 14, or approved equal.

Standards for 80' R/W streets and over shall be Pacific Union Metal Co. Design P.B.330-B1-8 or P.B.1130-B1-8 with Modification 14, or approved equal.

Incandescent Luminaires to be used only on 51' R/W and 60' R/W streets shall be I.E.S. Distribution Type III, Lines Materials Catalog No. LCSA31, or approved equal, with 2500 lumens, 6.6 amp., series circuit, P.S. 35 group replacement lamps.

Mercury Vapor Luminaires to be used on 80' R/W streets shall be I.E.S. Distribution Type II, General Electric Catalog No. C7060G043, Type No. M-250R, with built-in Power Pack Series Ballast, 6.6 amps, mounted with a 2" slip-fitter, or approved equal.

Mercury Vapor Lamps to be used on 80' R/W streets shall be Westinghouse Catalog No. H5K/W, 150 watt Colortone Hi-output white, 12,500 lumens or approved equal.

Mercury Vapor Luminaires to be used on 100' R/W streets or over shall be I.E.S. Distribution Type III, General Electric Catalog No. C704G010, Type M-400, with built-in Power Pack Series Ballast, 6.6 amps, mounted with a 2" slip-fitter, or approved equal.

Mercury Vapor Lamps to be used on 100' R/W streets or more shall be Westinghouse Catalog No. H33-L-G/W, 400 watt Colortone Hi-output white, WDLG, 25,000 lumens or approved equal.

Foundations shall be constructed and located to line and grade as directed by the Field Engineer.

Overhead wires shall be No. 6 MHD solid bare copper.

Wire in mast arms and underground conduit shall be No. 8 A.W.G. solid copper, 5 K.V. with 10/64 inch P.V. insulation.

Spacing of standards shall be 180 feet maximum.

The contractor shall be responsible for avoiding damage to property, either public or private, and, in the event any such damage, shall make satisfactory repairs at his own expense.

Standards shall receive two (2) finish coats of an approved aluminum paint. The first coat shall be applied prior to erection. The second shall be applied after erection.

Handhole modifications, equal in size to Mod. A-C (20 square inch minimum opening) shall be provided on all standards requiring underground wiring.

Underground conduit shall be rigid wrapped and shall meet all requirements of the City of Las Vegas. A minimum of 1 inch diameter for single wire and 1 1/2 inch for 2-wire installations shall be used.

At the discretion of the Field Engineer, and approved P.V.C. conduit may be substituted but only under those areas which at no time will be subject to wheel traffic.

The contractor shall furnish complete service to transformers and control systems if required.

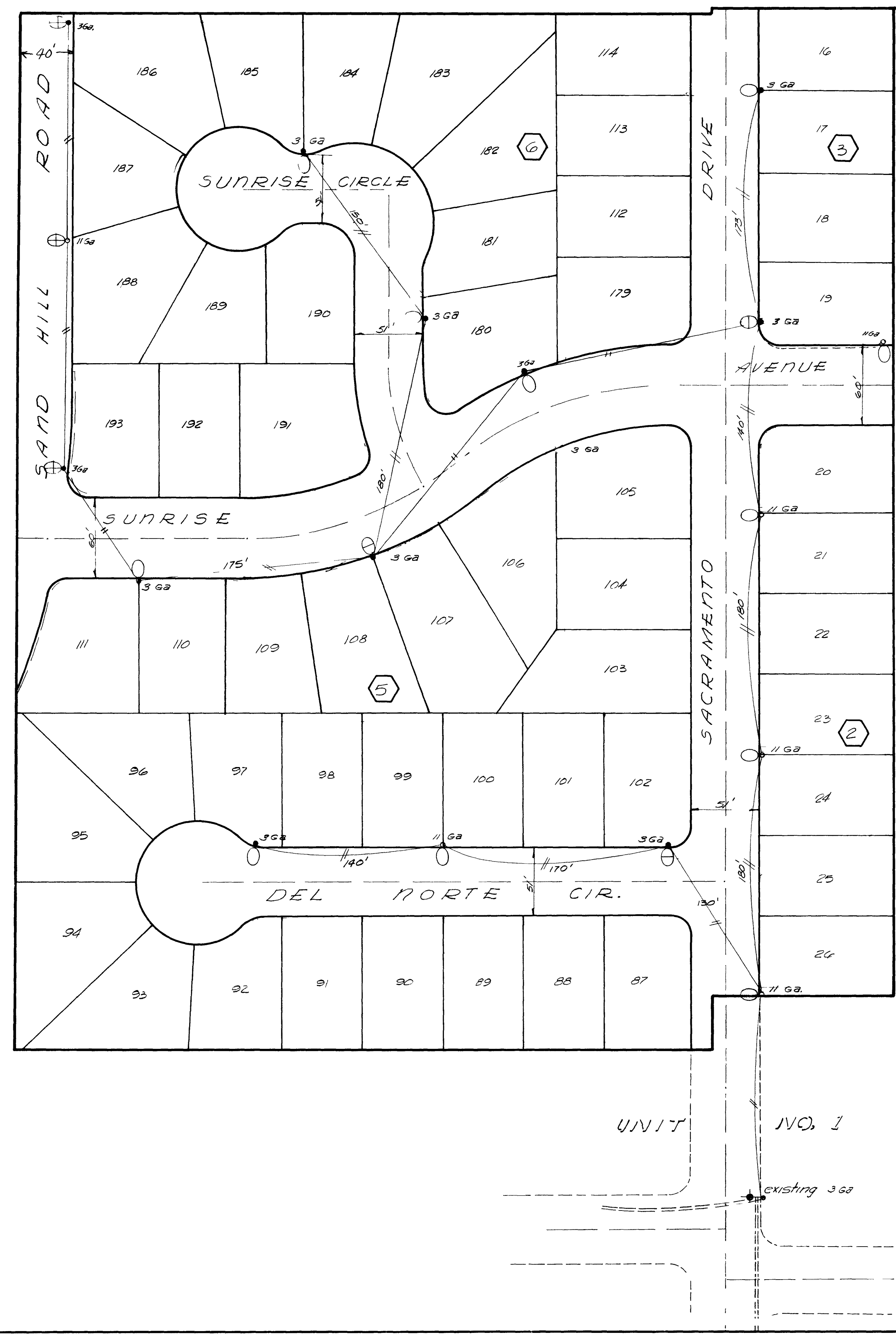
The field in location is shown subject to availability of power at said location when needed.

Standards used on 51' R/W streets to be set 26.5' from center line of street (within 3' utility easement).

Standards used on 60' R/W streets and (41' B.C. to B.C.) to be set 26.5' from center line of street (bet. property line and back edge of sidewalk).

Standards used on 80' R/W streets and (50' B.C. to B.C.) to be set 3' from center line of street (within 3' utility easement).

Standards used on 80' R/W and over to be set 18" back of curb.



ESTIMATE OF QUANTITIES

3 68 LIGHT POLES	11 Req'd
11 68 LIGHT POLES	6 Req'd
3' utility easement	
6' utility easement	
175 W Merc Vapor Lum	11 Req'd
250 W Merc Vapor Lum	3 Req'd
400 W Merc Vapor Lum	3 Req'd

APPROVALS

R. J. [Signature]
CITY ENGINEER 4-5-63
DATE

Leo J. [Signature]
CITY ELECTRICIAN 3-29-63
DATE

Hugh P. [Signature]
ABVADA POWER CO. 7-26-62
DATE

MEADOW UNIT HOMES NO. 3

STREET LIGHT PLAN

DESIGNED <i>ES</i>	WESTERN ENGINEERS, INC. LAS VEGAS NEVADA	SHEET 1
DRAWN <i>LD</i>		OF 1
CHECKED		APPROVED <i>[Signature]</i> DATE <i>7/1/62</i>

