

Mc NEIL MANOR #2B

STREET LIGHT SPECIFICATIONS
(SEE CURRENT C.L.V. SPECIFICATIONS DATED 6-7-1963)

Standards for 51' R/W # 60' R/W streets shall be Pacific Union Metal Co. Design # 330-11-8 or F.R. 1130-11-8 with Modifications 1-39 and 14, or approved equal. There shall be at least one pole at each intersection.

Standards for 80' R/W streets and over, shall be Pacific Union Metal Co. Design F.R. 300-11-8 or F.R. 130-11-8 with Modification 14, or approved equal.

On 100' R/W streets there shall be 2 poles on diagonal corners.

Mercury Vapor Luminaires to be used on 51' R/W # 60' R/W streets, except at intersections, shall be 175 watt, series circuit, 6.6 amp., I.E.S. Distribution Type 2, General Catalog # 4144A or approved equal.

Mercury Vapor Lamps to be used on 51' R/W # 60' R/W streets, except at intersections, shall be 175 watt, Colortone Hi-output white, 7900 lumens, G.E. Catalog # 4144A or approved equal.

Mercury Vapor Luminaires to be used on 80' R/W streets, at intersecting minor streets, shall be 250 watt, series circuit, 6.6 amp., I.E.S. Distribution Type 2, General Electric Catalog # C706G043, Type M-250R or approved equal.

Mercury Vapor Lamps to be used on 80' R/W streets at intersecting minor streets, shall be 250 watt, Colortone Hi-output white, 11900 lumens, G.E. Catalog # 4144A or approved equal.

Mercury Vapor Luminaires to be used on 100' R/W streets and over, shall be 400 watt, series circuit, 6.6 amp., I.E.S. Distribution Type 3, General Electric Catalog # C704G010 Type M-400, mounted with a 2" slip-fitter, or approved equal.

Mercury Vapor Lamps to be used on 100' R/W streets and over shall be 400 watt, Colortone Hi-output white, 19000 lumens, G.E. Catalog # 4144A or approved equal.

Foundations shall be constructed and located in line and grade as directed by the Field Engineer.

Overhead wire shall be #6 MHD solid bare copper.

Wire in mast arms and underground conduit shall be #8 A.W.G. solid copper, 5 K.V. with 10/64 inch P.V.C. insulation.

Spacing of standards shall be 180 feet maximum on 51' R/W and 60' R/W streets on one side. Spacing of standards shall be 180 feet maximum on 80' R/W streets on both sides, staggered. Spacing standards on 100' R/W streets or more shall be 120' maximum on both sides and staggered.

The contractor shall be responsible for avoiding damage to property, either public or private, and, in the event any such damage, shall make satisfactory repairs at his own expense.

Standards shall receive two (2) finish coats of an approved aluminum paint. The first coat shall be applied prior to erecting. The second shall be applied after erection.

Handhole modifications, equal in size to Mod. 20 (20 square inch minimum opening) shall be provided on all standards requiring underground wiring.

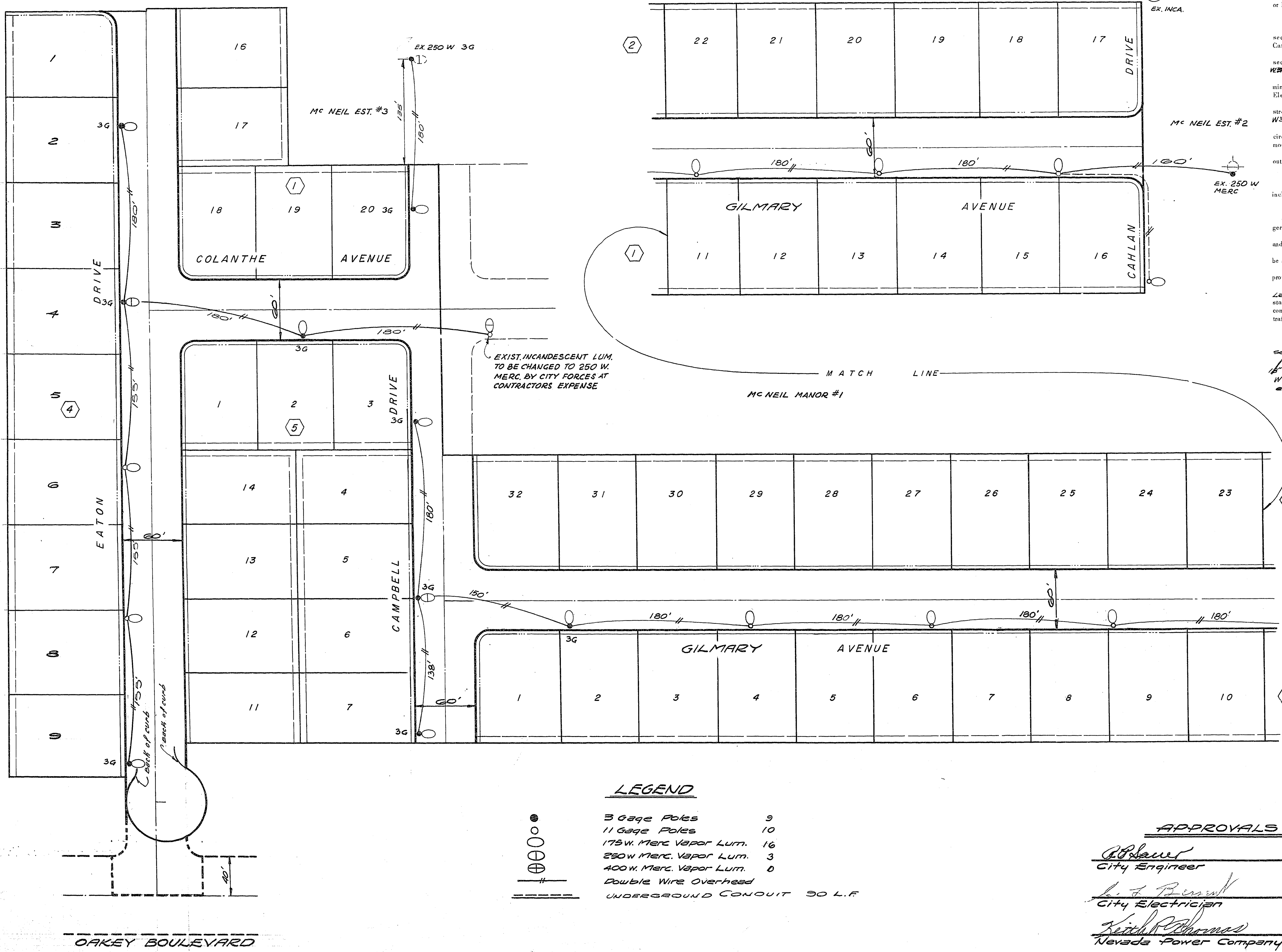
Underground conduit shall be rigid wrapped and shall meet all requirements of the City of Las Vegas. A minimum of 1 inch diameter for single wire and 1 1/2 inch for 2-wire installations shall be used. At the discretion of the Field Engineer, an approved P.V.C. conduit may be substituted, but only under those areas which at no time will be subject to wheel traffic.

The contractor shall furnish complete service to transformers and control systems if required. The location is shown subject to availability of power at said location when needed.

Standards used on 51' R/W streets shall be set 20' from center line.

Standards used on 80' R/W streets & over to be set 15' back of curb.

When the alignment of the poles makes an angle exceeding 12° 30' a 3 gauge pole shall be used.



LEGEND

- 3 Gauge Poles 9
- 11 Gauge Poles 10
- ⊕ 175W. Merc. Vapor Lum. 16
- ⊕ 250W. Merc. Vapor Lum. 3
- ⊕ 400W. Merc. Vapor Lum. 0
- Double Wire Overhead
- UNDERGROUND CONDUIT 30 L.F.

APPROVALS

Robert [Signature] 10-2-63
City Engineer Date

W. J. [Signature] 9-17-63
City Electrician Date

Richard [Signature] 4-4-63
Nevada Power Company Date

REV.	DATE	DESCRIPTION	BY	APPR.
D				
C	3-10-71	ELIMINATED P.O.L. ON CORNER	J.L.P.	J.L.P.
B	3-9-71	REV. INTERSECTING DRIVE	J.L.P.	J.L.P.
A	8/13/63	CHANGED STD.'S LOCATION	M.R.	J.P.W.

Mc NEIL MANOR TRACT 2-A

STREET LIGHTING PLAN

DESIGNED BY WESTERN ENGINEERS, INC. SHEET / OF /

DRAWN BY LAS VEGAS, NEVADA

CHECKED BY APPROVED [Signature] DATE 4/16/63