

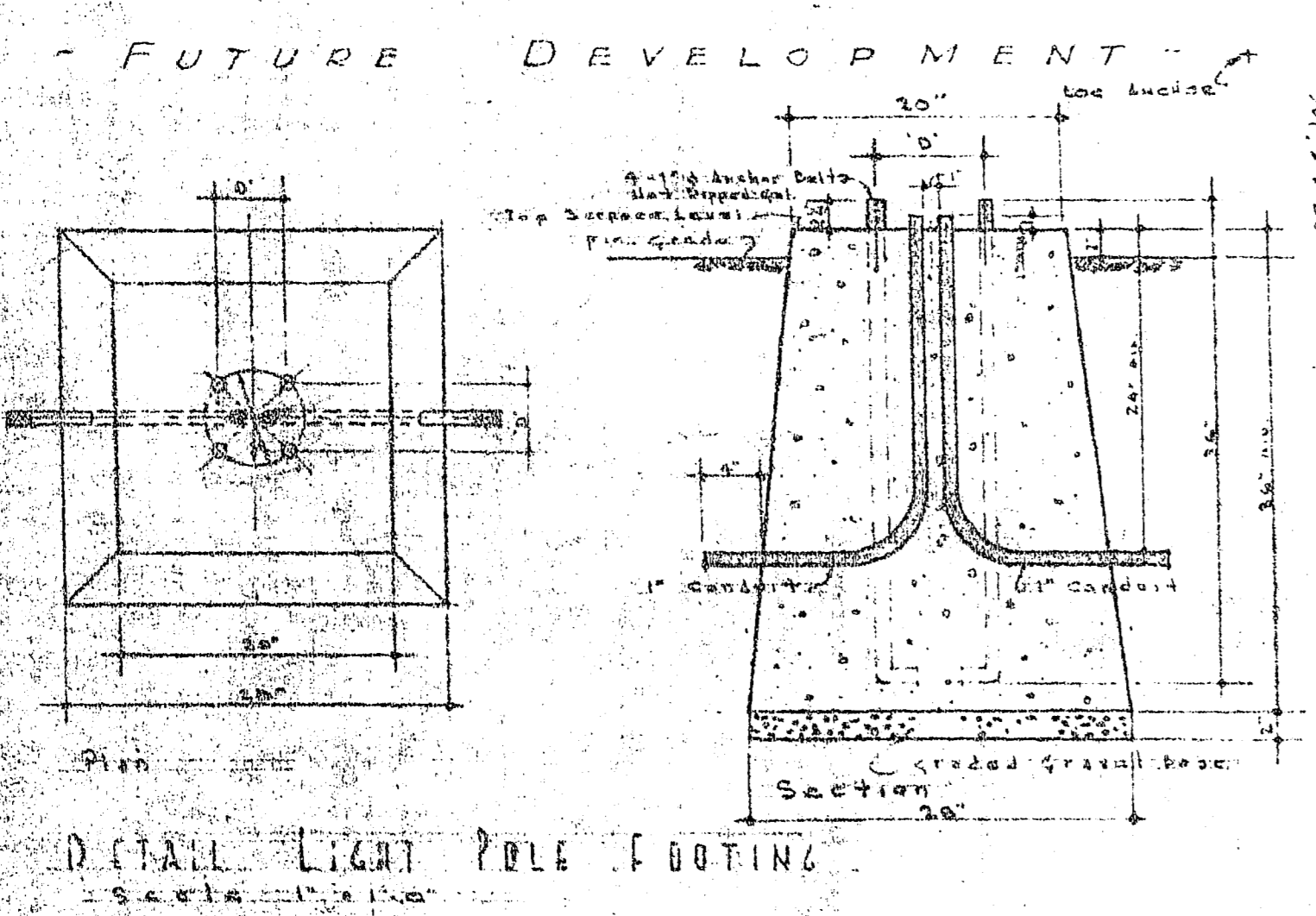
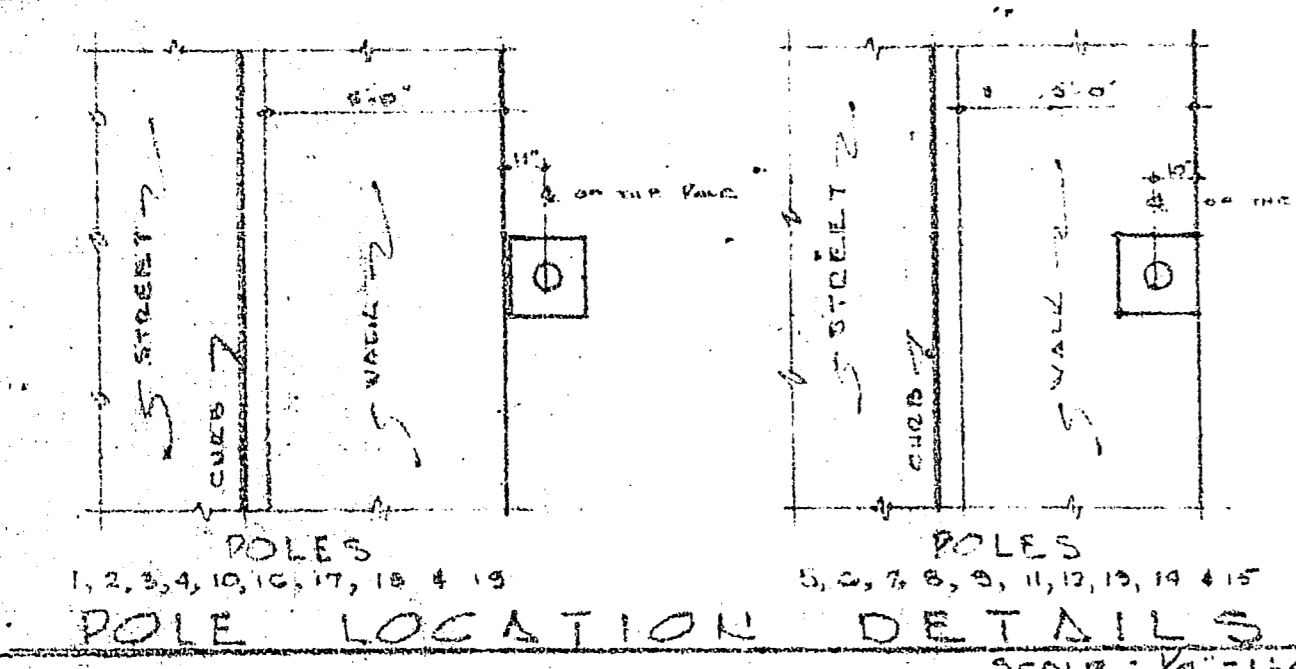
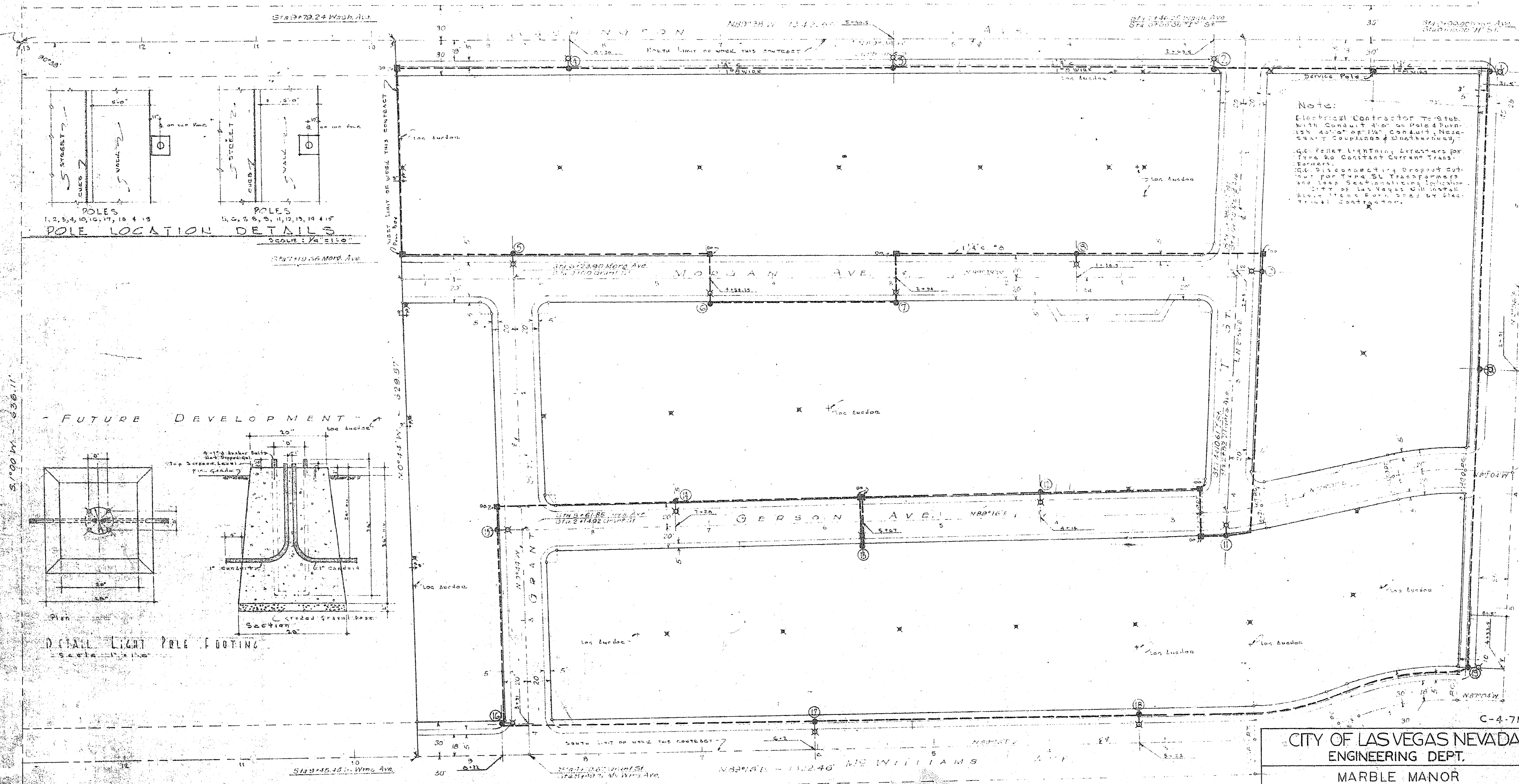
LIGHT FIXTURE	HEAD TYPE	SOCKET	PATTERN
4, 12, 15, 16, 17, 18, 19, 20, 21, 22, 23, 24, 25, 26, 27, 28, 29, 30, 31, 32, 33, 34, 35, 36, 37, 38, 39, 40, 41, 42, 43, 44, 45, 46, 47, 48, 49, 50, 51, 52, 53, 54, 55, 56, 57, 58, 59, 60, 61, 62, 63, 64, 65, 66, 67, 68, 69, 70, 71, 72, 73, 74, 75, 76, 77, 78, 79, 80, 81, 82, 83, 84, 85, 86, 87, 88, 89, 90, 91, 92, 93, 94, 95, 96, 97, 98, 99, 100	A-14	N.P. 41-VOLT D.P. INT. VOLT. MEO. BULB	A-30221C'S L.E.S. TYPE II 4 WAY A-30221C'S

**NOTES:**

1. PULL BOXES TO BE 2" x 4" (OR APPROVED EQUAL) T. & B. CAST IRON WATER PROOF FINISHED TYPE FOR 1/2" CONDUIT - SIZE C-4-71.  
 2. MAINLINE TO BE LINE MATERIAL CO. (OR APPROVED EQUAL) 1/2" POLYCARBONATE 10.0 V. BAND 4-10000 VOLT TYPE A METAL HEAD COMPLETE WITH 2500 LUMEN G.S. 6X8 LAMP & GLASS.

**~ LEGEND ~**

⊗ STEEL POLE  
 ⊠ METAL PULL BOX  
 — 5 KV WIRE IN 1/2" CONDUIT



**Note:**  
 Electrical Contractor To-Sub. With Conduit also on Pole & Furnish 40' x 40' x 1/2" Conduit, Necessary Couplings & Weatherheads.  
 40' Pole Light Fixture, Lenses per Type No Constant Current Trans. Formers.  
 100' 5/8" dia. 40' x 40' x 1/2" Dropout Cut-out for Type SL Transformers and Loop Sectionalizing Impedance Controller for Las Vegas City Install Above 11.0 kV & 13.8 kV by Electrical Contractor.

DESIGN NO.	AMOUNTING HGT. FT.	DRYLET SIZE" DIA.	LENGTH C"	STREET WIDTH
SL 1000-1A	21'-0"	8" x 4"	12'-0"	5'-0" OR LESS
SL 1000-1B	26'-0"	8" x 4"	15'-0"	37' TO 50'

**NOTE:**  
 DENOTES POWER POLE. NOT IN THIS CONTRACT. AVILITY CO. TO FURNISH AND INSTALL POWER POLES AND LOS ANCHORS.

REVISIONS	DATE	SCALE 1" = 40'
REVISED TO AS BUILT	By BGG 2-17-55	

**CITY OF LAS VEGAS NEVADA**  
**ENGINEERING DEPT.**  
**MARBLE MANOR**  
**STREET LIGHTING**

DESIGNED BY  
 DRAWN BY  
 CHECKED BY  
 APPROVED  
 CITY ENGR

FIELD BOOK NO.  
 WORK ORDER NO.  
 DRAWING NO.  
**207Y-2040-1**

**BUILT**

267-120