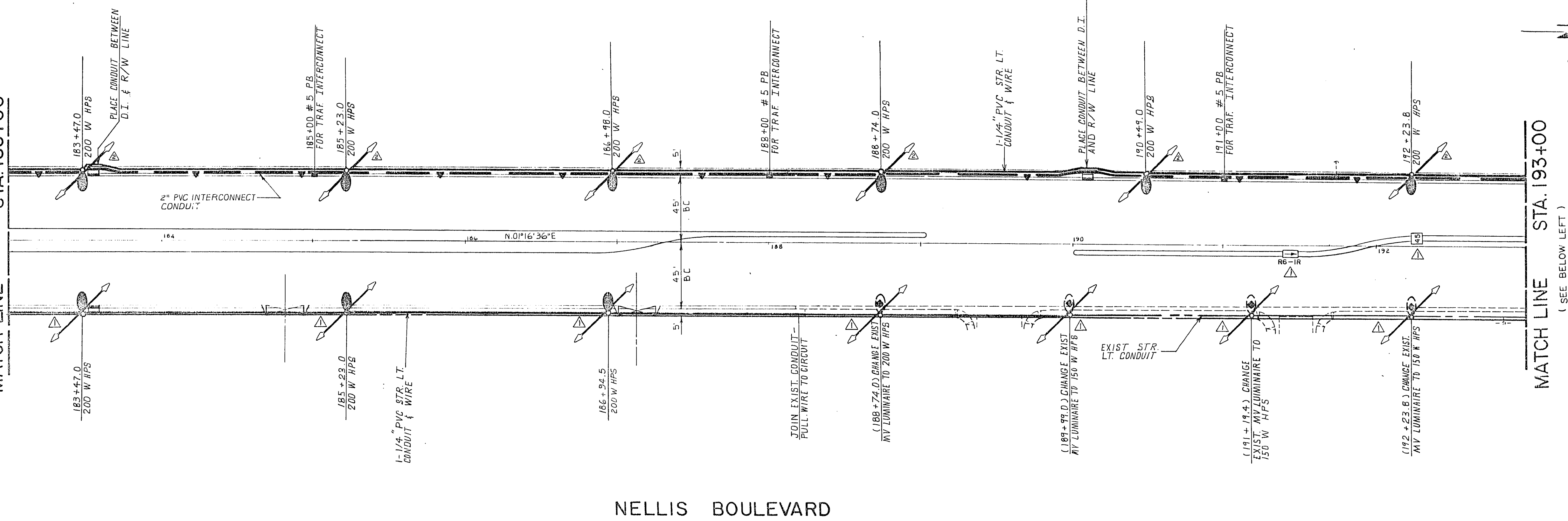


(SEE SHEET 19)
MATCH LINE
STA. 183+00

(SEE SHEET 19)

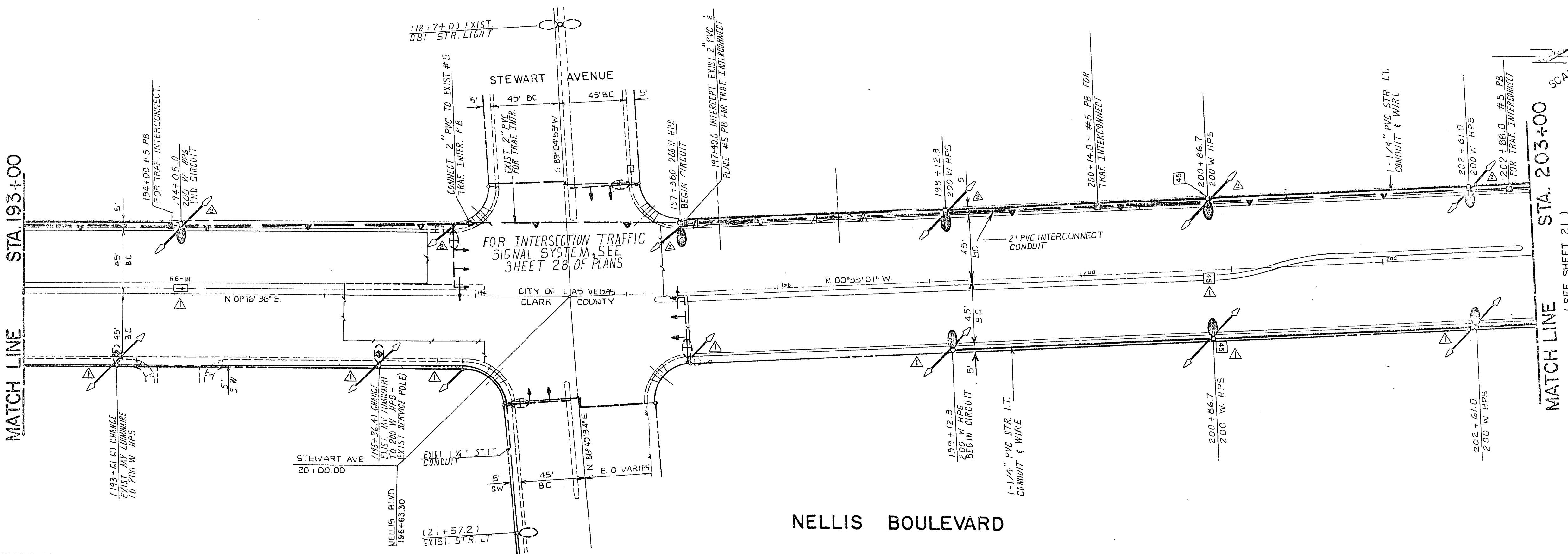


SCALE: 1" = 40'

NELLIS BOULEVARD

(SEE ABOVE RIGHT)
MATCH LINE
STA. 193+00

(SEE ABOVE RIGHT)



SCALE: 1" = 40'

NELLIS BOULEVARD

REV. NO.	DATE	DESCRIPTION
1	9-28-83	ADDITION OF TRAFFIC SIGNING BY CITY OF LAS VEGAS
2	4-28-83	ADDED STREET NAME SIGNS & TRAFFIC SIGNS

DESIGNED BY: F. MENDENHALL, T. FOSTER
 DRAWN BY: H. O'SULLIVAN, R. HENDERSON
 CHECKED BY: T. FOSTER, R. MENDENHALL

CLARK COUNTY NEVADA
 DEPARTMENT OF PUBLIC WORKS

NELLIS BOULEVARD—PHASE II
 FLAMINGO WASH TO WALNUT AVENUE
 STREET LIGHTING AND TRAFFIC INTERCONNECT PLAN

SCALE	HORIZ: 1" = 40'	DRAWING NO.
	VERT:	L-1014
PROJECT NO.	B 810232	SHT. 20 OF 42
FIELD BOOK		

107-V1800
 23-3-206