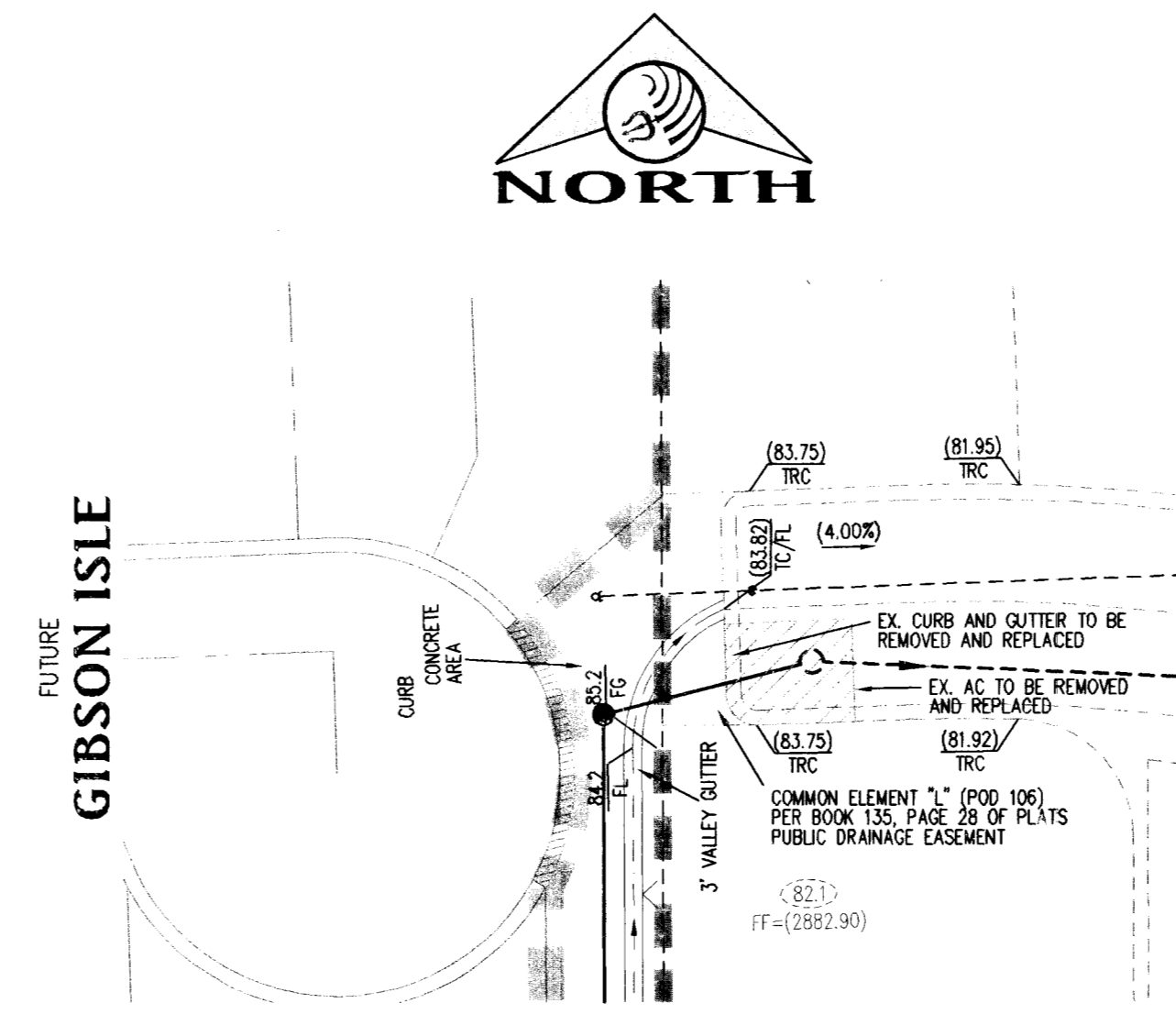
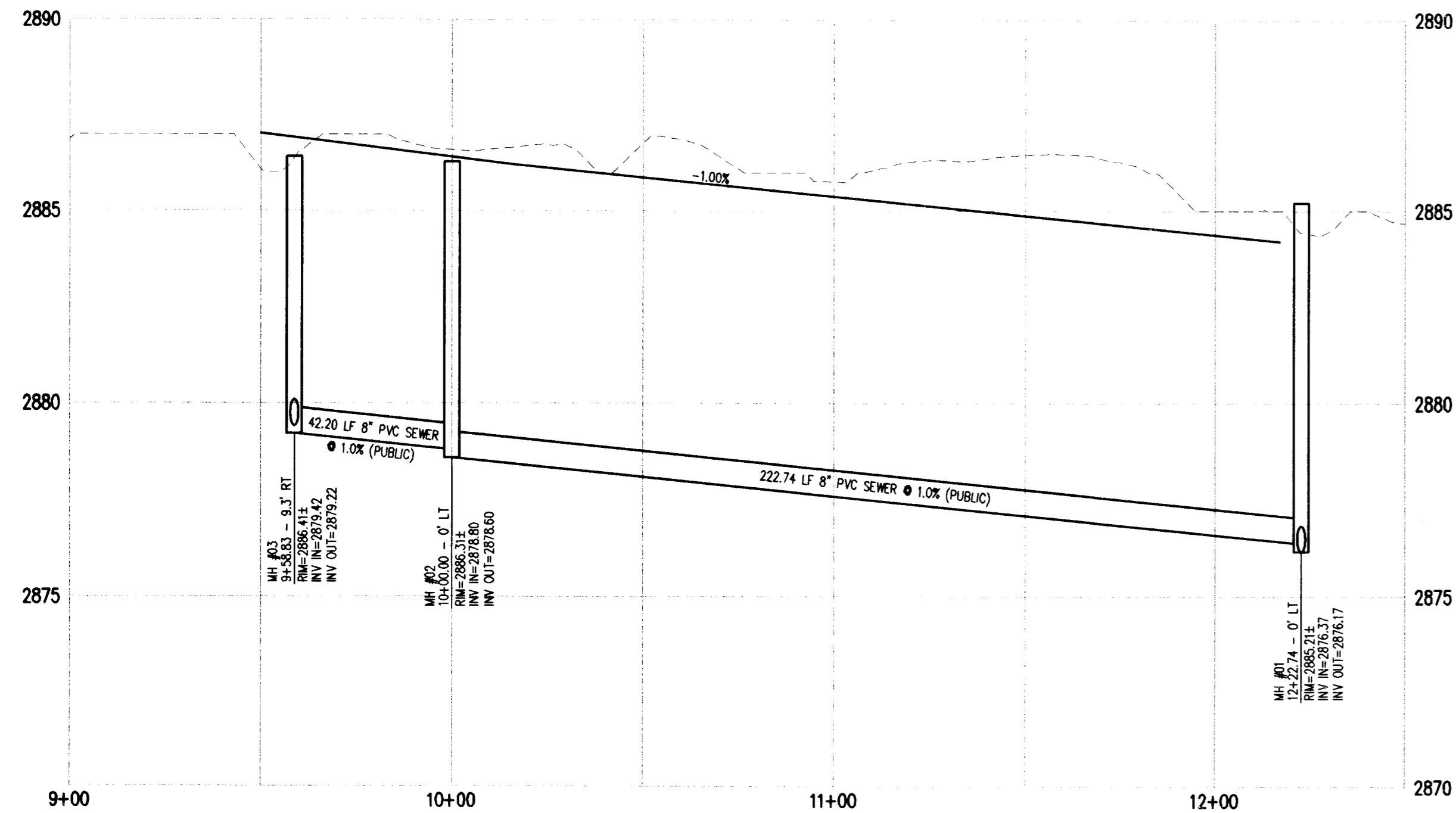
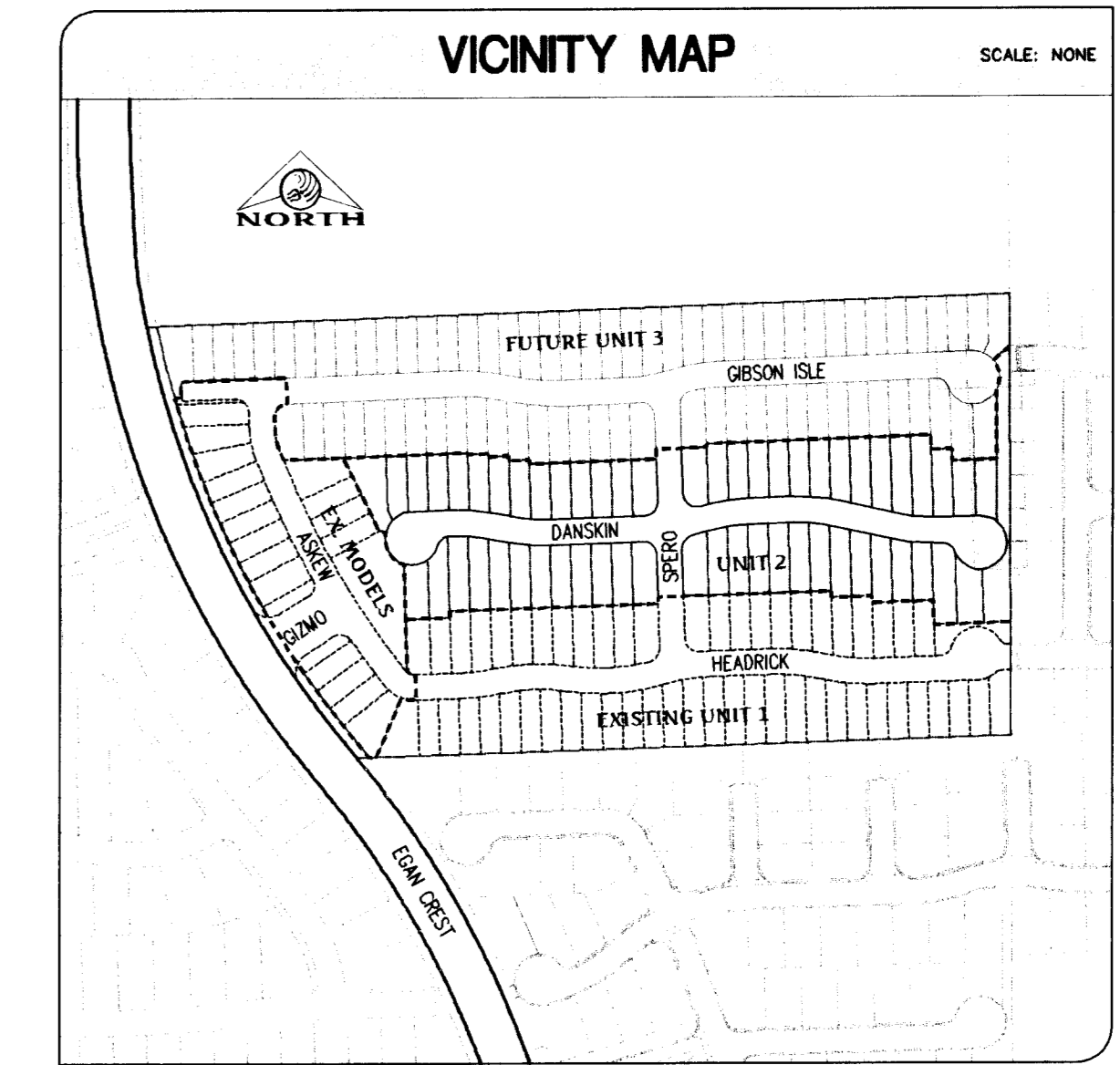


**PUBLIC DRAINAGE/PUBLIC SEWER THRU EASEMENT (PUBLIC) PLAN**

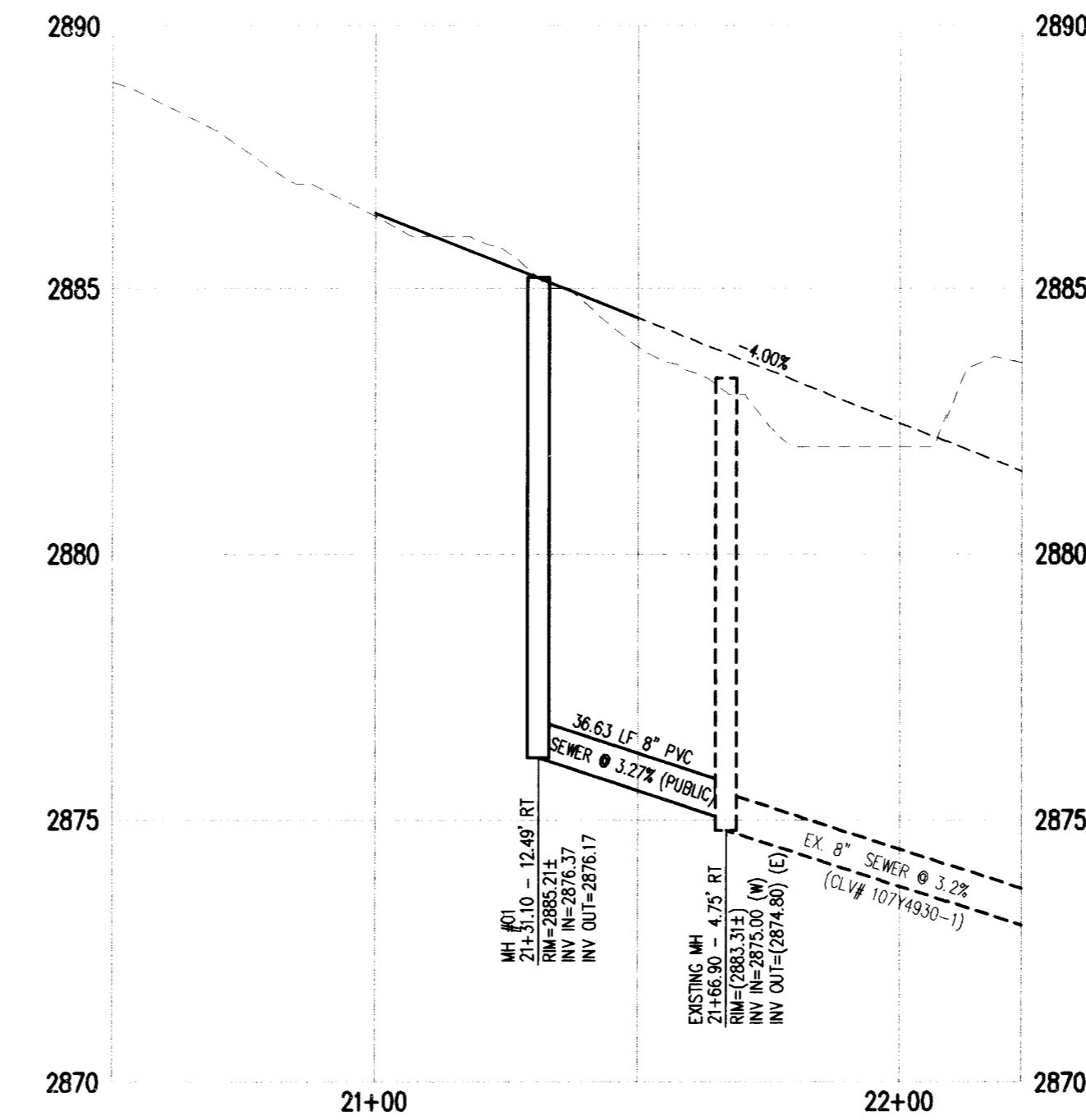


**PUBLIC DRAINAGE/PUBLIC SEWER THRU EASEMENT (PUBLIC) PLAN**



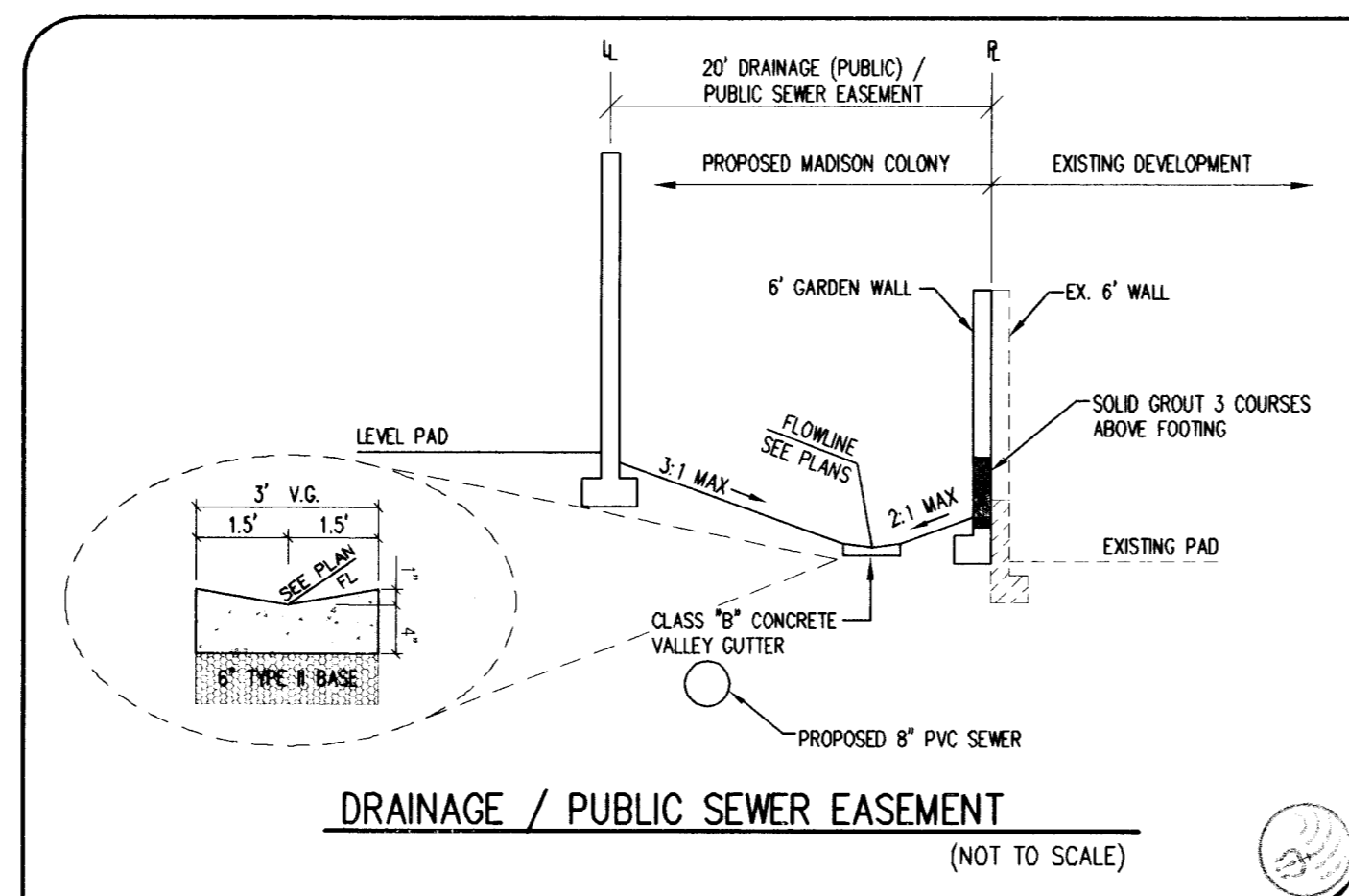
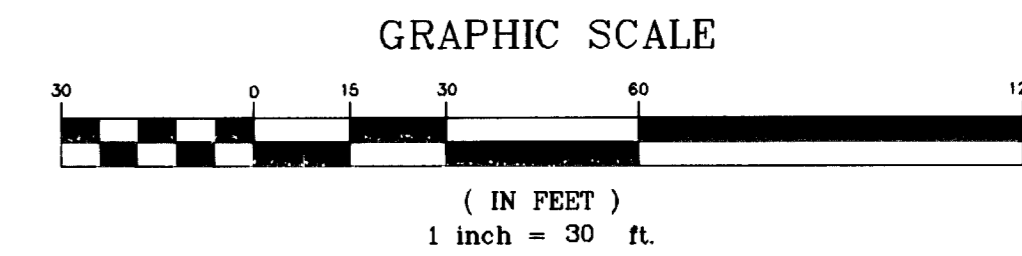
**SEWER THRU EASEMENT (PUBLIC) PROFILE**

SCALE: HORIZ. 1" = 30'  
VERT. 1" = 3'

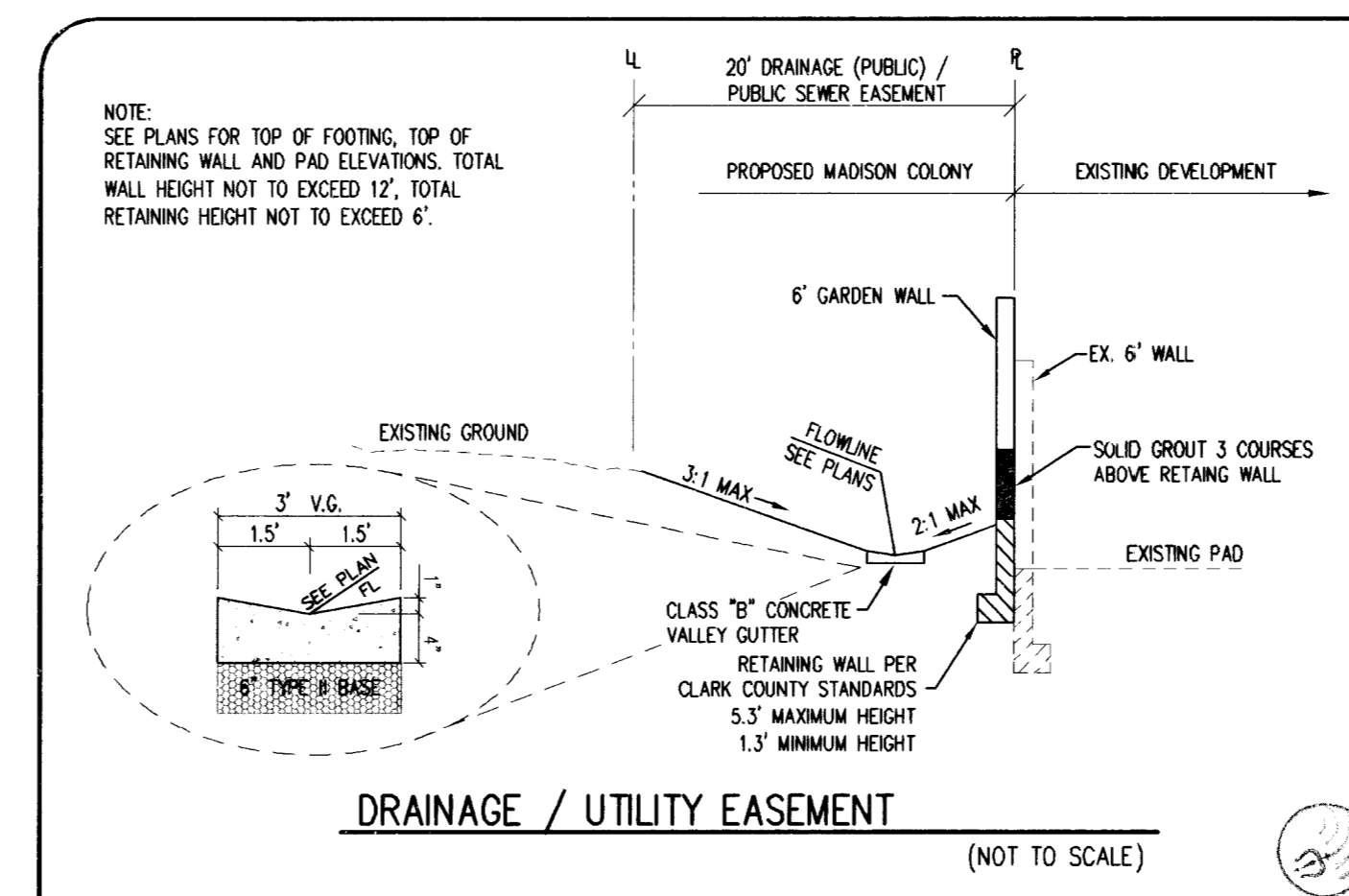


**SEWER THRU EASEMENT (PUBLIC) PROFILE**

SCALE: HORIZ. 1" = 30'  
VERT. 1" = 3'



**DRAINAGE / PUBLIC SEWER EASEMENT (NOT TO SCALE)**



**DRAINAGE / UTILITY EASEMENT (NOT TO SCALE)**

Avoid cutting underground utility lines. It's costly.  
**Call before you Dig.**  
1-800-227-2600  
UNDERGROUND SERVICE ALERT (USA)

Avoid hitting overhead power lines. It's costly.  
**Call before you do Overhead**  
1-702-227-2929

ALL PRIVATE STREETS ARE A P.U.E., PUBLIC SEWER, AND PUBLIC DRAINAGE EASEMENTS TO BE MAINTAINED BY THE HOME OWNERS ASSOCIATION.

**BENCHMARK**  
CITY OF LAS VEGAS BENCHMARK 8LV99-1385  
BEING A RIVET AND PLATE IN CONCRETE CYLINDER NW CORNER OF HUALAPAI AND ELKHORN.  
ELEVATION: 2853.03 (FEET)  
869.606 (METERS)  
BASED ON THE NORTH AMERICAN VERTICAL DATUM OF 1988 (NAVD 88).

**BASIS OF BEARING**  
THE BASIS OF BEARINGS FOR THIS SURVEY IS NORTH 00°08'16" EAST BEING THE EAST LINE OF THE NORTHWEST QUARTER (NW 1/4) OF SECTION 24, TOWNSHIP 19 SOUTH, RANGE 50 EAST, MERIDIAN CLARK COUNTY, NEVADA, AS SHOWN ON A RECORD OF SURVEY ON FILE IN THE CLARK COUNTY, NEVADA, RECORDER'S OFFICE IN FILE 123 PAGE 32.

**CONSTRUCTION NOTES**

1. ALL OFFSITE CURB RETURNS TO BE BUILT PER CLARK COUNTY STANDARDS STD DWG #228
2. CONSTRUCT ALL OFFSITE VALLEY GUTTERS PER CLARK COUNTY
3. CONSTRUCT ALL ONSITE VALLEY GUTTERS PER ROLL CURB TRANSITION DETAIL ON SHEET 5

WOODSIDE HOMES OF NEVADA  
MADISON COLONY - UNIT 2  
SEWER THRU EASEMENT PLAN AND PROFILE

DATE: MARCH 15, 2007  
DRAWN BY: J. PEARCE  
DESIGNED BY: J. PEARCE  
CHECKED BY: J. PEARCE  
JOB NO.: 024.006  
SCALE: 1" = 30'

**Triton Engineering**  
6750 W. Charleston Blvd.  
Suite B  
Las Vegas, Nevada 89146  
Office: (702) 254-1480  
Fax: (702) 254-1482  
www.tritoneng.com

PROFESSIONAL ENGINEER - STATE OF NEVADA  
JAMES M. PEARCE  
Exp. 12-31-07  
CIVIL  
No. 9552

SHEET **8** OF 12  
C.L.V. DWG # 10TY4953-2