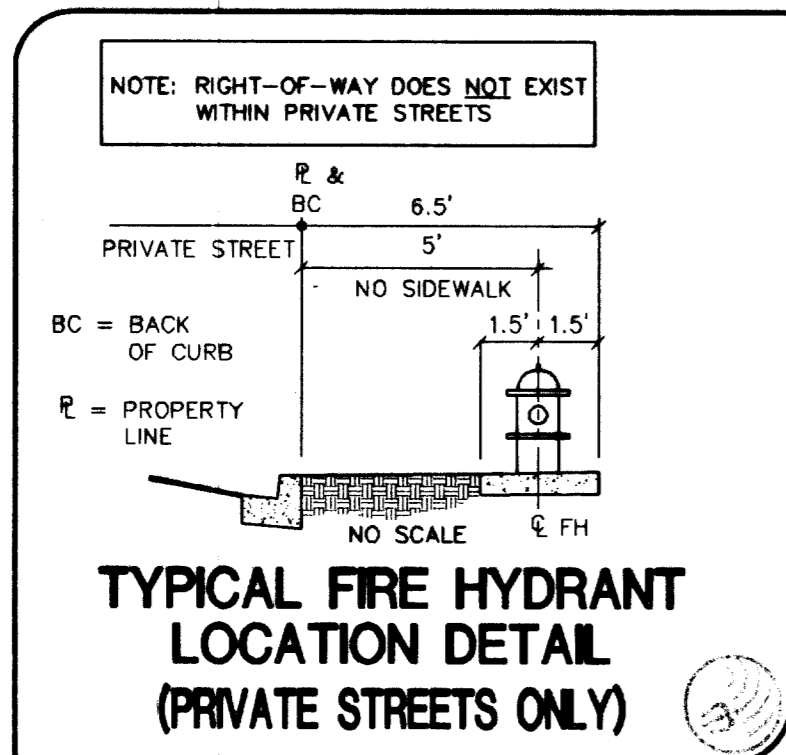


### FIRE FLOW CALCULATIONS

THE FIRE FLOW REQUIREMENT IS: 1,500 GALLONS PER MINUTE 20 PSI RESIDUAL PRESSURE.

BASED ON:  
 SQUARE FOOTAGE: 1,927 SQUARE FEET  
 LARGEST AREA BETWEEN 4-HOUR AREA SEPARATION WALLS: N/A SQUARE FEET  
 BUILDING HEIGHT: 35 FEET  
 NUMBER OF STORIES: 2 FLOORS  
 TYPE OF CONSTRUCTION: V-NON RATED  
 OCCUPANCY: RESIDENTIAL  
 FULL AUTOMATIC FIRE SPRINKLER SYSTEM: NO



### BACK WATER VALVE

BACKWATER VALVES REQUIRED PER U.P.C., LATEST EDITION, SECTION 710.0.

THE FOLLOWING LOTS REQUIRE A BWV:  
 60, 62, 63, 66, 67, 68, 69, 70, 72, 77, 78, 79, 80, 81, 82, 83, 84, 85, 86, 87, 88, 89, 90, 91, 92, 93, 94, 99, 101, 102, 103, 104, 105, 108, 109 AND 111

TOTAL LOTS REQUIRING BACKWATER VALVES = 36

### PRESSURE REDUCING VALVE

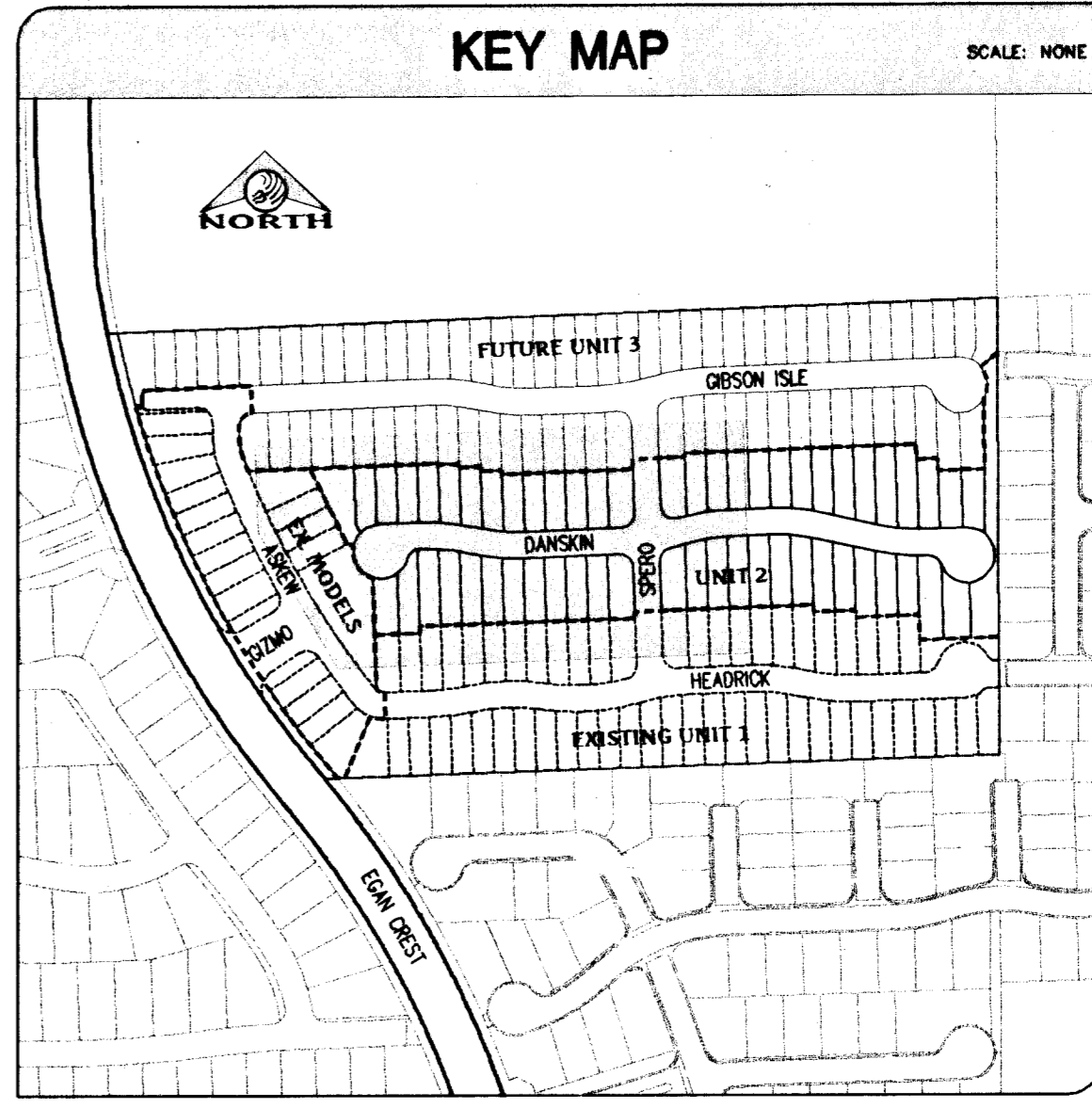
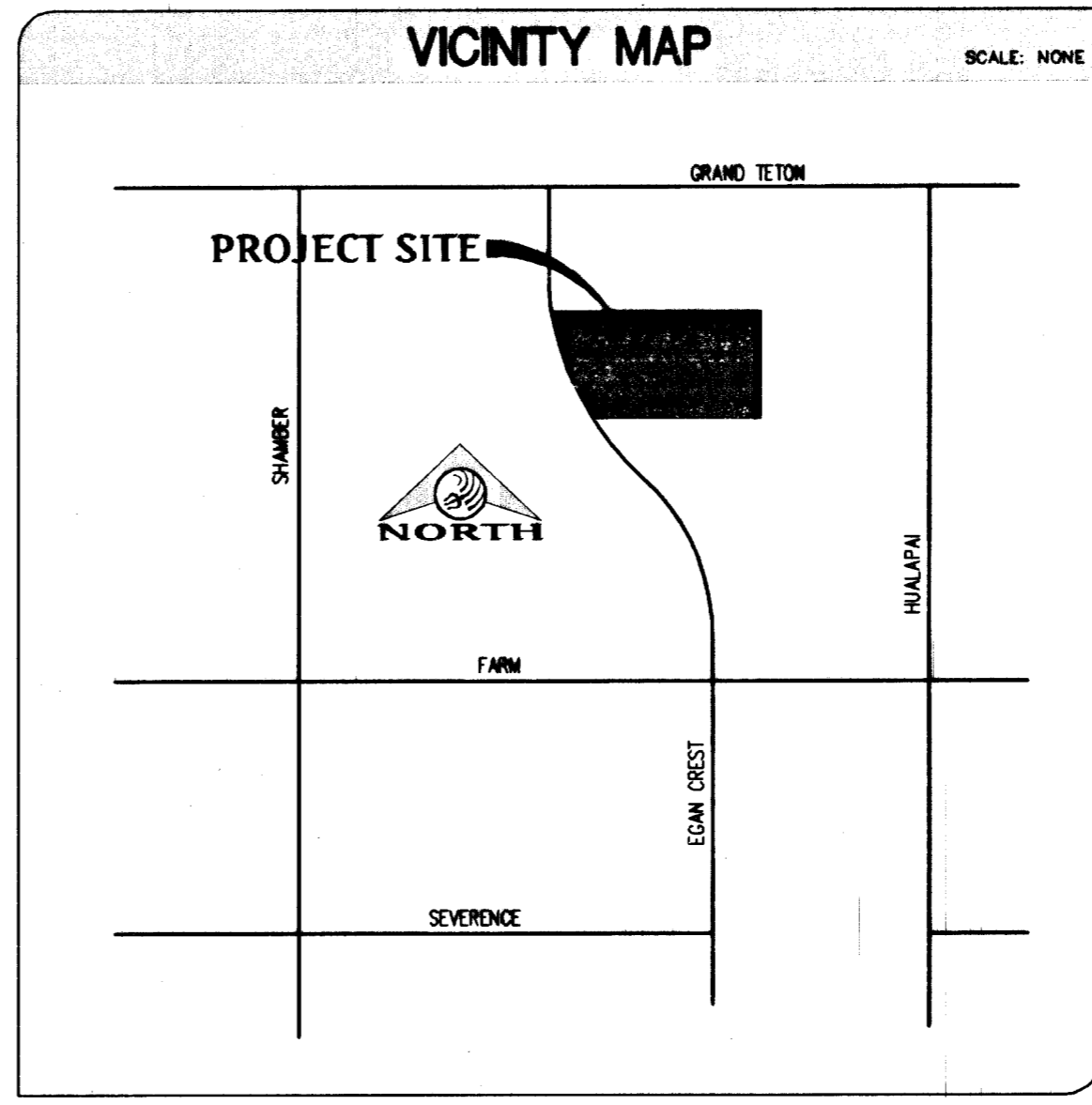
This property may have static water pressure in excess of 80 psi. The Uniform Plumbing Code requires that individual, on-site (private), pressure reducing valves be installed whenever the pressure exceeds 80 psi. PRVs are the Developer's responsibility and will not be expected or included in the acceptance of LVWD facilities.

LOTS WITHIN 3000 ZONE WITH A FINISH FLOOR ELEVATION LESS THAN 2905.4 WILL REQUIRE A PRV (LOTS 71 - 100 WILL REQUIRE PRVS)

### SEWER MANHOLE SCHEDULE

MH #	TOP OF MH ELEVATION	INVERT OUT/THRU ELEVATION	INVERT IN ELEVATION	NORTHING	EASTING
1	2884.21±	2876.17	2876.37	26818422.1280	734713.8340
2	2886.41±	2878.60	2878.80	26818199.3940	734716.1761
3	2886.41±	2879.22	2979.42	26818156.1735	734706.1469
4	2896.71±	2889.82	2890.02	26818208.9092	734385.1315
5	2899.01±	2892.29	2892.49	26818206.4089	734314.2006
6	2902.41±	2895.84	2896.04	26818182.7966	734212.0779
7	2910.71±	2903.63	2903.83	26818174.4418	733975.0632
8	2916.91±	2910.12	2910.32	26818190.8047	733871.5314
9	2920.71±	2915.60	N/A	26818170.9724	733785.7569

ALL MANHOLES TO BE 561



### UTILITY NOTES

FIRE, WATER AND SEWER SERVICES, AS APPROVED ON THIS PLAN, ARE INTENDED SPECIFICALLY FOR THE LOT AND USE SHOWN AND ARE NOT INTENDED TO SERVE ADDITIONAL PARCELS OR STRUCTURES WHICH MAY BE CREATED IN THE FUTURE. IN THE EVENT THAT THE PARCELS AND/OR LOTS SHOWN ON THIS PLAN ARE FURTHER DIVIDED TO CREATE ADDITIONAL PARCELS OR LOTS, THE OWNER IS REQUIRED TO PROVIDE SEPARATE FIRE, WATER AND SEWER SERVICES TO EACH.

ALL WATER FACILITIES CONSTRUCTION SHALL BE IN ACCORDANCE WITH THE "UNIFORM DESIGN AND CONSTRUCTION STANDARDS FOR WATER DISTRIBUTION SYSTEMS" (UDACS), LATEST EDITION.

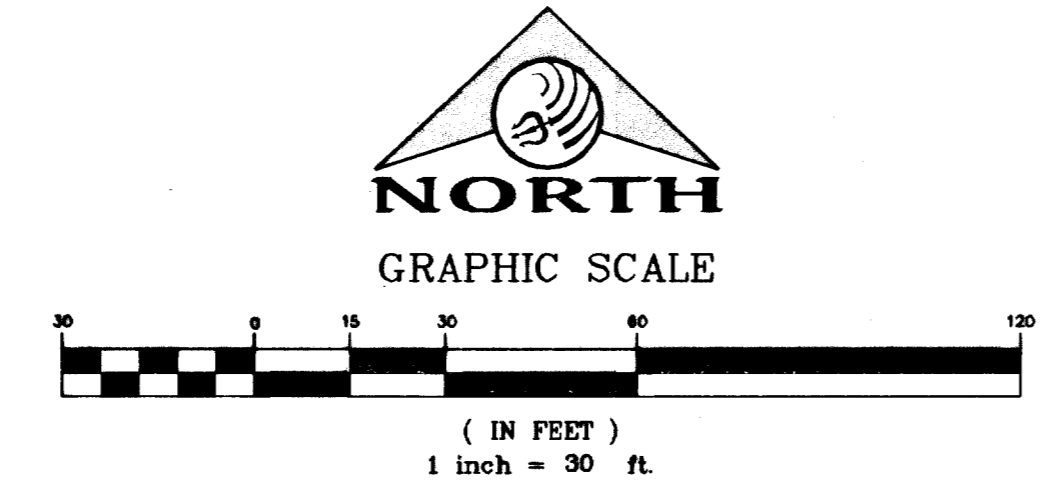
IF THE PROJECT OVERLAYS AN AREA INVOLVING SNWS FACILITIES, THE DEVELOPER'S ENGINEER SHALL SUBMIT THE PLANS TO SNWS FOR THEIR REVIEW PARALLEL WITH THE AGENCY'S REVIEW. SNWS APPROVAL MUST BE OBTAINED PRIOR TO AGENCY WATER PLAN APPROVAL. THE SNWS MAY BE CONTACTED BY TELEPHONE AT (702) 486-6741, BY FAX AT 486-6742, OR BY MAIL AT 243 LAKE SHORE ROAD, BOULDER CITY, NEVADA, 89005.

Avoid cutting underground utility lines. It's costly.

Avoid hitting overhead power lines. It's costly.

**Call before you "311" Dig.**  
 1-800-227-2600  
 UNDERGROUND SERVICE ALERT (USA)

**Call before you do Overhead**  
 1-702-227-2929



### BENCHMARK

CITY OF LAS VEGAS BENCHMARK BLV99-135E5 BEING A RIVET AND PLATE IN CONCRETE CYLINDER NW CORNER OF HUALAPAI AND ELKHORN.

ELEVATION: 2853.03 (FEET)  
 869.606 (METERS)

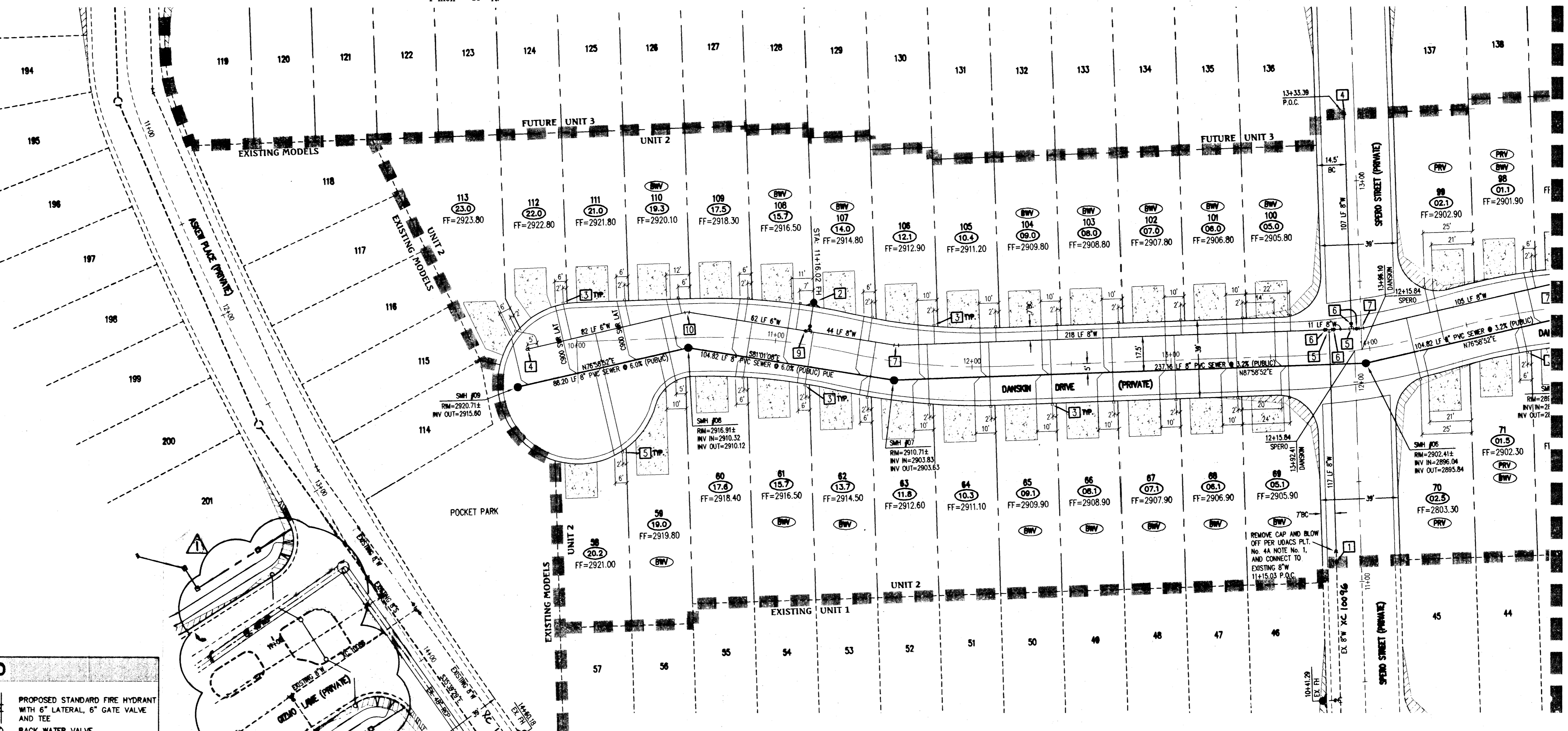
BASED ON THE NORTH AMERICAN VERTICAL DATUM OF 1988 (NAVD 88).

### BASIS OF BEARING

THE BASIS OF BEARINGS FOR THIS SURVEY IS NORTH 00°00'16" EAST BEING THE EAST LINE OF THE NORTHEAST QUARTER (NW 1/4) OF SECTION 24, TOWNSHIP 19 SOUTH, RANGE 59 EAST, M.D.M. CLARK COUNTY, NEVADA, AS SHOWN ON A RECORD OF SURVEY ON FILE IN THE CLARK COUNTY, NEVADA, RECORDER'S OFFICE IN FILE 123 PAGE 32.

- ### FITTINGS LEGEND
- 1 EXISTING 6" GATE VALVE TO BE CLOSED PRIOR TO CONNECTION WITH EX 6" W
  - 2 FIRE HYDRANT ASSY. (INCLUDING 6" LATERAL, 6" GATE VALVE AND 60W TEE) PER UDACS PLATE 7
  - 3 3/4" DOMESTIC METER PER UDACS PLATE 1B
  - 4 CAP & 2" BLOW-OFF ASSEMBLY PER UDACS PLATE 4A
  - 5 6" x 6" TEE
  - 6 6" GATE VALVE
  - 7 6" 11.25' BEND
  - 8 6" 22.5' BEND
  - 9 6" x 6" REDUCER
  - 10 6" 22.5' BEND

- ### UTILITY LEGEND
- EX GAS EXISTING GAS
  - EX 10"S EXISTING SEWER MAIN
  - 6"S PROPOSED SEWER MAIN
  - 6"W PROPOSED SEWER LATERAL
  - EX 8"W EXISTING WATER MAIN
  - 8"W PROPOSED WATER MAIN
  - PROPOSED WATER LATERAL WITH 3/4" METER
  - EXISTING UTILITY MANHOLE
  - PROPOSED UTILITY MANHOLE
  - EXISTING VALVE
  - PROPOSED VALVE
  - PROPOSED REDUCER
  - PROPOSED STANDARD FIRE HYDRANT WITH 6" LATERAL, 6" GATE VALVE AND TEE
  - BACK WATER VALVE SEC DETAIL, SHEET 16
  - PRESSURE REDUCING VALVE
  - EXISTING 100W STREET LIGHT
  - PROPOSED 100W HPS STREET LIGHT
  - EXISTING 250W STREET LIGHT
  - PROPOSED 250W HPS STREET LIGHT
  - PROPOSED CONCRETE DRIVEWAY



**DRIVEWAY NOTE:**  
 ALL DRIVEWAYS SHOWN ARE FOR ILLUSTRATION PURPOSES ONLY. EXACT DRIVEWAY LOCATIONS DEPEND UPON HOUSE MODEL. SEE PLOT PLANS FOR MODEL AND DRIVEWAY LOCATION. ALL METER BOXES SHALL BE LOCATED OUTSIDE OF DRIVEWAY AREAS.

**PROJECTED SEWER FLOWS**

PEAK = 0.0473 MILLION GALLONS PER DAY  
 AVERAGE DAILY = 0.0135 MILLION GALLONS PER DAY

**FIRE DEPT APPROVAL**

APPROVAL BY THE FIRE DEPARTMENT HAVING JURISDICTION IS REQUIRED PRIOR TO OBTAINING FINAL APPROVAL FROM THE LVWD.

**APPROVALS**

CITY FIRE DEPARTMENT: [Signature] DATE: 9.27.07

LAS VEGAS VALLEY WATER DISTRICT: [Signature] DATE: 9.28.07

NOTE: THE PROJECT PLAN APPROVAL CONTINGENT ON PROJECT 113915 MADISON COLONY - UNIT 1 PLAN APPROVAL.

NOTE: INSTALL PIPELINE MARKER BALLS IN TRENCH ABOVE EACH HORIZONTAL ELBOW FITTING, PER UDACS PLATE NO. 27.

SEE SHEET 10

DATE: MARCH 15, 2007
DESIGNED BY: J. PERRE
CHECKED BY: [Signature]
SCALE: 1" = 30'
NO. 114661
DESCRIPTION: REVISED ENTRY ISLAND AND SIDE WALK

**Triton Engineering**

6957 W. Charleston Blvd.  
 Las Vegas, Nevada 89146

Office: (702) 254-1480  
 Fax: (702) 254-9662  
 www.tritoneng.com

WOODSIDE HOMES OF NEVADA  
 MADISON COLONY - UNIT 2  
 UTILITY PLAN 1

PROFESSIONAL ENGINEER - STATE OF NEVADA  
 JAMES M. PEARCE  
 Exp. 12-31-07  
 CIVIL  
 No. 9552

SHEET 9 OF 12  
 C.L.V. DWG.# 1074963-2