

DISCLAIMER NOTE

UTILITY LOCATIONS SHOWN HEREON ARE APPROXIMATE ONLY. IT SHALL BE THE CONTRACTOR'S RESPONSIBILITY TO DETERMINE THE EXACT HORIZONTAL AND VERTICAL LOCATION OF ALL EXISTING UNDERGROUND AND OVERHEAD UTILITIES PRIOR TO COMMENCING CONSTRUCTION. NO REPRESENTATION IS MADE THAT ALL EXISTING UTILITIES ARE SHOWN HEREON. THE ENGINEER ASSUMES NO RESPONSIBILITY FOR UTILITIES NOT SHOWN OR UTILITIES NOT SHOWN IN THEIR PROPER LOCATION.

Avoid cutting underground utility lines. It's costly.
Call before you Dig
1-800-227-2600
UNDERGROUND SERVICE (USA)

Avoid overhead power line contact
Call before you OVERHEAD
1-702-227-2929
NEVADA POWER ENVIRONMENT AND SAFETY SERVICES DEPARTMENT



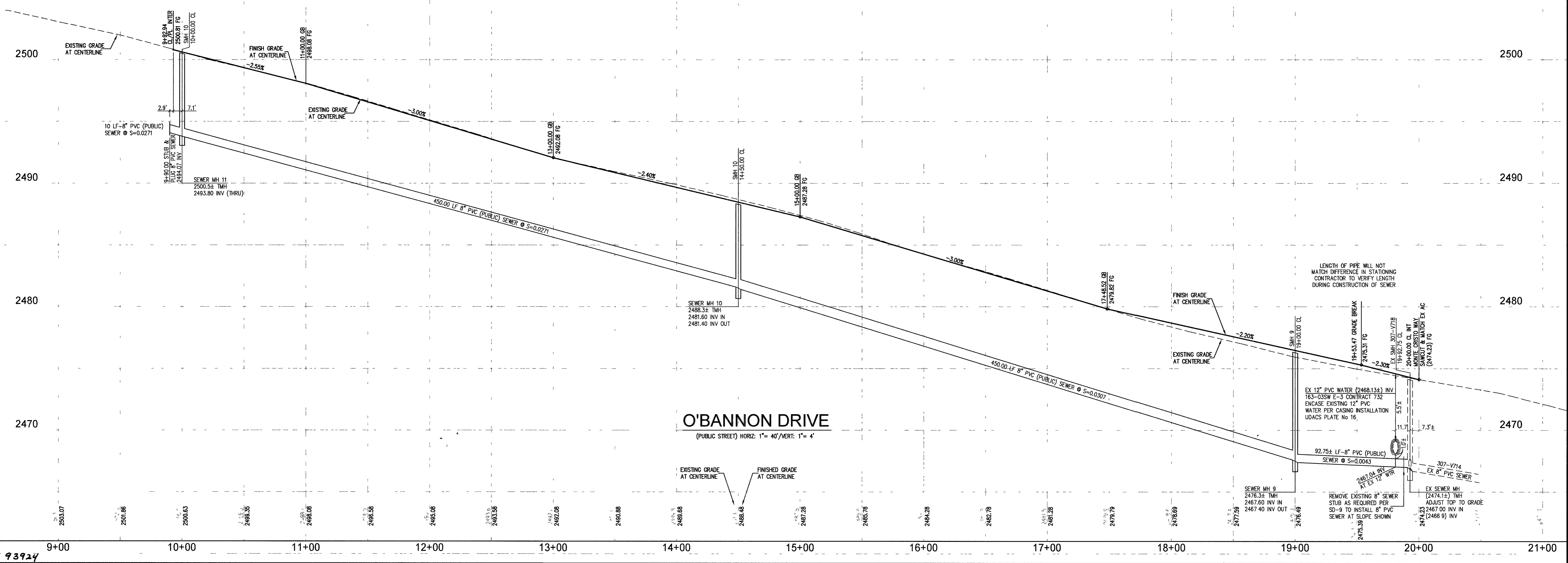
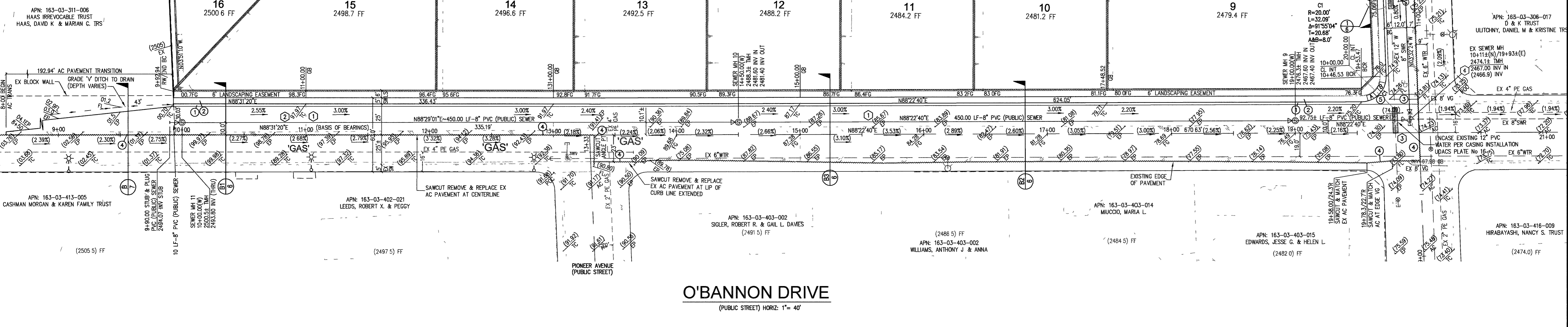
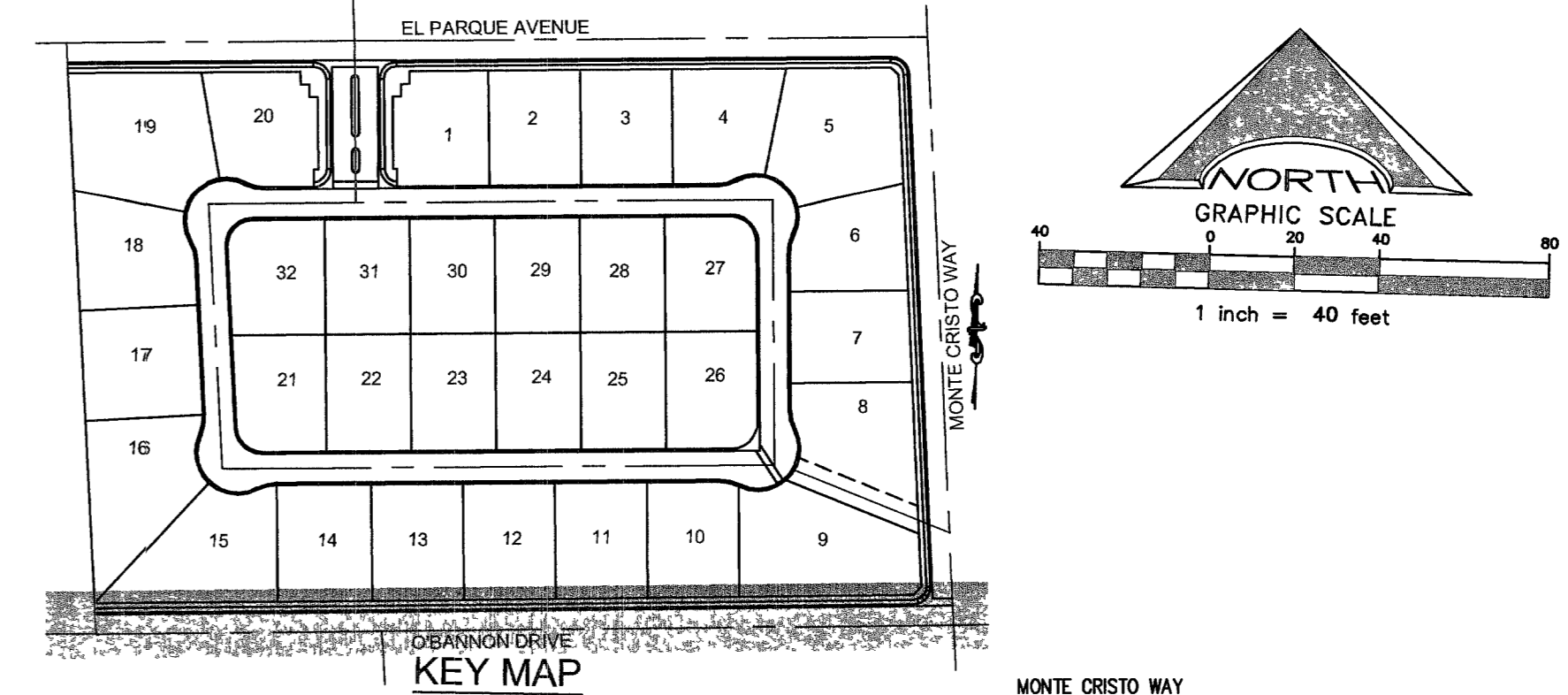
!! DANGER !!
HIGH PRESSURE GAS MAIN
GAS DATA SHOWN HEREON IS APPROXIMATE ONLY. CONTRACTOR IS REQUIRED TO VERIFY LINE LOCATIONS PRIOR TO COMMENCING ANY CONSTRUCTION ACTIVITIES WITHIN MONTE CRISTO WAY.
CONTRACTOR IS ALSO REQUIRED TO PROVIDE ENGINEER AND SOUTHWEST GAS CORPORATION WITH 48-HOUR PRIOR NOTICE OF INTENT TO COMMENCE ANY EXCAVATION OPERATIONS ABOVE OR BELOW GAS MAINS.
CALL BEFORE YOU DIG
USA UNDERGROUND 1-800-227-2600
SOUTHWEST GAS (702) 365-1100
L. R. NELSON (702) 788-7978

- CONSTRUCTION NOTES**
- CONSTRUCT 1' TYPE CURB & GUTTER PER CCAUSD No 216
 - CONSTRUCT 5' WIDE CONCRETE SIDEWALK PER CCAUSD No 234
 - CONSTRUCT 8' WIDE VALLEY GUTTER PER CCAUSD No 228
 - SAWOUT, REMOVE & REPLACE EXISTING AC PAVEMENT
 - CONSTRUCT SIDEWALK RAMPS USING ARMOR TILE TRUNCATED DOMES OR EQUIVALENT PER CCAUSD No 235, CASE 1

- SEWER NOTES**
- 48" MANHOLE (SD-1)
 - 8" PVC SEWER
 - ENCASE EXISTING 12" PVC WATER PER CASING INSTALLATION PER UDACS PLATE No 16
 - RECONSTRUCT EX SEWER MANHOLE AS REQUIRED PER SD-9 TO INSTALL 8" PVC SEWER

BENCH MARK
CITY OF LAS VEGAS BENCHMARK 11V10 356
A RIVET AND PLATE IN THE TOP OF CURB AT THE SOUTHWEST CORNER OF TENAYA WAY AND O'BANNON DRIVE.
ELEVATION = 2459.84 SURVEY FEET = 749.7604 METERS (NAVD88)

BASIS OF BEARING
NORTH 88°31'20" EAST, BEING THE BEARING OF THE SOUTH LINE OF THE SOUTHEAST QUARTER (SE 1/4) OF THE NORTHWEST QUARTER (NW 1/4) OF THE SOUTHWEST QUARTER (SW 1/4) OF SECTION 3, TOWNSHIP 21 SOUTH, RANGE 60 EAST, M.D.M., AS SHOWN ON A MAP ON FILE IN THE CLARK COUNTY, NEVADA RECORDER'S OFFICE AS BOOK 36, PAGE 57 OF PLATS.



| | |
|---|---|
| <p>PLASIM HOMES, LLC 720 SOUTH FOURTH STREET, SUITE 200 LAS VEGAS, NEVADA 89101 (702) 3825212</p> | <p>L. R. NELSON CONSULTING ENGINEERS, INC. 6765 West Russell Road Suite 200 Las Vegas, Nevada 89118 (702) 798-7978 (702) 451-2286 FAX</p> |
| <p>PROFILES O'BANNON DRIVE</p> | <p>TITLE MONTE CRISTO / O'BANNON</p> |
| <p>DRAWN BY: RJR</p> | <p>DESIGNED BY: RJR</p> |
| <p>CHECKED BY: CJR</p> | <p>PROJECT NO.: 1364-001-041</p> |
| <p>SCALE: 1" = 40' 1" = 4'</p> | <p>SHEET P3 12 OF 15 SHEETS DRAWING NO. 107Y 4435</p> |