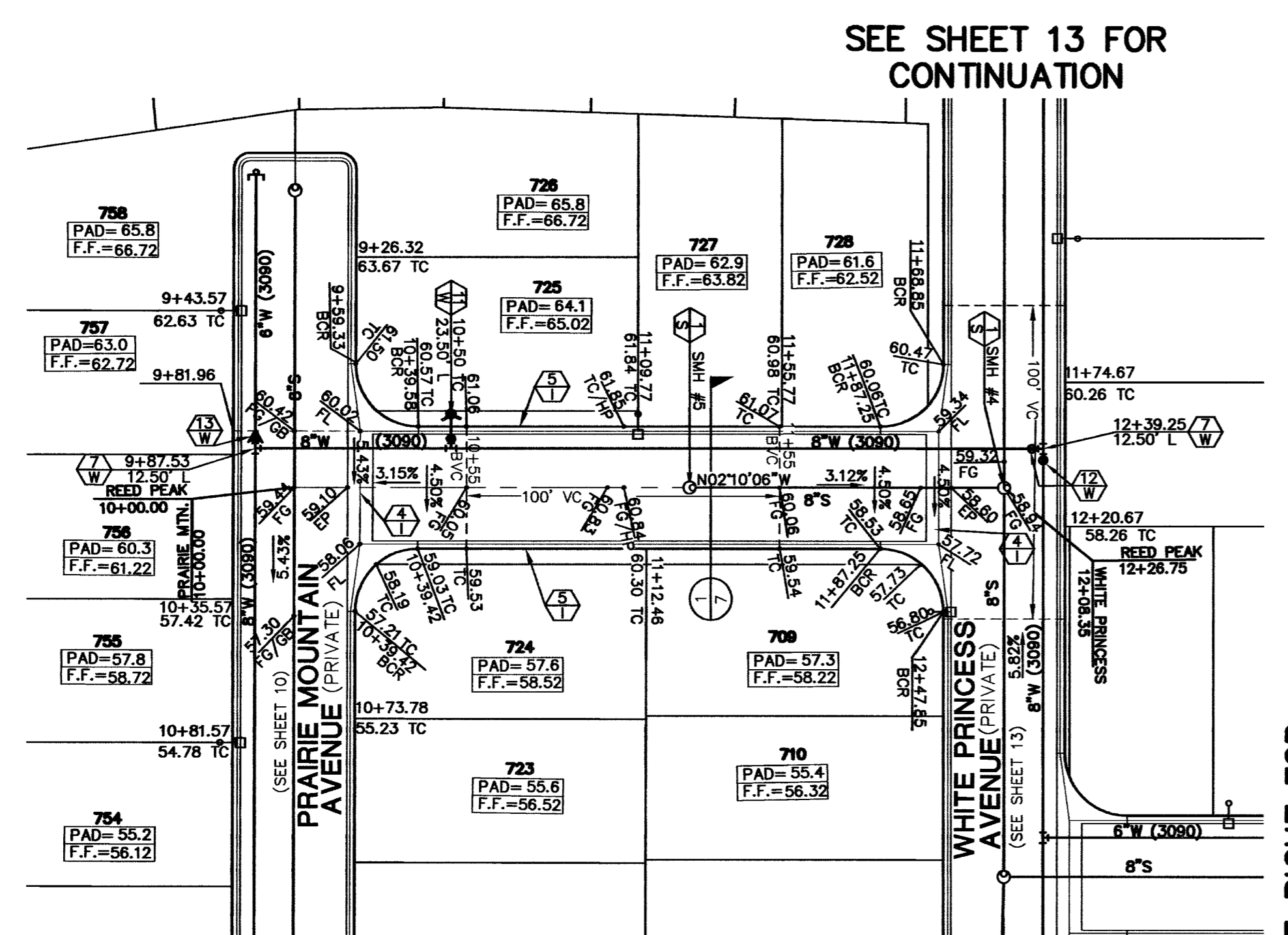
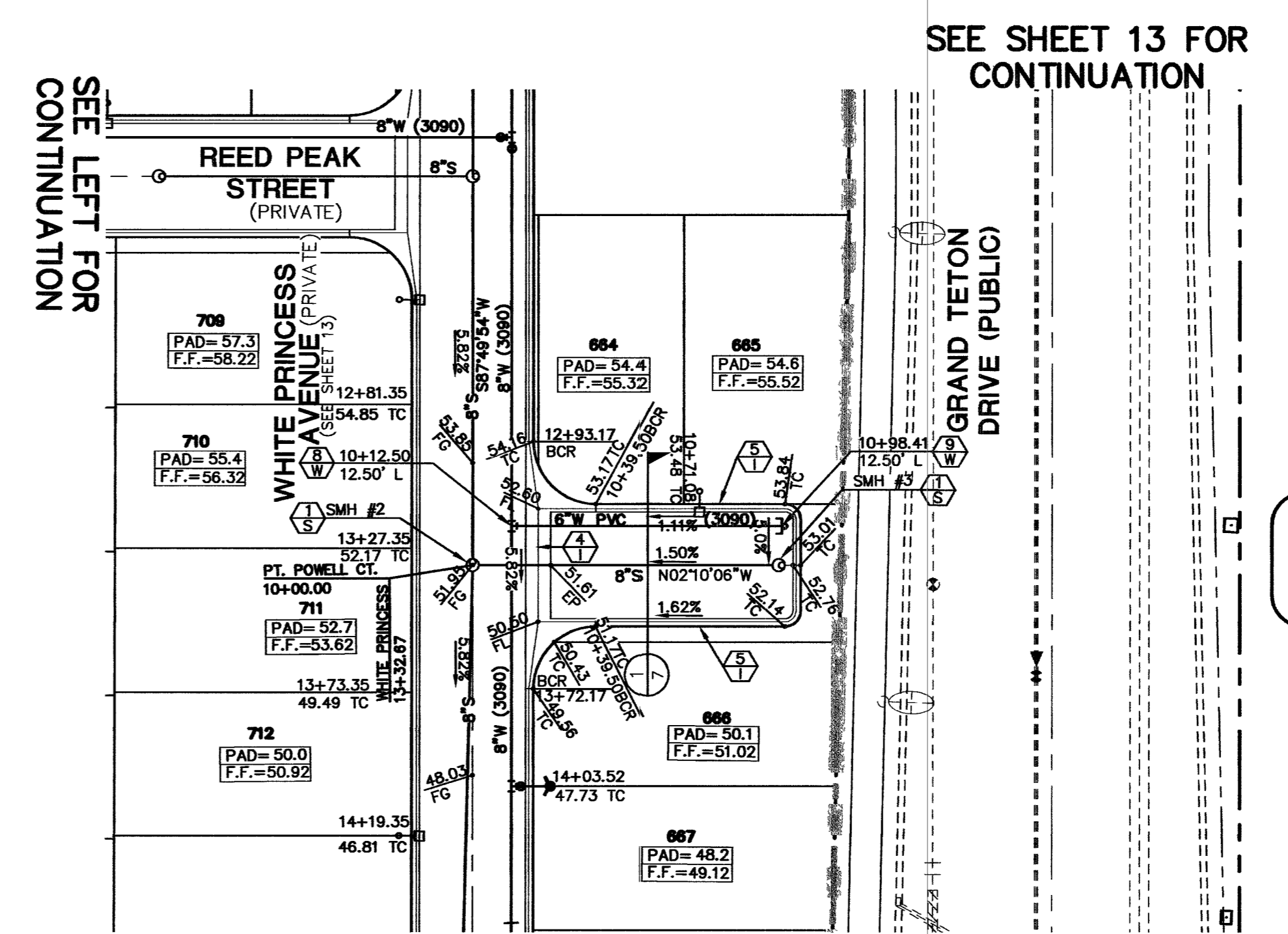


DATE: 3/10/06

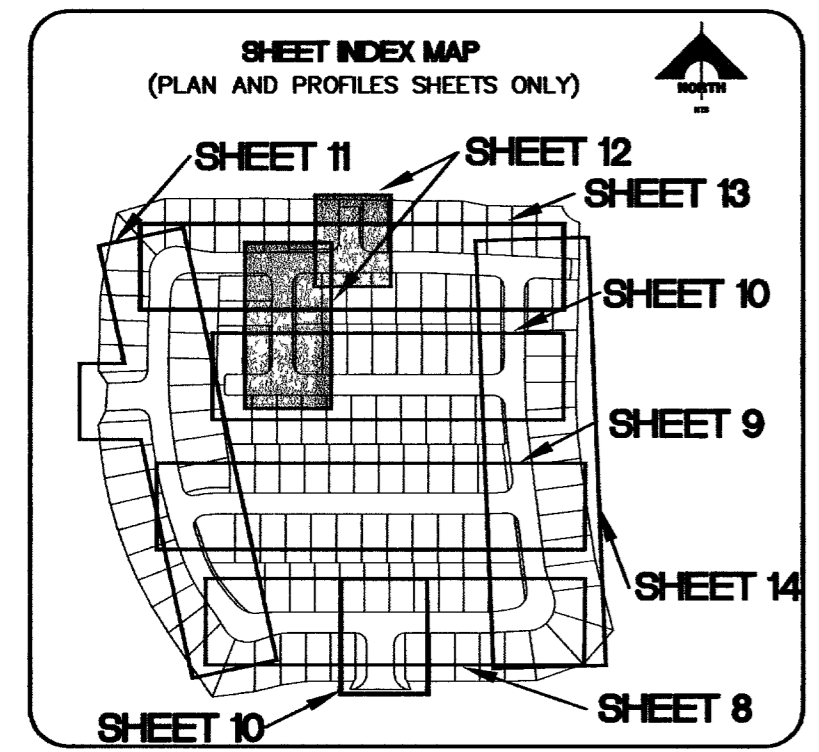


SEE SHEET 10 FOR CONTINUATION
REED PEAK STREET (PRIVATE)
SEE SHEET 13 FOR CONTINUATION



SEE SHEET 13 FOR CONTINUATION
POINT POWELL COURT (PRIVATE)
SEE SHEET 13 FOR CONTINUATION

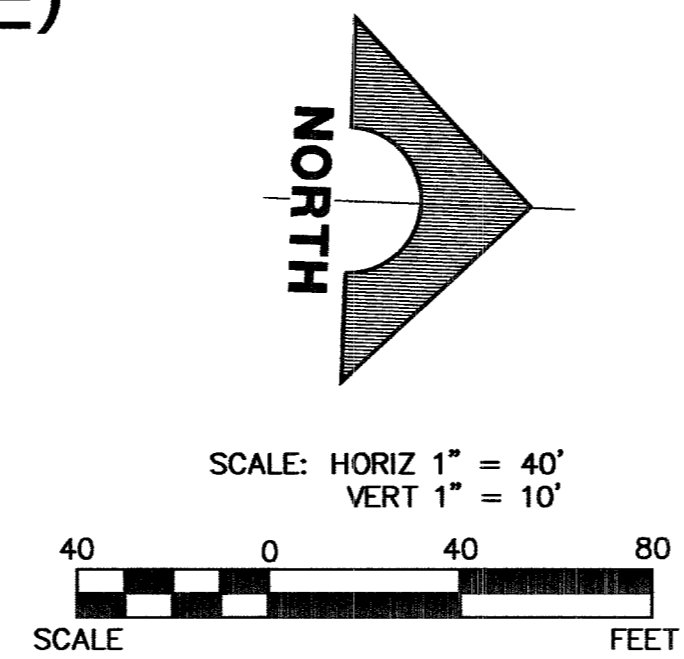
FOR EX. GRAND TETON IMP'S, SEE
CLIFFS EDGE / PROVIDENCE
GRAND TETON DRIVE
PULI ROAD TO HUALAPAI WAY
BY VTN, CLV #107Y-4816-GT
107Y-4816-05-8



BASIS OF BEARINGS
N 88°21'18" E BEING THE SOUTH LINE OF THE SOUTHWEST QUARTER (SW 1/4) OF THE NORTHEAST QUARTER (NE 1/4) OF SECTION 13, T19S, R59E, M.D.M., AS SHOWN BY RECORD OF SURVEY ON FILE IN THE CLARK COUNTY, NEVADA RECORDER'S OFFICE IN FILE 124 OF SURVEYS AT PAGE 94.

BENCHMARK

DESC.	NAVD 88 DATUM	NAVD 89 DATUM
BLV99 13E4 RIVET AND PLATE IN CONCRETE CYLINDER AT THE NORTHWEST CORNER OF HUALAPAI WAY AND FARM ROAD.	2860.79 (FEET)	871.971 (METERS)



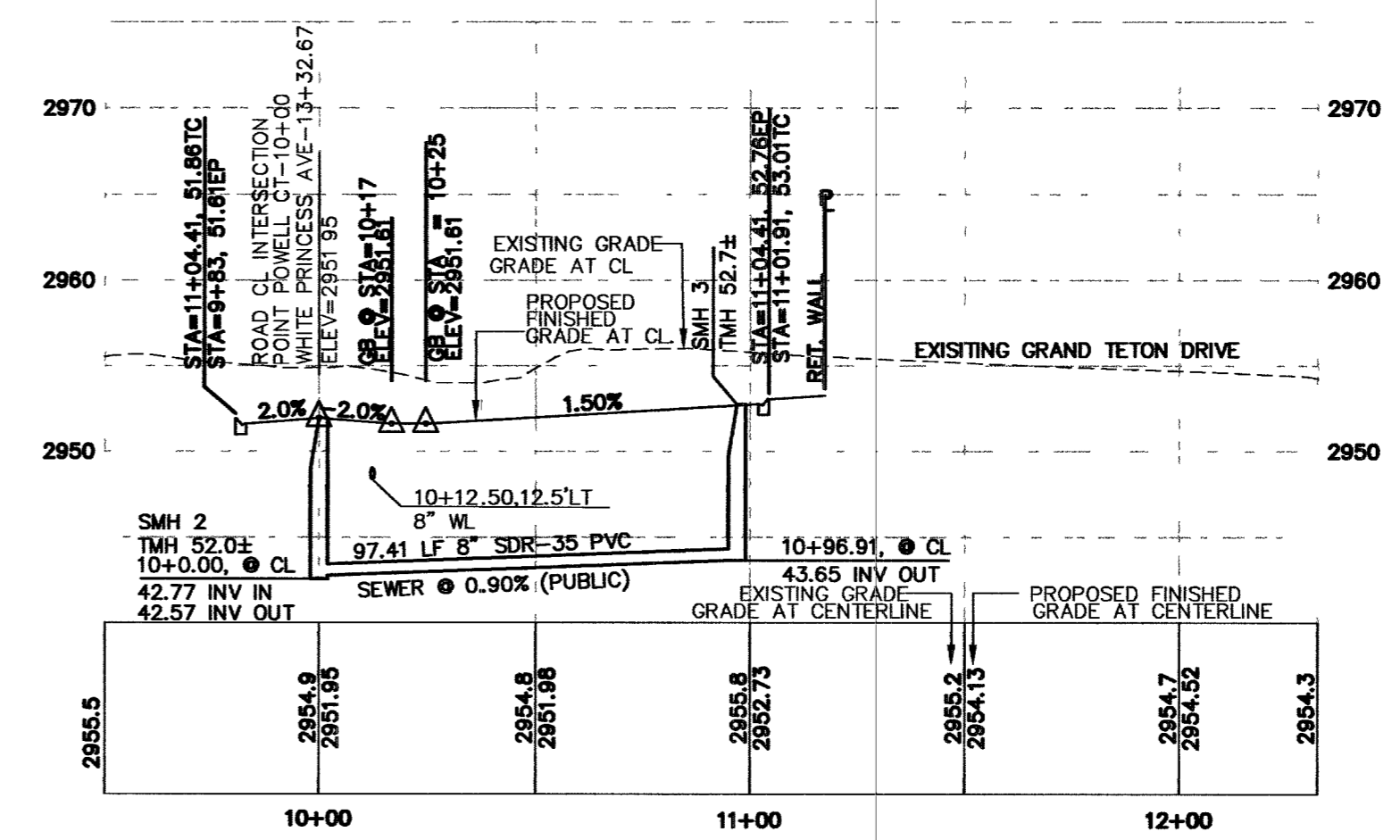
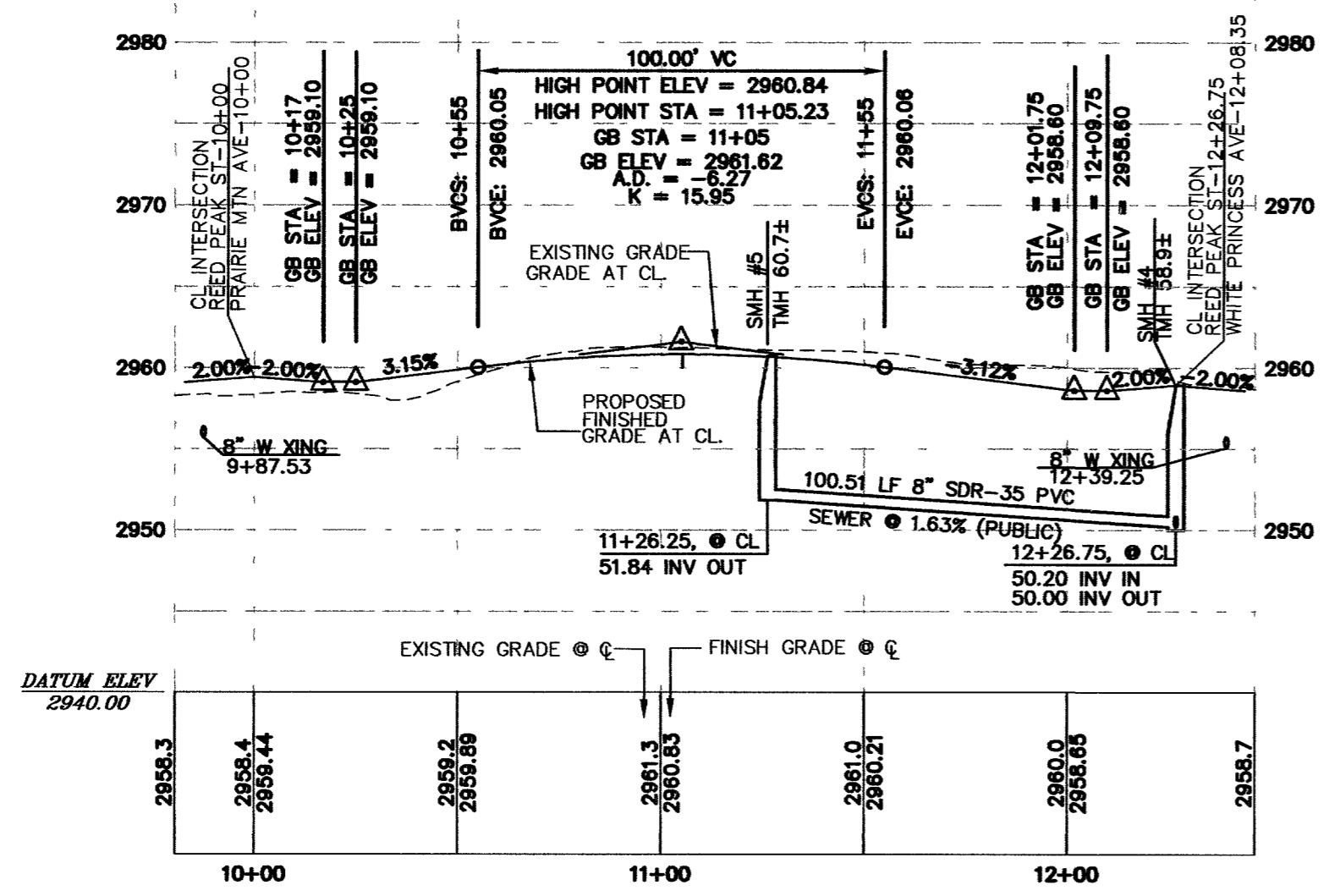
NOTE:
1. ALL PRIVATE STREETS ARE P.U.E., PUBLIC SEWER EASEMENTS, AND PUBLIC DRAINAGE EASEMENTS TO BE PRIVATELY MAINTAINED BY THE HOMEOWNERS ASSOCIATION.
2. QUANTITY ESTIMATES ARE SHOWN ON SHEET C-3.
3. SEE SHEET C-3 FOR BACK OF CURB AND CENTERLINE CONTROL INFORMATION.

Call before you Dig.
UnderGround
1-702-455-7511
1-702-229-6611

Call before you Dig.
1-800-227-2600
UNDERGROUND SERVICE ALERT (USA)

CALL BEFORE YOU DO OVERHEAD
1-702-227-2929

APPROVED FOR CONSTRUCTION
LAS VEGAS VALLEY WATER DISTRICT
PRJ. NO. 111716



38927

CLV DRAWING NO. 107Y4891-6

DRAWING
C-12
12 OF 17 SHEETS

G.C. WALLACE, INC.
Engineers/Planners/Surveyors
1555 SOUTH RAINBOW BLVD., LAS VEGAS, NEVADA 89146
TELEPHONE: (702) 804-2000 • FAX: (702) 804-2299
Northern Terraces Unit 5, Las Vegas, NV 89165-0229

MERRITAGE HOMES
NORTHERN TERRACE - UNIT 6
REED PEAK STREET AND
POINT POWELL COURT PLAN AND PROFILE
JOB NO. 816-002X13