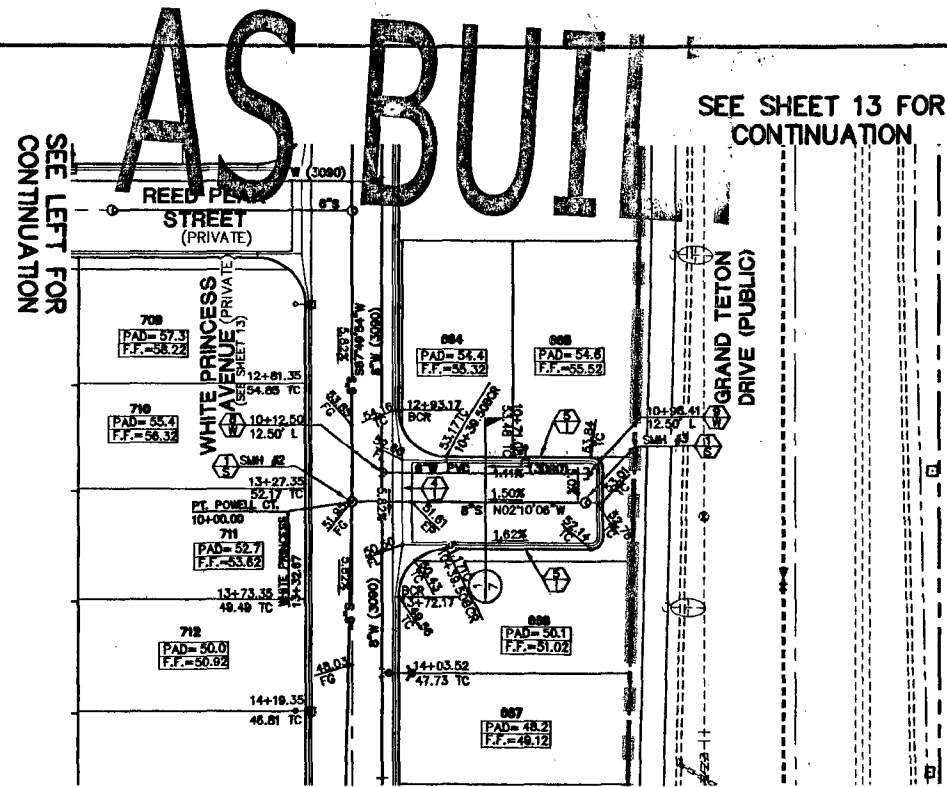


SEE SHEET 10 FOR CONTINUATION

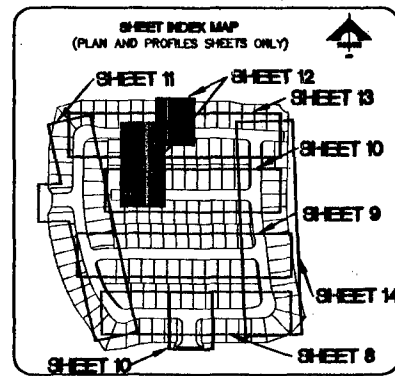
SEE SHEET 13 FOR CONTINUATION

REED PEAK STREET (PRIVATE)



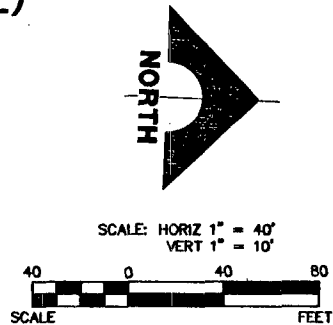
SEE SHEET 13 FOR CONTINUATION

POINT POWELL COURT (PRIVATE)



**BASIS OF BEARINGS**  
 N 86°21'16" E BEING THE SOUTH LINE OF THE SOUTHWEST QUARTER (SW 1/4) OF THE NORTHEAST QUARTER (NE 1/4) OF SECTION 13, T19S, R52E, M.D.M., AS SHOWN BY RECORD OF SURVEY ON FILE IN THE CLARK COUNTY, NEVADA RECORDER'S OFFICE IN FILE 124 OF SURVEYS AT PAGE 94.

BENCHMARK		
DESC.	NAVD 88 DATUM	NAVD 83 DATUM
RIVET AND PLATE IN CONCRETE CYLINDER AT THE NORTHWEST CORNER OF HUALAPAI WAY AND FARM ROAD.	2860.79 (FEET)	871.971 (METERS)



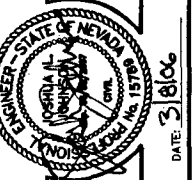
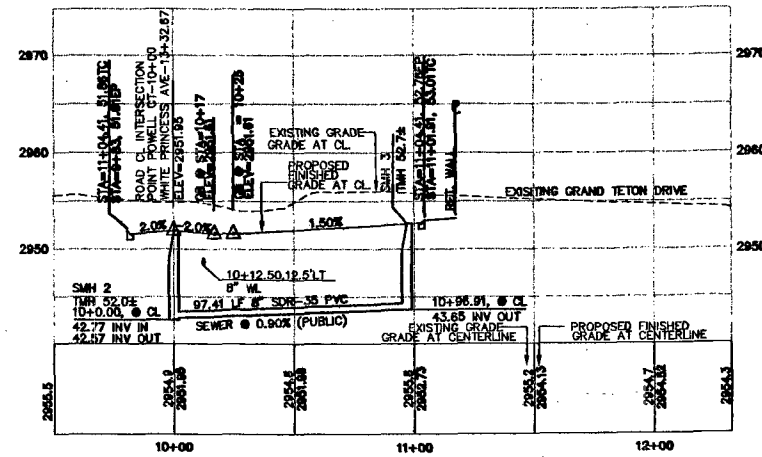
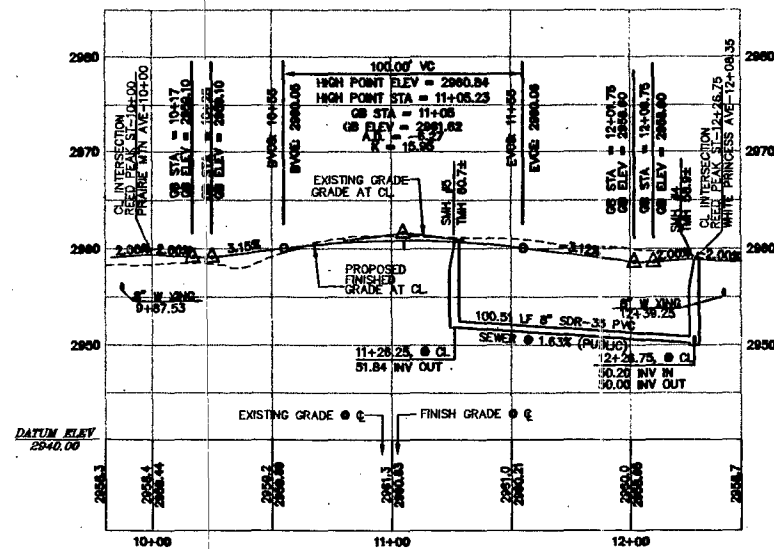
**NOTE:**  
 1. ALL PRIVATE STREETS ARE P.U.E., PUBLIC SEWER EASEMENTS, AND PUBLIC DRAINAGE EASEMENTS TO BE PRIVATELY MAINTAINED BY THE HOMEOWNERS ASSOCIATION.  
 2. QUANTITY ESTIMATES ARE SHOWN ON SHEET C-3.  
 3. SEE SHEET C-3 FOR BACK OF CURB AND CENTERLINE CONTROL INFORMATION.

Call before you Dig.  
 1-702-455-7511  
 1-702-229-6611

Call before you Dig.  
 1-800-227-2600  
 UNDERGROUND SERVICE ALERT (USA)

CALL BEFORE YOU DIG OVERHEAD  
 1-702-227-2929

APPROVED FOR CONSTRUCTION  
*David J. Morgan* 4/15/06  
 HAS VEGAS VALLEY WATER DISTRICT  
 HRA, NO. 11796



AS BUILT

DESIGN: [ ]  
 DRAWN: [ ]  
 CHECK: [ ]  
 ISSUE DATE: [ ]  
 PLOT DATE: 10/28/06  
 PLOT TIME: 10:48:31

G.C. WALLACE, INC.  
 Engineers/Planners/Surveyors  
 1555 SOUTH RAINBOW BLVD., LAS VEGAS, NEVADA 89146  
 TELEPHONE: (702) 864-2000 • FAX: (702) 864-2289  
 Las Vegas, Nevada

MERTAGE HOMES  
 NORTHERN TERRACE - UNIT 6  
 REED PEAK STREET AND  
 POINT POWELL COURT PLAN AND PROFILE

DRAWING  
**C-12**  
 12 OF 17 SHEETS

CLV DRAWING NO. 10744891-6

118232

JOB NO. 89A002X13