

DATE: 3/11/06

DESCRIPTION

REV. DATE

DESIGN: DATE: 02-28-06

DRAWN: DATE: 02-28-06

ISSUE DATE: 02-28-06

PLOT DATE: 02-28-06

PLOT TIME: 14:41:31

PROJECT: 06000000

PROJECT: 06000000

PROJECT: 06000000

PROJECT: 06000000

PROJECT: 06000000

PROJECT: 06000000

PROJECT: 06000000

PROJECT: 06000000

PROJECT: 06000000

AS BUILT

MERTAGE HOMES

DRAWING C-10

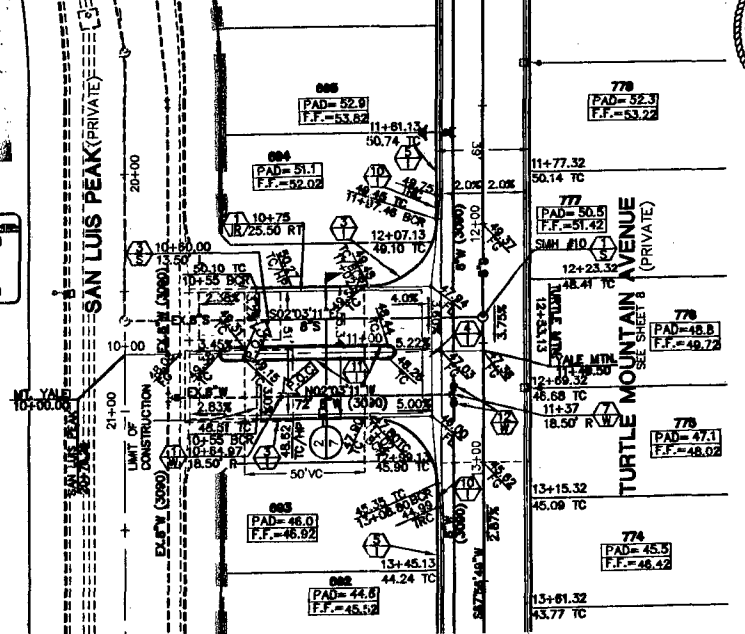
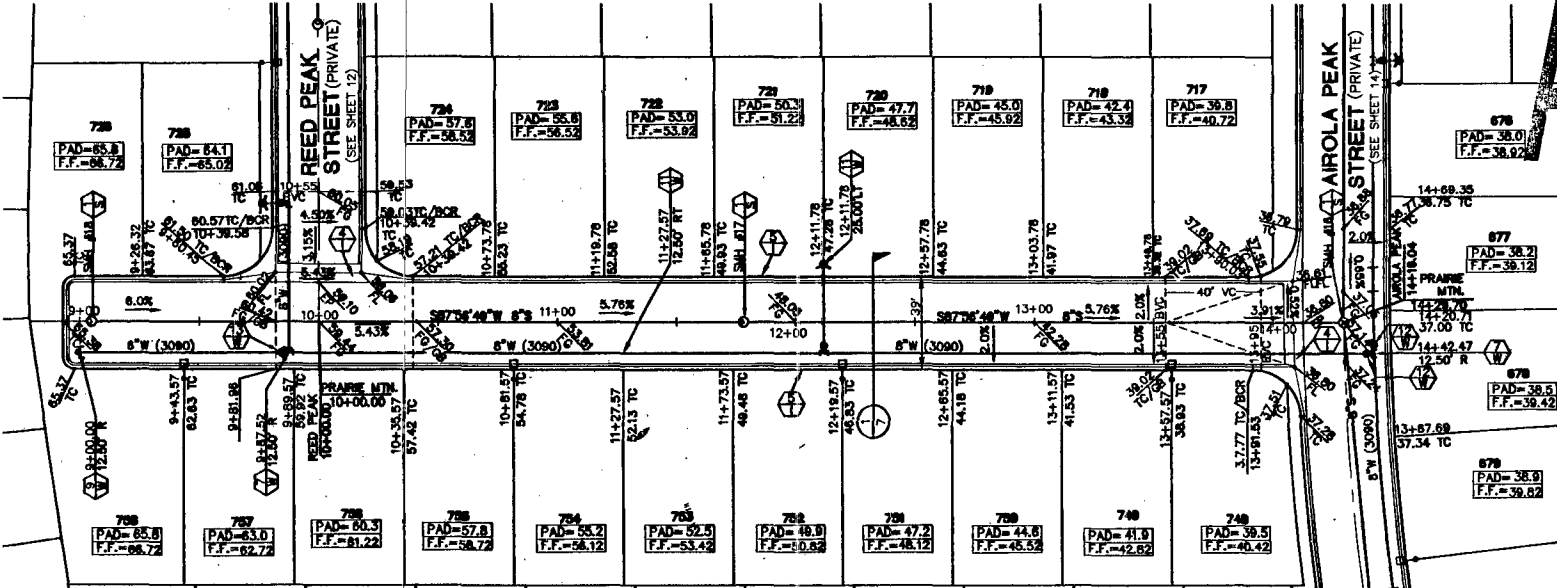
10 OF 17 SHTS

AS BUILT

SEE SHEET 12 FOR CONTINUATION

SEE SHEET 14 FOR CONTINUATION

SEE SHEET 8 FOR CONTINUATION

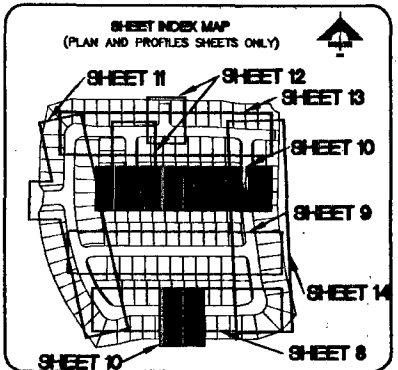


PRARIE MOUNTAIN AVENUE (PRIVATE)

SEE SHEET 14 FOR CONTINUATION

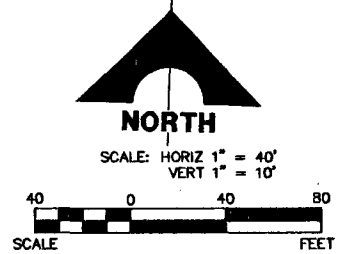
SEE SHEET 8 FOR CONTINUATION

MOUNT YALE STREET (PRIVATE)



BASIS OF BEARINGS
N 88°21'18" E BEING THE SOUTH LINE OF THE SOUTHWEST QUARTER (SW 1/4) OF THE NORTHEAST QUARTER (NE 1/4) OF SECTION 13, T10S, R50E, M.D.M., AS SHOWN BY RECORD OF SURVEY ON FILE IN THE CLARK COUNTY, NEVADA RECORDER'S OFFICE IN FILE 124 OF SURVEYS AT PAGE 94.

BENCHMARK		
DESC.	NANO 88 DATUM	NANO 85 DATUM
RIVET AND PLATE IN CONCRETE CYLINDER AT THE NORTHWEST CORNER OF HUALAPAI WAY AND I'ARM ROAD.	2060.79 (FEET)	671.971 (METERS)



Call before you Dig.
1-702-455-7511
1-702-229-0611

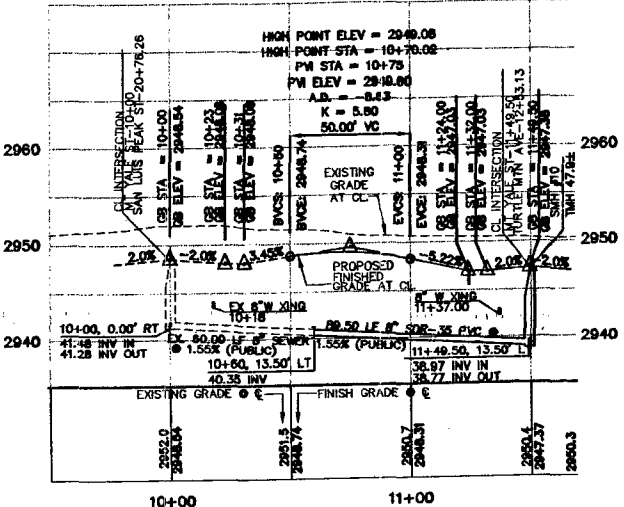
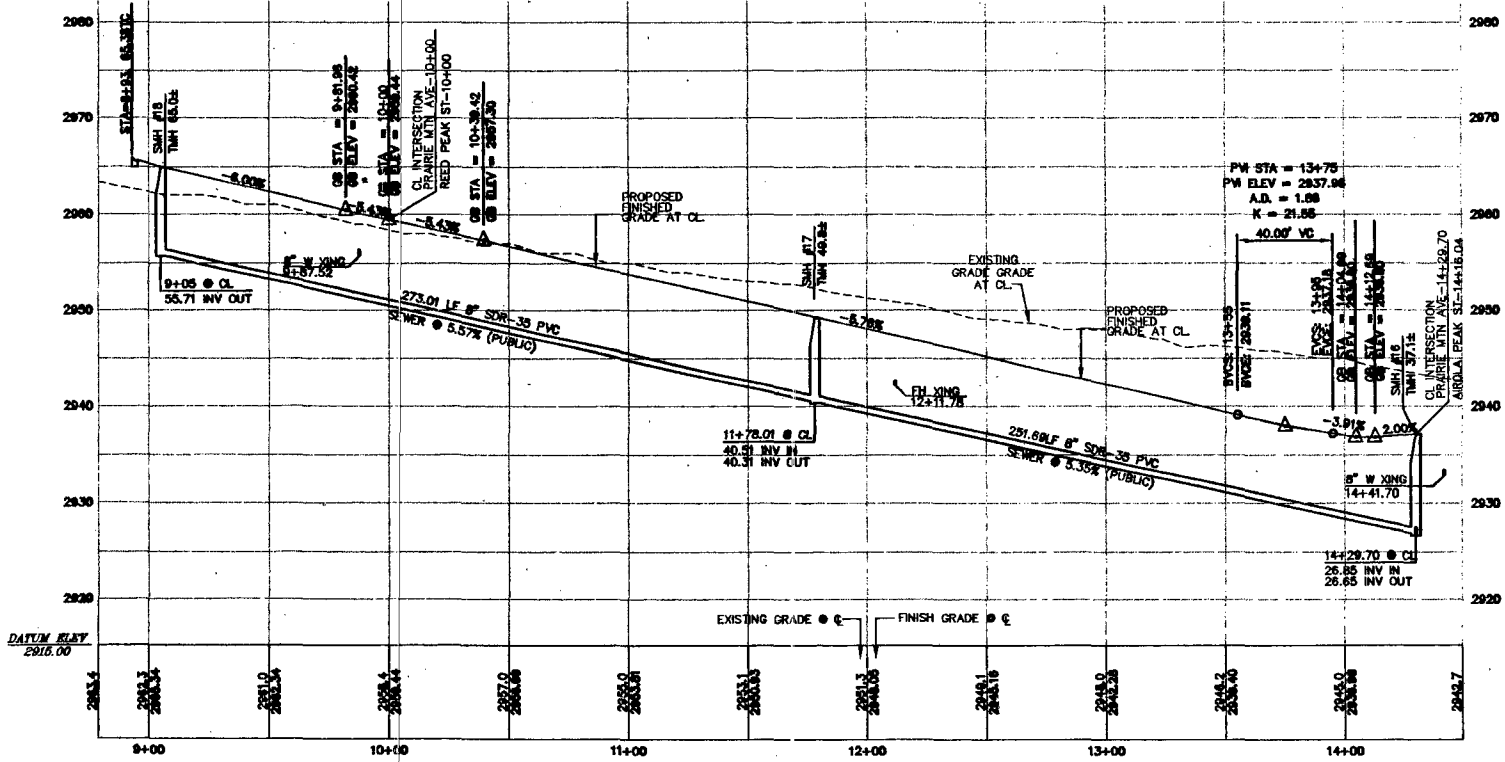
Call before you Dig.
1-800-227-2800

CALL BEFORE YOU DO OVERHEAD
1-702-227-2929

APPROVED FOR CONSTRUCTION
DATE: 4/18/06

NOTE:

1. ALL PRIVATE STREETS ARE P.U.E., PUBLIC SEWER EASEMENTS, AND PUBLIC DRAINAGE EASEMENTS TO BE PRIVATELY MAINTAINED BY THE HOMEOWNERS ASSOCIATION.
2. Q-ANTITY ESTIMATES ARE SHOWN ON SHEET C-3.
3. SEE SHEET C-3 FOR BACK OF CURB AND CENTERLINE CONTROL INFORMATION.



CLV DRAWING NO. 10744891-6

48230

JOB NO. 816.002X13