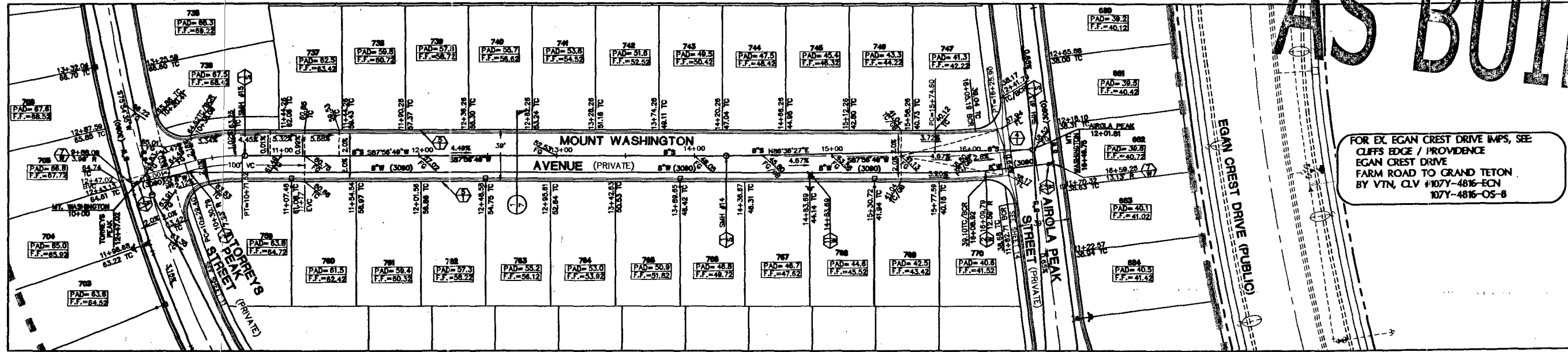


SEE SHEET 11  
FOR CONTINUATION

SEE SHEET 14  
FOR CONTINUATION

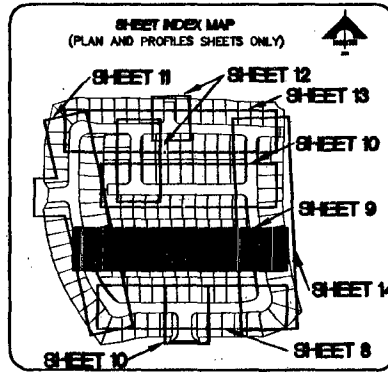
# AS BUILT



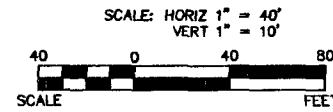
SEE SHEET 11  
FOR CONTINUATION

SEE SHEET 14  
FOR CONTINUATION

## MOUNT WASHINGTON AVENUE (PRIVATE)



**BASIS OF BEARINGS**  
N 88°21'18" E BEING THE SOUTH LINE OF THE SOUTHWEST QUARTER (SW 1/4) OF THE NORTHEAST QUARTER (NE 1/4) OF SECTION 13, T19S, R56E, NDM, AS SHOWN BY RECORD OF SURVEY ON FILE IN THE CLARK COUNTY, NEVADA RECORDER'S OFFICE IN FILE 124 OF SURVEYS AT PAGE 84.



BENCHMARK		
DESC.	HAND ON DATUM	HAND ON DATUM
BLV99 RIVET AND PLATE IN CONCRETE CYLINDER AT THE NORTHWEST CORNER OF HUALAPAI WAY AND FARM ROAD.	2880.79 (FEET)	871.971 (METERS)

**NOTE:**

- ALL PRIVATE STREETS ARE P.U.E., PUBLIC SEWER EASEMENTS, AND PUBLIC DRAINAGE EASEMENTS TO BE PRIVATELY MAINTAINED BY THE HOMEOWNERS ASSOCIATION.
- QUANTITY ESTIMATES ARE SHOWN ON SHEET C-3.
- SEE SHEET C-3 FOR BACK OF CURB AND CENTERLINE CONTROL INFORMATION.

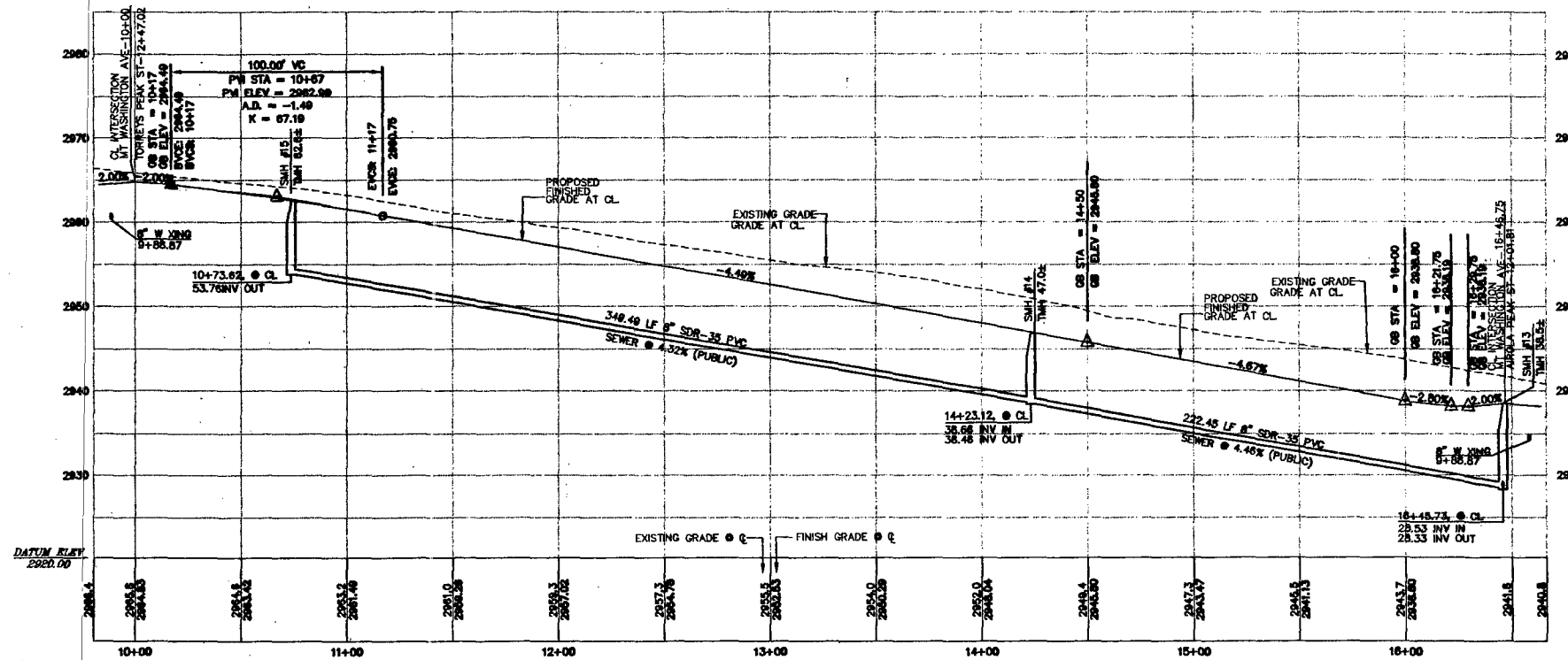
Call before you Dig.  
UnderGround  
1-702-455-7511  
1-702-229-6611

Call before you Dig.  
1-800-227-2600

CALL BEFORE YOU DIG OVERHEAD  
1-702-227-2929



APPROVED FOR CONSTRUCTION  
*Robert Morgan* 6/15/00  
LAS VEGAS VALLEY WATER DISTRICT  
ROLL NO. 11116



AS BUILT

G. C. WALLACE, INC.  
Engineers/Planners/Surveyors  
1555 SOUTH RAINBOW BLVD., LAS VEGAS, NEVADA 89148  
TELEPHONE: (702) 804-2000 • FAX: (702) 804-2289

MERTAGE HOMES  
NORTHERN TERRACE - UNIT 6  
MOUNT WASHINGTON AVENUE PLAN AND PROFILE  
JOB NO. 88-002-X18

CLV DRAWING NO. 107Y 4891-6