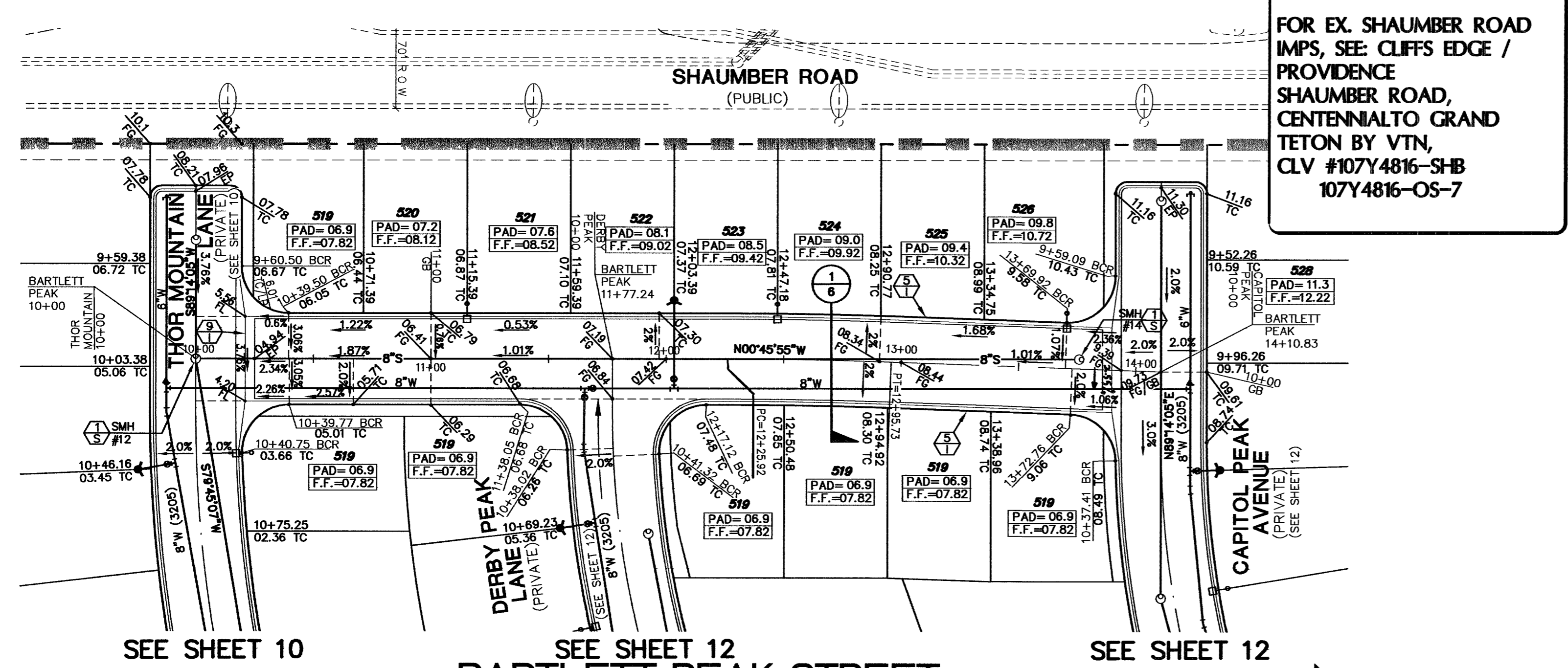
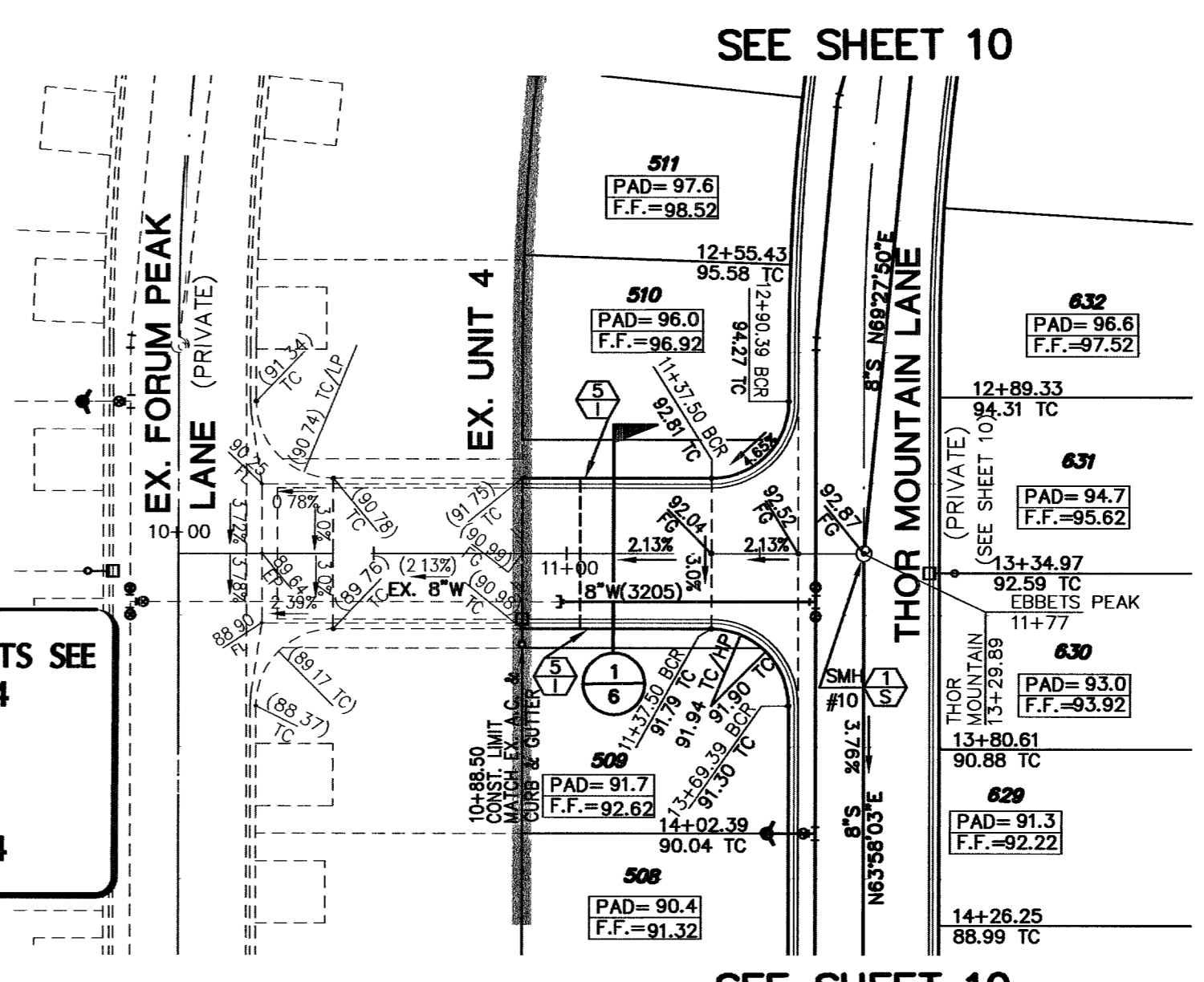


DATE: 06/16



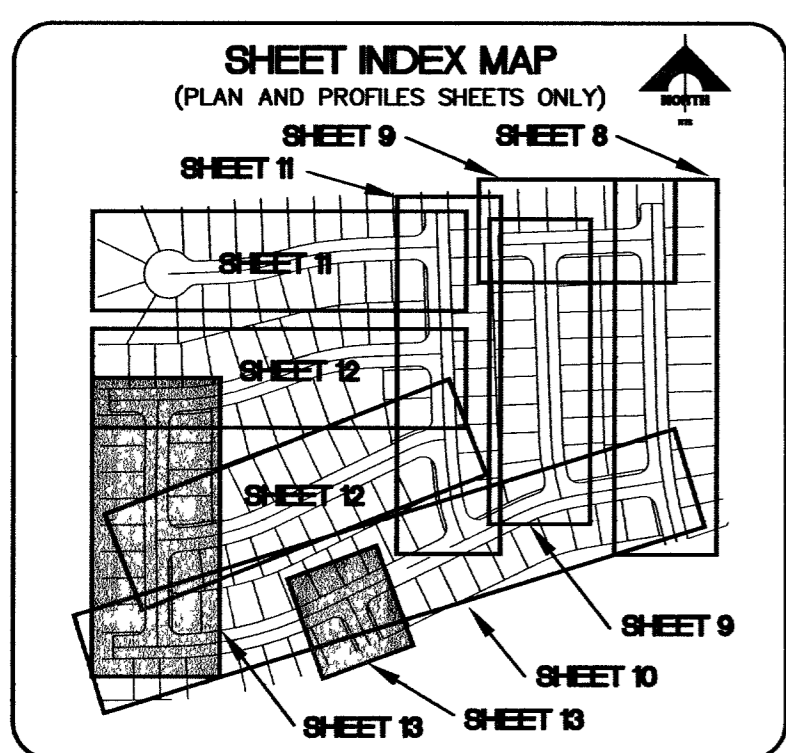
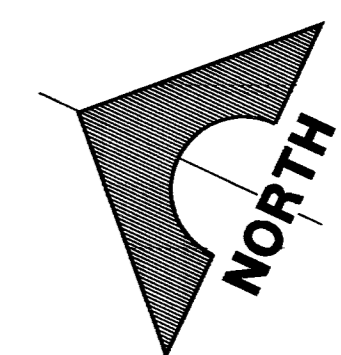
FOR EX. SHAUMBER ROAD IMP'S, SEE: CLIFFS EDGE / PROVIDENCE SHAUMBER ROAD, CENTENNIAL GRAND TETON BY VTN, CLV #107Y4816-SHB 107Y4816-OS-7

FOR EXISTING IMPROVEMENTS SEE NORTHERN TERRACE UNIT 4 IMPROVEMENT PLANS by GC WALLACE, INC JOB NO. 819.002.X11 CLV DWG NO. 107Y-4891-4



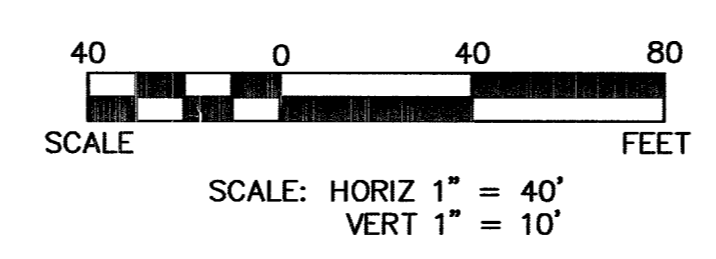
SEE SHEET 10

SEE SHEET 10
EBBETS PEAK STREET
(PRIVATE)



BASIS OF BEARINGS
N 88°21'18" E BEING THE SOUTH LINE OF THE SOUTHWEST QUARTER (SW 1/4) OF THE NORTHEAST QUARTER (NE 1/4) OF SECTION 13, T19S, R56E, M.D.M., AS SHOWN BY RECORD OF SURVEY ON FILE IN THE CLARK COUNTY, NEVADA RECORDER'S OFFICE IN FILE 124 OF SURVEYS AT PAGE 94.

BENCHMARK		
DESC.	NAVD 88 DATUM	NAVD 88 DATUM
BLV99 RIVET AND PLATE IN CONCRETE CYLINDER AT THE NORTHWEST CORNER OF HUALAPAI WAY AND FARM ROAD.	2860.79 (FEET)	871.971 (METERS)



NOTE
1. ALL PRIVATE STREETS ARE P.U.E., PUBLIC SEWER EASEMENTS, AND PUBLIC DRAINAGE EASEMENTS TO BE PRIVATELY MAINTAINED BY HOA.

Call before you Dig. 1-702-455-7511

UnderGround 1-702-229-6611

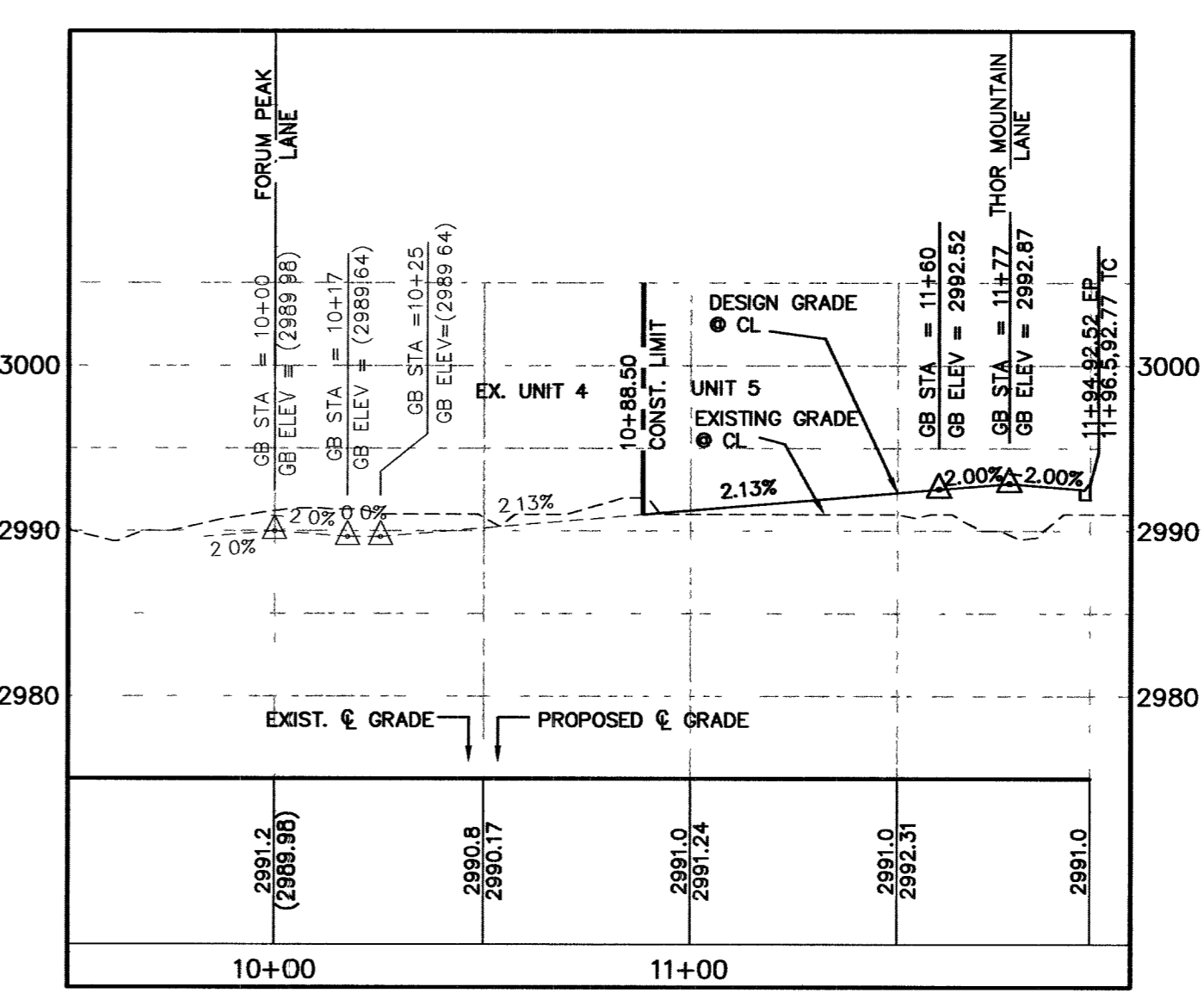
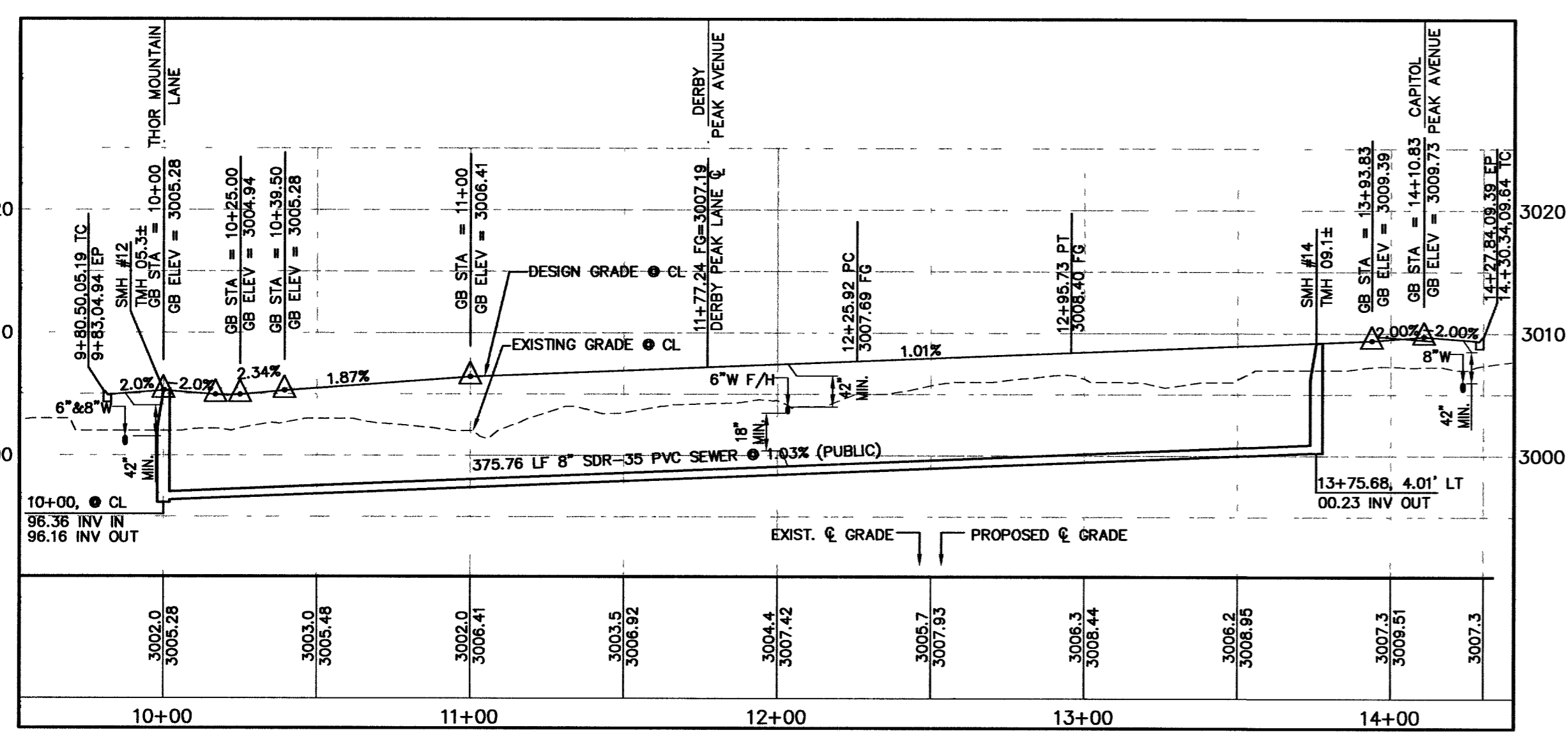
Call before you Dig. 1-800-227-2600

UNDERGROUND SERVICE ALERT (USA)

CALL BEFORE YOU DO OVERHEAD. 1-702-227-2929

APPROVAL: _____ LVVWD NO. 111714

LAS VEGAS VALLEY WATER DISTRICT _____ DATE _____



93124

CLV DRAWING NO. 107Y4891-5

DRAWING C-13 15 OF 17 SHTS

MERTAGE CORPORATION
NORTHERN TERRACE - UNIT 5
BARTLETT PEAK STREET AND
EBBETS PEAK STREET PLAN AND PROFILE

G.C. WALLACE, INC.
Engineers/Planners/Surveyors
1585 SOUTH RAINBOW BLVD., LAS VEGAS, NEVADA 89148
TELEPHONE: (702) 864-2600 • FAX: (702) 864-2289
www.gcw.com

JOB NO. 819.002.X12