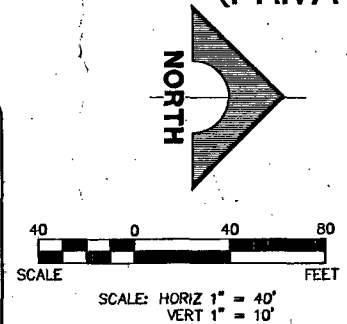
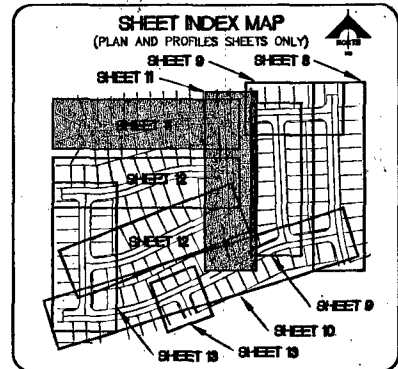


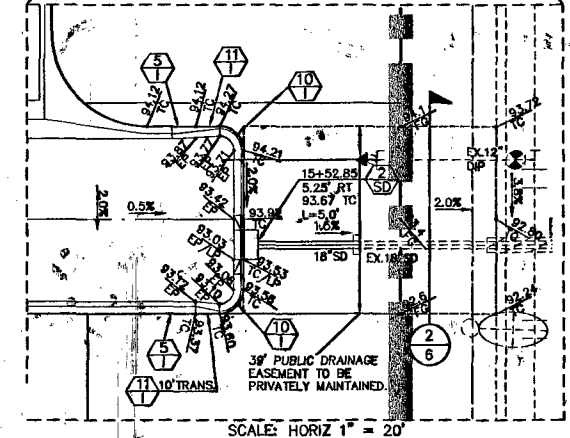
AS BUILT

FOR EX. GRAND TETON DRIVE IMPS, SEE CLIFFS EDGE / PROVIDENCE GRAND TETON DRIVE, PULL ROAD TO HUALAPAI WAY BY VTN, CLV #107Y4816-GT 107Y4816-OS-8



BASIS OF BEARINGS
 N 88°21'00" E BEING THE SOUTH LINE OF THE SOUTHWEST QUARTER (SW 1/4) OF THE NORTHEAST QUARTER (NE 1/4) OF SECTION 13, T19S, R59E, M.D.M., AS SHOWN BY RECORD OF SURVEY ON FILE IN THE CLARK COUNTY, NEVADA RECORDER'S OFFICE IN FILE 124 OF SURVEYS AT PAGE 94.

DESC.	NAD 83 DATUM	NAD 83 DATUM
BLV98 RIVET AND PLATE IN CONCRETE CYLINDER AT THE NORTHWEST CORNER OF HUALAPAI WAY AND FARM ROAD.	2860.79 (FEET)	871.971 (METERS)



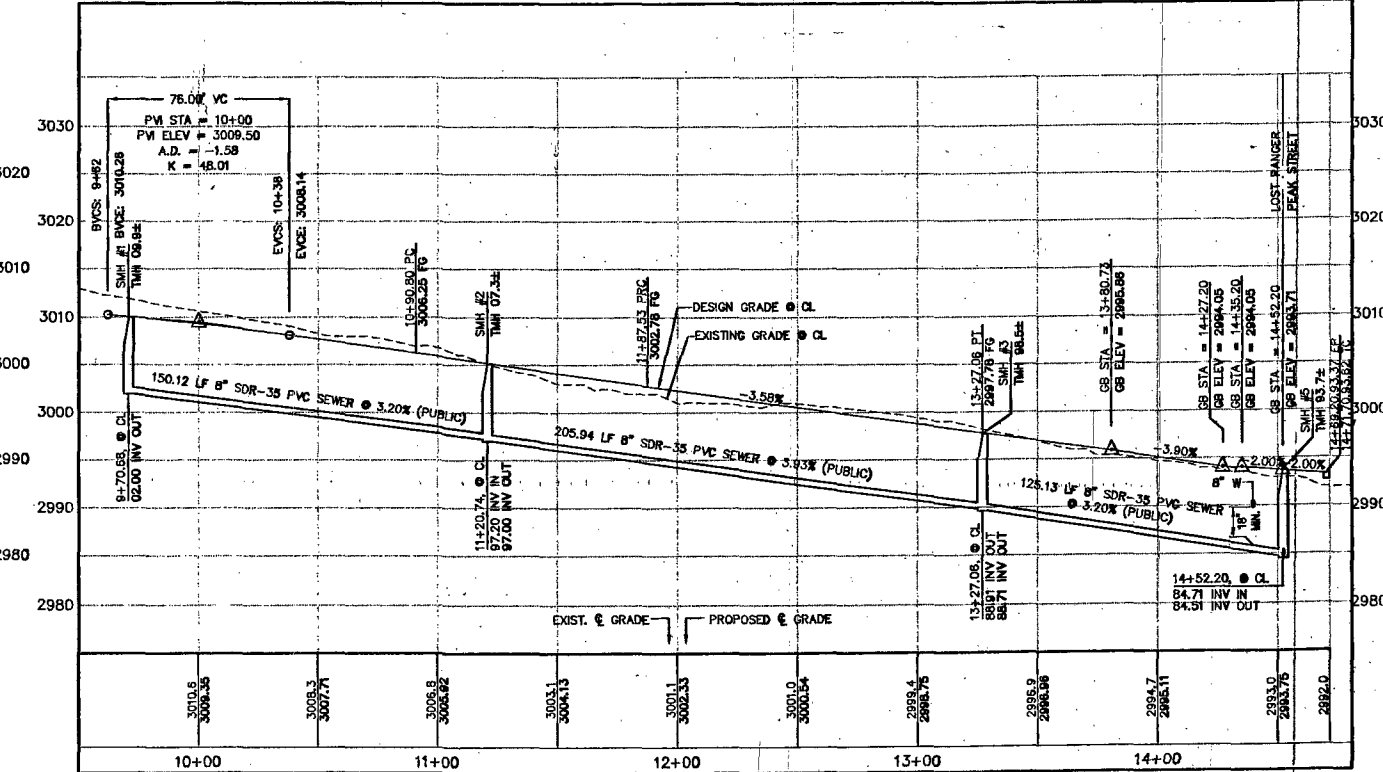
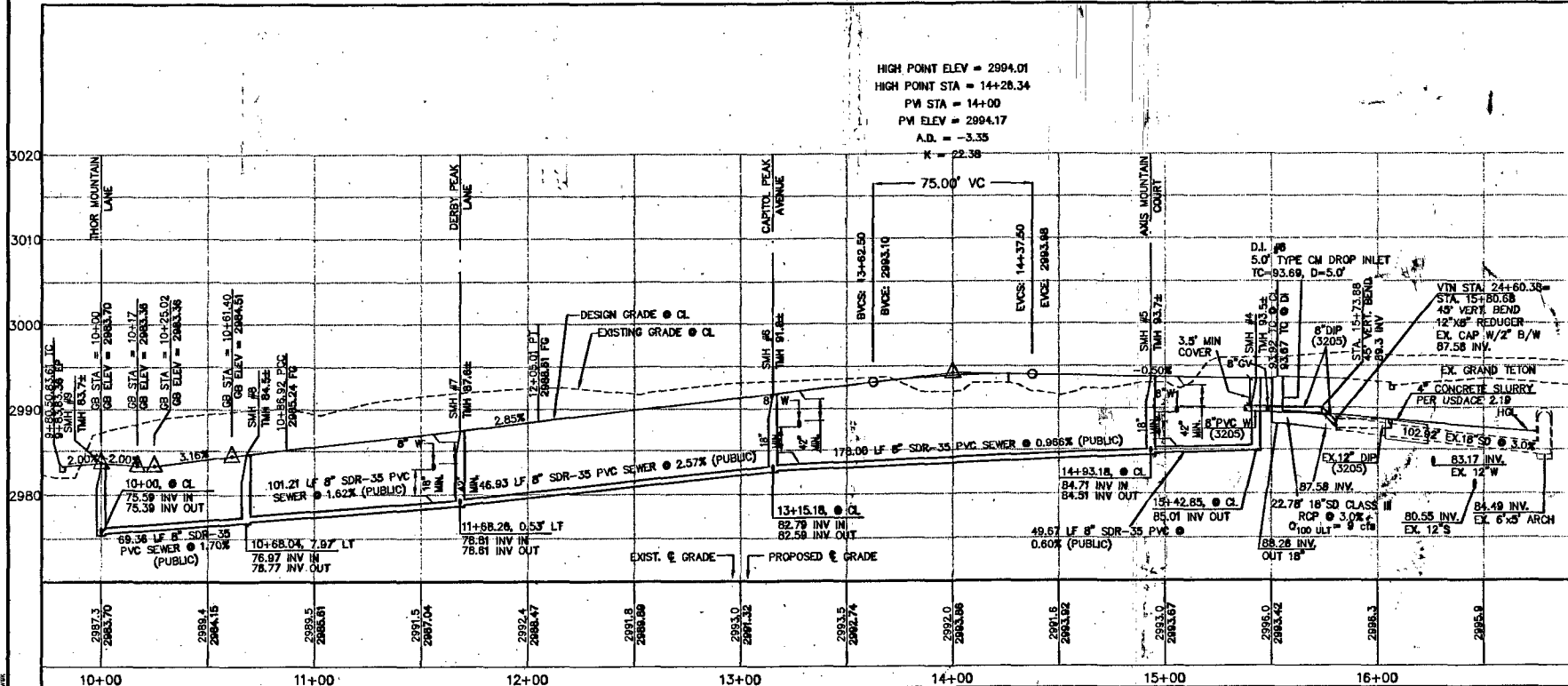
NOTE:
 1. ALL PRIVATE STREETS ARE P.U.E., PUBLIC SEWER EASEMENTS, AND PUBLIC DRAINAGE EASEMENTS TO BE PRIVATELY MAINTAINED BY HOA.

Call before you Dig.
 1-702-455-7511
 1-702-229-6611

Call before you Dig.
 1-800-227-2600
 UNDERGROUND SERVICE ALERT (USA)

CALL BEFORE YOU DIG OVERHEAD
 1-702-227-2929

APPROVAL:
 LAS VEGAS VALLEY WATER DISTRICT
 LVWD NO. 111714
 DATE: 8-20-06



119340

CLV DRAWING NO. 107Y4816-5

AS BUILT

DESIGN: G.C. WALLACE, INC.
 CHECK: ENGINEERS/PLANNERS/SURVEYORS
 ISSUE DATE: 1555 SOUTH RAINBOW BLVD., LAS VEGAS, NEVADA 89148
 PLOT DATE: 08-08-06 TELEPHONE: (702) 804-2600 • FAX: (702) 804-2299
 PLOT TIME: 08:29:43

MERITAGE CORPORATION
 NORTHERN TERRACE - UNIT 5
 LOST RANGER PEAK STREET AND
 AXIS MOUNTAIN COURT PLAN AND PROFILE
 DRAWING C-11
 13 OF 17 SHEETS

DATE: 08-29-06
 REV: DATE