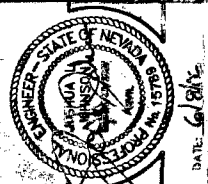


FOR EX. SHAMBER ROAD MAPS, SEE CLIFFS EDGE / PROVIDENCE SHAMBER ROAD, CENTRAL TO RASO, ETC. BY VTN, CLV 107Y486-S-B, 107Y486-OS-7.

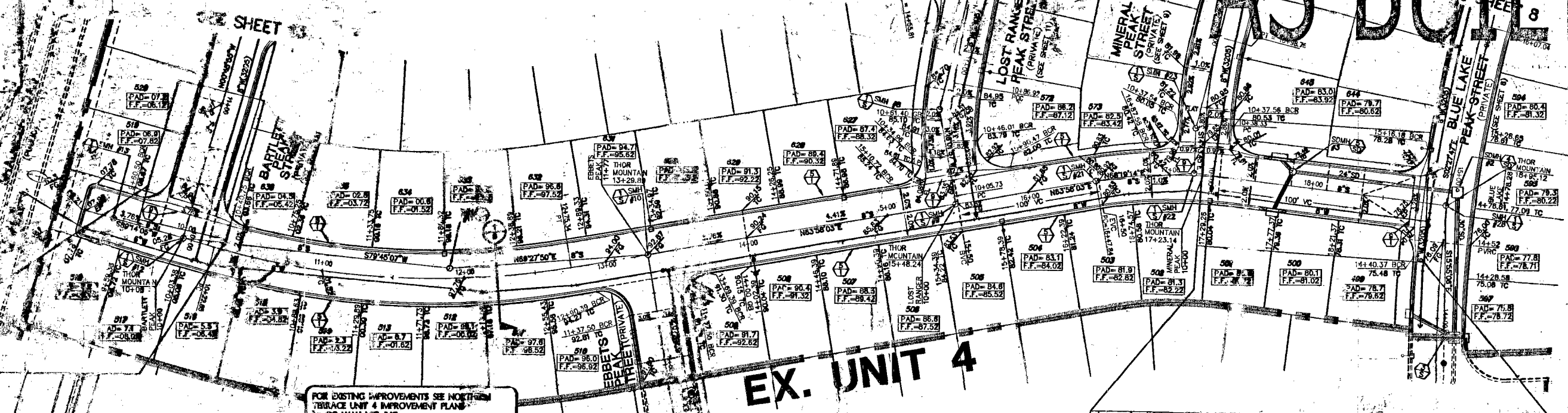
SEE SHEET 1

SEE SHEET 8

AS BUILT



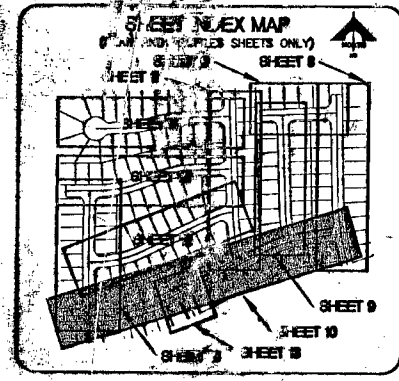
AS BUILT



FOR EXISTING IMPROVEMENTS SEE NORTHERN TERRACE UNIT 4 IMPROVEMENT PLAN BY GC WALLACE, INC. NO. 819,002,311 3.1V DWG NO. 107Y-4891-4

EX. UNIT 4

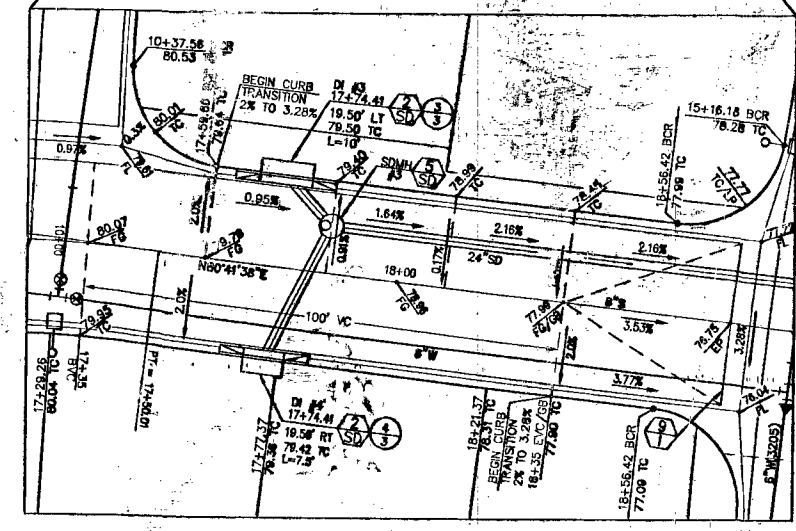
THOR MOUNTAIN LANE (PRIVATE)



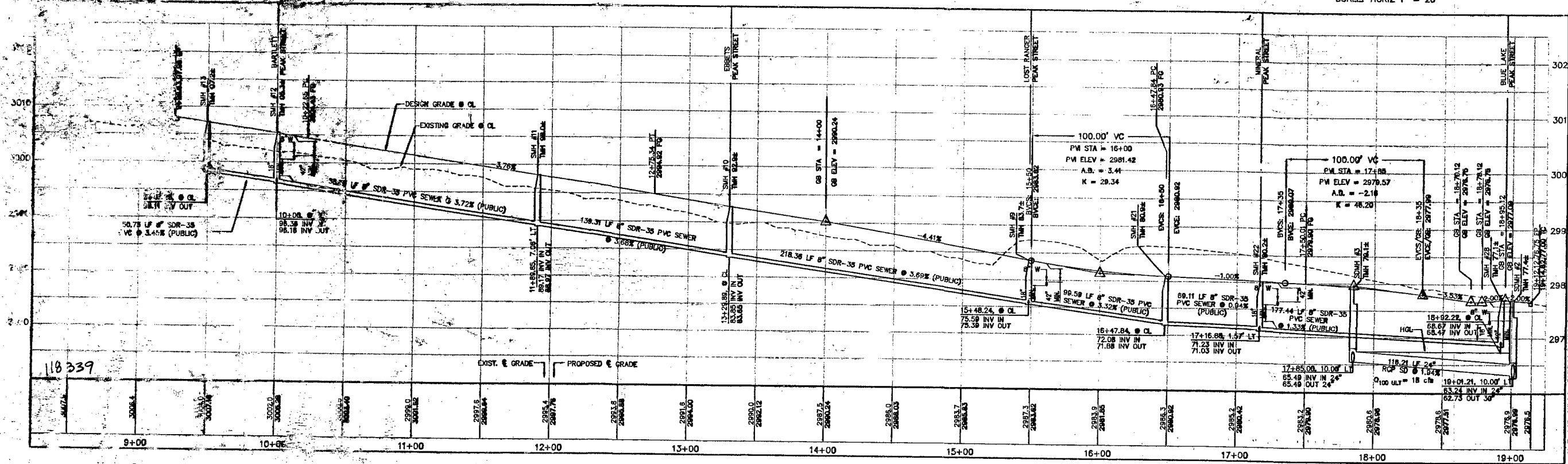
BASIS OF BEARINGS
 2°22'18" E BEING THE SOUTH LINE OF THE SOUTHWEST QUARTER (SW 1/4) OF THE NORTHEAST QUARTER (NE 1/4) OF SECTION 13, T19S, R5E, M.D.M., AS SHOWN BY RECORD SURVEY ON FILE IN THE CLARK COUNTY, NEVADA RECORDER'S OFFICE IN FILE 124 OF SURVEYS AT PAGE 84.

DESC.	NAVD 88 DATUM	NAVD 83 DATUM
IRVET AND PLATE IN CONCRETE CYPINDER AT THE NORTHWEST CORNER OF HUALAPAI WAY AND FARM ROAD.	2860.79 (FEET)	871.971 (METERS)

NOTE:
 1. ALL PRIVATE STREETS ARE P.U.E., PUBLIC SEWER EASEMENTS, AND PUBLIC DRAINAGE EASEMENTS TO BE PRIVATELY MAINTAINED BY HOA.



SCALE: HORIZ 1" = 20'



Call before you UnderGround
 1-702-455-7511
 1-702-229-6611

Call before you Dig.
 1-800-227-2600
UNDERGROUND SERVICE ALERT (USA)

CALL BEFORE YOU DO OVERHEAD
 1-702-227-2929

APPROVAL: LVWD NO. 111714 8-06-06 DATE

CLV DRAWING NO. 107Y486-S-B
 107Y486-OS-7
 DRAWING C-10