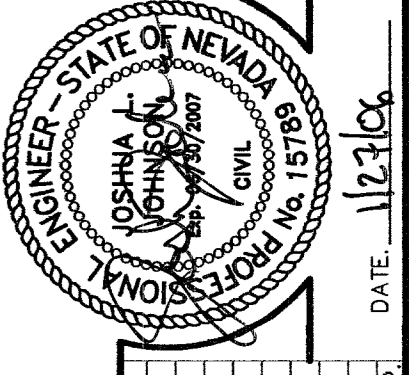
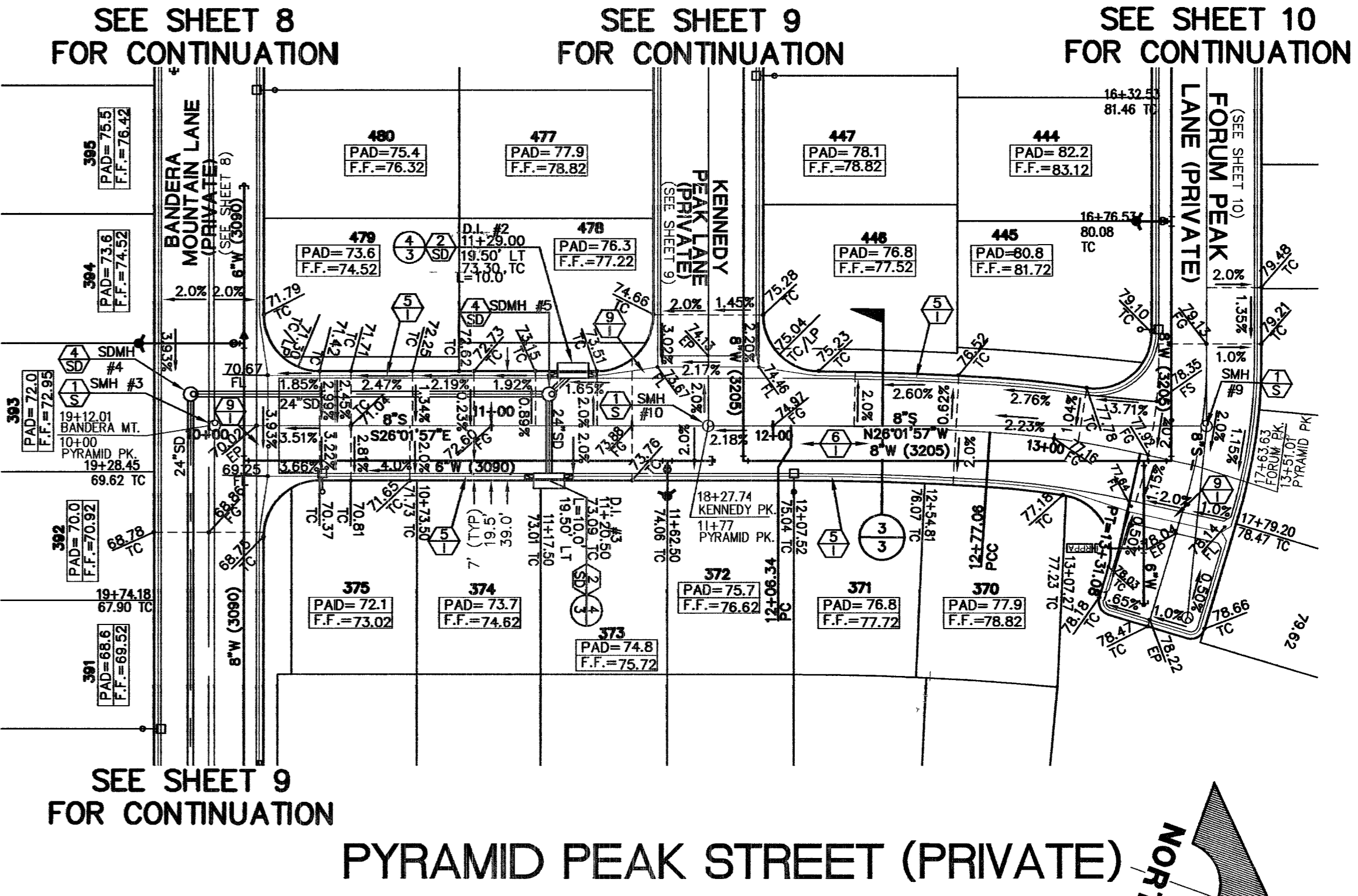
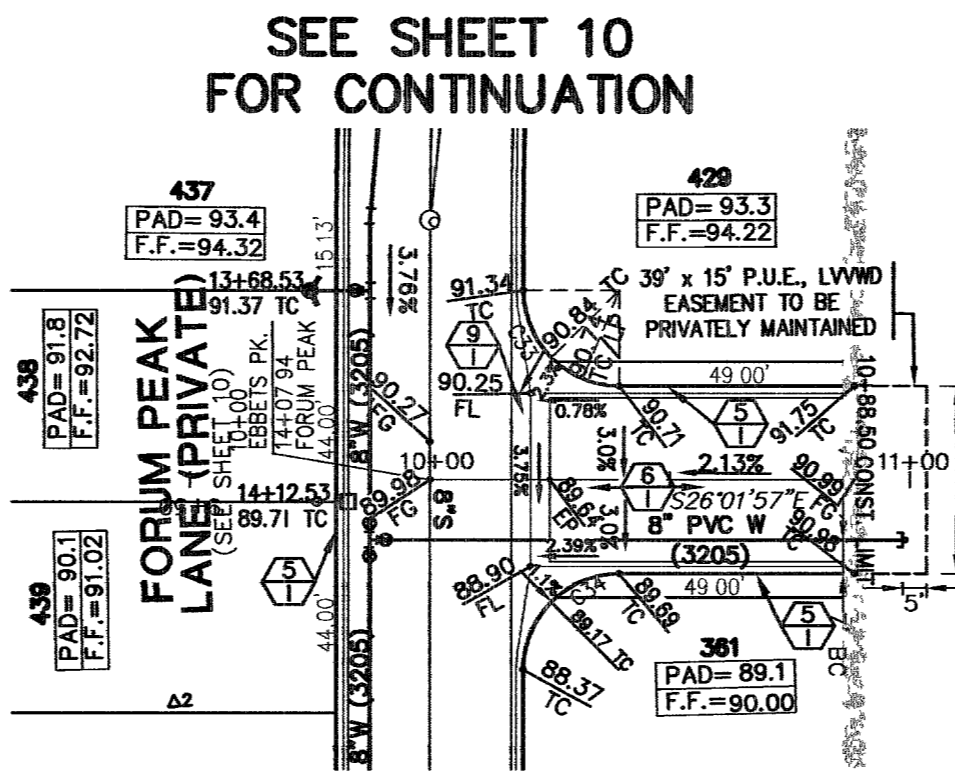


FOR EX. SHAUMBER ROAD IMP'S, SEE:
CLIFFS EDGE / PROVIDENCE
SHAUMBER ROAD
CENTENNIAL TO GRAN TETON
BY VTN, CLV #1074-4816-OS-7, 10744816-SHR



SEE SHEET 8 FOR CONTINUATION

SEE SHEET 9 FOR CONTINUATION

SEE SHEET 10 FOR CONTINUATION

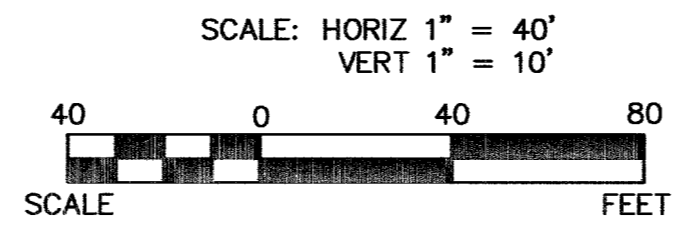
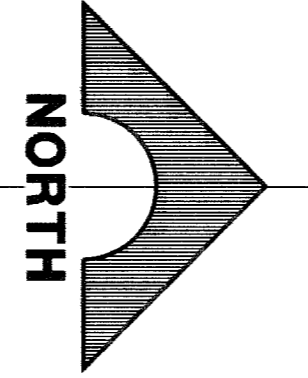
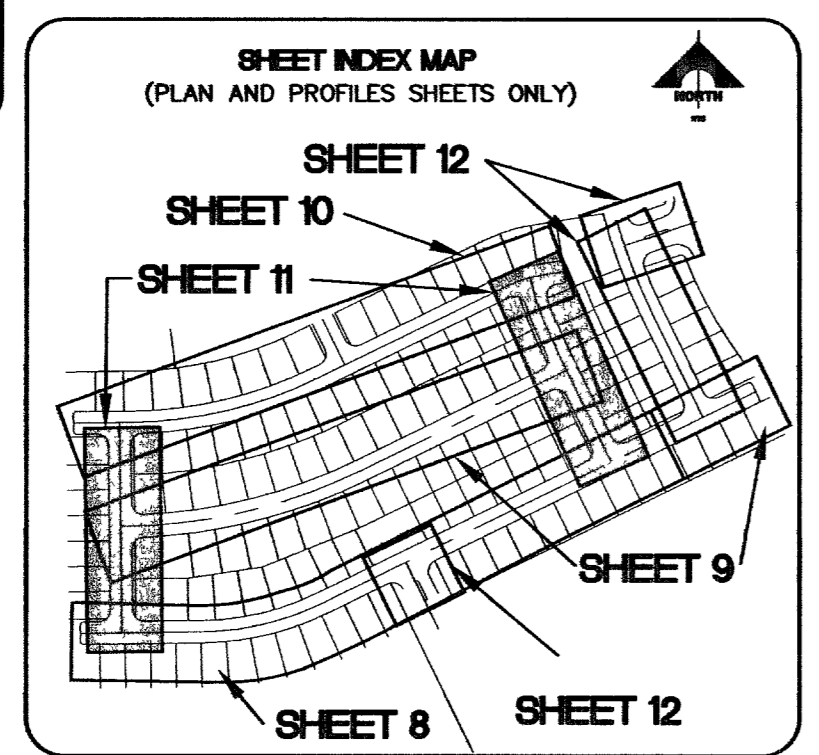
SEE SHEET 9 FOR CONTINUATION

FOR EXISTING IMPROVEMENTS SEE NORTHERN TERRACE UNIT 1 IMPROVEMENT PLANS by GCW WALLACE, INC JOB NO. 819.002.X08 CLV DWG NO. 10744891-1

VERDUGO PEAK STREET (PRIVATE)

EBBETS PEAK STREET (PRIVATE)

PYRAMID PEAK STREET (PRIVATE)



BASIS OF BEARINGS
N 88°21'18" E BEING THE SOUTH LINE OF THE SOUTHWEST QUARTER (SW 1/4) OF THE NORTHEAST QUARTER (NE 1/4) OF SECTION 13, T18S, R86E, M.D.M., AS SHOWN BY RECORD OF SURVEY ON FILE IN THE CLARK COUNTY, NEVADA RECORDER'S OFFICE IN FILE 124 OF SURVEYS AT PAGE 94.

BENCHMARK		
DESC.	NAVD 88 DATUM	NAVD 88 DATUM
8LV99 RIVET AND PLATE IN CONCRETE CYLINDER AT THE NORTHWEST CORNER OF HUALAPAI WAY AND FARM ROAD.	2860.79 (FEET)	871.971 (METERS)

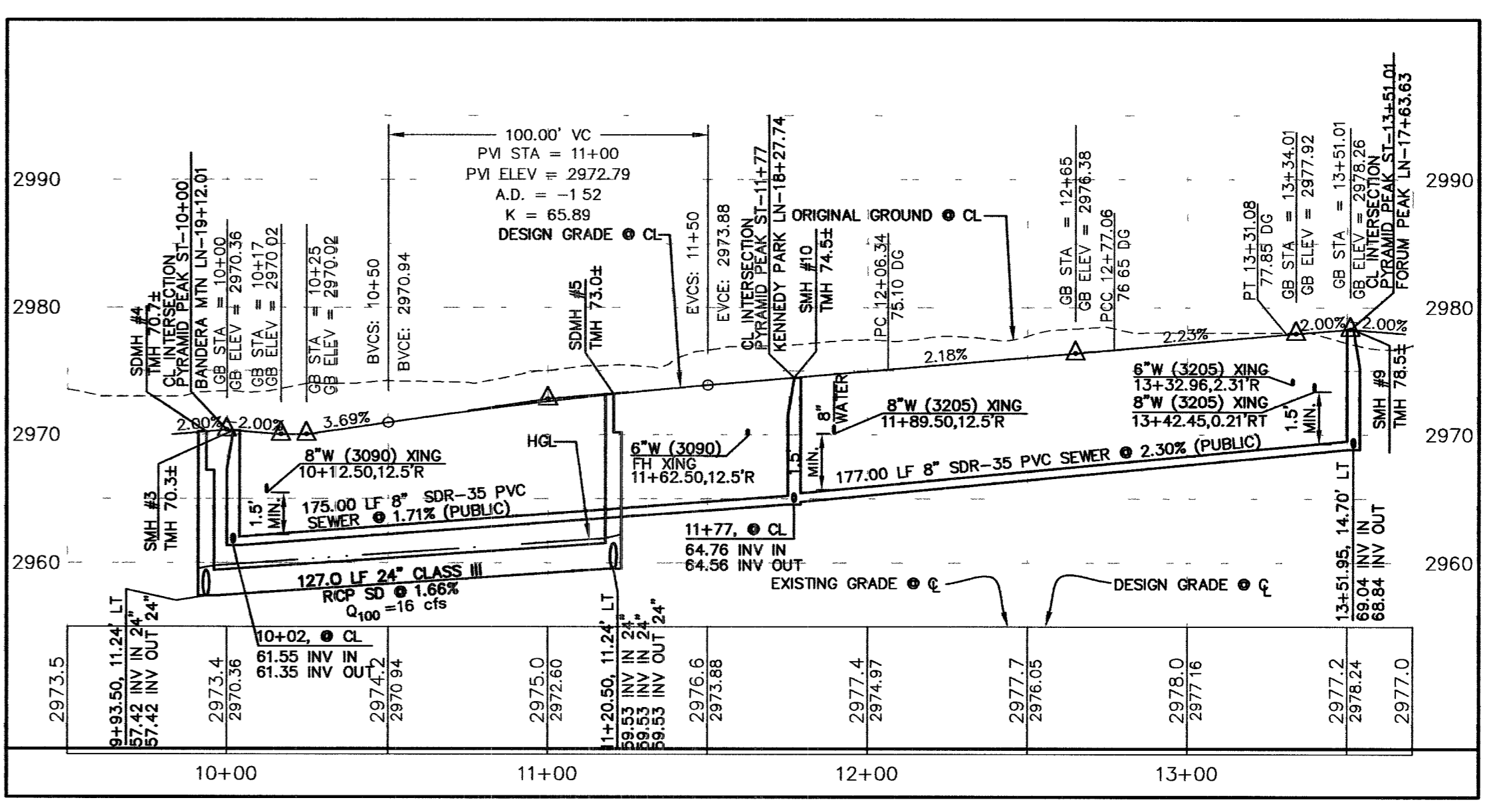
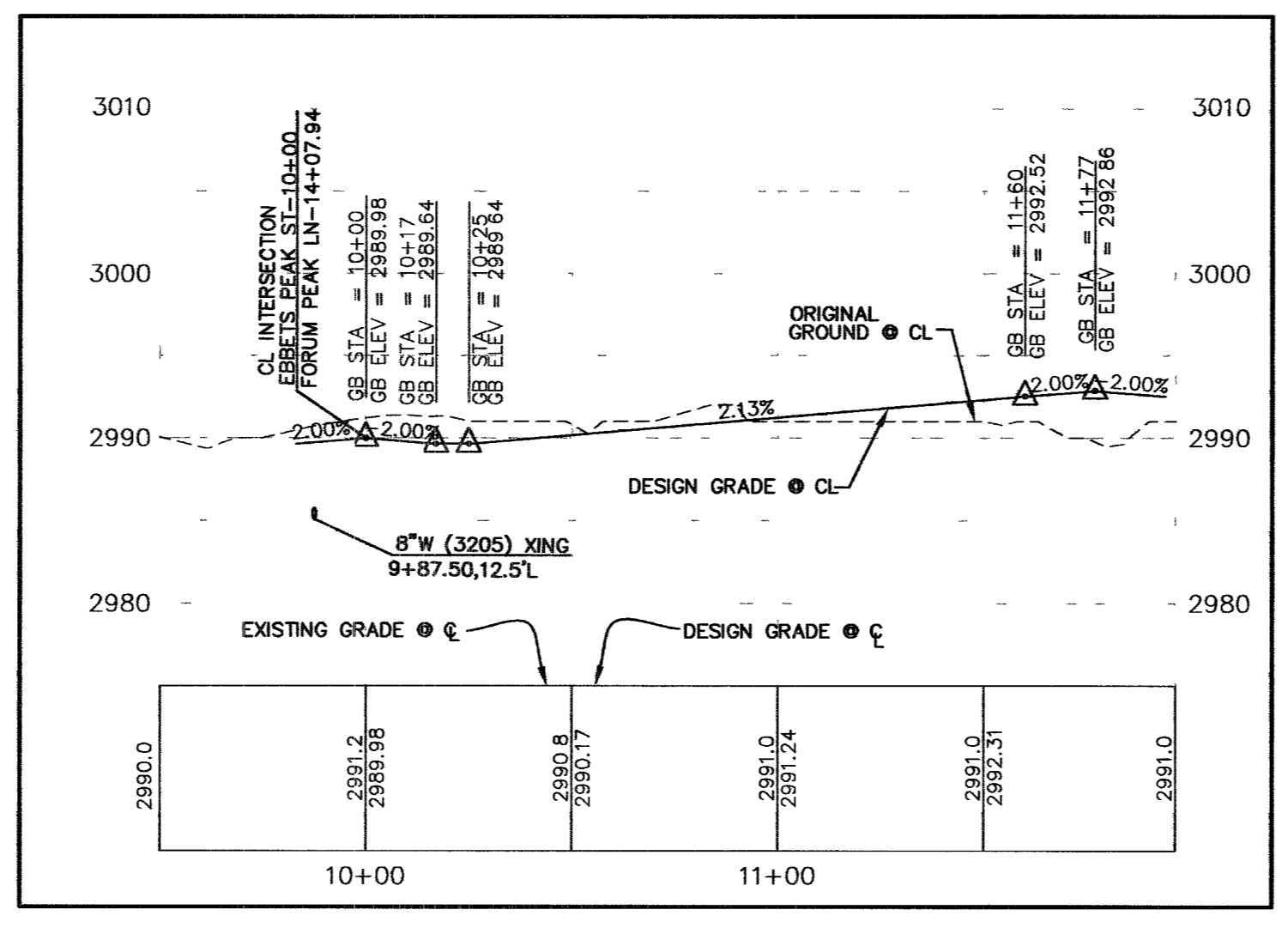
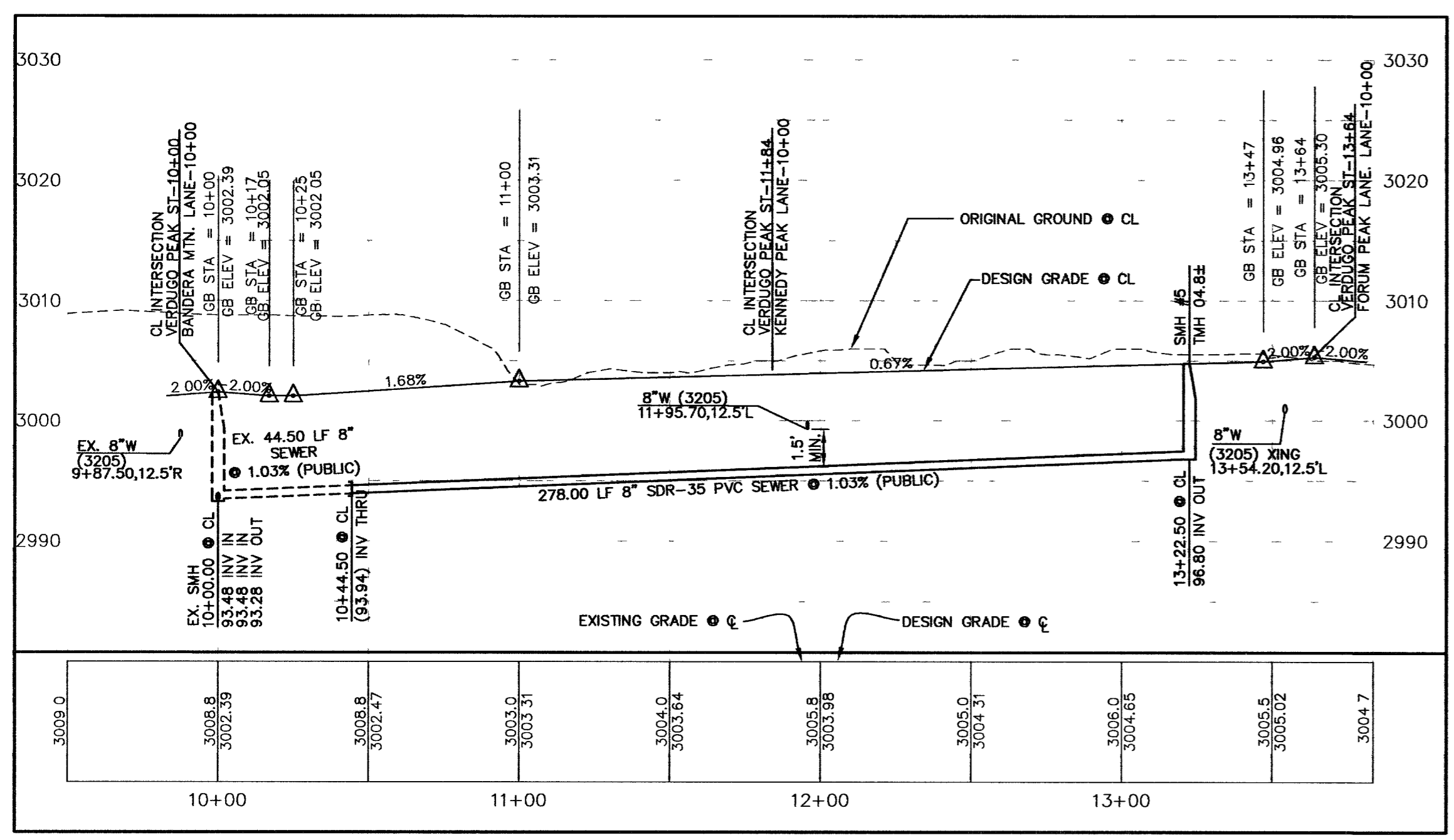
NOTE:
ALL PRIVATE STREETS ARE P.U.E., PUBLIC SEWER EASEMENTS, AND PUBLIC DRAINAGE EASEMENTS TO BE PRIVATELY MAINTAINED BY THE HOMEOWNERS ASSOCIATION.

Call before you Dig.
1-702-455-7511
1-702-229-6611

Call before you Dig.
1-800-227-2600

Call before you Dig.
1-702-227-2929

APPROVED FOR CONSTRUCTION
LAS VEGAS VALLEY WATER DISTRICT
PROJ. # 111607



88584

CLV DRAWING NO. 10744891-4

G.C. WALLACE, INC.
Engineers/Planners/Surveyors
1555 SOUTH RAINBOW BLVD., LAS VEGAS, NEVADA 89148
TELEPHONE: (702) 804-2000 • FAX: (702) 804-2299
15 Northern Terrace, Unit 4 Las Vegas, NV 89101

HERITAGE CORPORATION
NORTHERN TERRACE - UNIT 4
VERDUGO PEAK STREET, EBBETS PEAK STREET
AND PYRAMID PEAK STREET PLAN AND PROFILE

DRAWING
C-11
11 OF 15 SHEETS

JOB NO. 819.002.X1