

SEE SHEET 11 FOR CONTINUATION

SEE SHEET 11 FOR CONTINUATION

SEE SHEET 12 FOR CONTINUATION

FOR EXISTING IMPROVEMENTS SEE NORTHERN TERRACE UNIT 1 IMPROVEMENT PLANS by GCW WALLACE, INC JOB NO. 819.002.X08 CLV DWG NO. 107Y4891-1

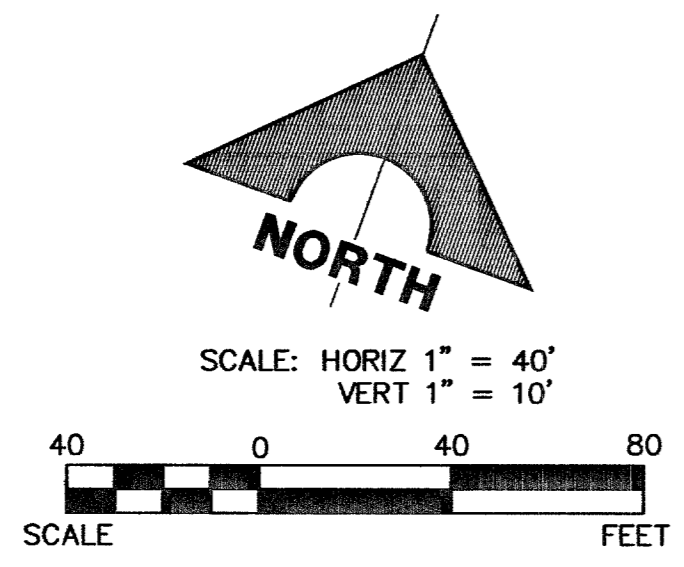
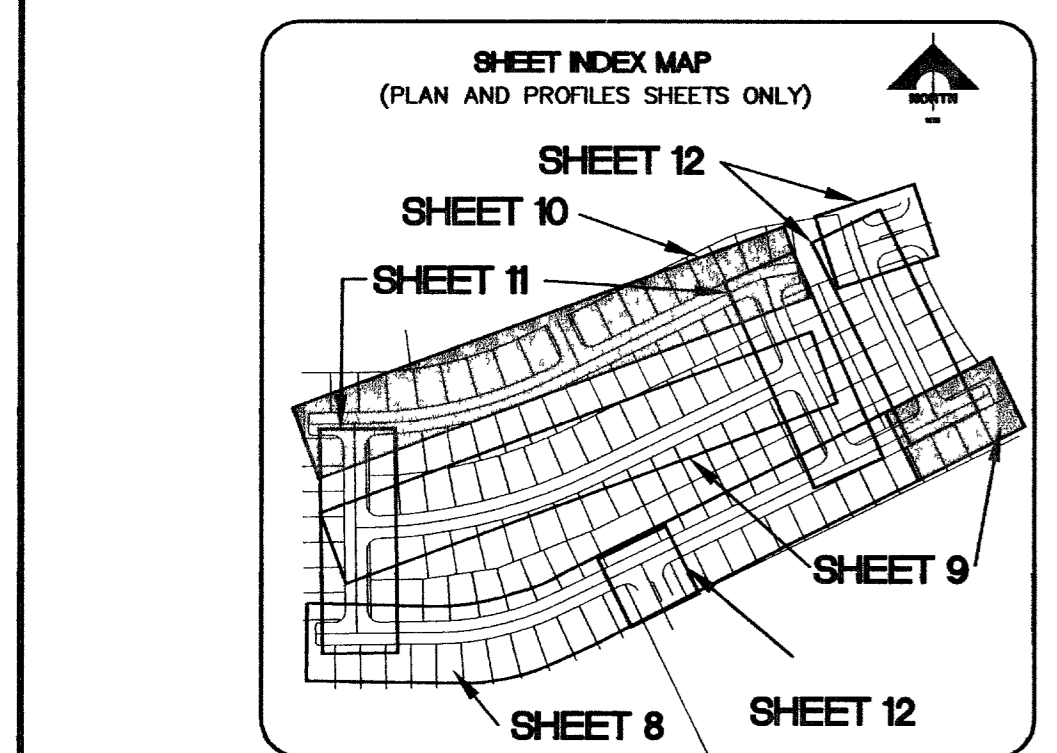
SEE SHEET 8 FOR CONTINUATION

SEE SHEET 11 FOR CONTINUATION

SEE SHEET 11 FOR CONTINUATION

BANDERA MOUNTAIN AVENUE (PRIVATE)

KENNEDY PEAK LANE (PRIVATE)



BASIS OF BEARINGS
N 88°21'18" E BEING THE SOUTH LINE OF THE SOUTHWEST QUARTER (SW 1/4) OF THE NORTHEAST QUARTER (NE 1/4) OF SECTION 15, T19S, R56E, A.D.M., AS SHOWN BY RECORD OF SURVEY ON FILE IN THE CLARK COUNTY, NEVADA RECORDER'S OFFICE IN FILE 124 OF SURVEYS AT PAGE 94.

BENCHMARK		
DESC.	NAVD 88 DATUM	NAVD 88 DATUM
BLV99	2860.79	871.971
13E4	(FEET)	(METERS)

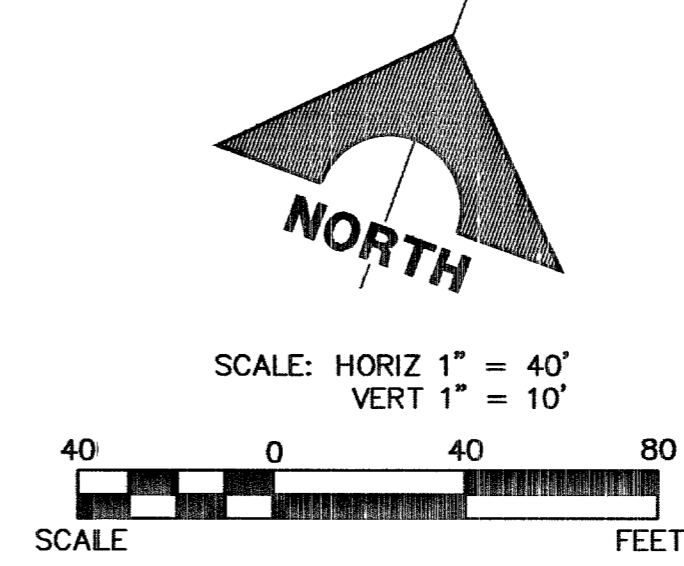
Call before you Dig. 1-800-227-2600

UnderGround 1-702-455-7511

1-702-229-6611

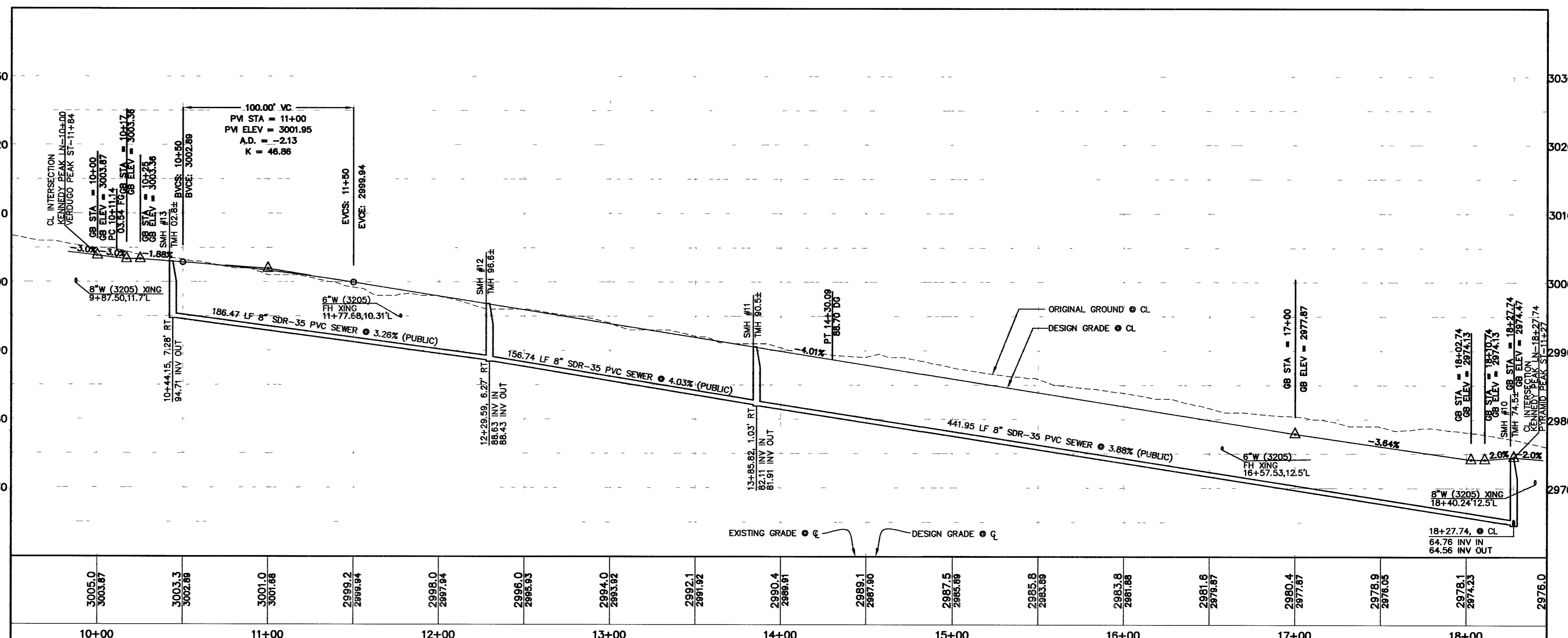
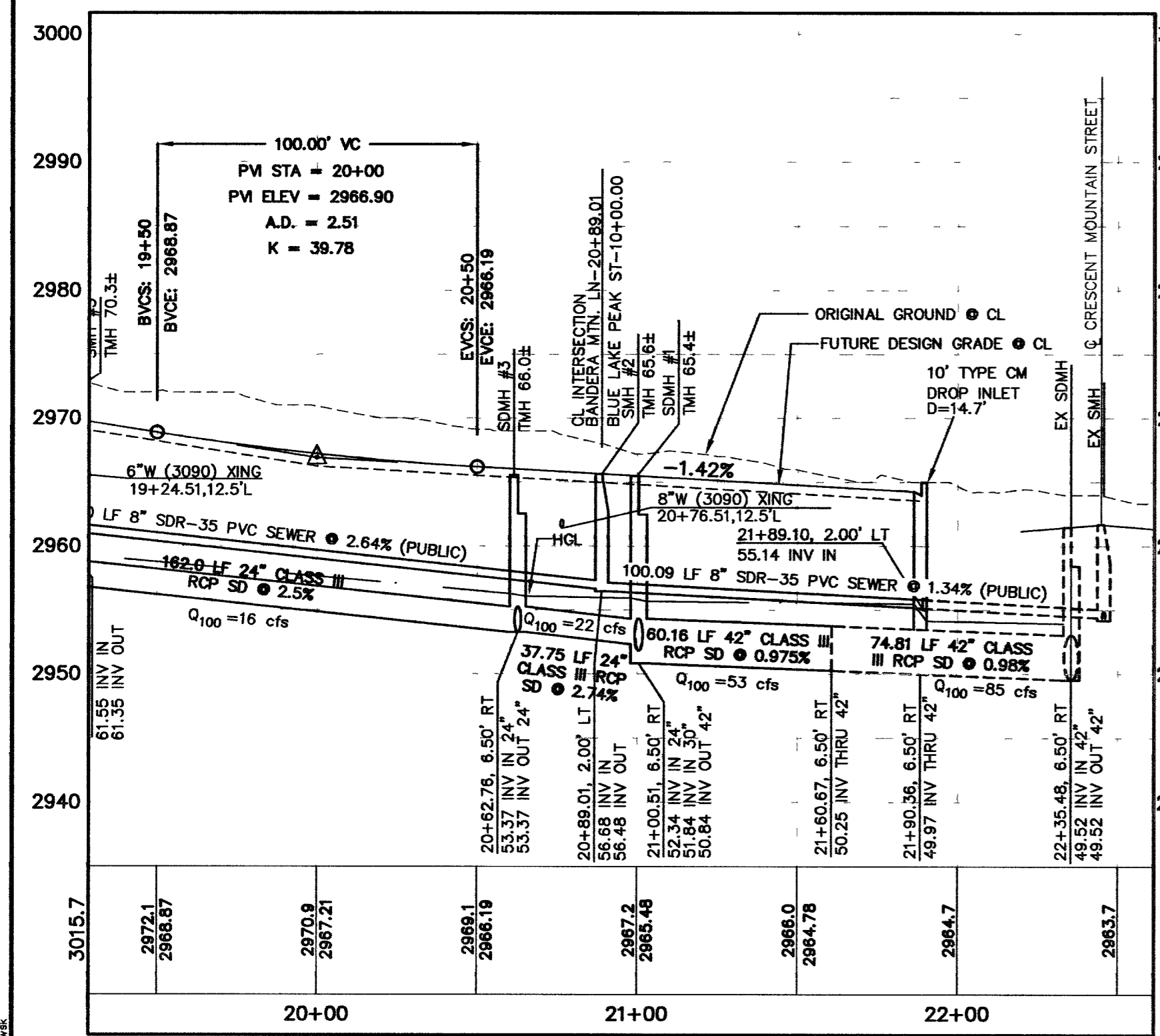
Call before you Dig. 1-800-227-2600

CALL BEFORE YOU DO OVERHEAD. 1-702-227-2929



APPROVED FOR CONSTRUCTION
LAS VEGAS VALLEY WATER DISTRICT
PROJ. # 111607

DESIGN: _____
DRAWN: _____
CHECK: _____
ISSUE DATE: _____
PLOT DATE: 01-26-06
PLOT TIME: 18:19:52



G.C. WALLACE, INC.
Engineers/Planners/Surveyors
1555 SOUTH RANBOW BLVD. LAS VEGAS, NEVADA 89146
TELEPHONE: (702) 864-2000 • FAX: (702) 804-2399
E: Northern_Terrace\Unit4\Gcw\mns\N104c08.dwg

MERITAGE CORPORATION
NORTHERN TERRACE - UNIT 4
BANDERA MOUNTAIN AVENUE AND
KENNEDY PEAK LANE PLAN AND PROFILE

JOB NO. 819.002.X1