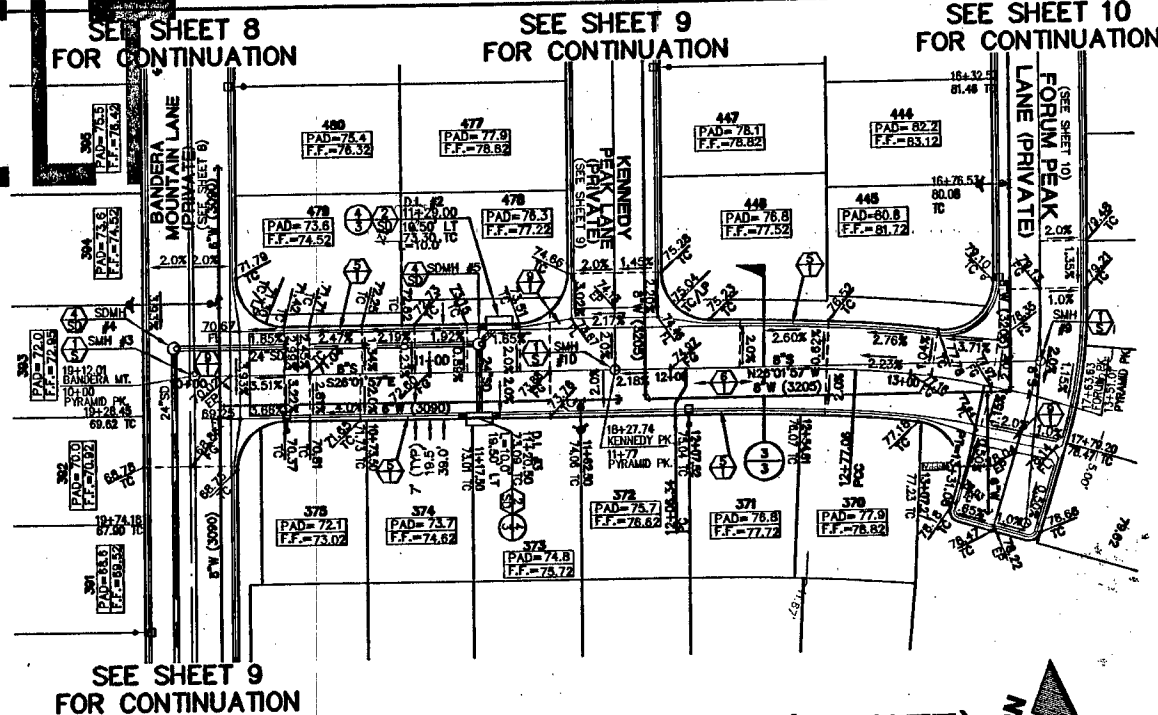
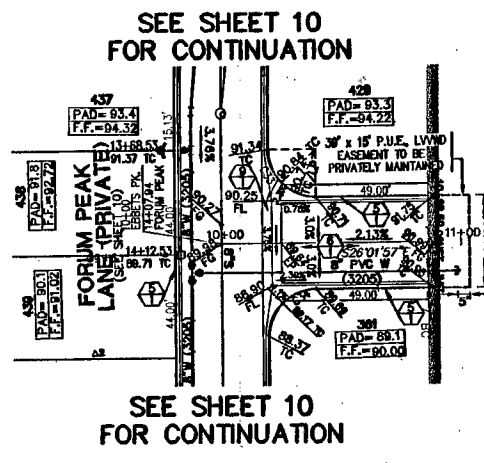
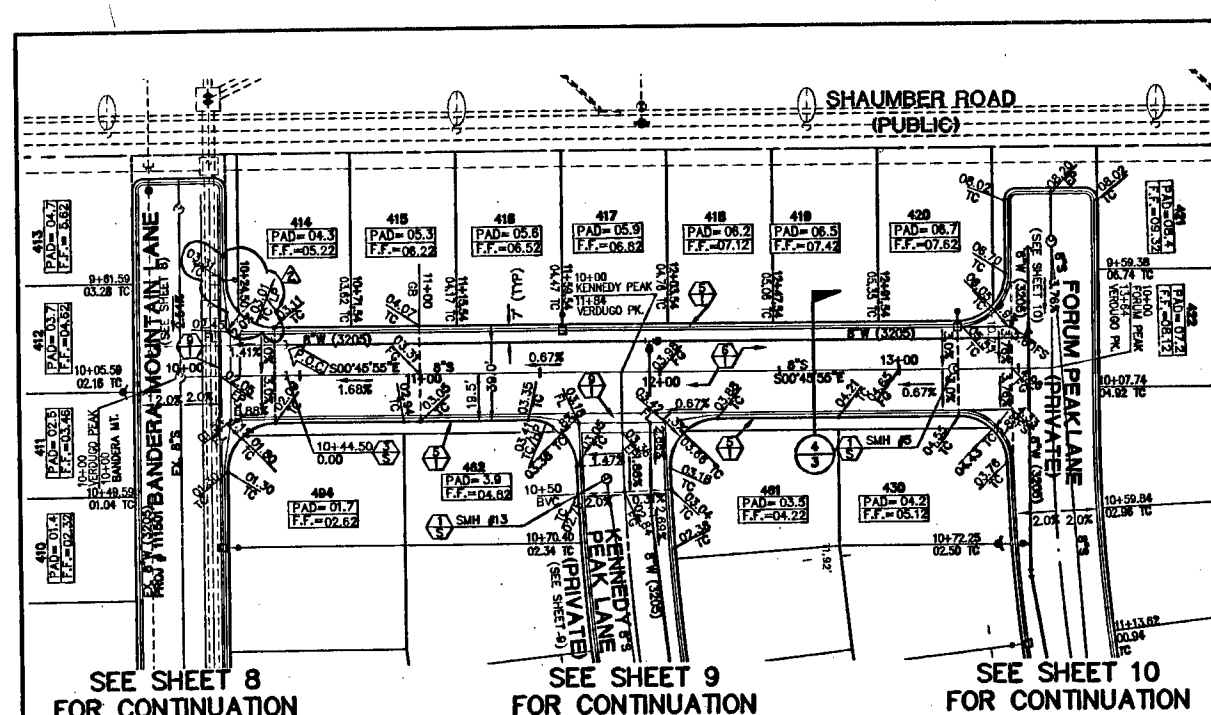


AS BUILT

FOR EX. SHAUMBER ROAD IMPROVEMENTS SEE CLIFFS EDGE / PROVIDENCE SHAUMBER ROAD CENTENAL TO GRAN TERRACE BY VTN, CLV #1074-4816-01, 1074-4816-02, 1074-4816-03, 1074-4816-04, 1074-4816-05, 1074-4816-06, 1074-4816-07, 1074-4816-08, 1074-4816-09, 1074-4816-10, 1074-4816-11, 1074-4816-12, 1074-4816-13, 1074-4816-14, 1074-4816-15, 1074-4816-16, 1074-4816-17, 1074-4816-18, 1074-4816-19, 1074-4816-20, 1074-4816-21, 1074-4816-22, 1074-4816-23, 1074-4816-24, 1074-4816-25, 1074-4816-26, 1074-4816-27, 1074-4816-28, 1074-4816-29, 1074-4816-30, 1074-4816-31, 1074-4816-32, 1074-4816-33, 1074-4816-34, 1074-4816-35, 1074-4816-36, 1074-4816-37, 1074-4816-38, 1074-4816-39, 1074-4816-40, 1074-4816-41, 1074-4816-42, 1074-4816-43, 1074-4816-44, 1074-4816-45, 1074-4816-46, 1074-4816-47, 1074-4816-48, 1074-4816-49, 1074-4816-50, 1074-4816-51, 1074-4816-52, 1074-4816-53, 1074-4816-54, 1074-4816-55, 1074-4816-56, 1074-4816-57, 1074-4816-58, 1074-4816-59, 1074-4816-60, 1074-4816-61, 1074-4816-62, 1074-4816-63, 1074-4816-64, 1074-4816-65, 1074-4816-66, 1074-4816-67, 1074-4816-68, 1074-4816-69, 1074-4816-70, 1074-4816-71, 1074-4816-72, 1074-4816-73, 1074-4816-74, 1074-4816-75, 1074-4816-76, 1074-4816-77, 1074-4816-78, 1074-4816-79, 1074-4816-80, 1074-4816-81, 1074-4816-82, 1074-4816-83, 1074-4816-84, 1074-4816-85, 1074-4816-86, 1074-4816-87, 1074-4816-88, 1074-4816-89, 1074-4816-90, 1074-4816-91, 1074-4816-92, 1074-4816-93, 1074-4816-94, 1074-4816-95, 1074-4816-96, 1074-4816-97, 1074-4816-98, 1074-4816-99, 1074-4816-100



SEE SHEET 8 FOR CONTINUATION

SEE SHEET 9 FOR CONTINUATION

SEE SHEET 10 FOR CONTINUATION

SEE SHEET 10 FOR CONTINUATION

SEE SHEET 9 FOR CONTINUATION

SEE SHEET 9 FOR CONTINUATION

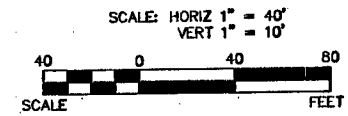
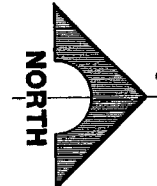
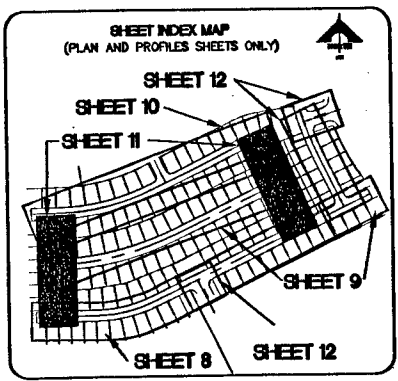
SEE SHEET 10 FOR CONTINUATION

FOR EXISTING IMPROVEMENTS SEE NORTHERN TERRACE UNIT 1 IMPROVEMENT PLANS by GCW WALLACE, INC JOB NO. 819.002.X08 CLV DWG NO. 10744891-1

VERDUGO PEAK STREET (PRIVATE)

EBBETS PEAK STREET (PRIVATE)

PYRAMID PEAK STREET (PRIVATE)



BASIS OF BEARINGS
N 88°21'10\"/>

DESC.	NAVD 88 DATUM	NAVD 83 DATUM
BV08 13E4 Rivet and Plate in Concrete Cylinder at the Northwest Corner of Hualapai Way and Farm Road.	2860.79 (FEET)	871.971 (METERS)

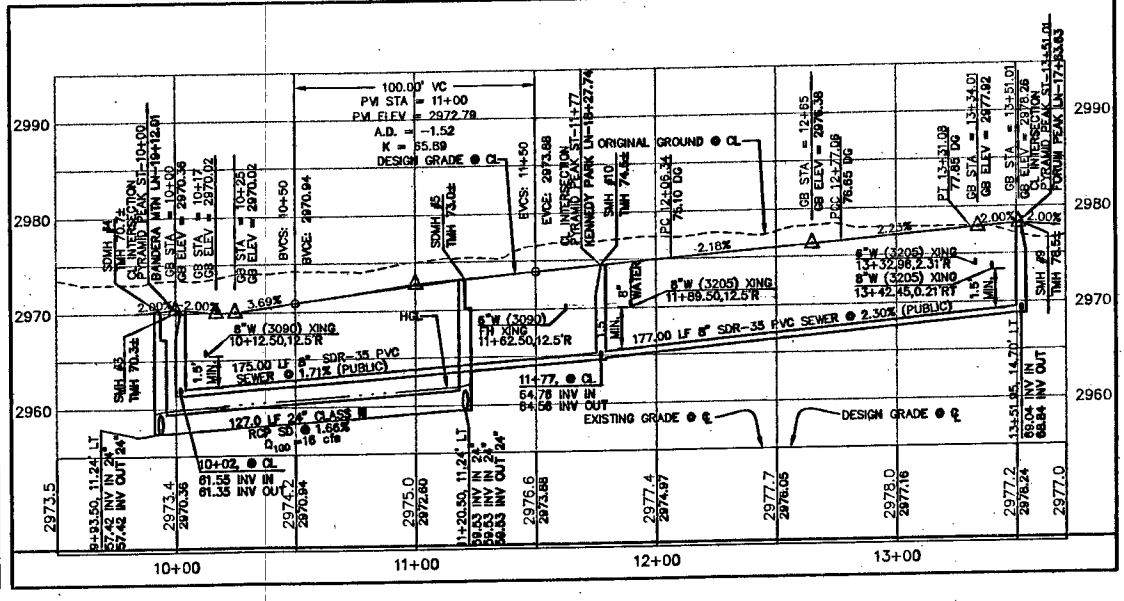
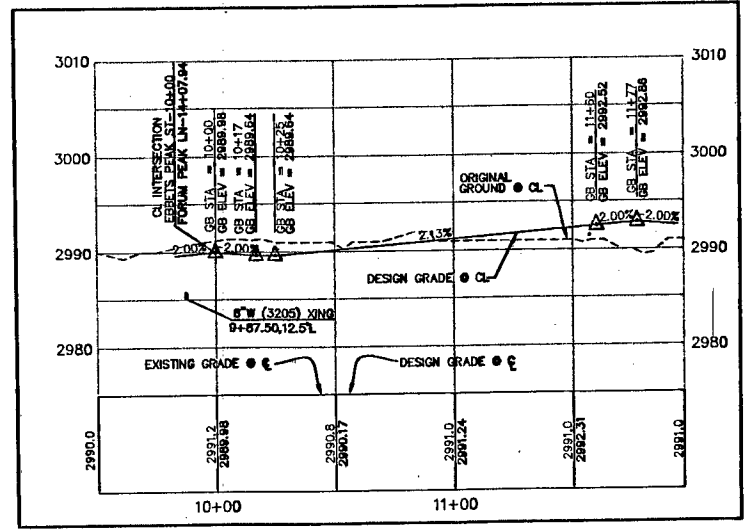
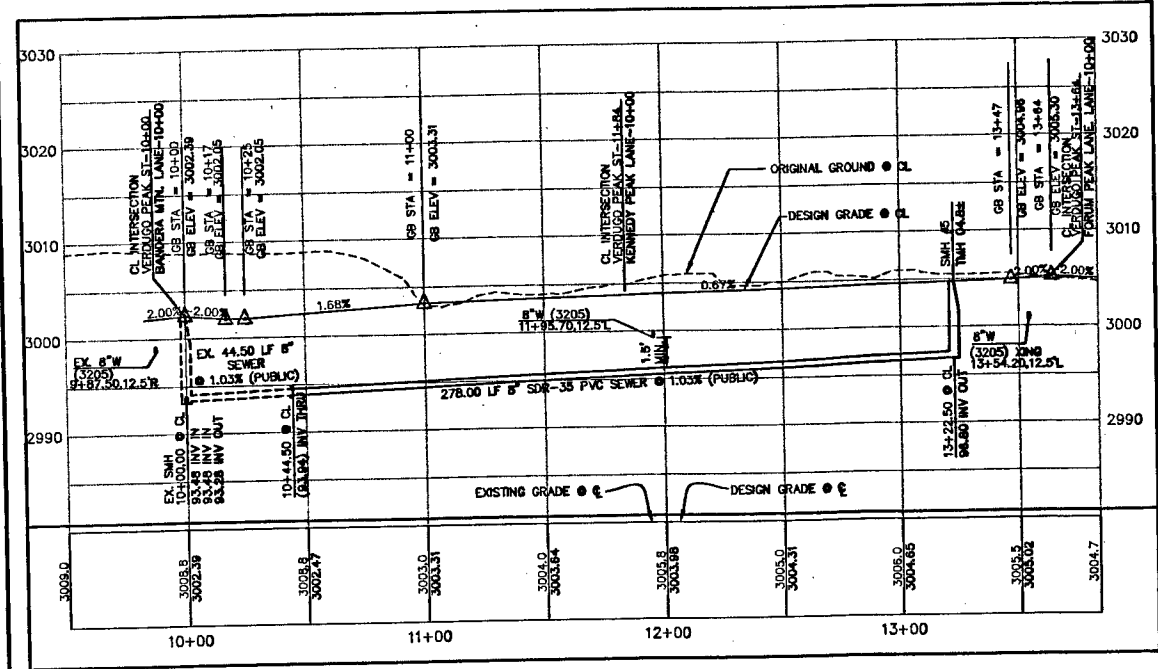
NOTE:
ALL PRIVATE STREETS ARE P.U.E., PUBLIC SEWER EASEMENTS, AND PUBLIC DRAINAGE EASEMENTS TO BE PRIVATELY MAINTAINED BY THE HOMEOWNERS ASSOCIATION.

Call before you Dig.
1-702-455-7511
1-702-229-6611

Call before you Dig.
1-800-227-2600

Call before you Dig.
1-702-227-2929

APPROVED FOR CONSTRUCTION
6-15-06
LAS VEGAS VALLEY WATER DISTRICT
PROJ # 111607



AS BUILT

DATE: 11/21/06
PLOT DATE: 08/29/06
PLOT TIME: 08:09:50

DESIGN: G.C. WALLACE, INC.
CHECK: J. WALLACE
ISSUE DATE: 6-15-06
PLOT DATE: 08-29-06
PLOT TIME: 08:09:50

G.C. WALLACE, INC.
Engineers/Planners/Surveyors
1555 SOUTH RAINBOW BLVD., LAS VEGAS, NEVADA 89146
TELEPHONE: (702) 804-2000 • FAX: (702) 804-2286
11 Northern Terrace, Santa Vepa, NV 89145

MERTAGE CORPORATION
NORTHERN TERRACE - UNIT 4
VERDUGO PEAK STREET, EBBETS PEAK STREET
AND PYRAMID PEAK STREET PLAN AND PROFILE
DRAWING
C-11
JOB NO. 819.002.X1
11 OF 15 SHEETS

CLV DRAWING NO. 10744891-4