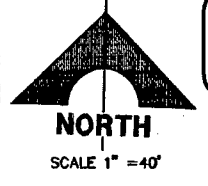


AS BUILT

BENCHMARK		
DESC.	NAVD 88 DATUM	NAVD 83 DATUM
IRVING AND PLATE IN CONCRETE CYLINDER AT THE NORTHWEST CORNER OF HUALAPAI WAY AND FARM ROAD.	2880.79 (FEET)	871.971 (METERS)

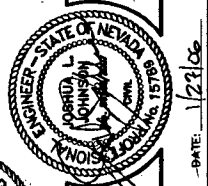
NOTE: THIS PROJECT PLAN APPROVAL IS CONTINGENT ON - 111501 NORTHERN TERRACE UNIT 1 PROVIDENCE

PLAN APPROVAL



NOTE:
SEWER AVERAGE DAILY FLOWS = 134 LOTS X 250 GPD/ERU = 33,500 GPD
PEAK FLOWS = 3.4 X 33,500 = 113,900 GPD

Call before you Dig.
1-800-227-2600
NEVADA SOURCE ALERT 1993



NOTES:

- ALL SEWER/STORM DRAINS CROSSING WATER LINES MUST CONFORM TO SECTION 2.19 OF THE UNIFORM DESIGN AND CONSTRUCTION STANDARDS FOR POTABLE WATER SYSTEMS (UDACS) FOR WATER AND STORM MAIN CROSSINGS AND CLEARANCES.
- INSTALL PIPELINE MARKER BALLS IN TRENCH ABOVE EACH HORIZONTAL ELBOW FITTINGS, PER UDACS PLATE NO. 27.
- ADJUST EXISTING WATER VALVE BOX TO FINISHED GRADE PER UDACS PLATE NO. 8. VALVE SHALL BE ACCESSIBLE AT ALL TIMES.

SEWER CONNECTION NOTE

ONE OR MORE SEGMENTS OF THE DOWNSTREAM SEWER SYSTEM THAT WILL SERVE THIS PROJECT HAS NOT BEEN COMPLETED AND/OR ACCEPTED FOR MAINTENANCE BY THE CITY OF LAS VEGAS. ANY WORK DONE ON THIS PROJECT PRIOR TO THE COMPLETION AND/OR ACCEPTANCE OF THE DOWNSTREAM SEWER SYSTEM(S) SHALL BE DONE AT THE DEVELOPER'S OWN RISK. THE CITY OF LAS VEGAS RESERVES THE RIGHT TO PREVENT THE PHYSICAL CONNECTION OF THIS PROJECT INTO THE DOWNSTREAM SEWER SYSTEM UNTIL ALL SEGMENTS HAVE BEEN COMPLETED AND ACCEPTED FOR MAINTENANCE, OR UNTIL SUCH TIME AS THEY ARE DEEMED AVAILABLE FOR SERVICE.

CONDITIONAL APPROVAL OF VALVED OUTLET (6" AND LARGER)

THE WATER PLANS SHOW ONE OR MORE VALVED OUTLETS EXTENDING OUT OF PAVED AREAS. INSTALLATIONS OF THESE OUTLETS IS ACCEPTABLE HOWEVER, IF THE OUTLETS ARE INCORRECTLY LOCATED OR NOT USED FOR ANY REASON WHEN THE PROPERTY IS ACTUALLY DEVELOPED, THE DEVELOPER SHALL ABANDON THE OUTLETS AT THE CONNECTION TO THE ACTIVE MAIN IN ACCORDANCE WITH THE DISTRICT'S STANDARDS, AND AT THE DEVELOPER'S EXPENSE. APPROVAL OF THE VALVED OUTLET DOES NOT PROVIDE OR IMPLY A WATER COMMITMENT.

NOTE:

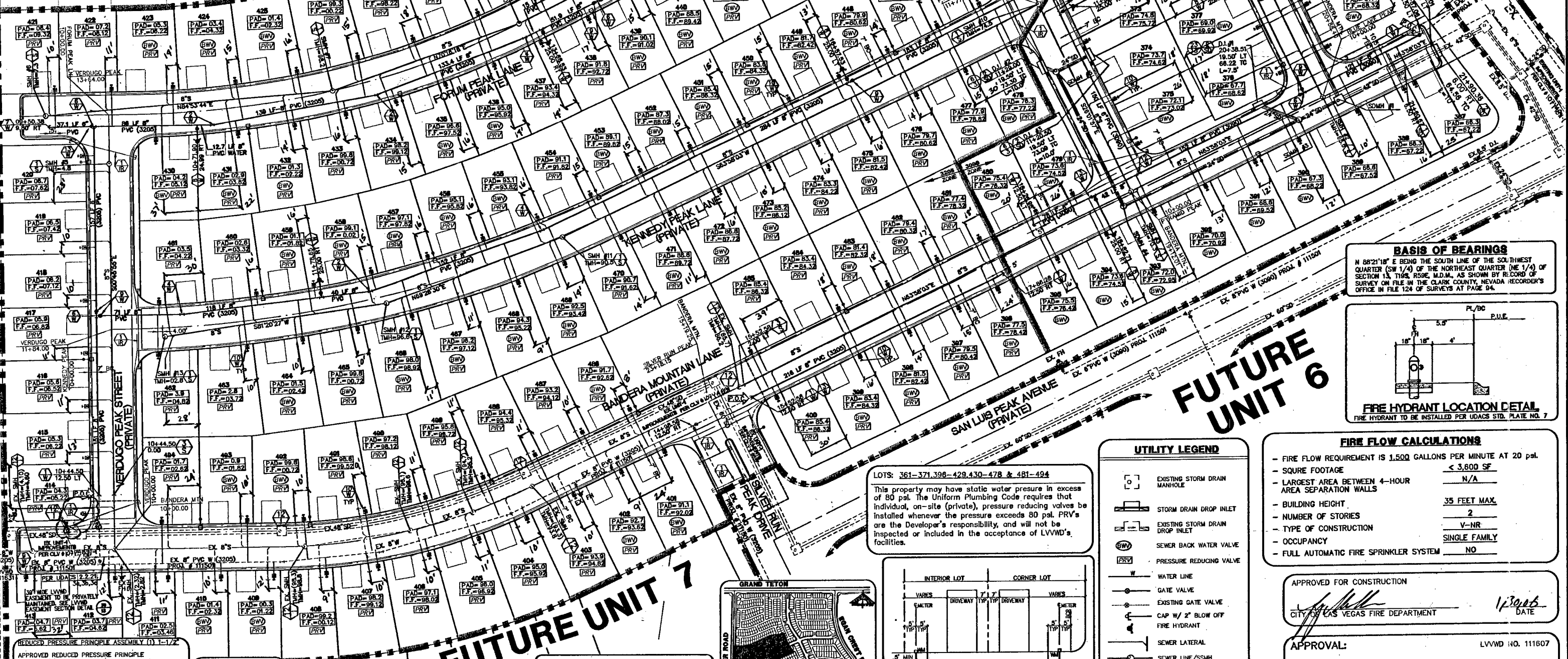
- ALL PRIVATE STREETS ARE P.U.E., PUBLIC SEWER EASEMENTS, AND PUBLIC DRAINAGE EASEMENTS TO BE PRIVATELY MAINTAINED BY THE HOMEOWNERS ASSOCIATION
- QUANTITY ESTIMATES ARE SHOWN ON SHEET C-3.

WATER MAIN JOINT DEFLECTION (PVC 4"-24")

PVC PIPE SHALL BE DEFLECTED AT THE JOINT ONLY. THE MAXIMUM ALLOWABLE DEFLECTION SHALL BE ONE (1) DEGREE PER JOINT WITH A MINIMUM RADIUS OF CURVATURE OF 1,150 FEET, PER UDACS 2.06.01 AND 2.06.02.

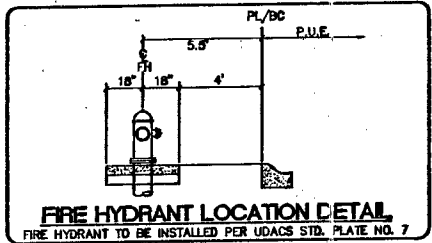
FOR CHANGES IN DIRECTION EXCEEDING THE MAXIMUM ALLOWABLE JOINT DEFLECTION, FITTINGS SHALL BE USED.

FUTURE UNIT 5



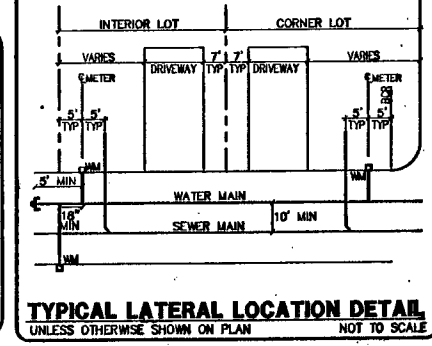
BASIS OF BEARINGS

N 88°21'10" E BEING THE SOUTH LINE OF THE SOUTHWEST QUARTER (SW 1/4) OF THE NORTHEAST QUARTER (NE 1/4) OF SECTION 13, T10S, R09E, M.D.M., AS SHOWN BY RECORD OF SURVEY ON FILE IN THE CLARK COUNTY, NEVADA RECORDER'S OFFICE IN FILE 124 OF SURVEYS AT PAGE 94.



LOTS: 361-371, 396-429, 430-478 & 481-494

This property may have static water pressure in excess of 80 psi. The Uniform Plumbing Code requires that individual, on-site (private), pressure-reducing valves be installed whenever the pressure exceeds 80 psi. PRVs are the Developer's responsibility, and will not be inspected or included in the acceptance of LVVWD's facilities.



UTILITY LEGEND

	EXISTING STORM DRAIN MANHOLE
	STORM DRAIN DROP INLET
	EXISTING STORM DRAIN DROP INLET
	SEWER BACK WATER VALVE
	PRESSURE REDUCING VALVE
	WATER LINE
	GATE VALVE
	EXISTING GATE VALVE
	CAP W/ 1/2" BLOW OFF
	FIRE HYDRANT
	SEWER LATERAL
	SEWER LINE/SSMH
	EXISTING SEWER MANHOLE
	CONCRETE DRIVEWAY
	PAD ELEVATION
	EXISTING STREET LIGHT

FIRE FLOW CALCULATIONS

- FIRE FLOW REQUIREMENT IS 1,500 GALLONS PER MINUTE AT 20 psi	
- SQUARE FOOTAGE	< 3,600 SF
- LARGEST AREA BETWEEN 4-HOUR AREA SEPARATION WALLS	N/A
- BUILDING HEIGHT	35 FEET MAX.
- NUMBER OF STORIES	2
- TYPE OF CONSTRUCTION	V-NR
- OCCUPANCY	SINGLE FAMILY
- FULL AUTOMATIC FIRE SPRINKLER SYSTEM	NO

APPROVED FOR CONSTRUCTION
CITY OF LAS VEGAS FIRE DEPARTMENT
DATE: 1/30/06

APPROVAL: [Signature]
LVVWD NO. 111607
LAS VEGAS VALLEY WATER DISTRICT
DATE: 6/20/06

APPROVED REDUCED PRESSURE PRINCIPLE ASSEMBLY(S) SHALL BE INSTALLED PER THE UDACS PLATE NO. 11A. NO WATER SHALL BE TAKEN FROM A SERVICE REQUIRING BACKFLOW PREVENTION UNTIL THE REDUCED PRESSURE ASSEMBLY HAS BEEN SUCCESSFULLY TESTED BY THE LVVWD.

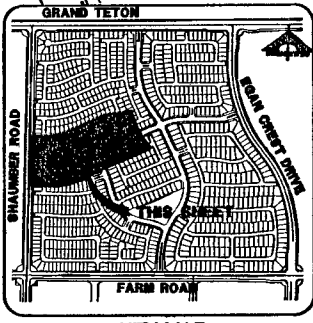
ANY BLOCK WALL OR OTHER FENCE MATERIAL SHALL BE DESIGNED AND CONSTRUCTED AROUND THE OUTSIDE OF THE EASEMENT(S) TO ALLOW THE DIRECT ACCESS FROM THE ADJACENT RIGHT-OF-WAY.

EASEMENTS SHALL BE CLEARLY MARKED OR STAKED PRIOR TO THE START OF CONSTRUCTION. 9 2 5 2 5

1-702-227-2929

Service laterals for lots: 401-414 & 485-494 will be tapped on existing main by Owner's contractor under direction of LVVWD.

FOR EXISTING IMPROVEMENTS SEE NORTHERN TERRACE UNIT 1 IMPROVEMENT PLANS BY GCW WALLACE, INC JOB NO. 819.002.X08 CLV DWG NO. 107Y4891-1



DESIGN: [Blank]
CHECK: [Blank]
ISSUE DATE: [Blank]
ISSUE EDITION: [Blank]
PLAT DATE: 01-27-06
PLAT TIME: 13:21:28
SCALE: 1" = 40'

G.C. WALLACE, INC.
Engineers/Planners/Surveyors
111501 NORTHERN TERRACE UNIT 1
LAS VEGAS, NV 89135
TELEPHONE: (702) 804-2000 FAX: (702) 804-2289
E-MAIL: gwallace@wallaceinc.com

MERTAGE CORPORATION
NORTHERN TERRACE - UNIT 4
UTILITY PLAN
DRAWING C-4
4 OF 15 SHEETS

JOB NO. 881002.X1