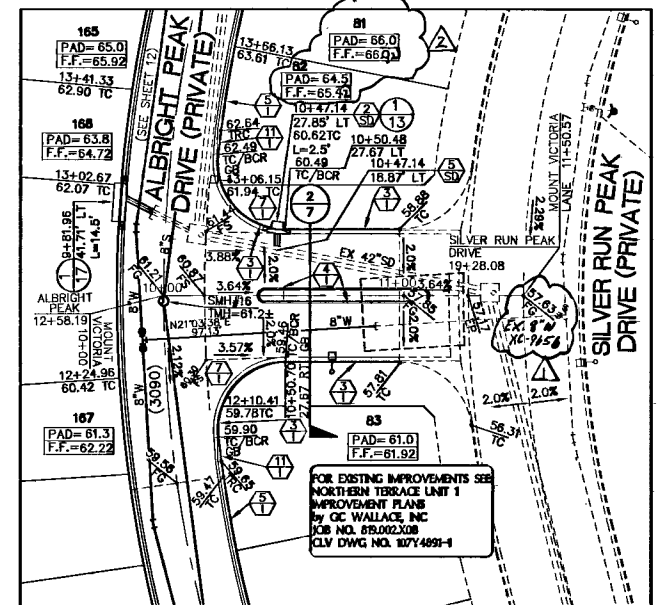
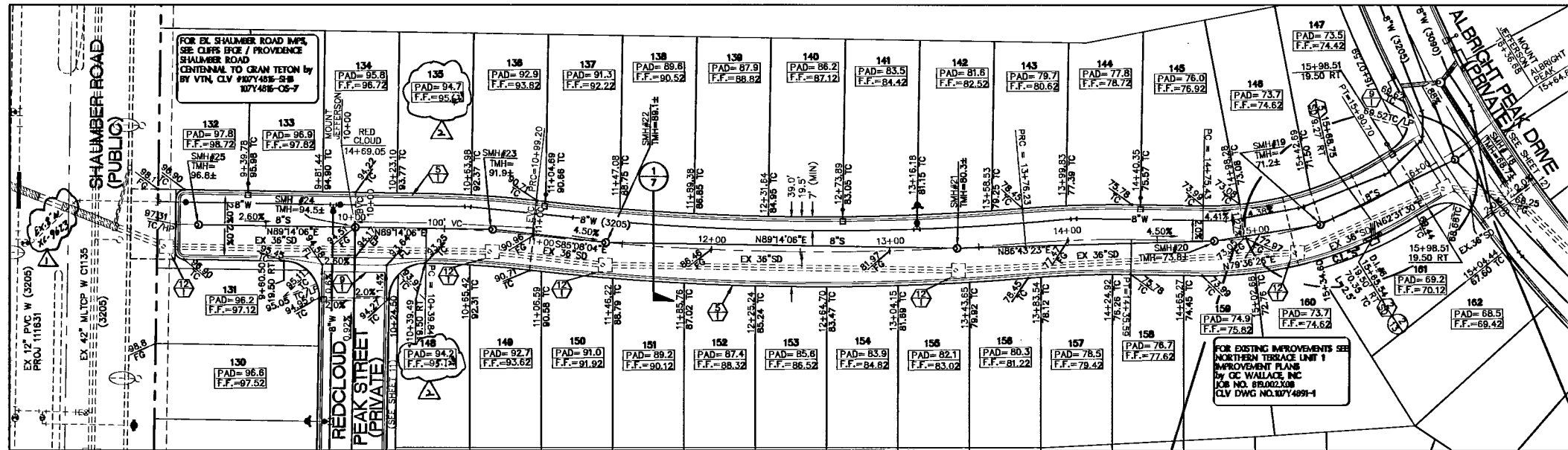


SEE SHEET 12

SEE SHEET 12

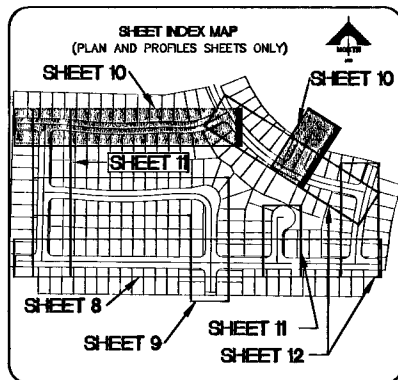


SEE SHEET 11

MOUNT JEFFERSON AVENUE (PRIVATE)

SEE SHEET 12

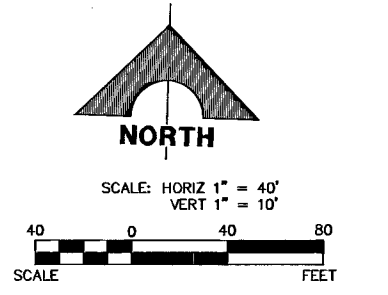
MOUNT VICTORIA LANE (PRIVATE)



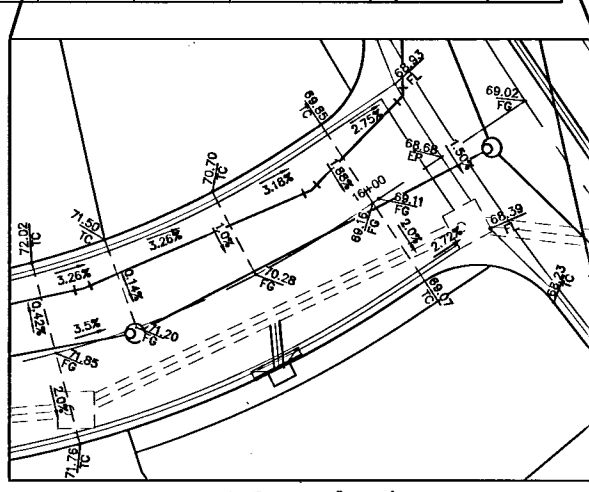
NOTE TO CONTRACTOR
 CONTRACTOR TO VERIFY ALL EXISTING SEWER & STORM DRAIN SIZES, INVERTS AND LOCATIONS. IF A DISCREPANCY EXISTS, CONTRACTOR TO NOTIFY THE ENGINEER PRIOR TO CONSTRUCTION.

BASIS OF BEARINGS
 N 88°21'06" E BEING THE SOUTH LINE OF THE SOUTHWEST QUARTER (SW 1/4) OF THE NORTHEAST QUARTER (NE 1/4) OF SECTION 13, T18S, R99E, M.D.M., AS SHOWN BY RECORD OF SURVEY ON FILE IN THE CLARK COUNTY, NEVADA RECORDER'S OFFICE IN FILE 124 OF SURVEYS AT PAGE 94.

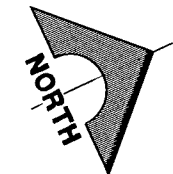
DESC.	NAVD 88 DATUM	NAVD 88 DATUM
BLV98 RIVET AND PLATE IN CONCRETE CYLINDER AT THE NORTHWEST CORNER OF HUALAPAI WAY AND FARM ROAD.	2860.79 (FEET)	871.971 (METERS)



NOTE:
 ALL PRIVATE STREETS ARE P.U.E., PUBLIC SEWER EASEMENTS, AND PUBLIC DRAINAGE EASEMENTS TO BE PRIVATELY MAINTAINED BY THE HOMEOWNERS ASSOCIATION.



SCALE: HORIZ 1" = 20'

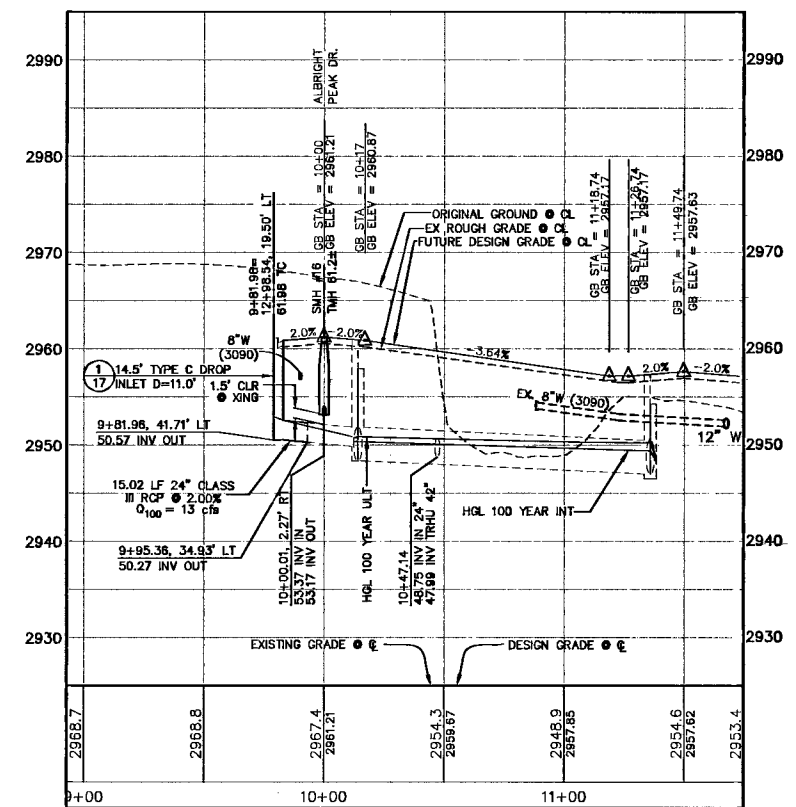
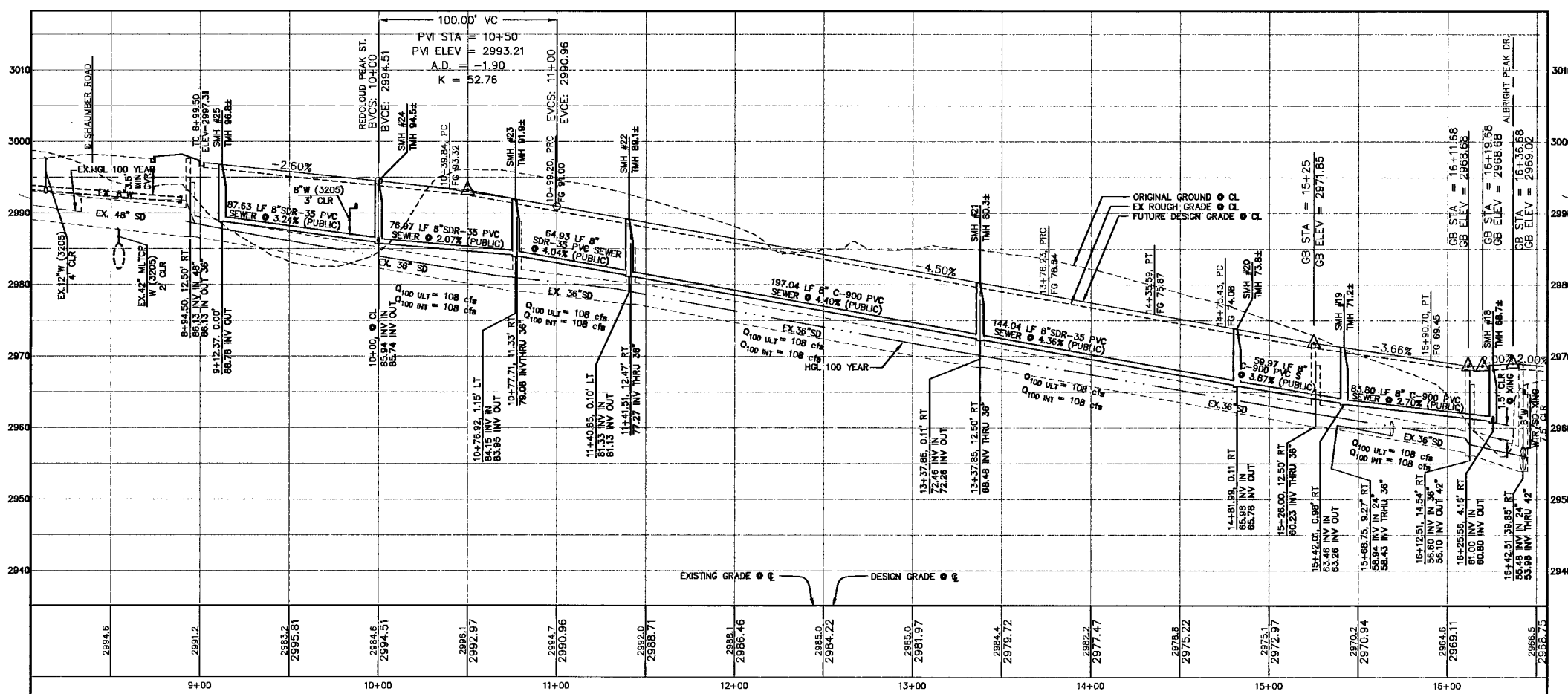


APPROVAL: *Steve [Signature]* LVVMD NO. 111600
 LAS VEGAS VALLEY WATER DISTRICT DATE: 7-25-06

Call before you Dig. 1-702-455-7511 1-702-229-6611

Call before you Dig. 1-800-227-2600

Call before you Dig. 1-702-227-2929



93088 95209 116419

CLV DRAWING NO. 10744891-2

STATE OF NEVADA
 ENGINEER
 G. WALLACE, INC.
 Engineers/Planners/Surveyors
 1445 MOUNT VICTORIA LANE, SUITE 200, LAS VEGAS, NV 89102
 TELEPHONE: (702) 804-2000 • FAX: (702) 804-2289
 E-Mail: gwallace@wallaceinc.com
 14 Northern Terrace, Unit 200, Las Vegas, NV 89102

DRAWING: MERITAGE HOMES - UNIT 2
 NORTH TERRACE AVENUE
 MOUNT JEFFERSON AVENUE
 AND MOUNT VICTORIA LANE PLAN AND PROFILE

DATE: 6/21/06
 ISSUE DATE: 7/25/06
 PLOT DATE: 7/25/06
 PLOT TIME: 11:20:03

DRAWING: C-10
 10 OF 17 SHEETS