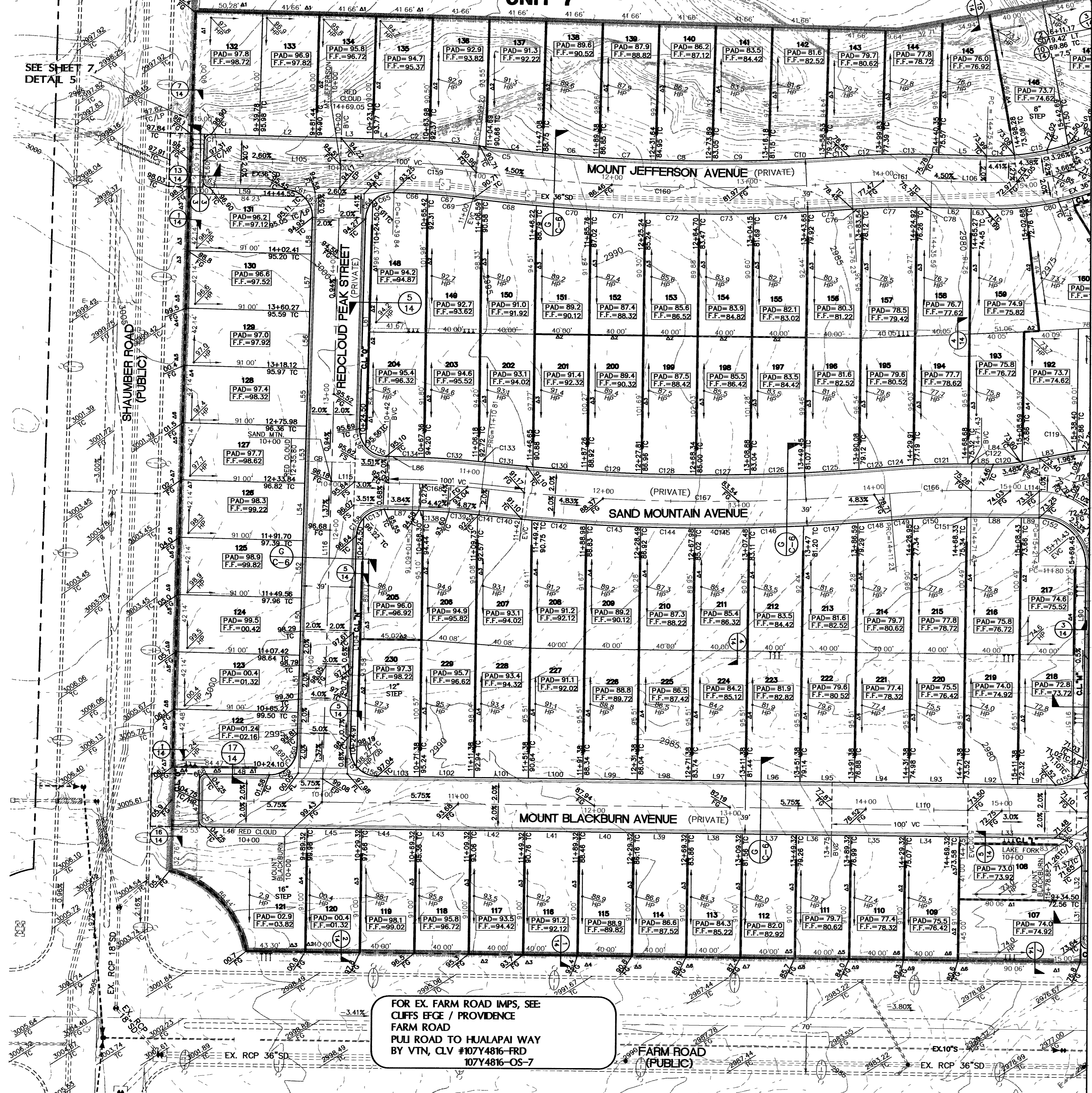


FOR EX. SHAMBER ROAD IMPS, SEE CLIFFS EDGE / PROVIDENCE SHAMBER ROAD CENTENNIAL TO GRAN TETON BY VTN, CLV #107Y4816-SB 107Y4816-OS-7

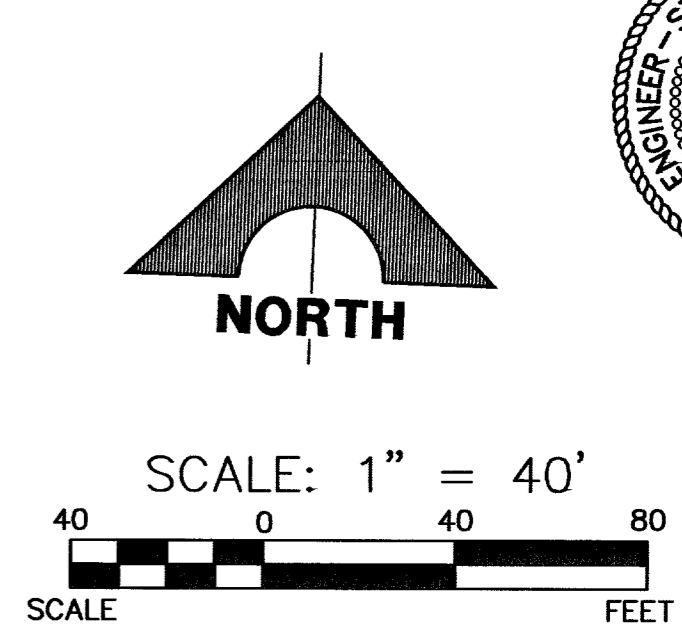
FUTURE UNIT 7



FOR EX. FARM ROAD IMPS, SEE CLIFFS EDGE / PROVIDENCE FARM ROAD PUJI ROAD TO HUALAPAI WAY BY VTN, CLV #107Y4816-FRD 107Y4816-OS-7

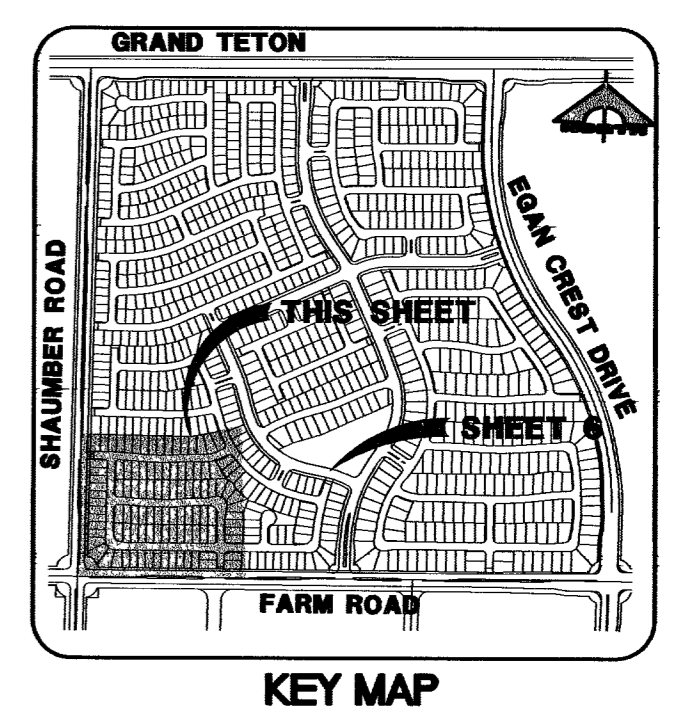
CURVE	DELTA	LENGTH	RADIUS	TANGENT
C1	90°00'00"	7.85'	5.00'	5.00'
C2	278°21'	24.93'	619.50'	12.47'
C3	321°47'	36.36'	619.50'	18.19'
C4	144°05'	41.79'	1380.50'	20.90'
C5	013°29'	5.42'	1380.50'	2.71'
C6	143°52'	41.71'	1380.50'	20.86'
C7	143°44'	41.67'	1380.50'	20.84'
C8	143°43'	41.68'	1380.50'	20.84'
C9	143°48'	41.68'	1380.50'	20.84'
C10	144°01'	41.77'	1380.50'	20.89'
C11	0°43'27"	17.45'	1380.50'	8.72'
C12	215°13'	24.37'	619.50'	12.18'
C13	324°55'	36.93'	619.50'	18.47'
C14	0°31'52"	20.83'	181.00'	10.33'
C15	124°12'56"	40.09'	181.00'	20.13'
C16	134°31'11"	43.34'	181.00'	21.77'
C54	90°00'00"	7.85'	5.00'	5.00'
C55	48°35'25"	16.96'	20.00'	9.03'
C56	41°24'35"	14.45'	20.00'	7.56'
C57	90°00'00"	7.85'	5.00'	5.00'
C58	90°00'00"	7.85'	5.00'	5.00'
C59	41°24'35"	14.45'	20.00'	7.56'
C60	47°24'04"	16.65'	20.00'	8.84'
C61	41°24'35"	14.45'	20.00'	7.56'
C62	48°35'25"	16.96'	20.00'	9.03'
C63	90°00'00"	7.85'	5.00'	5.00'
C64	41°24'35"	14.45'	20.00'	7.56'
C65	48°35'25"	16.96'	20.00'	9.03'
C66	22°28'40"	25.10'	580.50'	12.55'
C67	313°32'	32.68'	580.50'	16.34'
C68	137°19'	40.18'	1419.50'	20.09'
C69	071°09'	7.49'	1419.50'	3.75'
C70	137°05'	40.09'	1419.50'	20.05'
C71	136°57'	40.00'	1419.50'	20.02'
C72	136°53'	40.00'	1419.50'	20.00'
C73	136°53'	40.01'	1419.50'	20.01'
C74	136°58'	40.04'	1419.50'	20.02'
C75	120°00'	33.03'	1419.50'	16.52'
C76	041°54'	7.07'	580.50'	3.54'
C77	357°25'	40.03'	580.50'	20.03'
C78	131°09'	19.32'	580.50'	9.16'
C79	74°21'	29.91'	220.00'	14.98'
C80	90°13'	35.02'	220.00'	17.55'
C81	160°53'	61.56'	220.00'	30.98'
C82	342°11'	30.05'	50.00'	15.49'
C83	231°07'	2.20'	50.00'	1.10'
C84	113°15'	20.42'	100.00'	10.20'
C85	342°10'	40.03'	619.50'	20.02'
C86	015°44'	2.84'	619.50'	1.42'
C87	048°28'	20.87'	1480.50'	10.43'
C88	147°03'	19.29'	619.50'	9.65'
C89	133°08'	40.11'	1480.50'	20.05'
C90	132°59'	40.04'	1480.50'	20.02'
C91	132°54'	40.01'	1480.50'	20.01'
C92	132°53'	40.00'	1480.50'	20.00'
C93	132°57'	40.03'	1480.50'	20.01'
C94	133°04'	40.08'	1480.50'	20.04'
C95	122°09'	35.38'	1480.50'	17.69'
C96	342°24'	40.08'	619.50'	20.05'
C97	028°32'	4.78'	619.50'	2.39'
C98	021°15'	7.43'	619.50'	3.72'
C99	48°35'25"	16.96'	20.00'	9.03'
C100	41°24'35"	14.45'	20.00'	7.56'
C101	48°35'25"	16.96'	20.00'	9.03'
C102	41°24'35"	14.45'	20.00'	7.56'
C103	48°35'25"	16.96'	20.00'	9.03'
C104	41°24'35"	14.45'	20.00'	7.56'
C105	48°35'25"	16.96'	20.00'	9.03'
C106	41°24'35"	14.45'	20.00'	7.56'
C107	48°35'25"	16.96'	20.00'	9.03'
C108	41°24'35"	14.45'	20.00'	7.56'
C109	48°35'25"	16.96'	20.00'	9.03'
C110	41°24'35"	14.45'	20.00'	7.56'
C111	48°35'25"	16.96'	20.00'	9.03'
C112	41°24'35"	14.45'	20.00'	7.56'
C113	48°35'25"	16.96'	20.00'	9.03'
C114	41°24'35"	14.45'	20.00'	7.56'
C115	48°35'25"	16.96'	20.00'	9.03'
C116	41°24'35"	14.45'	20.00'	7.56'
C117	48°35'25"	16.96'	20.00'	9.03'
C118	41°24'35"	14.45'	20.00'	7.56'
C119	48°35'25"	16.96'	20.00'	9.03'
C120	41°24'35"	14.45'	20.00'	7.56'
C121	48°35'25"	16.96'	20.00'	9.03'
C122	41°24'35"	14.45'	20.00'	7.56'
C123	48°35'25"	16.96'	20.00'	9.03'
C124	41°24'35"	14.45'	20.00'	7.56'
C125	48°35'25"	16.96'	20.00'	9.03'
C126	41°24'35"	14.45'	20.00'	7.56'
C127	48°35'25"	16.96'	20.00'	9.03'
C128	41°24'35"	14.45'	20.00'	7.56'
C129	48°35'25"	16.96'	20.00'	9.03'
C130	41°24'35"	14.45'	20.00'	7.56'
C131	48°35'25"	16.96'	20.00'	9.03'
C132	41°24'35"	14.45'	20.00'	7.56'
C133	48°35'25"	16.96'	20.00'	9.03'
C134	41°24'35"	14.45'	20.00'	7.56'
C135	48°35'25"	16.96'	20.00'	9.03'
C136	41°24'35"	14.45'	20.00'	7.56'
C137	48°35'25"	16.96'	20.00'	9.03'
C138	41°24'35"	14.45'	20.00'	7.56'
C139	48°35'25"	16.96'	20.00'	9.03'
C140	41°24'35"	14.45'	20.00'	7.56'
C141	48°35'25"	16.96'	20.00'	9.03'
C142	41°24'35"	14.45'	20.00'	7.56'
C143	48°35'25"	16.96'	20.00'	9.03'
C144	41°24'35"	14.45'	20.00'	7.56'
C145	48°35'25"	16.96'	20.00'	9.03'
C146	41°24'35"	14.45'	20.00'	7.56'
C147	48°35'25"	16.96'	20.00'	9.03'
C148	41°24'35"	14.45'	20.00'	7.56'
C149	48°35'25"	16.96'	20.00'	9.03'
C150	41°24'35"	14.45'	20.00'	7.56'
C151	48°35'25"	16.96'	20.00'	9.03'
C152	41°24'35"	14.45'	20.00'	7.56'
C153	48°35'25"	16.96'	20.00'	9.03'
C154	41°24'35"	14.45'	20.00'	7.56'
C155	48°35'25"	16.96'	20.00'	9.03'
C156	41°24'35"	14.45'	20.00'	7.56'
C157	48°35'25"	16.96'	20.00'	9.03'
C158	41°24'35"	14.45'	20.00'	7.56'
C159	48°35'25"	16.96'	20.00'	9.03'
C160	41°24'35"	14.45'	20.00'	7.56'
C161	48°35'25"	16.96'	20.00'	9.03'
C162	41°24'35"	14.45'	20.00'	7.56'
C163	48°35'25"	16.96'	20.00'	9.03'
C164	41°24'35"	14.45'	20.00'	7.56'
C165	48°35'25"	16.96'	20.00'	9.03'
C166	41°24'35"	14.45'	20.00'	7.56'
C167	48°35'25"	16.96'	20.00'	9.03'
C168	41°24'35"	14.45'	20.00'	7.56'

LINE	LENGTH	BEARING
L1	35.30'	N89°14'06"E
L2	41.66'	N89°14'06"E
L3	41.66'	N89°14'06"E
L4	16.74'	N89°14'06"E
L5	35.08'	N89°14'06"E
L6	4.76'	N89°14'06"E
L30	29.00'	N88°20'44"E
L31	30.00'	S01°39'16"E
L32	26.00'	S01°39'16"E
L33	70.06'	S88°20'44"W
L34	40.00'	S88°20'44"W
L35	40.00'	S88°20'44"W
L36	40.00'	S88°20'44"W
L37	40.00'	S88°20'44"W
L38	40.00'	S88°20'44"W
L39	40.00'	S88°20'44"W
L40	40.00'	S88°20'44"W
L41	40.00'	S88°20'44"W
L42	40.00'	S88°20'44"W
L43	40.00'	S88°20'44"W
L44	40.00'	S88°20'44"W
L45	40.00'	S88°20'44"W
L46	74.60'	S88°20'44"W
L47	29.00'	N01°39'16"W
L48	46.39'	S88°20'44"W
L49	26.38'	N00°45'55"W
L50	42.14'	N00°45'55"W
L51	42.14'	N00°45'55"W
L52	42.14'	N00°45'55"W
L53	42.14'	N00°45'55"W
L54	42.14'	N00°45'55"W
L55	42.14'	N00°45'55"W
L56	42.14'	N00°45'55"W
L57	42.14'	N00°45'55"W
L58	27.14'	N00°45'55"W
L59	56.00'	N89°14'06"E
L60	20.00'	S00°45'54"E
L61	154.24'	N00°45'55"W
L62	29.68'	N89°14'06"E
L63	10.16'	N89°14'06"E
L62	18.46'	N09°52'22"E
L83	38.62'	N76°49'06"E
L84	1.28'	N76°49'06"E
L85	15.92'	S88°20'44"W
L86	20.66'	N89°14'06"E
L87	20.66'	N89°14'06"E
L88	37.00'	S88°20'44"W
L89	13.00'	S88°20'44"W
L90	141.00'	S01°39'16"E
L91	28.00'	S88°20'44"W
L92	40.00'	S88°20'44"W
L93	40.00'	S88°20'44"W
L94	40.00'	S88°20'44"W
L95	40.00'	S88°20'44"W
L96	40.00'	S88°20'44"W
L97	40.00'	S88°20'44"W
L98	40.00'	S88°20'44"W
L99	40.00'	S88°20'44"W
L100	40.00'	S88°20'44"W
L101	40.00'	S88°20'44"W
L102	40.00'	S88°20'44"W
L103	31.26'	S88°20'44"W
L104	156.19'	N00°45'55"W
L105	140.34'	N89°14'06"E
L106	39.84'	N89°14'06"E
L107	45.98'	S56°17'38"W
L108	149.74'	N24°26'55"E
L109	118.55'	N80°12'02"W
L110	1244.93'	S88°20'44"W
L111	157.23'	S01°39'16"E
L112	21.00'	S88°20'44"W
L113	281.00'	S01°39'16"E
L114	50.00'	S88°20'44"W
L115	60.17'	N89°14'06"E
L116	469.05'	N00°45'55"W



RETAINING WALL CONVERSION TABLE

NO. COURSES	HEIGHT
Δ2	1.33'
Δ3	2.00'
Δ4	2.67'
Δ5	3.33'
Δ6	4.00'
Δ7	4.67'
Δ8	5.33'
Δ9	6.00'
Δ10	6.67'
Δ11	7.33'
Δ12	8.00'
Δ13	8.67'



Call before you Dig. 1-702-455-7511

Call before you Dig. 1-702-229-6611

Call before you Dig. 1-800-227-2600

CALL BEFORE YOU DO OVERHEAD. 1-702-227-2929

BASIS OF BEARINGS

N 88°21'18" E BEING THE SOUTH LINE OF THE SOUTHWEST QUARTER (SW 1/4) OF THE NORTHEAST QUARTER (NE 1/4) OF SECTION 13, T19S, R9E, M.D.M., AS SHOWN BY RECORD OF SURVEY ON FILE IN THE CLARK COUNTY, NEVADA RECORDER'S OFFICE IN FILE 124 OF SURVEYS AT PAGE 94.

BENCHMARK

DESC.	NAVD 88 DATUM	NAVD 88 DATUM
BLV99 RIVET AND PLATE IN CONCRETE CYLINDER AT THE NORTHWEST CORNER OF HUALAPAI WAY AND FARM ROAD.	2860.79 (FEET)	871.971 (METERS)

DRAINAGE CERTIFICATION

I CERTIFY THAT THE GRADING PLAN IS IN CONFORMANCE WITH THE APPROVED DRAINAGE STUDY ON FILE AT THE CITY OF LAS VEGAS FOR THIS PROJECT (#DS3771).

JOHNSON R.P.E. 15789 107Y4816-OS-7 DATE 6/21/06

NOTE: 1. ALL PRIVATE STREETS ARE P.U.E., PUBLIC SEWER EASEMENTS, AND PUBLIC DRAINAGE EASEMENTS TO BE PRIVATELY MAINTAINED BY THE HOMEOWNERS ASSOCIATION. 2. QUANTITY ESTIMATES ARE SHOWN ON SHEET C-3.

STATE OF NEVADA ENGINEER JOHN WALLACE, INC. CIVIL ENGINEER LICENSE NO. 15789

DATE: 6/21/06

DESIGN: G.C. WALLACE, INC. ENGINEERS/PLANNERS/SURVEYORS
155 SOUTH RAINBOW BLVD., LAS VEGAS, NEVADA 89146
TELEPHONE: (702) 804-2000 • FAX: (702) 804-2959
E-mail: jwallace@wallaceinc.com

MERTAGE HOMES
NORTHERN TERRACE - UNIT 2
GRADING PLAN I

DRAWING C-5

93083

JOB NO. 89.002.009

DATE: 6/21/06

SCALE: 1" = 40'

RETAINING WALL CONVERSION TABLE

KEY MAP

Call before you Dig. 1-702-455-7511

Call before you Dig. 1-702-229-6611

Call before you Dig. 1-800-227-2600

CALL BEFORE YOU DO OVERHEAD. 1-702-227-2929

BASIS OF BEARINGS

BENCHMARK

DRAINAGE CERTIFICATION