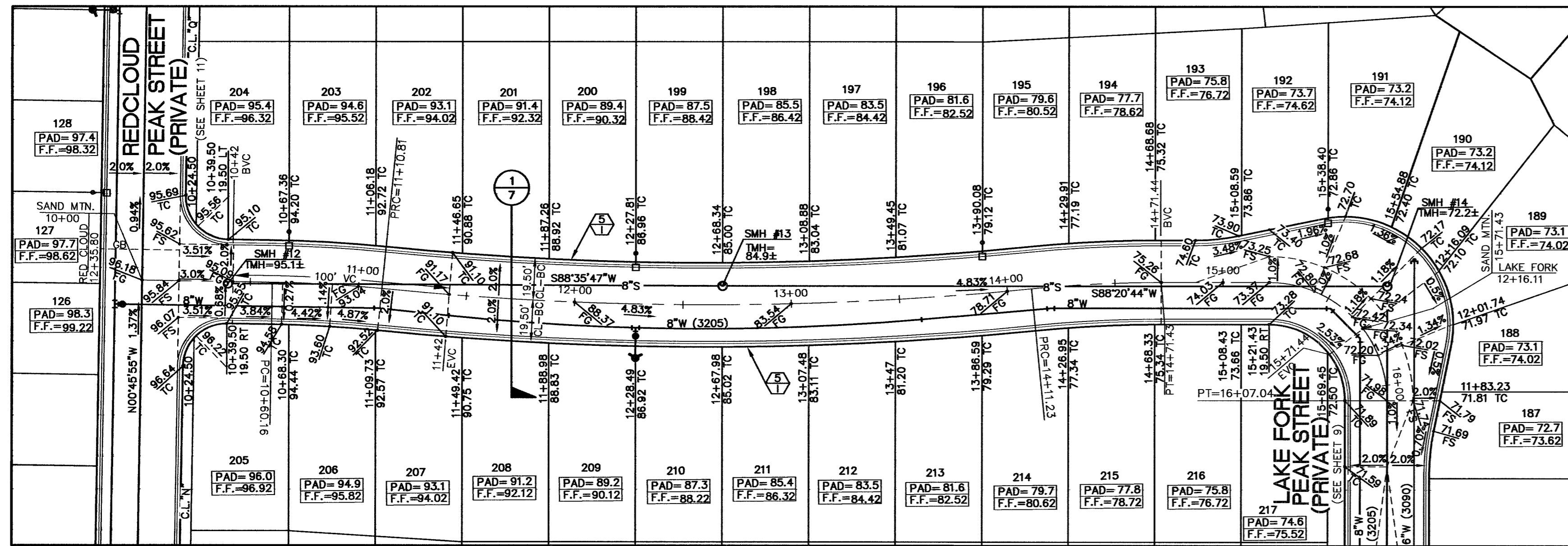


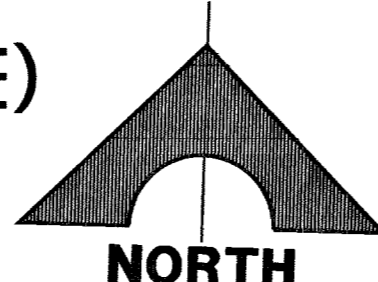
SEE SHEET 11



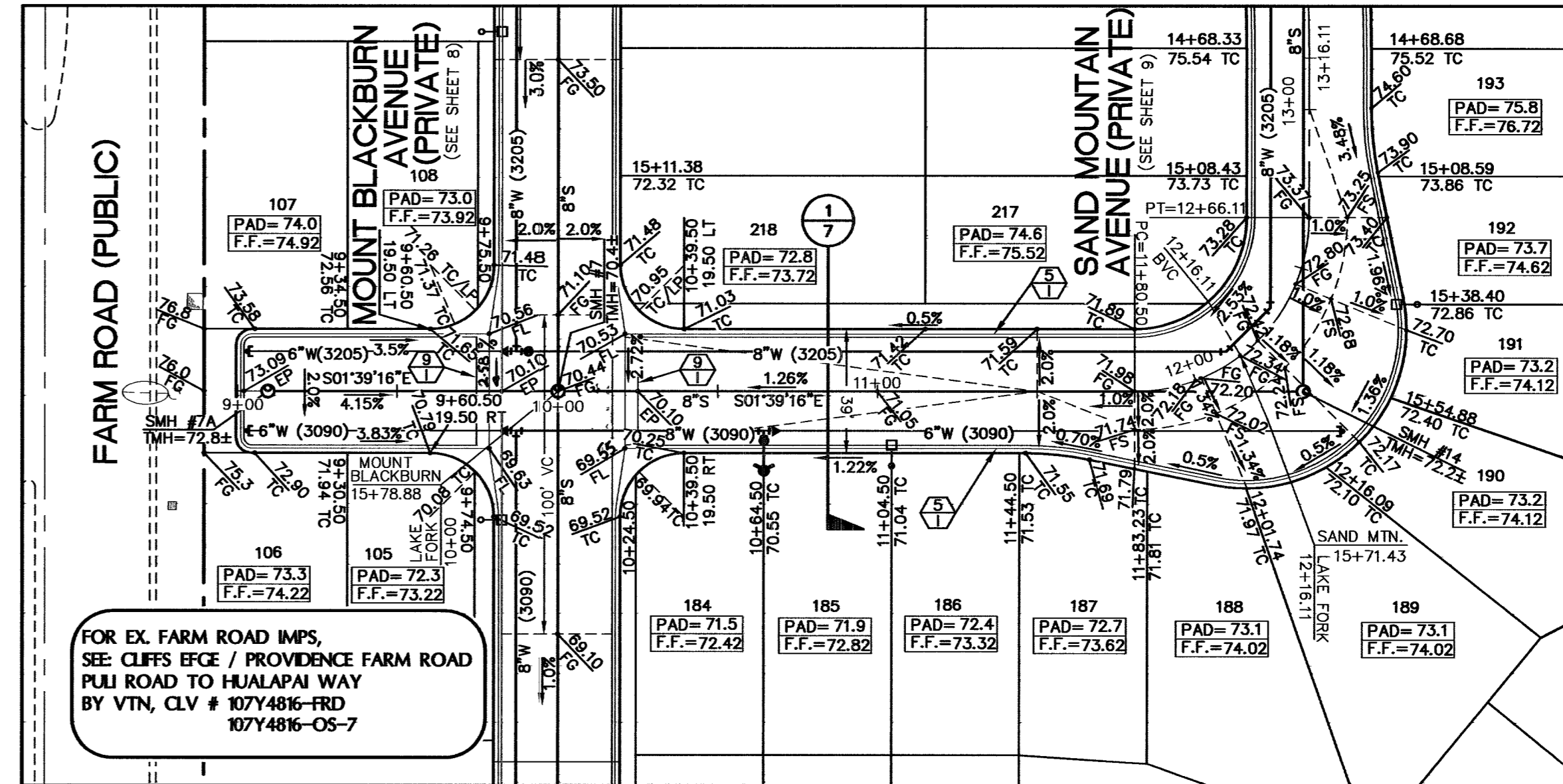
SEE SHEET 11

SEE RIGHT

### SAND MOUNTAIN AVENUE (PRIVATE)

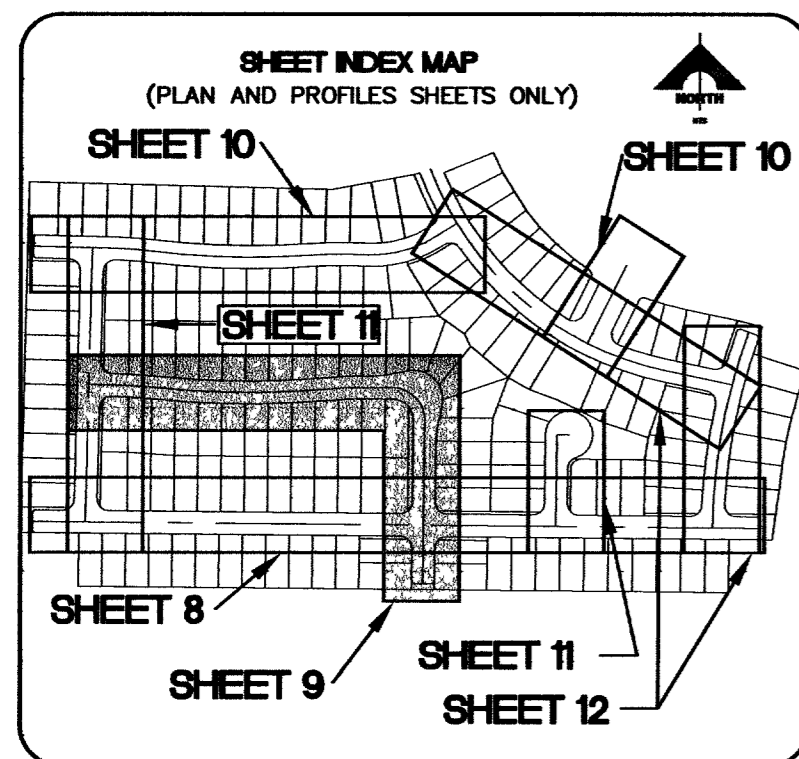
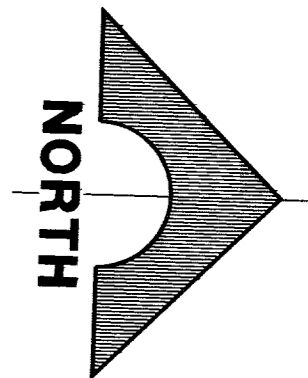


SEE SHEET 8



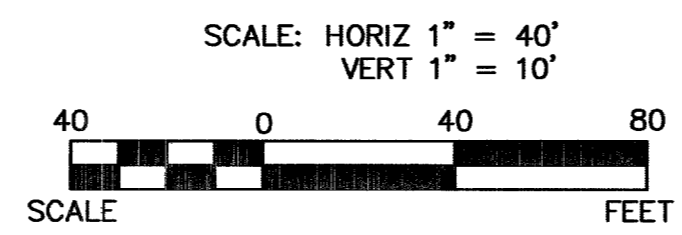
SEE SHEET 8

### LAKE FORK PEAK STREET (PRIVATE)



**BASIS OF BEARINGS**  
 N 88°21'18" E BEING THE SOUTH LINE OF THE SOUTHWEST QUARTER (SW 1/4) OF THE NORTHEAST QUARTER (NE 1/4) OF SECTION 13, T19S, R59E, M.D.M., AS SHOWN BY RECORD OF SURVEY ON FILE IN THE CLARK COUNTY, NEVADA RECORDER'S OFFICE IN FILE 124 OF SURVEYS AT PAGE 94.

BENCHMARK		
DESC.	NAVD 88 DATUM	NAVD 88 DATUM
8LV99 1.3E4 RIVET AND PLATE IN CONCRETE CYLINDER AT THE NORTHWEST CORNER OF HUALAPAI WAY AND FARM ROAD.	2860.79 (FEET)	871.971 (METERS)



**NOTE:**  
 ALL PRIVATE STREETS ARE P.U.E., PUBLIC SEWER EASEMENTS, AND PUBLIC DRAINAGE EASEMENTS TO BE PRIVATELY MAINTAINED BY THE HOMEOWNERS ASSOCIATION.

Call before you Dig. 1-800-227-2600

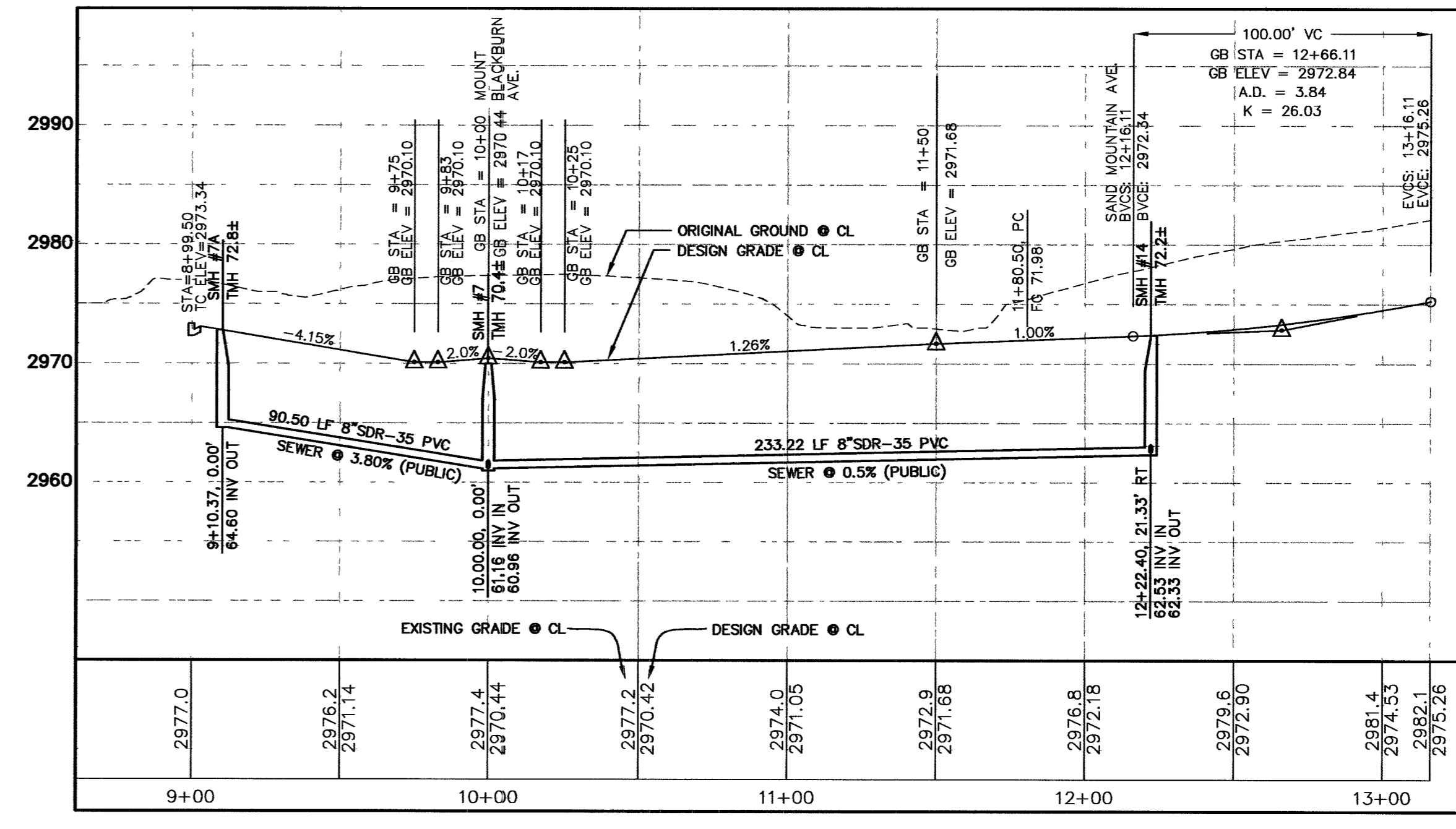
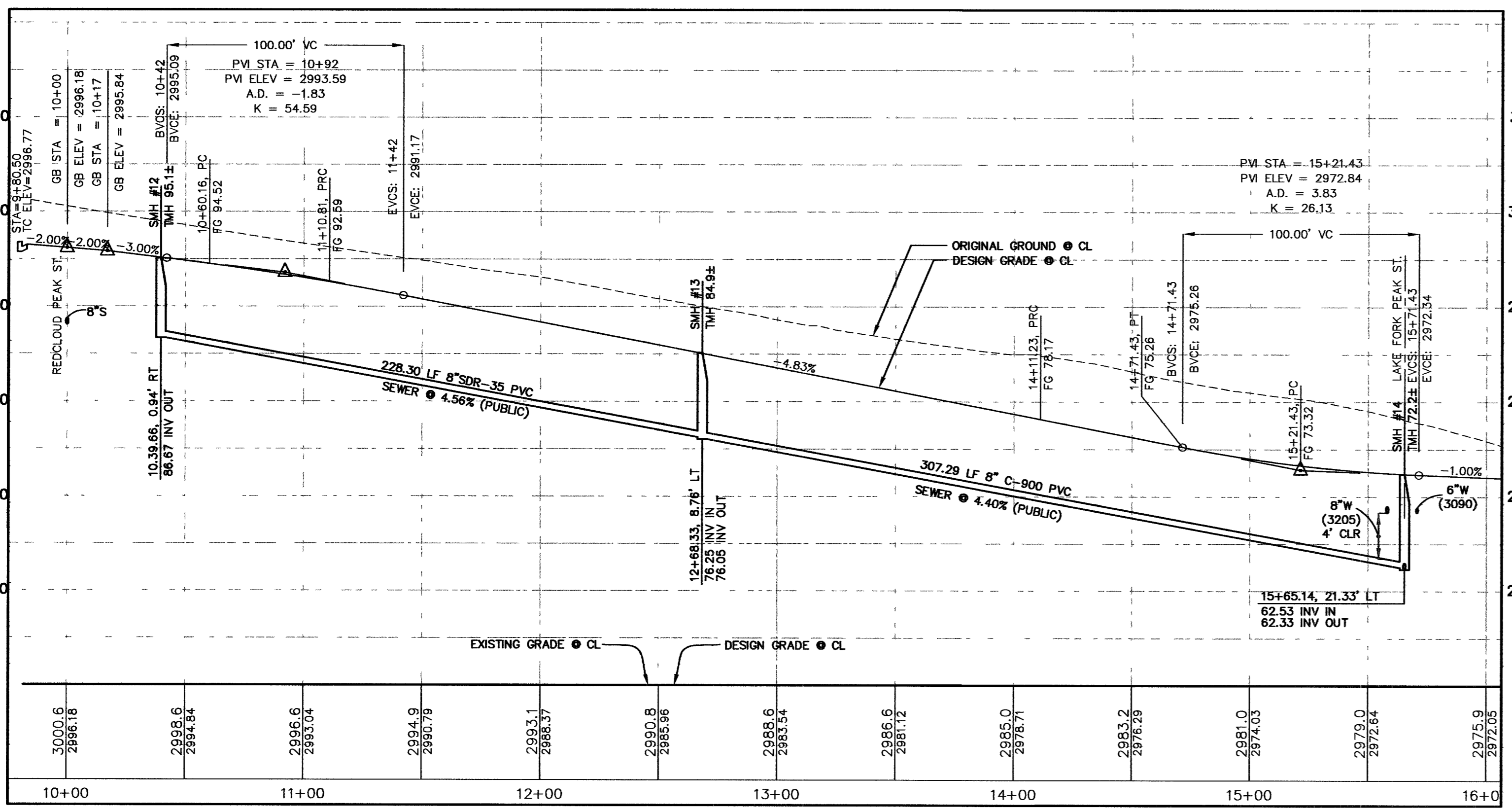
Call before you Dig. 1-800-227-2600

Call before you Dig. 1-800-227-2600

Call before you Dig. 1-800-227-2600

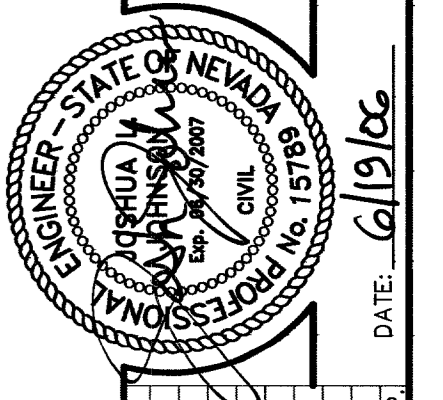
APPROVAL: \_\_\_\_\_ LVWD NO. 111600

LAS VEGAS VALLEY WATER DISTRICT \_\_\_\_\_ DATE \_\_\_\_\_



93087

CLV DRAWING NO. 10744991-2



DESIGN:	DRAWN:	CHECK:	ISSUE DATE:	ISSUE EDITOR:	PLOT DATE:	DATE:	TIME:	REV:	DATE:	DESCRIPTION:

G.C. WALLACE, INC.  
 Engineers/Planners/Surveyors  
 1555 SOUTH RAINBOW BLVD., LAS VEGAS, NEVADA 89148  
 TELEPHONE: (702) 844-2000 \* FAX: (702) 804-2299

MERITAGE HOMES  
 NORTHERN TERRACE - UNIT 2  
 SAND MOUNTAIN AVENUE AND  
 LAKE FORK PEAK PLAN AND PROFILE  
 DRAWING C-9  
 9 OF 17 SHEETS

JOB NO. 819.002.X09