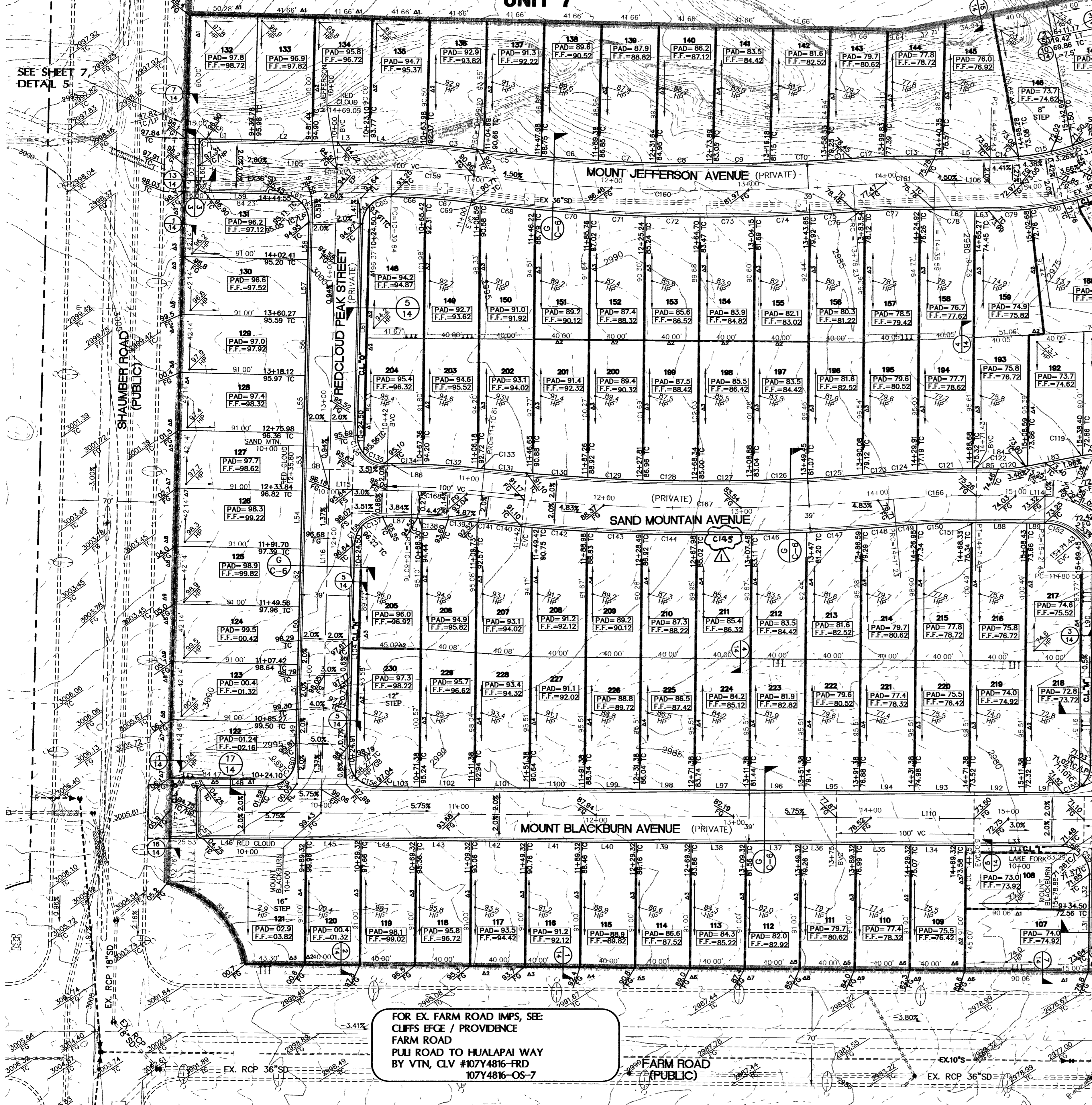


FOR EX. SHAUMBER ROAD IMPS, SEE CLIFFS EDGE / PROVIDENCE SHAUMBER ROAD CENTENNIAL TO GRAN TETON BY VTN, CLV #107Y4816-SH-B 107Y4816-OS-7

FUTURE UNIT 7



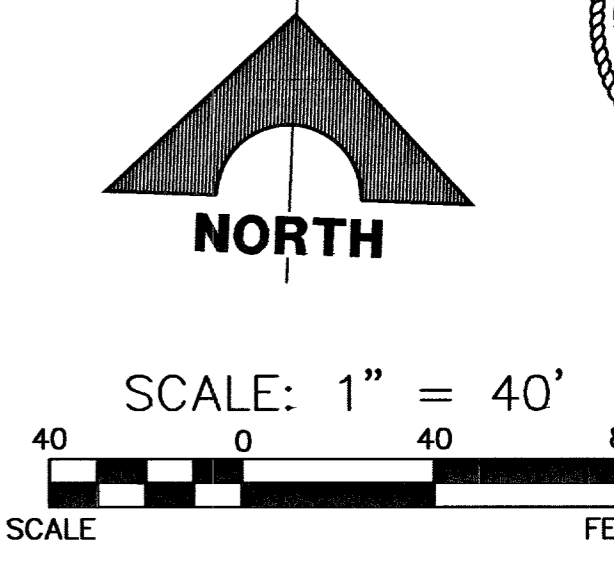
930834 93205

FOR EX. FARM ROAD IMPS, SEE CLIFFS EDGE / PROVIDENCE FARM ROAD PULI ROAD TO HUALAPAI WAY BY VTN, CLV #107Y4816-FRD 107Y4816-OS-7

CURVE	DELTA	LENGTH	RADIUS	TANGENT
C1	90°00'00"	7.85'	5.00'	5.00
C2	218°21'	24.93'	619.50'	12.47
C3	321°47'	36.36'	619.50'	18.19
C4	144°05'	41.79'	1380.50'	20.90
C5	013°29'	5.42'	1380.50'	2.71
C6	143°52'	41.71'	1380.50'	20.86
C7	143°46'	41.67'	1380.50'	20.84
C8	143°47'	41.68'	1380.50'	20.84
C9	143°48'	41.68'	1380.50'	20.84
C10	144°01'	41.77'	1380.50'	20.89
C11	043°27'	17.45'	1380.50'	8.72
C12	215°13'	24.57'	619.50'	12.18
C13	324°55'	36.93'	619.50'	18.17
C14	63°12'	20.63'	181.00'	10.33
C15	124°125'	40.09'	181.00'	20.13
C16	134°31'	43.34'	181.00'	21.77
C17	90°00'00"	7.85'	5.00'	5.00
C18	48°35'25"	16.96'	20.00'	9.03
C19	41°24'35"	14.45'	20.00'	7.56
C20	90°00'00"	7.85'	5.00'	5.00
C21	90°00'00"	7.85'	5.00'	5.00
C22	90°00'00"	7.85'	5.00'	5.00
C23	41°24'35"	14.45'	20.00'	7.56
C24	47°42'04"	16.65'	20.00'	8.84
C25	41°24'35"	14.45'	20.00'	7.56
C26	48°35'25"	16.96'	20.00'	9.03
C27	90°00'00"	7.85'	5.00'	5.00
C28	41°24'35"	14.45'	20.00'	7.56
C29	41°24'35"	14.45'	20.00'	7.56
C30	41°24'35"	14.45'	20.00'	7.56
C31	41°24'35"	14.45'	20.00'	7.56
C32	48°35'25"	16.96'	20.00'	9.03
C33	90°00'00"	7.85'	5.00'	5.00
C34	41°24'35"	14.45'	20.00'	7.56
C35	48°35'25"	16.96'	20.00'	9.03
C36	228°40'	25.10'	580.50'	12.55
C37	313°32'	32.68'	580.50'	16.34
C38	137°19'	40.18'	1419.50'	20.09
C39	018°09'	7.49'	1419.50'	3.75
C40	137°05'	40.09'	1419.50'	20.05
C41	136°57'	40.03'	1419.50'	20.02
C42	136°53'	40.00'	1419.50'	20.00
C43	136°53'	40.01'	1419.50'	20.01
C44	136°59'	40.04'	1419.50'	20.02
C45	120°00'	33.03'	1419.50'	16.52
C46	041°54'	7.07'	580.50'	3.54
C47	337°05'	40.03'	580.50'	20.03
C48	101°08'	10.32'	580.50'	5.16
C49	74°72'	29.91'	220.00'	14.98
C50	9°07'13"	35.02'	220.00'	17.55
C51	16°01'53"	61.56'	220.00'	30.98
C52	34°26'11"	30.05'	50.00'	15.49
C53	117°30'	2.20'	50.00'	1.10
C54	113°30'	29.12'	100.00'	10.09
C55	34°21'00"	40.03'	619.50'	20.02
C56	015°44'	2.84'	619.50'	1.42
C57	048°28'	20.87'	1480.50'	10.43
C58	147°03'	19.29'	619.50'	9.65
C59	133°08'	40.11'	1480.50'	20.05
C60	132°59'	40.04'	1480.50'	20.02
C61	132°54'	40.01'	1480.50'	20.01
C62	132°53'	40.00'	1480.50'	20.00
C63	132°57'	40.03'	1480.50'	20.01
C64	133°04'	40.08'	1480.50'	20.04
C65	122°09'	35.38'	1480.50'	17.69
C66	342°24'	40.08'	619.50'	20.05
C67	026°32'	4.78'	619.50'	2.39
C68	041°15'	7.43'	619.50'	3.72
C69	48°35'25"	16.96'	20.00'	9.03
C70	41°24'35"	14.45'	20.00'	7.56
C71	48°35'25"	16.96'	20.00'	9.03
C72	357°25'	40.09'	580.50'	20.05
C73	357°25'	40.09'	580.50'	20.05
C74	096°09'	1.04'	580.50'	0.52
C75	130°40'	40.08'	1519.50'	20.04
C76	130°33'	40.03'	1519.50'	20.01
C77	130°30'	40.00'	1519.50'	20.00
C78	130°31'	40.01'	1519.50'	20.00
C79	130°35'	40.04'	1519.50'	20.02
C80	130°44'	40.10'	1519.50'	20.05
C81	056°27'	24.95'	1519.50'	12.48
C82	130°04'	15.21'	580.50'	7.61
C83	357°07'	40.04'	580.50'	20.03
C84	017°46'	3.00'	580.50'	1.50
C85	50°28'56"	30.84'	35.00'	16.50
C86	39°31'04"	24.14'	35.00'	12.57
C87	53°07'48"	18.55'	20.00'	10.00
C88	36°52'12"	12.87'	20.00'	6.67
C89	49°28'47"	17.27'	20.00'	9.22
C90	41°24'35"	14.45'	20.00'	7.56
C91	41°24'35"	14.45'	20.00'	7.56
C92	54°00'07"	59.36'	600.00'	29.71
C93	112°01'5"	277.03'	1400.00'	138.57
C94	54°00'07"	59.36'	600.00'	29.71
C95	32°56'28"	115.27'	200.50'	59.28
C96	57°16'47"	549.85'	550.00'	300.37
C97	191°04'0"	342.91'	1025.00'	173.07
C98	90°00'00"	85.61'	54.50'	54.50
C99	54°43'47"	69.21'	600.00'	30.13
C100	112°28'31"	300.42'	1500.00'	150.71
C101	4°50'11"	50.65'	600.00'	25.34

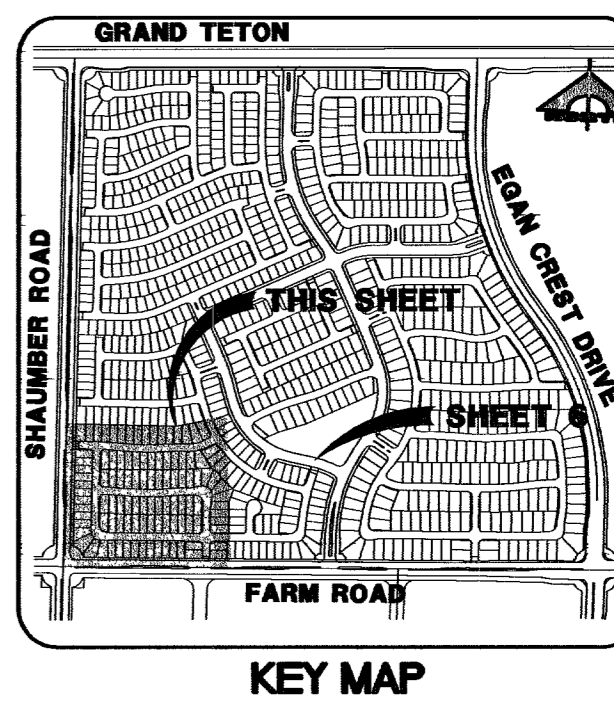
MATCHLINE SEE SHEET 6

LINE	LENGTH	BEARING
L1	35.30'	N89°14'06"E
L2	41.66'	N89°14'06"E
L3	41.66'	N89°14'06"E
L4	16.74'	N89°14'06"E
L5	35.08'	N89°14'06"E
L6	4.76'	N89°14'06"E
L7	29.00'	N88°20'44"E
L8	30.00'	S01°39'16"E
L9	26.00'	S01°39'16"E
L10	70.06'	S88°20'44"W
L11	40.00'	S88°20'44"W
L12	40.00'	S88°20'44"W
L13	40.00'	S88°20'44"W
L14	40.00'	S88°20'44"W
L15	40.00'	S88°20'44"W
L16	40.00'	S88°20'44"W
L17	40.00'	S88°20'44"W
L18	40.00'	S88°20'44"W
L19	40.00'	S88°20'44"W
L20	40.00'	S88°20'44"W
L21	40.00'	S88°20'44"W
L22	40.00'	S88°20'44"W
L23	40.00'	S88°20'44"W
L24	40.00'	S88°20'44"W
L25	40.00'	S88°20'44"W
L26	40.00'	S88°20'44"W
L27	40.00'	S88°20'44"W
L28	40.00'	S88°20'44"W
L29	40.00'	S88°20'44"W
L30	40.00'	S88°20'44"W
L31	40.00'	S88°20'44"W
L32	40.00'	S88°20'44"W
L33	40.00'	S88°20'44"W
L34	40.00'	S88°20'44"W
L35	40.00'	S88°20'44"W
L36	40.00'	S88°20'44"W
L37	40.00'	S88°20'44"W
L38	40.00'	S88°20'44"W
L39	40.00'	S88°20'44"W
L40	40.00'	S88°20'44"W
L41	40.00'	S88°20'44"W
L42	40.00'	S88°20'44"W
L43	40.00'	S88°20'44"W
L44	40.00'	S88°20'44"W
L45	40.00'	S88°20'44"W
L46	74.60'	S88°20'44"W
L47	29.00'	N01°39'16"E
L48	46.39'	S88°20'44"W
L49	26.38'	N00°45'55"W
L50	42.14'	N00°45'55"W
L51	42.14'	N00°45'55"W
L52	42.14'	N00°45'55"W
L53	42.14'	N00°45'55"W
L54	42.14'	N00°45'55"W
L55	42.14'	N00°45'55"W
L56	42.14'	N00°45'55"W
L57	42.14'	N00°45'55"W
L58	27.14'	N00°45'55"W
L59	56.00'	N89°14'06"E
L60	29.00'	S01°39'16"E
L61	154.24'	N00°45'55"W
L62	29.68'	N89°14'06"E
L63	10.16'	N89°14'06"E
L64	18.46'	N09°52'22"E
L65	38.62'	N76°49'06"E
L66	1.28'	N76°49'06"E
L67	15.92'	S88°20'44"W
L68	20.66'	N89°14'05"E
L69	20.66'	N89°14'05"E
L70	37.00'	S88°20'44"W
L71	13.00'	S88°20'44"W
L72	141.00'	S01°39'16"E
L73	28.00'	S88°20'44"W
L74	40.00'	S88°20'44"W
L75	40.00'	S88°20'44"W
L76	40.00'	S88°20'44"W
L77	40.00'	S88°20'44"W
L78	40.00'	S88°20'44"W
L79	40.00'	S88°20'44"W
L80	40.00'	S88°20'44"W
L81	40.00'	S88°20'44"W
L82	40.00'	S88°20'44"W
L83	40.00'	S88°20'44"W
L84	40.00'	S88°20'44"W
L85	40.00'	S88°20'44"W
L86	40.00'	S88°20'44"W
L87	40.00'	S88°20'44"W
L88	40.00'	S88°20'44"W
L89	40.00'	S88°20'44"W
L90	40.00'	S88°20'44"W
L91	40.00'	S88°20'44"W
L92	40.00'	S88°20'44"W
L93	40.00'	S88°20'44"W
L94	40.00'	S88°20'44"W
L95	40.00'	S88°20'44"W
L96	40.00'	S88°20'44"W
L97	40.00'	S88°20'44"W
L98	40.00'	S88°20'44"W
L99	40.00'	S88°20'44"W
L100	40.00'	S88°20'44"W
L101	40.00'	S88°20'44"W
L102	40.00'	S88°20'44"W
L103	31.26'	S88°20'44"W
L104	156.19'	N00°45'55"W
L105	140.34'	N89°14'06"E
L106	39.84'	N89°14'06"E
L107	45.98'	S56°17'38"W
L108	149.74'	N24°26'55"E
L109	118.55'	N80°12'02"W
L110	1244.93'	S88°20'44"W
L111	157.23'	S01°39'16"E
L112	21.00'	S88°20'44"W
L113	281.00'	S01°39'16"E
L114	50.00'	S88°20'44"W
L115	60.17'	N89°14'05"E
L116	469.05'	N00°45'55"W



RETAINING WALL CONVERSION TABLE

NO. COURSES	HEIGHT
A2	1.33'
A3	2.00'
A4	2.67'
A5	3.33'
A6	4.00'
A7	4.67'
A8	5.33'
A9	6.00'
A10	6.67'
A11	7.33'
A12	8.00'
A13	8.67'



Call before you Dig. 1-800-227-2600

Call before you UnderGround. 1-702-455-7511

Call before you Dig. 1-800-227-2600

Call before you UnderGround. 1-702-227-2929

BASIS OF BEARINGS
 N 88°21'18" E BEING THE SOUTH LINE OF THE SOUTHWEST QUARTER (SW 1/4) OF THE NORTHEAST QUARTER (NE 1/4) OF SECTION 13, T19S, R59E, M.D.M., AS SHOWN BY RECORD OF SURVEY ON FILE IN THE CLARK COUNTY, NEVADA RECORDER'S OFFICE IN FILE 124 OF SURVEYS AT PAGE 94.

BENCHMARK

DESC.	NAVD 88 DATUM	NAVD 88 DATUM
RIVET AND PLATE IN CONCRETE CYLINDER AT THE NORTHWEST CORNER OF HUALAPAI WAY AND FARM ROAD.	2860.79 (FEET)	871.971 (METERS)

DRAINAGE CERTIFICATION
 I CERTIFY THAT THE GRADING PLAN IS IN CONFORMANCE WITH THE APPROVED DRAINAGE STUDY ON FILE IN THE CLARK COUNTY, NEVADA RECORDER'S OFFICE IN FILE #033771.

Joshua L. Johnson R.P.E. 15789 107Y4816-2 DATE

NOTE:
 1. ALL PRIVATE STREETS ARE P.U.E., PUBLIC SEWER EASEMENTS, AND PUBLIC DRAINAGE EASEMENTS TO BE PRIVATELY MAINTAINED BY THE HOMEOWNERS ASSOCIATION.
 2. QUANTITY ESTIMATES ARE SHOWN ON SHEET C-3.

ENGINEER: JOSHUA L. JOHNSON R.P.E. 15789
 DRAFTER: G. WALLACE
 CHECKER: G. WALLACE
 DATE: 10/26/2024
 PROJECT: 107Y4816-OS-7
 SHEET: C-5
 TOTAL SHEETS: 17
 JOB NO. 819.002.X08

G.C. WALLACE, INC.
 Engineers/Planners/Surveyors
 1545 SOUTH PARKWAY, SUITE 100, LAS VEGAS, NEVADA 89146
 PHONE: (702) 804-2000 • FAX: (702) 804-2299
 www.gwallace.com

MERRITAGE HOMES
 NORTHERN TERRACE - UNIT 2
 GRADING PLAN 1

DRAWING: C-5
 OF 17 SHEETS