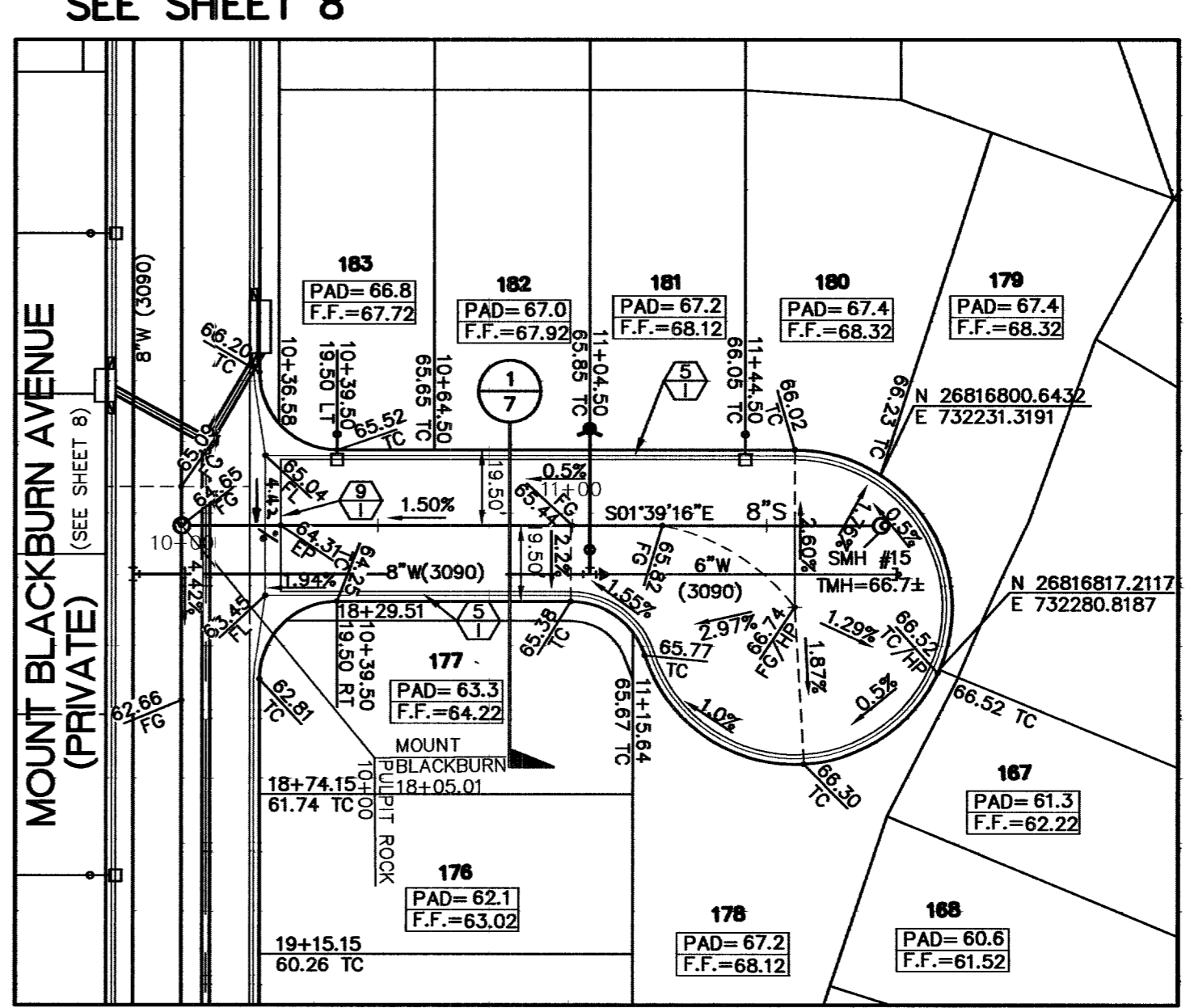


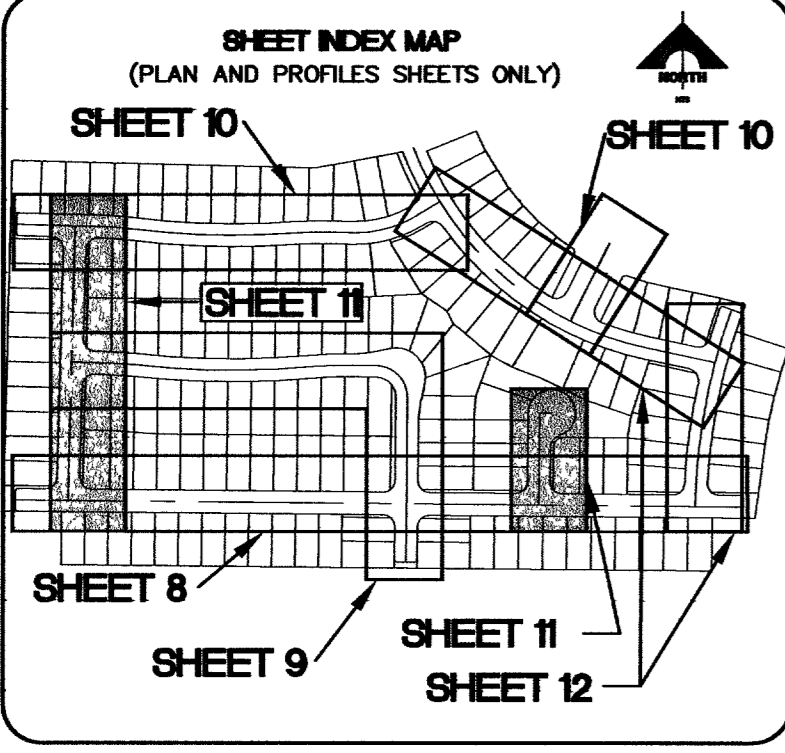
SEE SHEET 8

SEE SHEET 9
REDCLOUD PEAK STREET (PRIVATE)

SEE SHEET 10

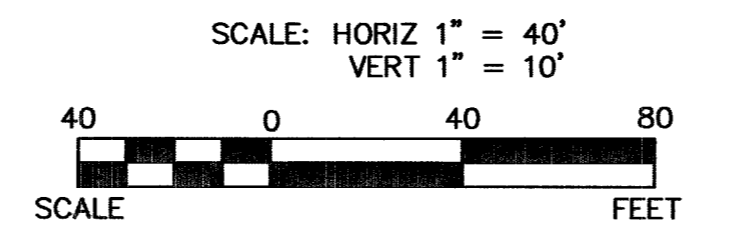


SEE SHEET 8
PULPIT ROCK COURT (PRIVATE)



BASIS OF BEARINGS
 N 89°21'18" E BEING THE SOUTH LINE OF THE SOUTHWEST QUARTER (SW 1/4) OF THE NORTHEAST QUARTER (NE 1/4) OF SECTION 13, T19S, R99E, M.D.M., AS SHOWN BY RECORD OF SURVEY ON FILE IN THE CLARK COUNTY, NEVADA RECORDER'S OFFICE IN FILE 124 OF SURVEYS AT PAGE 94.

BENCHMARK		
DESC.	NAVD 88 DATUM	NAVD 88 DATUM
BLV99 13E4 RIVET AND PLATE IN CONCRETE CYLINDER AT THE NORTHWEST CORNER OF HUALAPAI WAY AND FARM ROAD.	2860.79 (FEET)	871.971 (METERS)



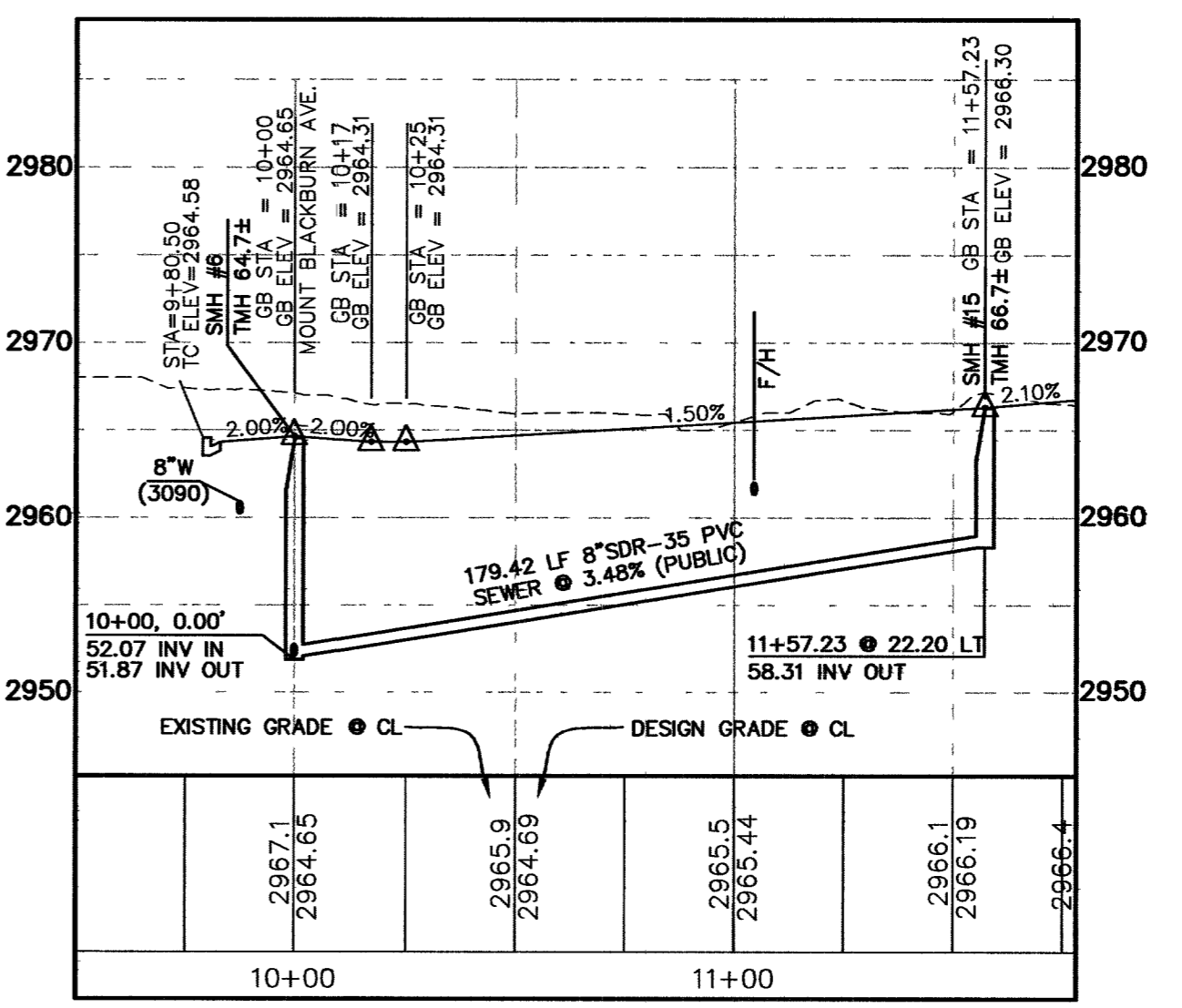
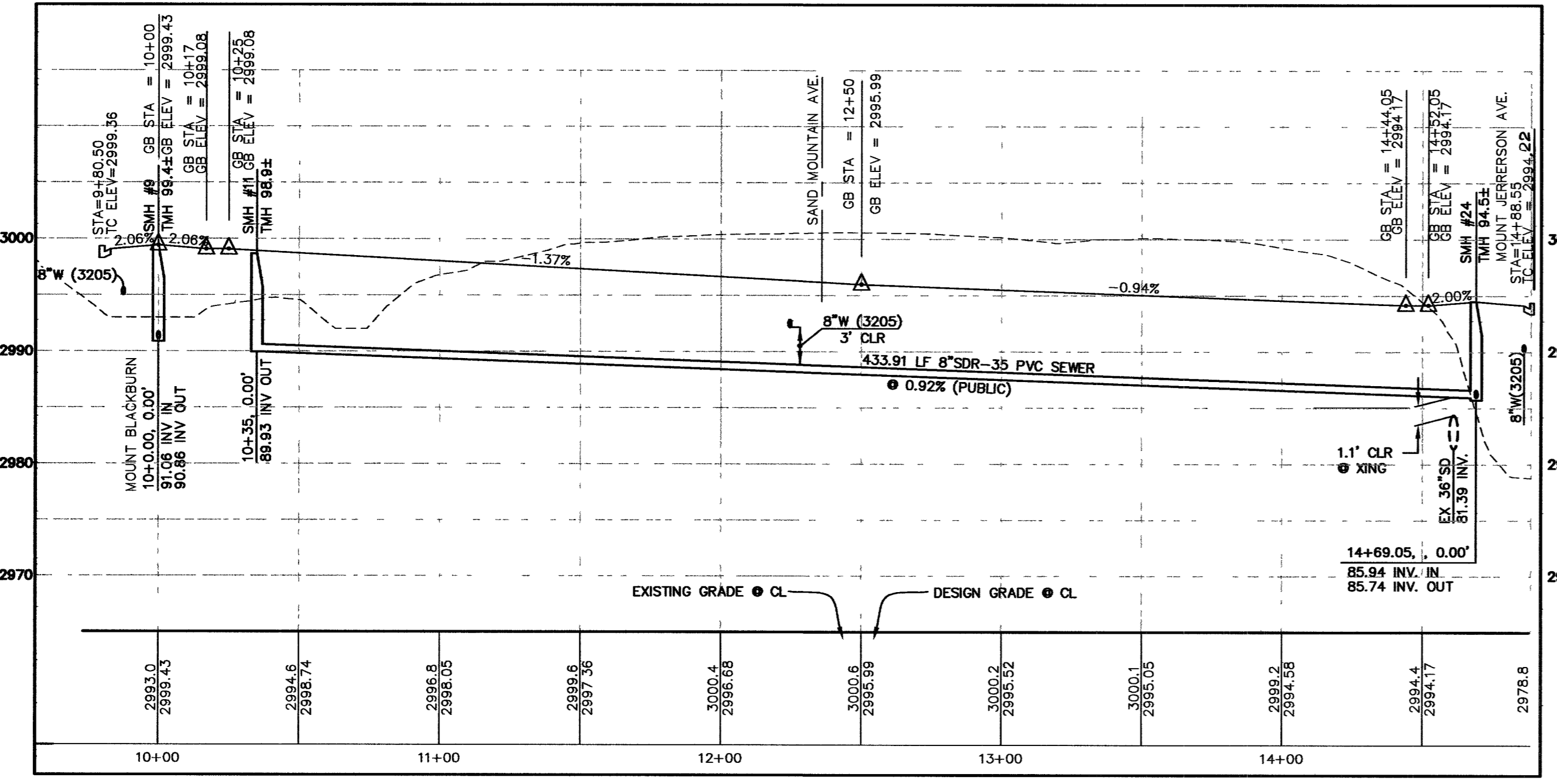
NOTE:
 ALL PRIVATE STREETS ARE P.U.E., PUBLIC SEWER EASEMENTS, AND PUBLIC DRAINAGE EASEMENTS TO BE PRIVATELY MAINTAINED BY THE HOMEOWNERS ASSOCIATION.

Call before you Dig.
 1-702-455-7511
 1-702-229-6611

Call before you Dig.
 1-800-227-2600

CALL BEFORE YOU DO OVERHEAD
 1-702-227-2929

APPROVAL: *Steve Hoehn* LVVWD NO. 111600
 LAS VEGAS VALLEY WATER DISTRICT
 DATE: 7-25-06



93089 95210

CLV DRAWING NO. 1074891-2

DATE: 6/19/06

DRAWING: C-11

JOB NO. 89.002.X08

DRAWING: C-11

11 OF 17 SHEETS

DESIGN: _____
 DRAWN: _____
 CHECK: _____
 ISSUE DATE: _____
 ISSUE EDITOR: _____
 PLOT DATE: 06-14-06
 PLOT TIME: 16:05:12

G. C. WALLACE, INC.
 Engineers/Planners/Surveyors
 1555 SOUTH RAINBOW BLVD., LAS VEGAS, NEVADA 89146
 TELEPHONE: (702) 804-2000 • FAX: (702) 804-2939
 E-Mail: GWallace@GWallace.com

MERITAGE HOMES
 NORTHERN TERRACE - UNIT 2
 REDCLOUD PEAK STREET AND PULPIT ROCK COURT
 PLAN AND PROFILE