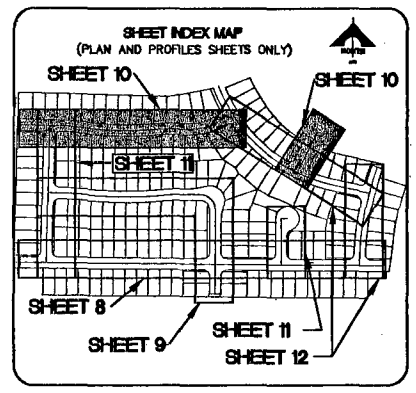


SEE SHEET 11 MOUNT JEFFERSON AVENUE (PRIVATE)

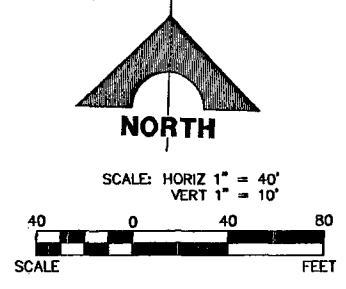
SEE SHEET 12 MOUNT VICTORIA LANE (PRIVATE)



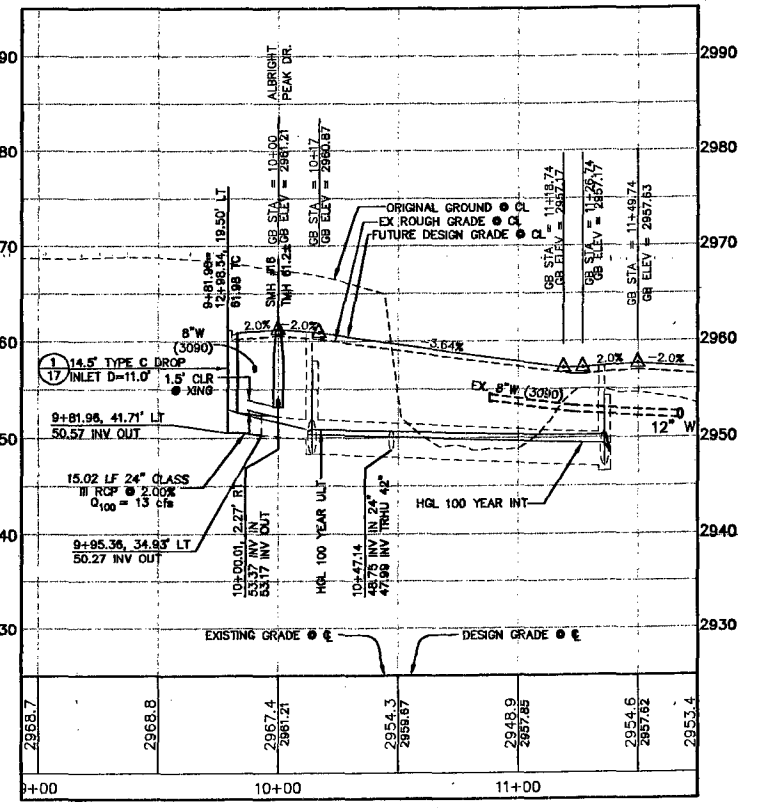
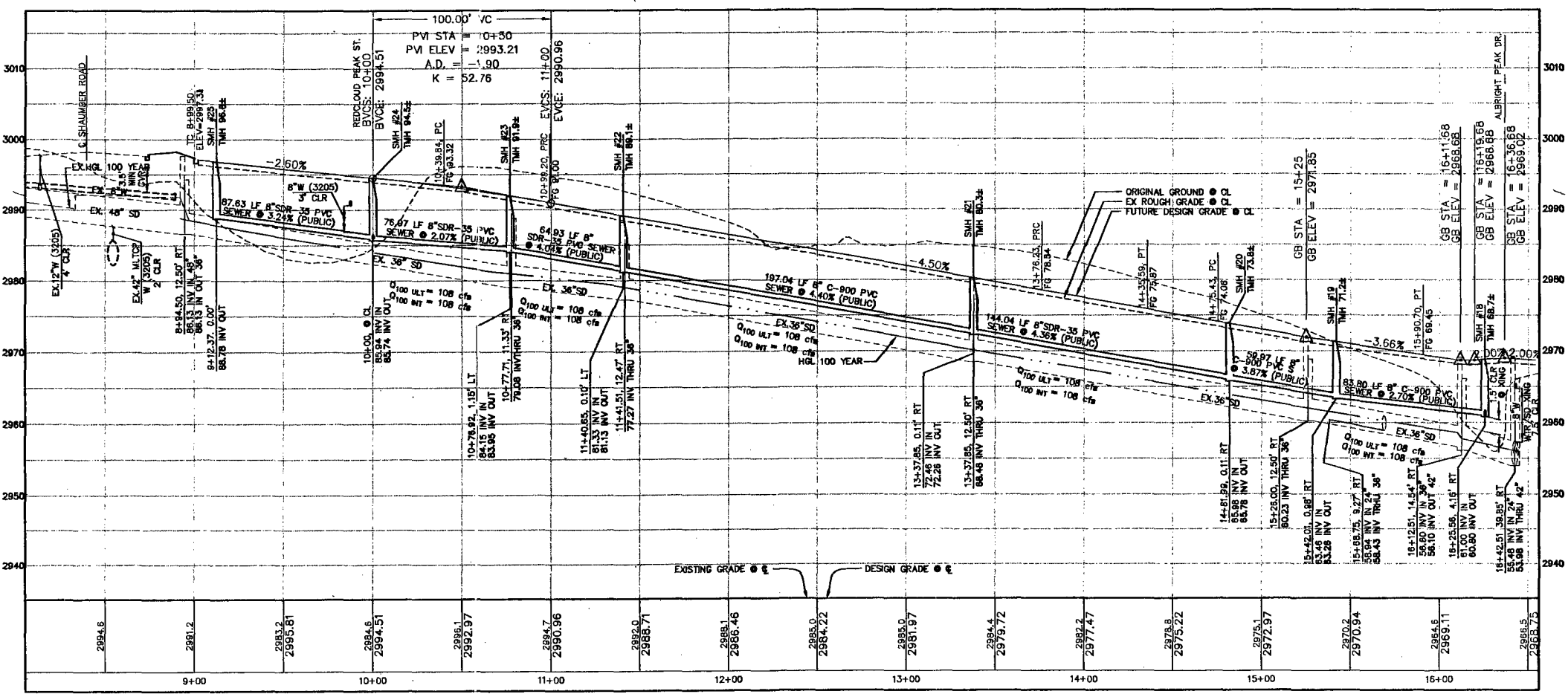
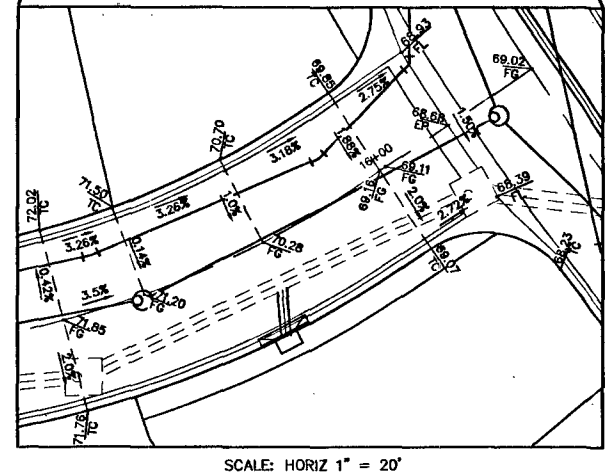
**NOTE TO CONTRACTOR**  
CONTRACTOR TO VERIFY ALL EXISTING SEWER & STORM DRAIN SIZES, INVERTS AND LOCATIONS. IF A DISCREPANCY EXISTS, CONTRACTOR TO NOTIFY THE ENGINEER PRIOR TO CONSTRUCTION.

**BASIS OF BEARINGS**  
N 88°21'18" E BEING THE SOUTH LINE OF THE SOUTHWEST QUARTER (SW 1/4) OF THE NORTHEAST QUARTER (NE 1/4) OF SECTION 13, T19S, R09E, M.D.M., AS SHOWN BY RECORD OF SURVEY ON FILE IN THE CLARK COUNTY, NEVADA RECORDER'S OFFICE IN FILE 124 OF SURVEYS AT PAGE 94.

BENCHMARK		
DESC.	NAD 83 DATUM	NAD 83 DATUM
RIVET AND PLATE IN CONCRETE CYLINDER AT THE NORTHWEST CORNER OF HUALAPAI WAY AND FARM ROAD.	2860.79 (FEET)	871.971 (METERS)



**NOTE:**  
ALL PRIVATE STREETS ARE P.U.E., PUBLIC SEWER EASEMENTS, AND PUBLIC DRAINAGE EASEMENTS TO BE PRIVATELY MAINTAINED BY THE HOMEOWNERS ASSOCIATION.

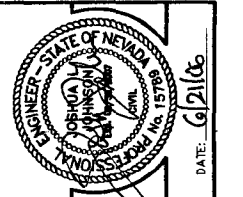


Call before you Dig  
UnderGround  
1-702-455-7511  
1-702-229-6611

APPROVAL: *Steve Poole* LVWD NO. 111600  
LAS VEGAS VALLEY WATER DISTRICT  
7-25-06 DATE

Call before you Dig  
1-800-227-2600  
UNDERGROUND SERVICE ALERT (USA)

CALL BEFORE YOU DIG  
1-702-227-2929



**AS BUILT**

DATE: 7/25/06  
DRAWN BY: J.C. WALLACE  
CHECKED BY: J.C. WALLACE  
ISSUE DATE: 08-21-08  
PLOT DATE: 08-21-08  
PLOT TIME: 11:20:03

DESIGN: J.C. WALLACE  
CHECK: J.C. WALLACE  
ISSUE DATE: 08-21-08  
PLOT DATE: 08-21-08  
PLOT TIME: 11:20:03

G.C. WALLACE, INC.  
Engineers/Planners/Surveyors  
1555 SOUTH RAINBOW BLVD./LAS VEGAS, NEVADA 89146  
TELEPHONE: (702) 844-5000 • FAX: (702) 804-2249

MERTAGE HOMES  
NORTHERN TERRACE - UNIT 2  
MOUNT JEFFERSON AVENUE  
AND MOUNT VICTORIA LANE PLAN AND PROFILE

118243

CLV DRAWING NO. 10744891-2