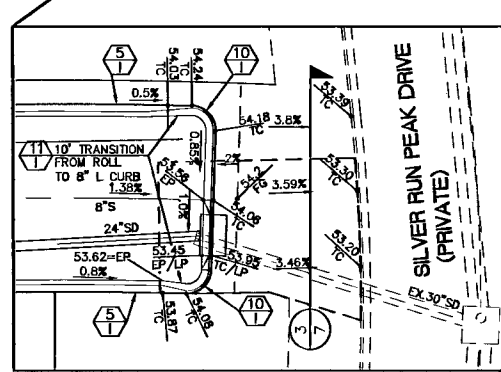
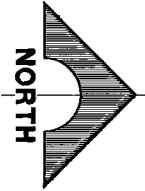
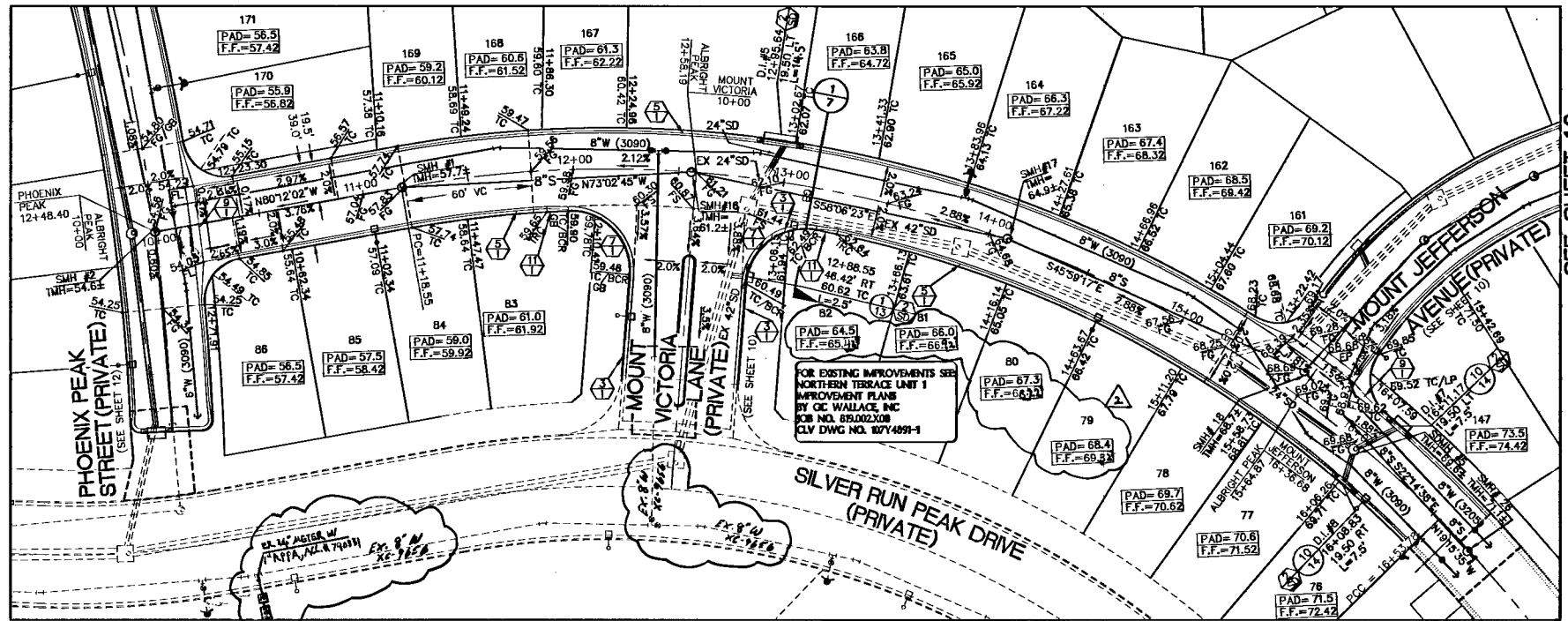
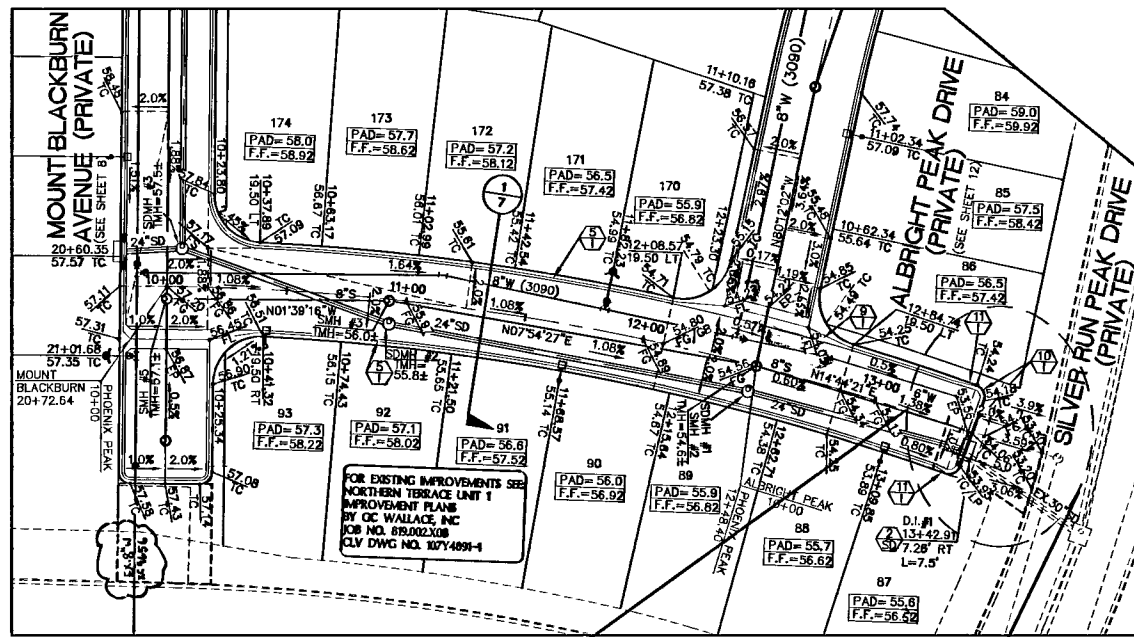


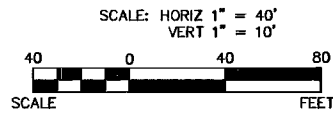
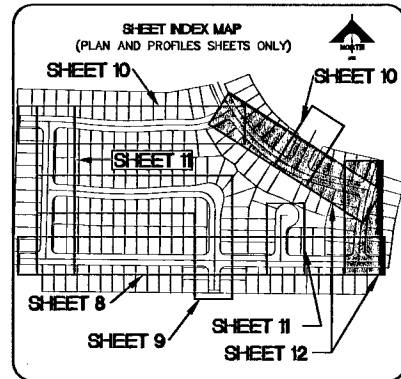
SEE SHEET 8

SEE SHEET 12

SEE SHEET 12



SCALE: HORIZ 1" = 20'



Call before you Dig.  
1-702-455-7511  
1-702-229-6611

Call before you Dig.  
1-800-227-2600

CALL BEFORE YOU DO OVERHEAD  
1-702-227-2929

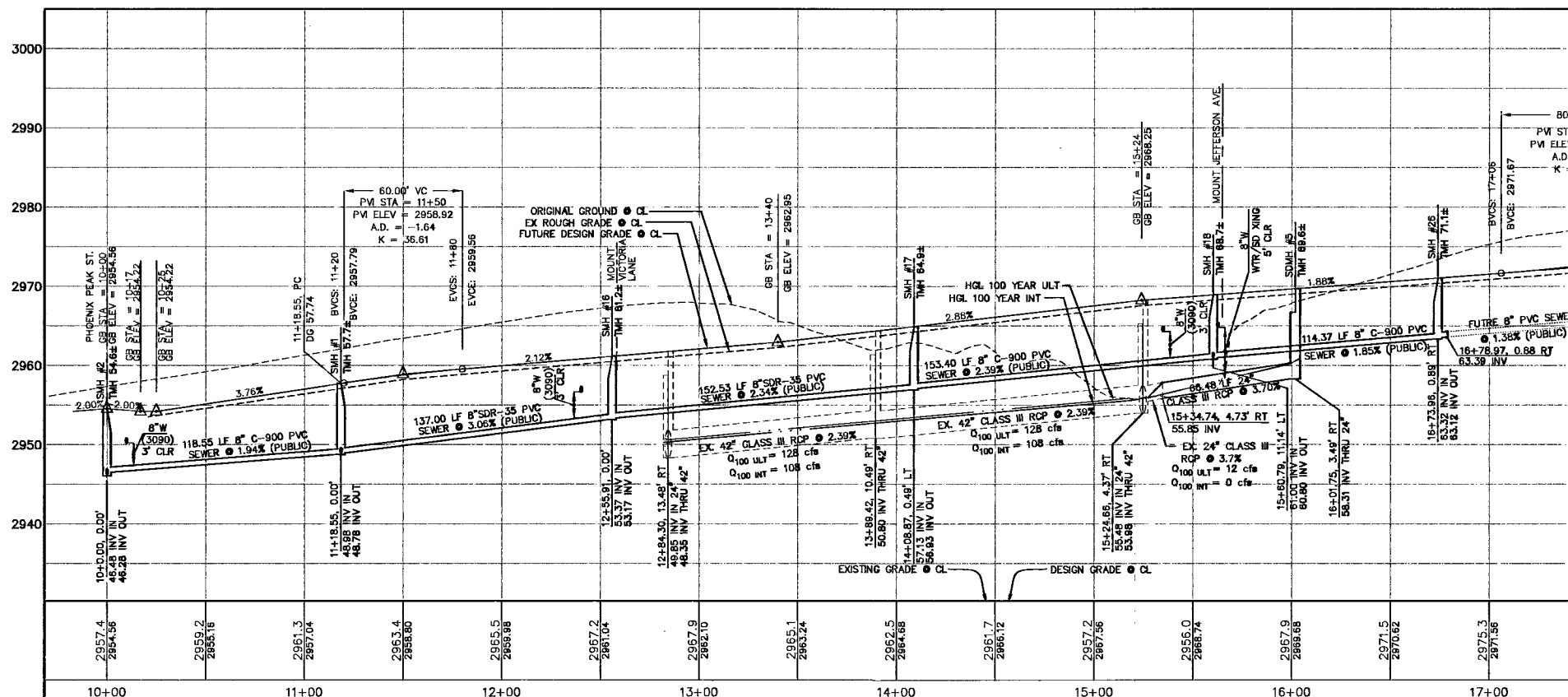
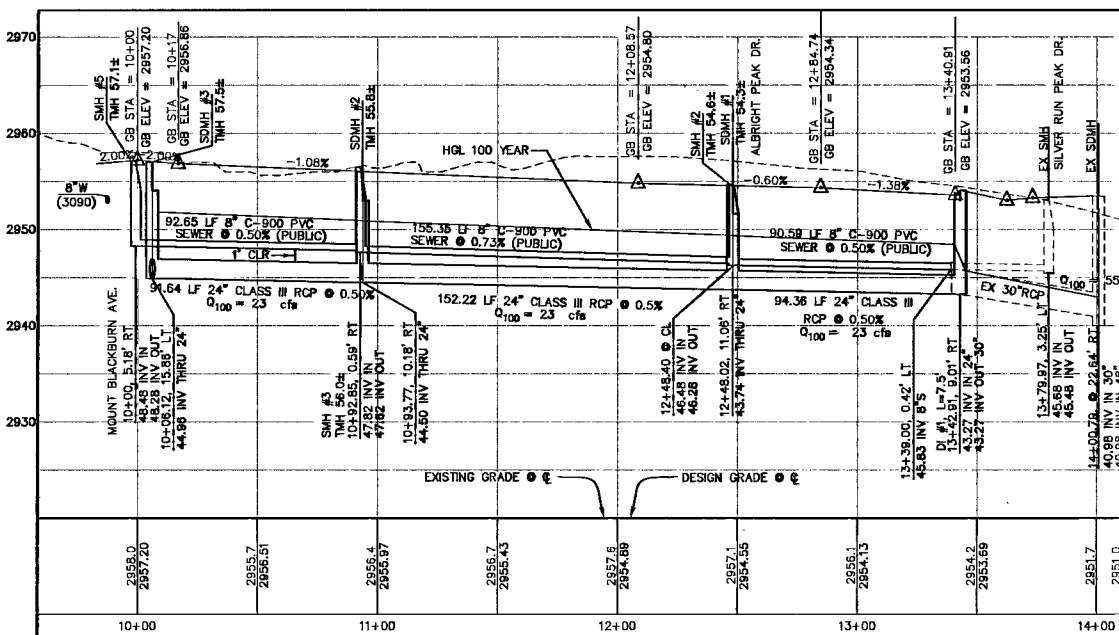
**BASIS OF BEARINGS**  
N 88°21'18" E BEING THE SOUTH LINE OF THE SOUTHWEST QUARTER (SW 1/4) OF THE NORTHEAST QUARTER (NE 1/4) OF SECTION 13, T19S, R09E, M.D.M., AS SHOWN BY RECORD OF SURVEY ON FILE IN THE CLARK COUNTY, NEVADA RECORDER'S OFFICE IN FILE 124 OF SURVEYS AT PAGE 94.

DESC.	NAVD 88 DATUM	NAVD 88 DATUM
BLY99 13E4 RIVET AND PLATE IN CONCRETE CYLINDER AT THE NORTHWEST CORNER OF HUALAPAI WAY AND FARM ROAD.	2860.79 (FEET)	871.971 (METERS)

APPROVAL: *[Signature]* LVVWD NO. 111600  
LAS VEGAS VALLEY WATER DISTRICT  
DATE: 7-25-06

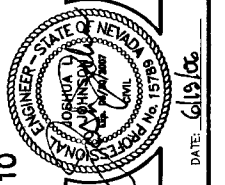
**NOTE:**  
ALL PRIVATE STREETS ARE P.U.E., PUBLIC SEWER EASEMENTS, AND PUBLIC DRAINAGE EASEMENTS TO BE PRIVATELY MAINTAINED BY THE HOMEOWNERS ASSOCIATION.

### PHOENIX PEAK STREET (PRIVATE)



93090 95211 116421

CLV DRAWING NO. 10744891-2



DATE: 6/19/06  
JOB NO. 819.002.X08  
DRAWING NO. 10744891-2

DESIGN: [Name]  
DRAWING: [Name]  
CHECK: [Name]  
ISSUE DATE: [Date]  
PLOT DATE: 06-14-06  
PLOT TIME: 16:05:25

**G.C. WALLACE, INC.**  
Engineers/Planners/Surveyors  
1515 N. TERRACE UNIT 2, LAS VEGAS, NV 89102  
PHONE: (702) 604-2000 FAX: (702) 604-2999  
E-MAIL: GWallace@wallaceinc.com

**MERITAGE HOMES**  
NORTHERN TERRACE - UNIT 2  
PHOENIX PEAK STREET AND  
ALBRIGHT PEAK DRIVE PLAN AND PROFILE  
DRAWING  
**C-12**  
12 OF 17 SHEETS