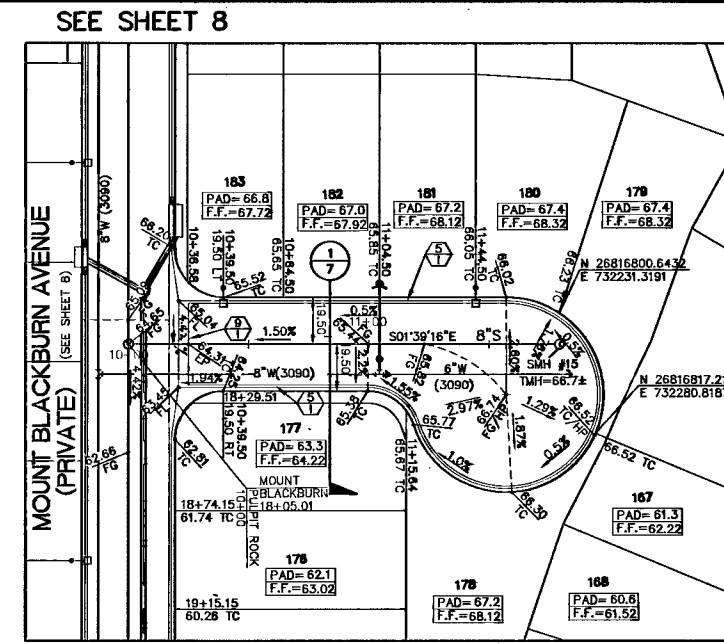


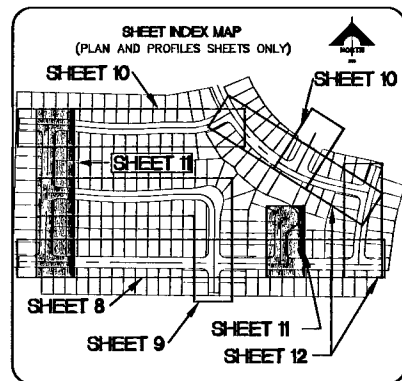
SEE SHEET 8

SEE SHEET 9
REDCLOUD PEAK STREET (PRIVATE)

SEE SHEET 10

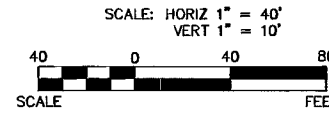


SEE SHEET 8
PULPIT ROCK COURT (PRIVATE)

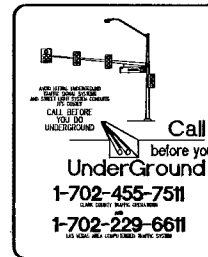


BASIS OF BEARINGS
 N 88°21'18" E BEING THE SOUTH LINE OF THE SOUTHWEST QUARTER (SW 1/4) OF THE NORTHEAST QUARTER (NE 1/4) OF SECTION 13, T19S, R59E, M.D.M., AS SHOWN BY RECORD OF SURVEY ON FILE IN THE CLARK COUNTY, NEVADA RECORDER'S OFFICE IN FILE 124 OF SURVEYS AT PAGE 94.

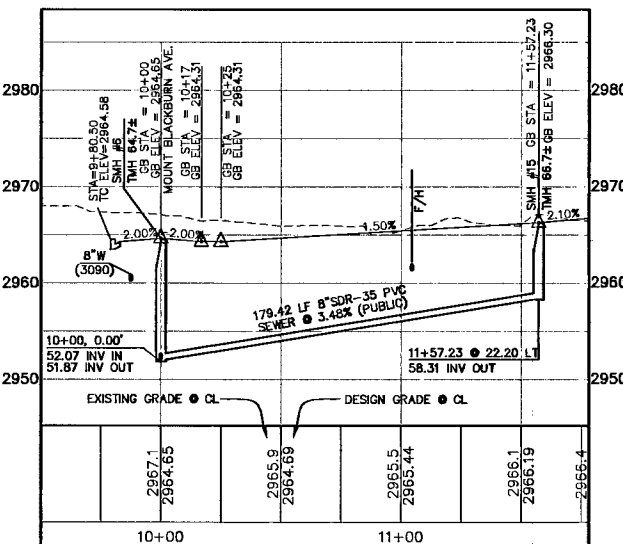
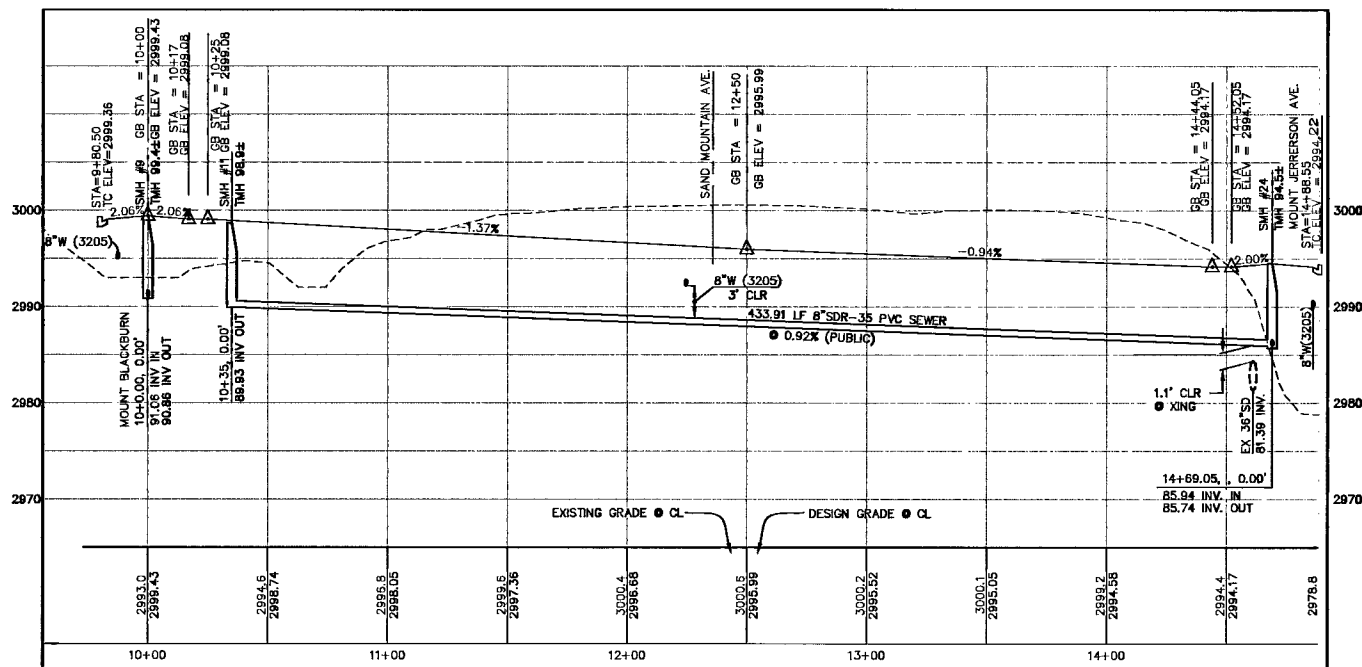
BENCHMARK		
DESC.	NAVD 88 DATUM	NAVD 83 DATUM
BLV99	2860.79	871.971
13E4	(FEET)	(METERS)



NOTE:
 ALL PRIVATE STREETS ARE P.U.E., PUBLIC SEWER EASEMENTS, AND PUBLIC DRAINAGE EASEMENTS TO BE PRIVATELY MAINTAINED BY THE HOMEOWNERS ASSOCIATION.

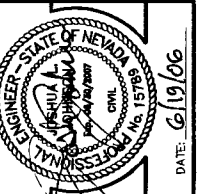


APPROVAL: *[Signature]* LVVWD NO. 111600
 LAS VEGAS VALLEY WATER DISTRICT
 DATE: 7-25-06



93089 95210 116420

CLV DRAWING NO. 1074981-2



G.C. WALLACE, INC.
 Engineers/Planners/Surveyors
 1555 SOUTH RAINBOW BLVD./LAS VEGAS, NEVADA 89146
 TELEPHONE: (702) 804-2000 • FAX: (702) 804-2299
 10 Northern Terrace, Unit 2, Las Vegas, NV 89121

MERITAGE HOMES
 NORTHERN TERRACE - UNIT 2
REDCLOUD PEAK STREET AND PULPIT ROCK COURT
 PLAN AND PROFILE

DRAWING
C-11
 11 OF 17 SHEETS

JOB NO. 819.002.X08