

WATER QUANTITIES (PUBLIC)

6" PVC WATER PIPE	527	LF
8" PVC WATER PIPE	4530	LF
8" DIP WATER PIPE	56	LF
8" GATE VALVE	15	EA
FIRE HYDRANT ASSEMBLY	11	EA
CAP W/ 2" BLOWOFF	7	EA
8"X8" TEE	9	EA
5' BENDS	5	EA
11 1/4" BENDS	8	EA
22.5" BENDS	4	EA
45" BENDS	3	EA
1-1/2" IRRIGATION METER & 1 1/2" RPPA	1	EA
1" TYPE "K" WATER	3775	LF
3/4" METER	155	EA
8" X 6" REDUCER	5	EA

SEWER QUANTITIES (PUBLIC)

8" SDR 35	3356	LF
48" SANITARY MANHOLE	16	EA

SEWER QUANTITIES (PRIVATE)

4" PVC	4023	LF
--------	------	----

STORM DRAIN QUANTITIES (PUBLIC)

24" STORM DRAIN CLASS III RCP	834	LF
STORM DRAIN MANHOLE TYPE I	5	EA
2.5' TYPE "CM" DROP INLET	2	EA
7.5' TYPE "CM" DROP INLET	5	EA
12.5' TYPE "CM" DROP INLET	1	EA
15.0' TYPE "CM" DROP INLET	1	EA

ROADWAY

2" ASPHALTIC CONCRETE PAVEMENT	17390	SY
4" TYPE II BASE	2283	CY
6" TYPE "L" CURB AND GUTTER	113	LF
TYPE "A" ISLAND CURB	124	LF
30" ROLL CURB	8459	LF
HANDICAP RAMP DEPRESSION	1	EA
STREET LANDSCAPING	1563	SY
PARK	894	SY
8" CONCRETE CROSS GUTTER	7	EA
STREET LIGHTS	31	EA
8" L CURB	45	LF

STREET CLASSIFICATION

MOUNT VICTORIA LANE:	51'	PRIVATE RESIDENTIAL STREET
SAND MOUNTAIN AVENUE:	39'	PRIVATE RESIDENTIAL STREET
LAKE FORK PEAK STREET:	39'	PRIVATE RESIDENTIAL STREET
MOUNT JEFFERSON AVENUE:	39'	PRIVATE RESIDENTIAL STREET
MOUNT BLACKBURN AVENUE:	39'	PRIVATE RESIDENTIAL STREET
REDCLOUD PEAK STREET :	39'	PRIVATE RESIDENTIAL STREET
PULPIT ROCK COURT:	39'	PRIVATE RESIDENTIAL STREET
PHOENIX PEAK STREET:	39'	PRIVATE RESIDENTIAL STREET
ALBRIGHT PEAK DRIVE:	39'	PRIVATE RESIDENTIAL STREET

LEGEND & ABBREVIATION

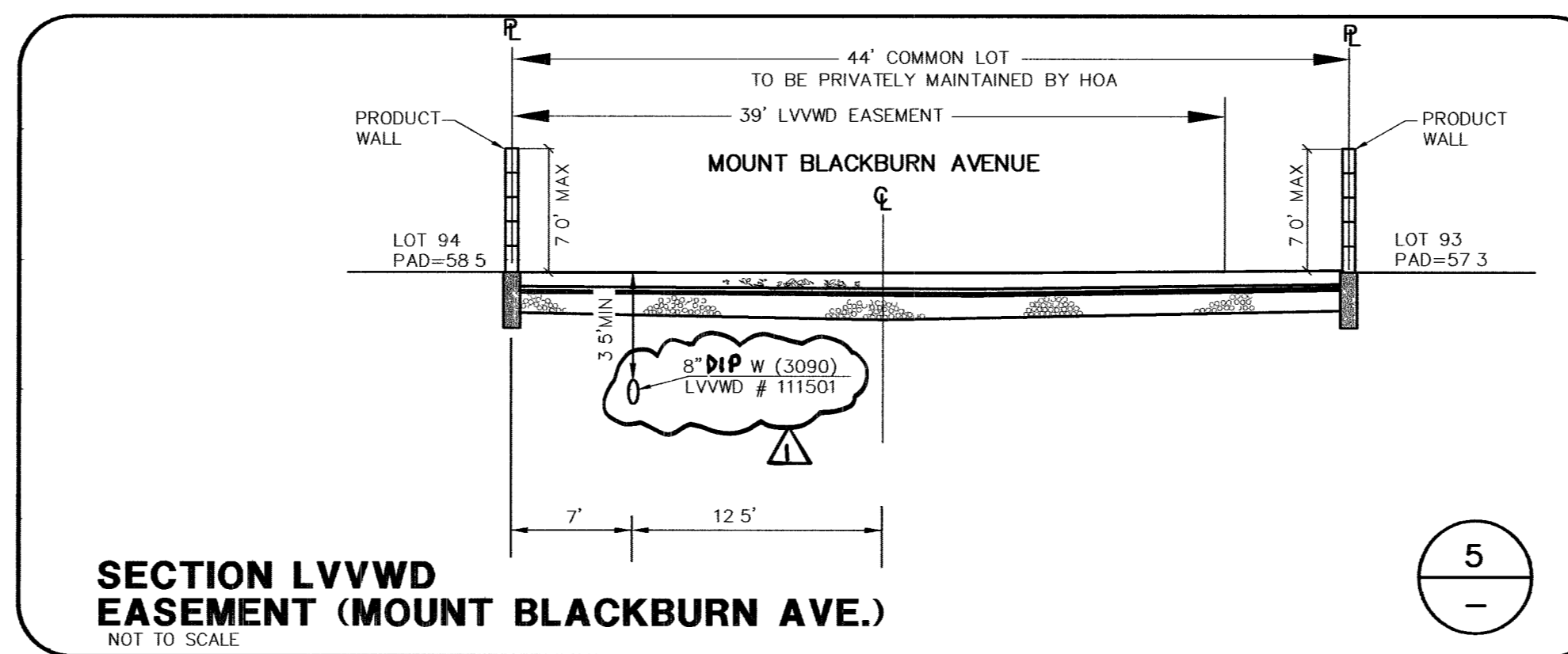
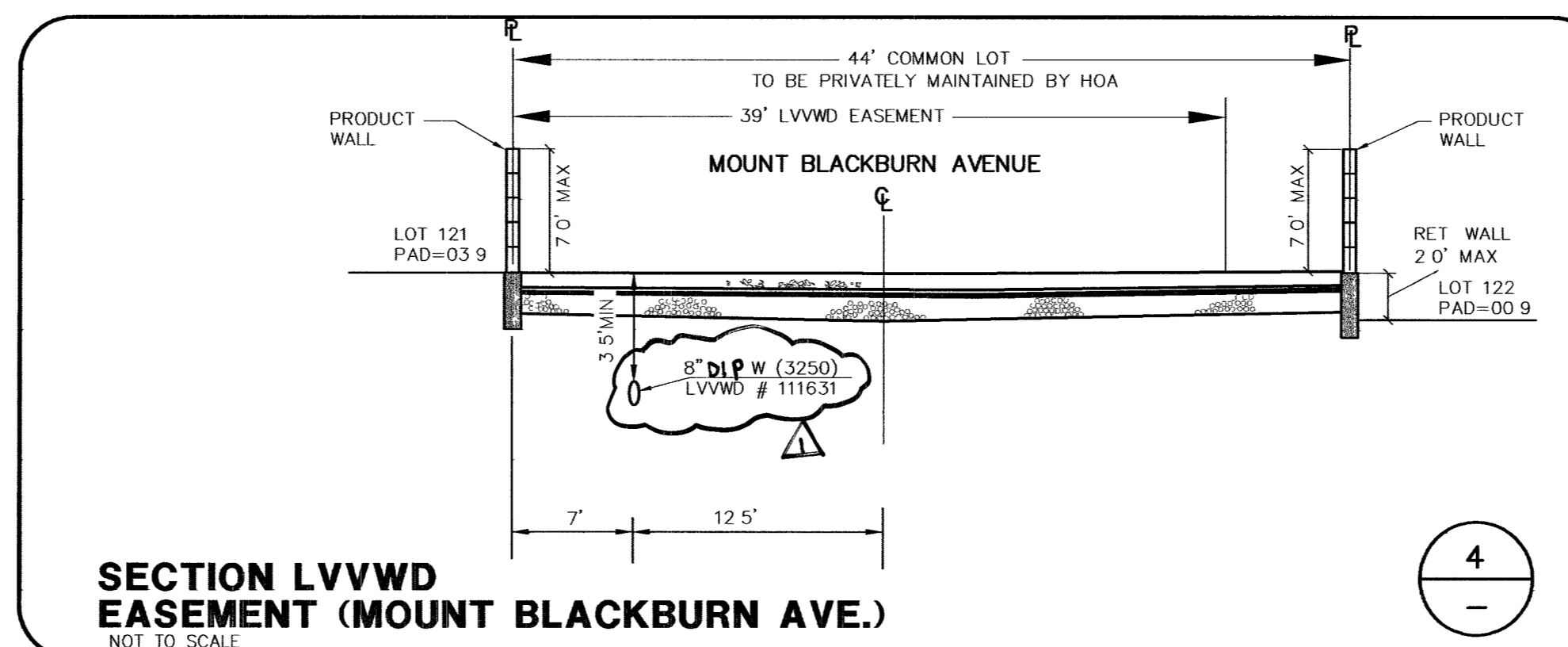
- 1 DETAIL DRAWING NUMBER
- 1 DRAWING NUMBER FOR DETAIL DRAWN ON SAME SHEET
- 1 DRAWING NUMBER FOR DETAIL WITH REFERENCE TO THE SHEET IT IS DRAWN ON
- 01.D2 S DRAWING NUMBER(S) FOR DETAIL(S) PER STANDARDS IN ABBREVIATION TABLE
- 1 INDICATES CONSTRUCTION NOTE
- A INDICATES REMOVAL NOTE
- 1 INDICATES CURVE NUMBER
- INDICATES SEWER MANHOLE IN PROFILE
- INDICATES STORM DRAIN MANHOLE IN PROFILE
- (60.5) TC EXIST. SPOT ELEVATION
- END PIPE & PLUG
- CONCRETE ENCASUREMENT
- FUTURE PROPERTY LINE
- FUTURE BACK OF CURB (ROW)
- FUTURE CENTERLINE

EMBANKMENT

- TOP PROPOSED
- BOTTOM BY SEPARATE CONTRACT
- EXISTING

ABBREVIATION

- I = IMPROVEMENTS
- W = WATER
- S = SEWER
- SD = STORM DRAIN
- IR = IRRIGATION
- T = TELECOMMUNICATION
- SL = STREET LIGHTING
- SIG = TRAFFIC SIGNAL
- SMH = SEWER MANHOLE
- SDMH = STORM DRAIN MANHOLE
- CLV = CITY OF LAS VEGAS
- LVVWD = LAS VEGAS VALLEY WATER DISTRICT
- LSCP = LANDSCAPE PANEL / PROPERTY LINE
- NDOT = NEVADA DEPT. OF TRANSPORTATION
- BVC = BEGIN VERTICAL CURVE
- EVC = END VERTICAL CURVE
- BCT = BEGIN CROSSFALL TRANSITION
- ECT = END CROSSFALL TRANSITION
- UDS = UNIFORM DESIGN AND CONSTRUCTION STANDARDS (UDACS)
- USD = UNIFORM STANDARD DWGS. (CLARK COUNTY)
- DCSWCS = DESIGN AND CONSTRUCTION STANDARDS FOR WASTEWATER COLLECTION SYSTEMS

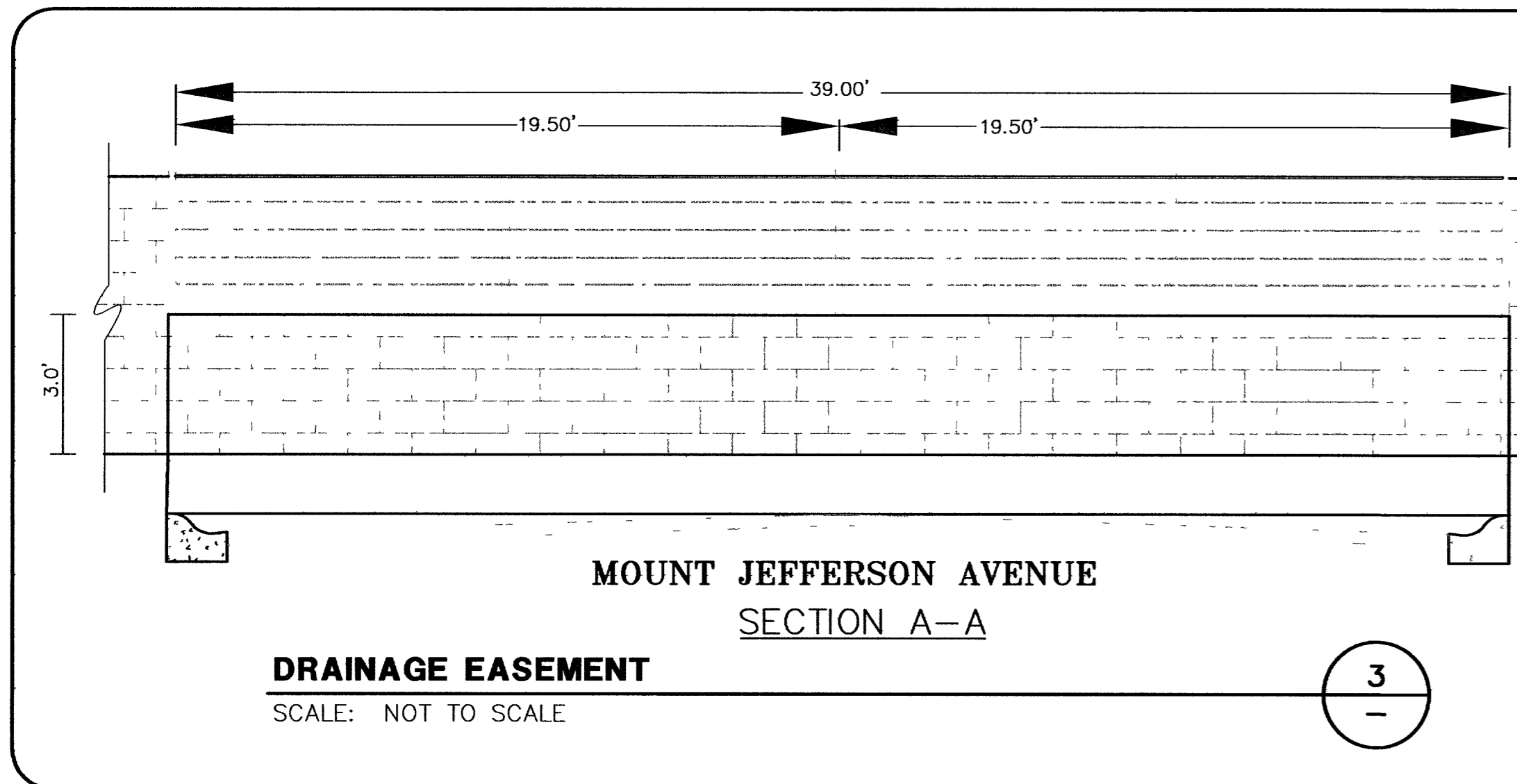
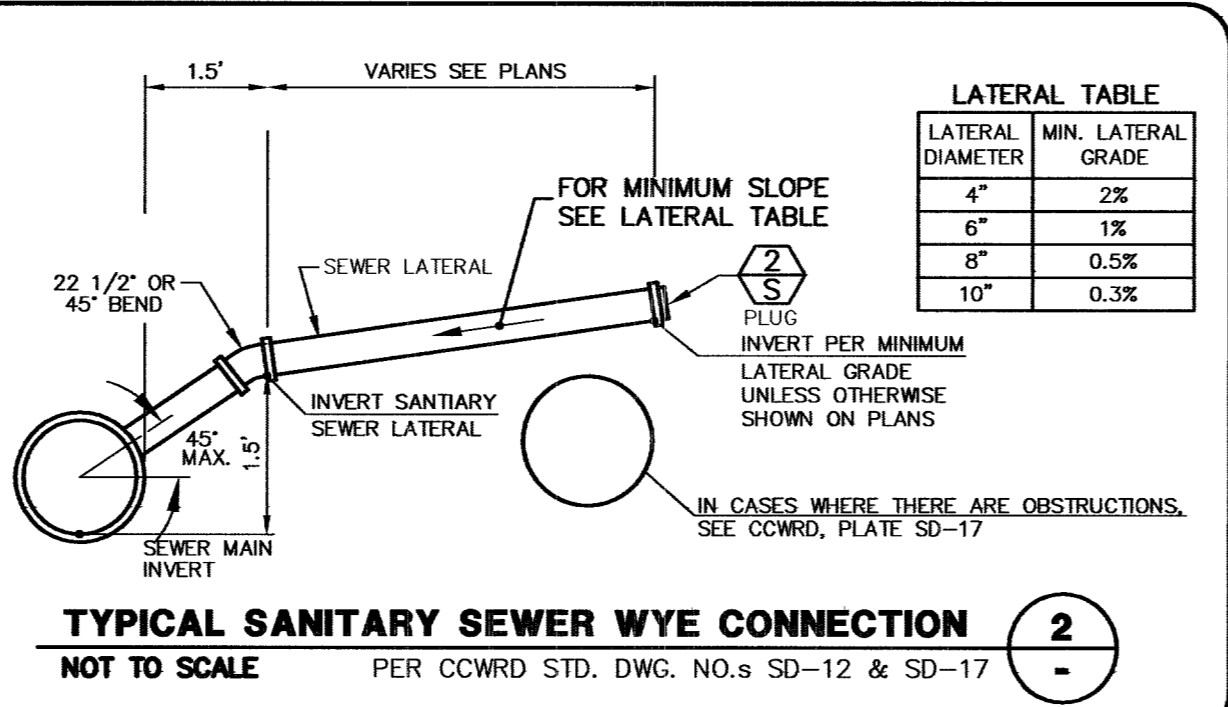


STORM DRAINAGE MANHOLE SCHEDULE

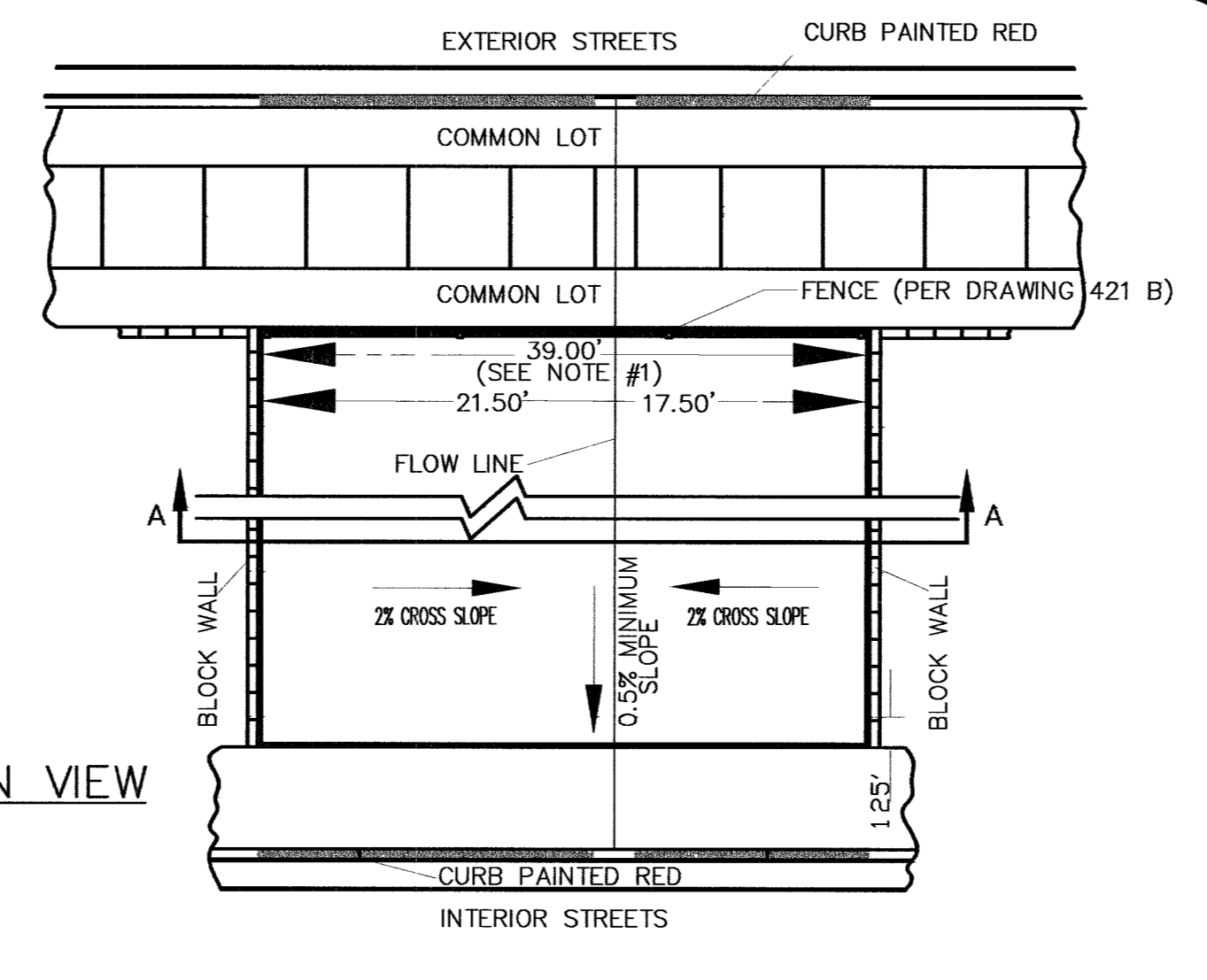
SDMH #	TYPE	STATION	OFFSET	RIM EL.	INVERT ELEV.				COMMENTS
					N	S	E	W	
1	I	12+48.02	11.06 R	2954.3	2943.74	2943.74	---	---	
2	I	10+93.77	10.18 R	2955.8	2944.50	2944.50	---	---	
3	I	20+56.83	06.28 L	2957.5	2944.96	2944.96	---	2944.96	
4	I	17+83.06	06.28 L	2965.5	2955.41	2955.41	---	---	
5	I	16+01.75	03.49 R	2969.6	---	2958.31	2958.31	---	

SEWER MANHOLE SCHEDULE

SMH #	TYPE	STATION	OFFSET	RIM EL.	INVERT ELEV.				COMMENTS
					N	S	E	W	
1	SD-1	11+18.55	00.00	2957.7	---	---	2948.78	2948.98	
2	SD-1	10+00.00	00.00	2954.6	2946.28	2946.48	---	2946.48	
3	SD-1	10+92.85	00.59 R	2956.0	2947.62	2947.82	---	---	
4	SD-1	21+36.69	00.00	2956.0	---	---	---	2948.83	
5	SD-1	10+00.00	05.18 R	2957.1	2948.28	---	2948.48	2948.48	
6	SD-1	18+05.01	00.12 L	2964.7	2952.07	---	2951.87	2952.07	
7	SD-1	15+78.88	00.00	2970.4	2961.16	2961.16	---	2961.16	
7A	SD-1	9+10.37	00.00	2972.8	2964.60	---	---	---	
8	SD-1	14+38.46	00.12 L	2974.8	---	2966.02	2966.22	---	
9	SD-1	10+00.00	00.00	2999.4	---	2990.86	2991.06	---	
10	SD-1	9+49.43	00.00	3002.3	---	2993.77	---	---	
11	SD-1	10+35.00	00.00	2998.9	2989.93	---	---	---	
12	SD-1	10+39.66	00.94 R	2995.1	---	---	2988.67	---	
13	SD-1	12+68.33	08.76 L	2984.9	---	---	2976.05	2976.25	
14	SD-1	15+65.14	21.33 L	2972.2	---	2962.33	---	2962.53	
15	SD-1	11+79.43	00.00	2966.7	---	2958.31	---	---	
16	SD-1	12+55.91	00.00	2961.2	---	---	2953.17	2953.37	
17	SD-1	14+08.87	00.49 L	2964.9	---	---	2956.93	2957.13	
18	SD-1	15+60.79	11.14 L	2968.7	2961.00	---	2960.80	2961.00	
19	SD-1	15+42.01	00.98 R	2971.2	---	---	2963.26	2963.46	
20	SD-1	14+81.99	00.11 R	2973.8	---	---	2965.78	2965.98	
21	SD-1	13+37.85	00.11 R	2980.3	---	---	2972.26	2972.46	
22	SD-1	11+40.65	00.10 L	2989.1	---	---	2981.13	2981.33	
23	SD-1	10+76.92	01.15 L	2991.9	---	---	2983.95	2984.15	
24	SD-1	10+00.00	00.00 L	2994.5	---	2985.94	2985.74	2985.94	
25	SD-1	09+12.37	00.00 L	2996.8	---	---	2988.78	---	
26	SD-1	16+73.96	00.89 R	2971.1	---	---	2963.32	2963.12	



NOTE: STEEL WILL BE PRIMERED AND PAINTED WHITE, UNLESS OTHERWISE SPECIFIED. HALF PERCENT MINIMUM SLOPE THROUGH DRAINAGE SLAB IS REQUIRED. WHERE A STORM DRAIN LINE IS AVAILABLE IN THE EXTERIOR STREET, A STORM DRAIN INLET AT THE BEGINNING OF THE EASEMENT AND AN 18-INCH MINIMUM STORM DRAIN PIPE IS REQUIRED TO CONVEY NUISANCE WATER THROUGH THE EASEMENT. NOTE #1: 20" STANDARD WIDTH, DIFFERENT WIDTHS TO BE DESIGNED ACCORDINGLY AND IN CONFORMANCE WITH THE CLARK COUNTY REGIONAL FLOOD CONTROL DISTRICT HYDROLOGIC CRITERIA AND DRAINAGE DESIGN MANUAL.



BENCHMARK

DESC.	NAVD 88 DATUM	NAVD 88 DATUM
8LV99 13E4 RIVET AND PLATE IN CONCRETE CYLINDER AT THE NORTHWEST CORNER OF HUALAPAI WAY AND FARM ROAD.	2860.79 (FEET)	871.971 (METERS)

BASIS OF BEARINGS
 N 89°21'18" E BEING THE SOUTH LINE OF THE SOUTHWEST QUARTER (SW 1/4) OF THE NORTHEAST QUARTER (NE 1/4) OF SECTION 13, T15S, R9E, M.D.M., AS SHOWN BY RECORD OF SURVEY ON FILE IN THE CLARK COUNTY, NEVADA RECORDER'S OFFICE IN FILE 124 OF SURVEYS AT PAGE 94.

APPROVAL: *[Signature]* LVVWD NO. 111600
 LAS VEGAS VALLEY WATER DISTRICT DATE: 7-25-06

STATE OF NEVADA PROFESSIONAL ENGINEER
 G. C. WALLACE, INC. Engineers/Planners/Surveyors
 1555 SOUTH RAINBOW BLVD., LAS VEGAS, NEVADA 89146
 TELEPHONE: (702) 804-2000 • FAX: (702) 804-2289
 Northern Terrace Unit 2, Suite 100, Las Vegas, NV 89102-0100

DESIGN: _____ CHECK: _____ ISSUE DATE: _____
 DRAWN: _____ PLOT DATE: 06-14-06 PLOT TIME: 16:04:29
 7/25/06 REVISE 8" DIP W PER UNIT 1

MERITAGE HOMES
 NORTHERN TERRACE - UNIT 2
 QUANTITIES, NOTES AND MISCELLANEOUS DETAILS

CLV DRAWING NO. 1074991-2
 SHEET C-3
 3 OF 17 SHTS