

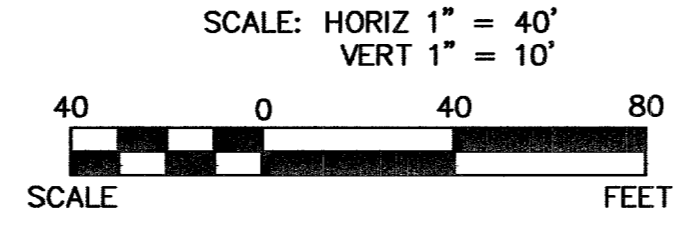
**NOTE TO CONTRACTOR**  
CONTRACTOR TO VERIFY ALL EXISTING SEWER & STORM DRAIN SIZES, INVERTS AND LOCATIONS. IF A DISCREPANCY EXISTS, CONTRACTOR TO NOTIFY THE ENGINEER PRIOR TO CONSTRUCTION.

**FUTURE BANDERA MOUNTAIN LANE (PRIVATE)**

FOR SILVER RUN PEAK DR. SEE PLAN AT RIGHT

FOR SAN LUIS PEAK AVENUE - SEE SHEET 31  
SILVER RUN PEAK DR. (PRIVATE)

**BASIS OF BEARINGS**  
N 88°21'18" E BEING THE SOUTH LINE OF THE SOUTHWEST QUARTER (SW 1/4) OF THE NORTHEAST QUARTER (NE 1/4) OF SECTION 13, T18S, R59E, M.D.M., AS SHOWN BY RECORD OF SURVEY ON FILE IN THE CLARK COUNTY, NEVADA RECORDER'S OFFICE IN FILE 124 OF SURVEYS AT PAGE 94.



**BENCHMARK**

DESC.	NAVD 88 DATUM	NAVD 88 DATUM
RIVET AND PLATE IN CONCRETE CYLINDER AT THE NORTHWEST CORNER OF HUALAPAI WAY AND FARM ROAD.	2860.79 (FEET)	871.971 (METERS)

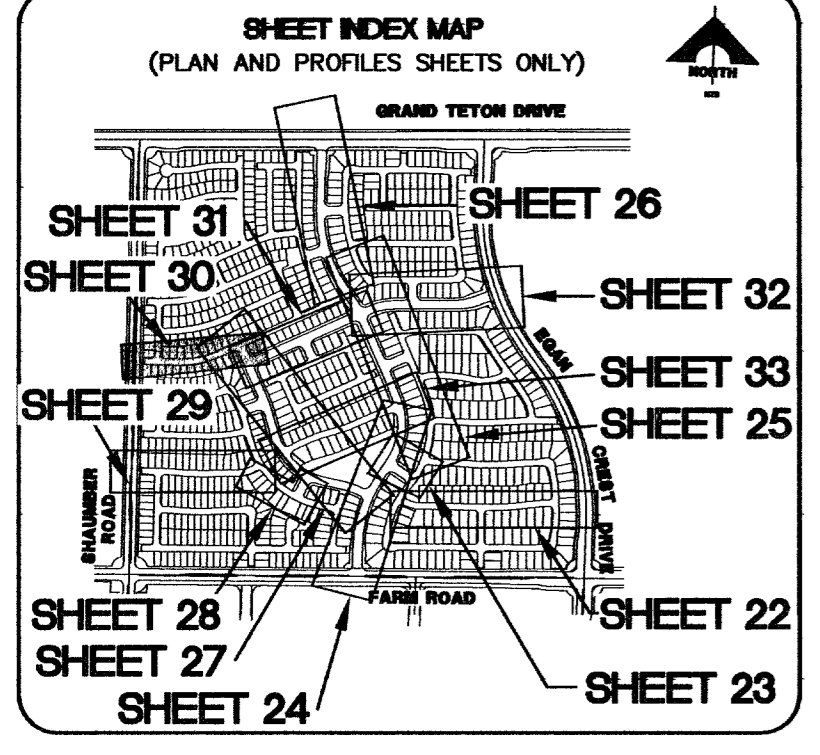
**CONDITIONAL APPROVAL OF VALVED OUTLET (6" AND LARGER)**  
THE WATER PLANS SHOW ONE OR MORE VALVED OUTLETS EXTENDING OUT OF PAVED AREAS. INSTALLATIONS OF THESE OUTLETS IS ACCEPTABLE; HOWEVER, IF THE OUTLETS ARE INCORRECTLY LOCATED OR NOT USED FOR ANY REASON WHEN THE PROPERTY IS ACTUALLY DEVELOPED, THE DEVELOPER SHALL ABANDON THE OUTLETS AT THE CONNECTION TO THE ACTIVE MAIN IN ACCORDANCE WITH THE DISTRICT'S STANDARDS, AND AT THE DEVELOPER'S EXPENSE. APPROVAL OF THE VALVED OUTLET DOES NOT PROVIDE OR IMPLY A WATER COMMITMENT.

**WATER MAIN JOINT DEFLECTION (PVC 4"-24")**  
PVC PIPE SHALL BE DEFLECTED TO THE JOINT ONLY. THE MAXIMUM ALLOWABLE DEFLECTION SHALL BE ONE (1) DEGREE PER JOINT WITH A MINIMUM RADIUS OF CURVATURE OF 1,150 FEET, PER UDACS 2.06.01 AND 2.06.02.  
FOR CHANGES IN DIRECTION EXCEEDING THE MAXIMUM ALLOWABLE JOINT DEFLECTION, FITTINGS SHALL BE USED.

**NOTES:**  
1. ALL SEWER/STORM DRAINS CROSSING WATER LINES MUST CONFORM TO SECTION 2.19 OF THE UNIFORM DESIGN AND CONSTRUCTION STANDARDS FOR POTABLE WATER SYSTEMS (UDACS) FOR WATER AND STORM MAIN CROSSINGS AND CLEARANCES  
2. INSTALL PIPELINE MARKER BALLS IN TRENCH ABOVE EACH HORIZONTAL ELBOW FITTINGS, PER UDACS PLATE NO. 27.  
3. ADJUST WATER VALVE BOX TO FINISHED GRADE PER UDACS PLATE NO. 8. VALVE SHALL BE ACCESSIBLE AT ALL TIMES.

**CONTROLLED LOW STRENGTH MATERIAL (CLSM)**  
PROTECT WATERLINES IN PLACE. WHEREVER A WASTERLINE IS ABOVE A STORM DRAIN OR SEWER WHERE COMPACTION REQUIREMENT UNDER A WATERLINE CANNOT BE MET, BACKFILL TRENCH WITH CLASS II CONTROLLED LOW STRENGTH MATERIAL (CLSM) TO THE SPRINGLINE OF THE WATERLINE. THIS REQUIREMENT IS FOR STRUCTURAL SUPPORT ONLY. ADDITIONAL HEALTH REGULATIONS MAY APPLY PER UDACS 2.19.

**NOTE:**  
1. ALL PRIVATE STREETS ARE P.U.E., PUBLIC SEWER EASEMENTS, AND PUBLIC DRAINAGE EASEMENTS TO BE PRIVATELY MAINTAINED BY THE HOMEOWNERS ASSOCIATION.  
2. ALL PUBLIC DRAINAGE EASEMENTS TO BE PRIVATELY MAINTAINED BY THE HOMEOWNERS ASSOCIATION.

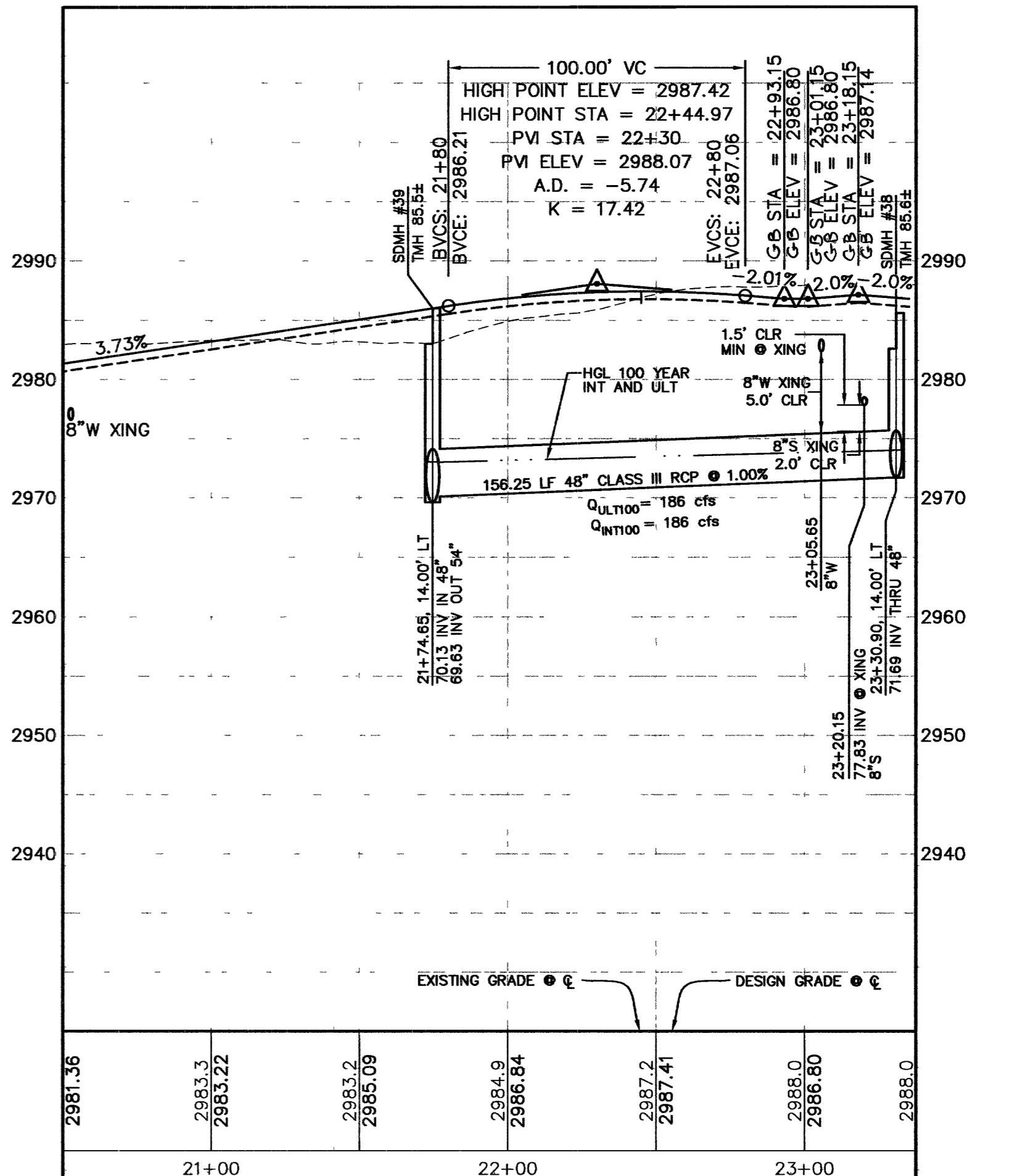
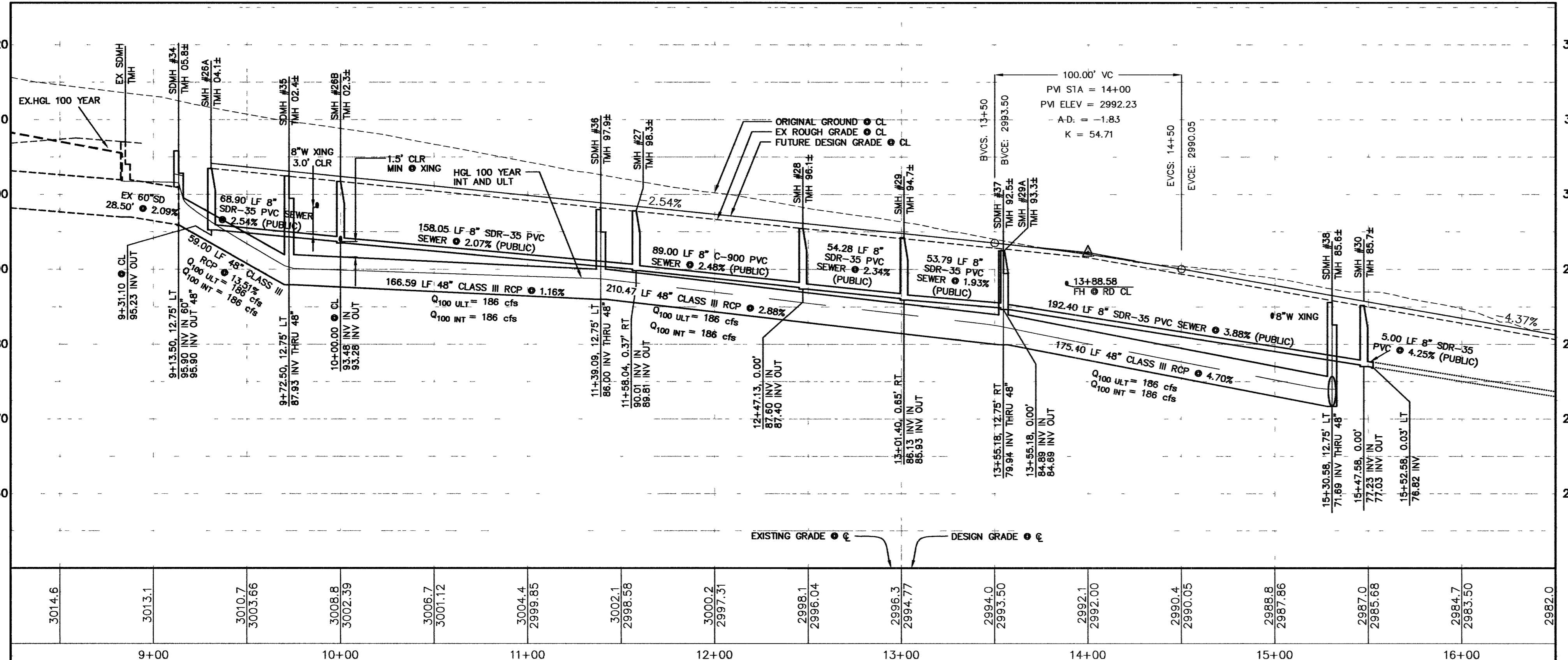


Call before you Dig.  
1-702-455-7511  
1-702-229-6611

Call before you Dig.  
1-800-227-2600

CALL BEFORE YOU DO OVERHEAD  
CALL 1-702-593-6111

APPROVED FOR CONSTRUCTION  
LAS VEGAS VALLEY WATER DISTRICT  
DATE: 11/15/15



85402

CLV DRAWING NO. 10744891-1

**MERTAGE HOMES**  
NORTHERN TERRACE - UNIT 1  
OFF-SITE IMPROVEMENTS V  
FUTURE BANDERA MOUNTAIN LANE PLAN AND PROFILE  
JOB NO. 819.002.X08

**G.C. WALLACE, INC.**  
Engineers/Planners/Surveyors  
1545 SOUTH PARKVIEW BLVD., LAS VEGAS, NEVADA 89145  
TELEPHONE: (702) 804-2000 • FAX: (702) 804-2399  
11 Northern Terrace, Unit 1, Las Vegas, NV 89101