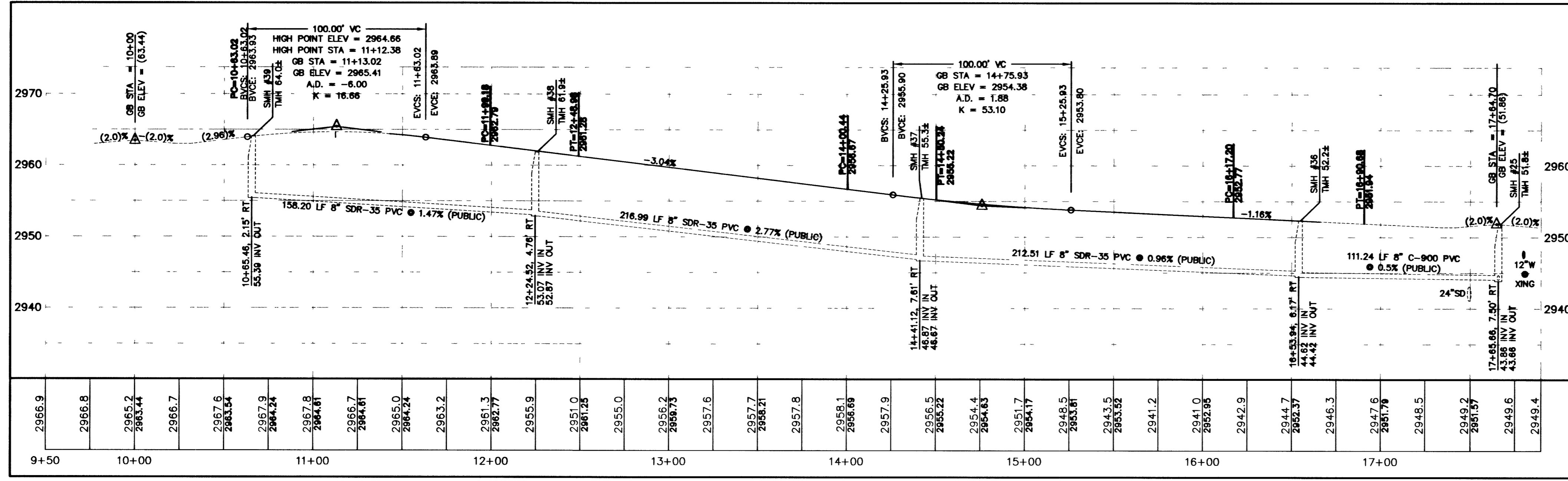


39' RESIDENTIAL STREET (PRIVATE W/P.U.E.)
(PRIVATE STREET)
NOT TO SCALE

GALLEON PEAK LANE (PRIVATE)

REFERENCE: SHEET C-33 OF
NORTHERN TERRACE, AT PROVIDENCE, UNIT 1 IMPROVEMENTS
BY G.C. WALLACE, INC. JOB NUMBER 819-002-X08
CLV # 107Y4891-1

NOTE:
1. ALL PRIVATE STREETS ARE P.U.E., PUBLIC SEWER EASEMENTS, AND PUBLIC DRAINAGE EASEMENTS TO BE PRIVATELY MAINTAINED BY THE HOMEOWNERS ASSOCIATION.
2. ALL PUBLIC DRAINAGE EASEMENTS TO BE PRIVATELY MAINTAINED BY THE HOMEOWNERS ASSOCIATION.



- CONSTRUCTION NOTES**
- INSTALL "ROLL" TYPE CURB & GUTTER (217/152)
 - INSTALL A.C. PAVEMENT PER TYPICAL STREET SECTION
 - ADJUST EXISTING MANHOLE TO GRADE
 - MATCH TO EXISTING IMPROVEMENT
 - ADJUST EXISTING GATE VALVE TO GRADE

Call before you Dig.
1-800-227-2600
UNDERGROUND SERVICE (USA)

CALL BEFORE YOU DO OVERHEAD
CALL 1-702-727-2929

Call before you UnderGround
1-702-455-7511
1-702-229-8611

BENCHMARK

DESC.	NAVD 88 DATUM	NAVD 86 DATUM
8LV99 RIVET AND PLATE IN CONCRETE CYLINDER AT THE NORTHWEST CORNER OF HUALAPAI WAY AND FARM ROAD.	2860.79 (FEET)	871.971 (METERS)

BASIS OF BEARINGS
N 88°21'18" E BEING THE SOUTH LINE OF THE SOUTHWEST QUARTER (SW 1/4) OF THE NORTHEAST QUARTER (NE 1/4) OF SECTION 13, T19S, R50E, W.D.M., AS SHOWN BY RECORD OF SURVEY ON FILE IN THE CLARK COUNTY, NEVADA RECORDER'S OFFICE IN FILE 124 OF SURVEYS AT PAGE 94.

PROJECT NO.	DESIGN:	CHECK:	PLOT DATE:	DATE:	REV.	DATE:	DESCRIPTION:

G.C. WALLACE COMPANIES
ENGINEERS | PLANNERS | SURVEYORS
1585 S. RAINBOW BOULEVARD - LAS VEGAS, NV 89146
T: 702.804.2000 - F: 702.804.2599 - G: WALLACE.COM

LAS VEGAS - SACRAMENTO - MESQUITE
I:\Northern Terrace\Media\Bent Impa\022p01.dwg
Glenn Blake

MERTAGE HOMES
NORTHERN TERRACE AT PROVIDENCE
GALLEON PEAK WAY
PLAN AND PROFILE