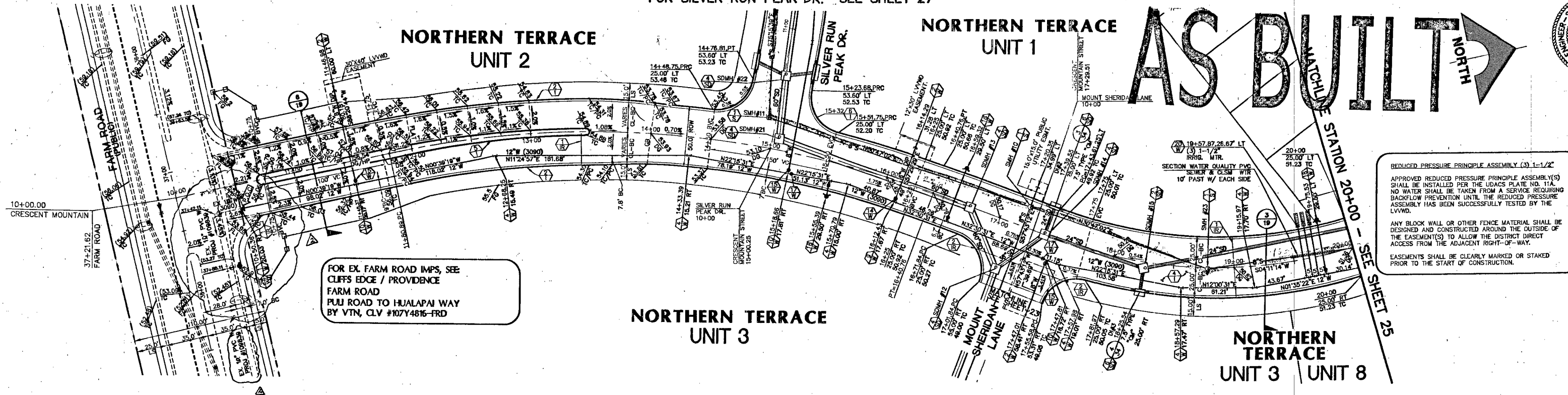
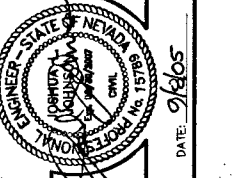


FOR SILVER RUN PEAK DR. SEE SHEET 27

NORTHERN TERRACE UNIT 2

NORTHERN TERRACE UNIT 1

AS BUILT



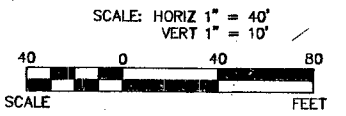
FOR EX. FARM ROAD IMPS, SEE CLIFFS EDGE / PROVIDENCE FARM ROAD PUJ ROAD TO HUALAPAI WAY BY VTN, CLV #107Y4816-FRD

REDUCED PRESSURE PRINCIPLE ASSEMBLY (3) 1-1/2" APPROVED REDUCED PRESSURE PRINCIPLE ASSEMBLY(S) SHALL BE INSTALLED PER THE UDACS PLATE NO. 11A. NO WATER SHALL BE TAKEN FROM A SERVICE REQUIRING BACKFLOW PREVENTION UNTIL THE REDUCED PRESSURE ASSEMBLY HAS BEEN SUCCESSFULLY TESTED BY THE LVWVD.

NORTHERN TERRACE UNIT 3

NORTHERN TERRACE UNIT 3 UNIT 8

CRESCENT MOUNTAIN STREET (PRIVATE)

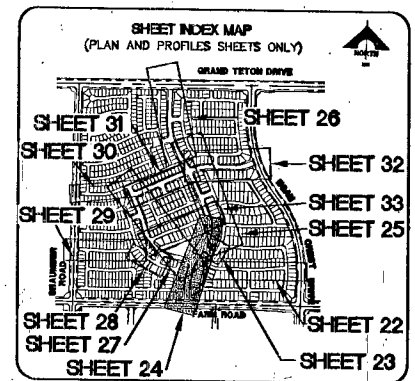


NOTE: 1. ALL PRIVATE STREETS ARE P.U.E., PUBLIC SEWER EASEMENTS, AND PUBLIC DRAINAGE EASEMENTS TO BE PRIVATELY MAINTAINED BY THE HOMEOWNERS ASSOCIATION. 2. ALL PUBLIC DRAINAGE EASEMENTS TO BE PRIVATELY MAINTAINED BY THE HOMEOWNERS ASSOCIATION.

CONDITIONAL APPROVAL OF VALVED OUTLET (6" AND LARGER) THE WATER PLANS SHOW ONE OR MORE VALVED OUTLETS EXTENDING OUT OF PAVED AREAS. INSTALLATIONS OF THESE OUTLETS IS ACCEPTABLE; HOWEVER, IF THE OUTLETS ARE INCORRECTLY LOCATED OR NOT USED FOR ANY REASON WHEN THE PROPERTY IS ACTUALLY DEVELOPED, THE DEVELOPER SHALL ABANDON THE OUTLETS AT THE CONNECTION TO THE ACTIVE MAIN IN ACCORDANCE WITH THE DISTRICT'S STANDARDS, AND AT THE DEVELOPER'S EXPENSE, APPROVAL OF THE VALVED OUTLET DOES NOT PROVIDE OR IMPLY A WATER COMMITMENT.

WATER MAIN JOINT DEFLECTION (PVC, 4"-24") PVC PIPE SHALL BE DEFLECTED AT THE JOINT ONLY. THE MAXIMUM ALLOWABLE DEFLECTION SHALL BE ONE (1) DEGREE PER JOINT WITH A MINIMUM RADIUS OF CURVATURE OF 1,150 FEET, PER UDACS 2.06.01 AND 2.06.02. FOR CHANGES IN DIRECTION EXCEEDING THE MAXIMUM ALLOWABLE JOINT DEFLECTION, FITTINGS SHALL BE USED.

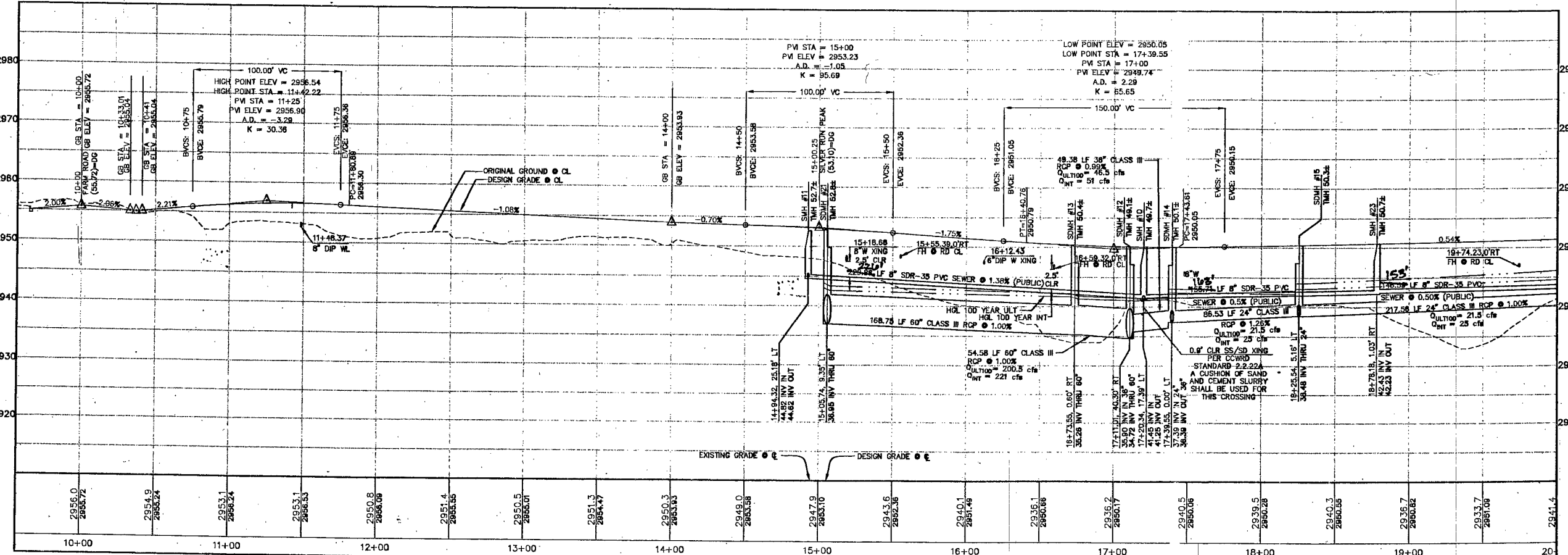
NOTES: 1. ALL SEWER/STORM DRAINS CROSSING WATER LINES MUST CONFORM TO SECTION 2.19 OF THE UNIFORM DESIGN AND CONSTRUCTION STANDARDS FOR POTABLE WATER SYSTEMS (UDACS) FOR WATER AND STORM MAIN CROSSINGS AND CLEARANCES. 2. INSTALL PIPELINE MARKER BALLS IN TRENCH ABOVE EACH HORIZONTAL ELBOW FITTING, PER UDACS PLATE NO. 27. 3. ADJUST WATER VALVE BOX TO FINISHED GRADE PER UDACS PLATE NO. 8. VALVE SHALL BE ACCESSIBLE AT ALL TIMES.



NOTE TO CONTRACTOR CONTRACTOR TO VERIFY ALL EXISTING SEWER & STORM DRAIN SIZES, INVERTS AND LOCATIONS. IF A DISCREPANCY EXISTS, CONTRACTOR TO NOTIFY THE ENGINEER PRIOR TO CONSTRUCTION.

BASIS OF BEARINGS N 88°21'10" E BEHIND THE SOUTH LINE OF THE SOUTHWEST QUARTER (SW 1/4) OF THE NORTHEAST QUARTER (NE 1/4) OF SECTION 13, T19S, R59E, M.D.M., AS SHOWN BY RECORD OF SURVEY ON FILE IN THE CLARK COUNTY, NEVADA RECORDER'S OFFICE IN FILE 124 OF SURVEYS AT PAGE 94.

Table with 3 columns: DESC., NAVD 88 DATUM, NAVD 88 DATUM. Row 1: RIVET AND PLATE IN CONCRETE CYLINDER AT THE NORTHWEST CORNER OF HUALAPAI WAY AND FARM ROAD. Row 2: 2860.79 (FEET). Row 3: 871.971 (METERS).



Call before you Dig. 1-800-227-2600

CALL BEFORE YOU DIG OVERHEAD. CALL 1-702-593-6111

Call before you UnderGround. 1-702-455-7511, 1-702-229-6611

APPROVED FOR CONSTRUCTION. LAS VEGAS VALLEY WATER DISTRICT. DATE: 3-23-06. PROJ. NO. 111501

Handwritten notes: 116608, 85396 & 89253 & 2

CLV DRAWING NO. 107Y4891-1

AS BUILT

G.C. WALLACE, INC. Engineers/Planners/Surveyors. 1555 SOUTH RAINBOW BLVD./AS VEGAS, NEVADA 89146. TELEPHONE: (702) 804-2000 • FAX: (702) 804-2289

MERTAGE HOMES NORTHERN TERRACE - UNIT 1 CRESCENT MOUNTAIN STREET PLAN AND PROFILE STATION 10+00 TO 20+00

DRAWING C-24 24 OF 39 S

JOB NO. 819.002X08