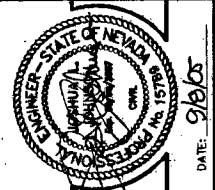
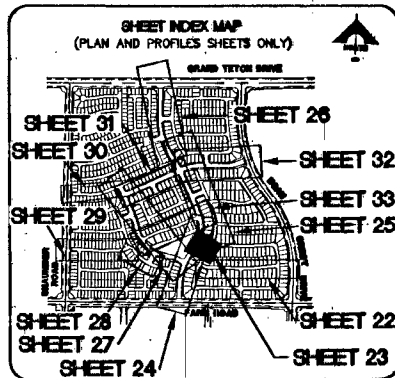


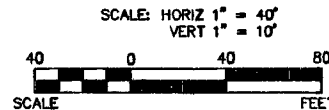
AS BUILT



| |
|----------------|
| DATE: 9/16/05 |
| DATE: 11-15-05 |
| DATE: 12-15-05 |
| DATE: 1-15-06 |
| DATE: 2-15-06 |
| DATE: 3-15-06 |
| DATE: 4-15-06 |
| DATE: 5-15-06 |
| DATE: 6-15-06 |
| DATE: 7-15-06 |
| DATE: 8-15-06 |
| DATE: 9-15-06 |
| DATE: 10-15-06 |
| DATE: 11-15-06 |
| DATE: 12-15-06 |



BASIS OF BEARINGS
 N 08°21'16" E BEING THE SOUTH LINE OF THE SOUTHWEST QUARTER (SW 1/4) OF THE NORTHEAST QUARTER (NE 1/4) OF SECTION 15, T19S, R59E, M.D.M., AS SHOWN BY RECORD OF SURVEY ON FILE IN THE CLARK COUNTY, NEVADA RECORDER'S OFFICE IN FILE 124 OF SURVEYS AT PAGE 94.



| BENCHMARK | | |
|---|----------------|------------------|
| DESC. | NAD 83 DATUM | NAD 83 DATUM |
| RIVET AND PLATE IN CONCRETE CYPINDER AT THE NORTHWEST CORNER OF HUALAPAI WAY AND FARM ROAD. | 2880.78 (FEET) | 871.971 (METERS) |

NOTE:
 1. ALL PRIVATE STREETS ARE P.U.E., PUBLIC SEWER EASEMENTS, AND PUBLIC DRAINAGE EASEMENTS TO BE PRIVATELY MAINTAINED BY THE HOMEOWNERS ASSOCIATION.
 2. ALL PUBLIC DRAINAGE EASEMENTS TO BE PRIVATELY MAINTAINED BY THE HOMEOWNERS ASSOCIATION.

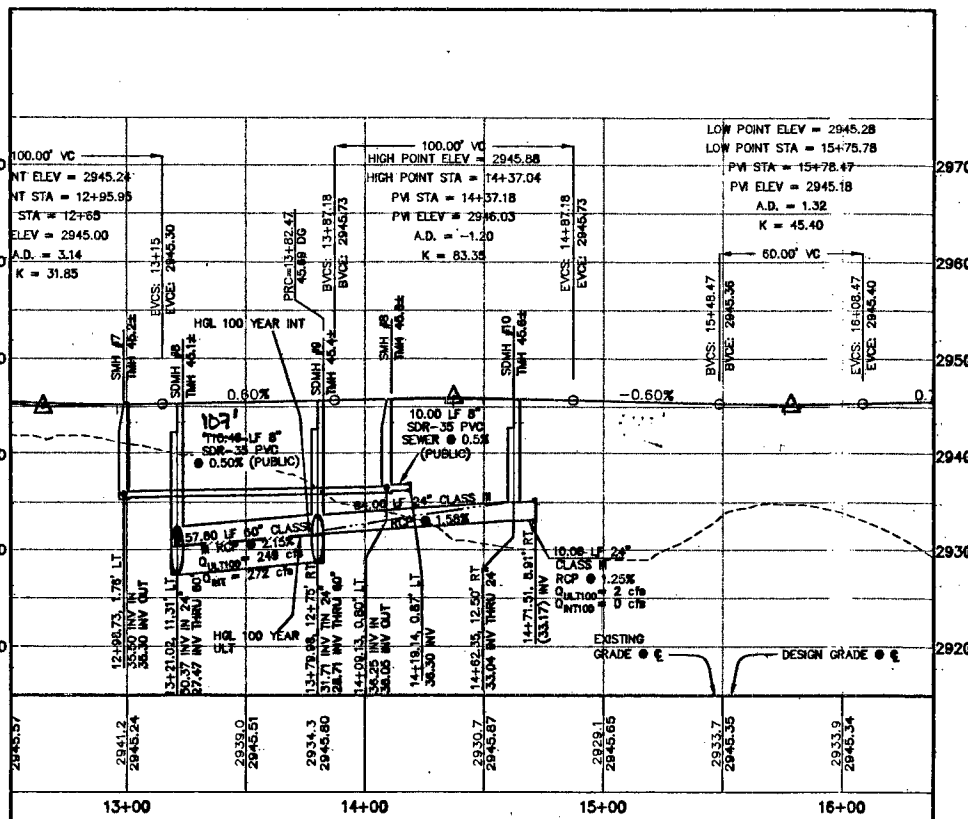
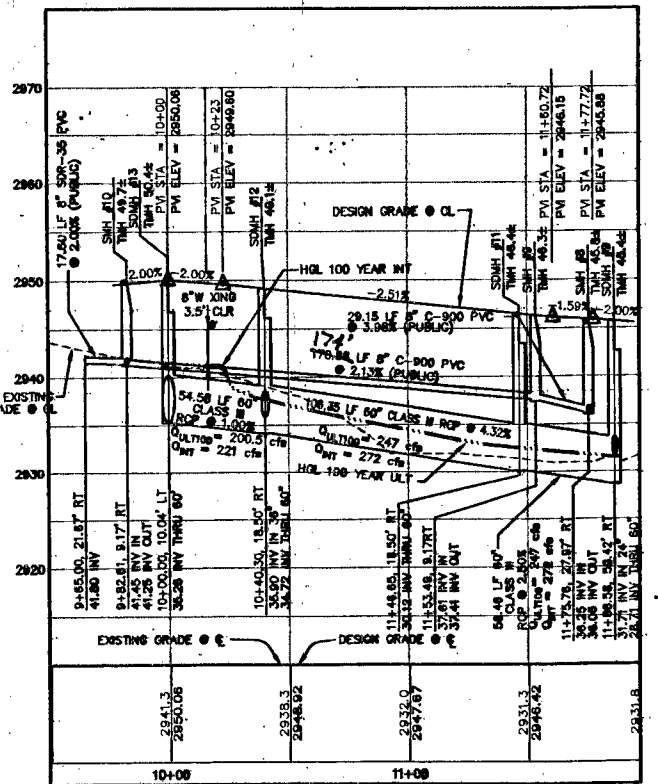
Call before you Dig.
 1-702-455-7511
 1-702-229-6611

Call before you Dig.
 1-800-227-2600

Call before you Dig.
 1-702-593-6111

FUTURE MOUNT SHERIDAN LANE (PRIVATE)

FUTURE SUGARLOAF PEAK STREET (PRIVATE)



116607

CLV DRAWING NO. 107Y4891-1

MERTAGE HOMES
 NORTHERN TERRACE - UNIT 1
 OFF-SITE IMPROVEMENTS I
 FUTURE SUGARLOAF PEAK STREET PLAN AND PROFILE
 DRAWING: C-23
 23 OF 39 SHEETS

G. C. WALLACE, INC.
 Engineers/Planners/Surveyors
 1100 North Central Expressway, Suite 1000
 Las Vegas, NV 89102-3000
 (702) 800-2600 FAX (702) 804-2289

JOB NO. 881002.X08