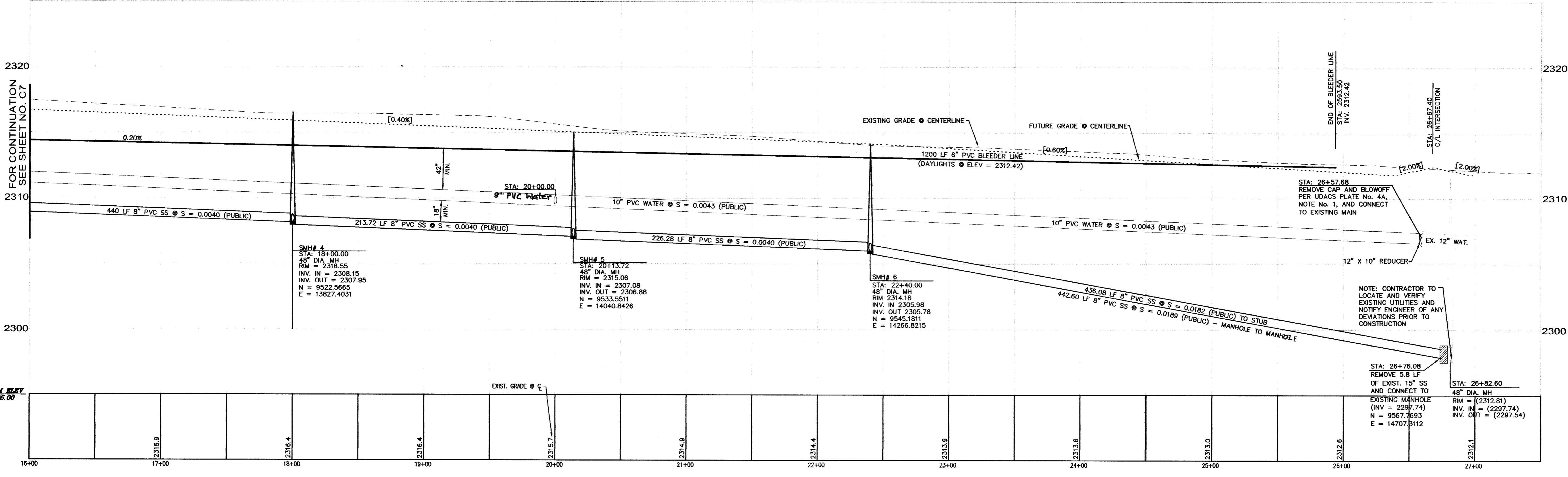
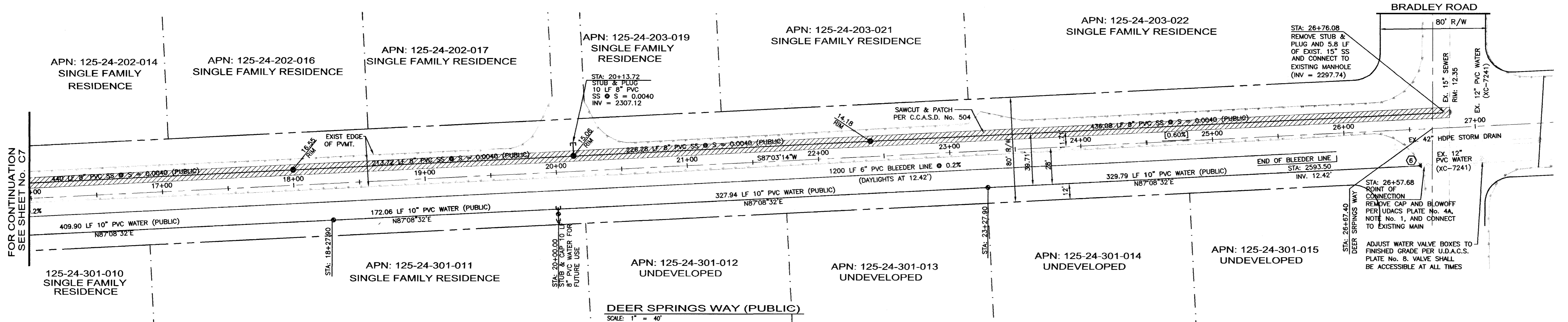


DESIGNED	CHECKED	DATE
PROJ. NO.	FILED	DESCRIPTION
DATE	NO.	DESCRIPTION

STREET PLAN AND PROFILE
 DEER SPRINGS WAY - STA: 16+00 TO 27+50
 NWC LEON AND DEER SPRINGS
 BRAMBLE HOMES
 LAS VEGAS, NEVADA
 CLARK COUNTY

AMTI • SUNBELT LLP
 ENGINEERING • PLANNING • SURVEYING
 720 SUSANNA WAY
 HENDERSON, NV 89015
 PHONE (702) 242-9908
 FAX (702) 242-9915



DEER SPRINGS WAY (PUBLIC)
 HORIZONTAL: 1" = 40'
 VERTICAL: 1" = 4'

- CONSTRUCTION NOTES:**
- CONSTRUCT SIDEWALK PER USD DWG. NO. 234.
 - CONSTRUCT TYPE 1" CURB & GUTTER PER USD DWG. NO. 216.
 - CONSTRUCT SIDEWALK RAMP PER USD 235 CASE 1.
 - CONSTRUCT 8" VALLEY GUTTER PER USD 228.
 - CONTRACTOR TO COORDINATE WITH RESPONSIBLE UTILITY FOR RELOCATION/REMOVAL OF EXISTING POWER POLES WHERE CONFLICT APPLIES.
 - INSTALL 12" x 10" REDUCER.

NOTE:
 ALL PRIVATE STREETS ARE P.U.E.'S PUBLIC SEWER EASEMENTS AND PUBLIC DRAINAGE EASEMENTS TO BE PRIVATELY MAINTAINED BY H.O.A.

CONTROLLED LOW STRENGTH MATERIAL (CLSM)
 PROTECT WATERLINES IN PLACE. WHEREVER A WATERLINE IS ABOVE A STORM DRAIN OR SEWER WHERE COMPACTION REQUIREMENTS UNDER A WATERLINE CANNOT BE MET, BACKFILL TRENCH WITH CLASS 1 / CLASS II CONTROLLED LOW STRENGTH MATERIAL (CLSM) TO THE SPRINGLINE OF THE WATERLINE. THIS REQUIREMENT IS FOR STRUCTURAL SUPPORT ONLY. ADDITIONAL HEALTH REGULATIONS MAY APPLY PER UDACS 2.19.

LEGEND

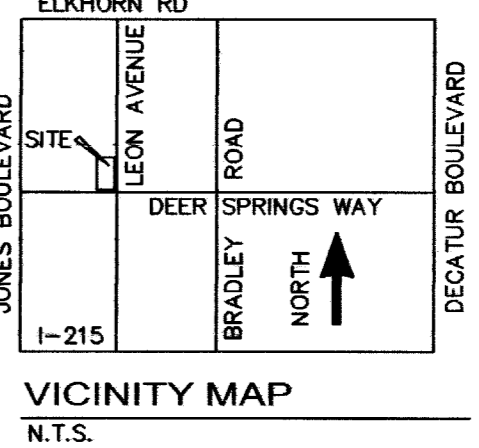
EXISTING	PROPOSED
	CENTERLINE
	RIGHT OF WAY
	PROPERTY LINE
	EDGE OF PAVEMENT
	CURB & GUTTER
	GRADE BREAK
	WALL TYPE AS NOTED
	EXISTING NATURAL GROUND
	AC PAVEMENT
	FINISH GRADE
	TOP OF CURB
	EDGE OF PAVEMENT
	CURVE DATA
	GRADING NOTES
	SANITARY SEWER MANHOLE
	STORM DRAIN MANHOLE
	GRADES
	SAWCUT AND PATCH
	EX. POWER POLE

APN: 125-24-201-003, 004, 005

BASIS OF BEARINGS
 NORTH 87°03' 14" EAST, BEING THE SOUTH LINE OF THE SOUTHWEST QUARTER (SE 1/4) OF THE SOUTHWEST QUARTER (SW 1/4) OF THE NORTHWEST QUARTER (NW 1/4) OF SECTION 24, TOWNSHIP 19 SOUTH, RANGE 60 EAST, M.D.M., CITY OF LAS VEGAS, CLARK COUNTY, NEVADA, AS SHOWN IN FILE 67 PAGE 22 OF SURVEYS ON FILE IN THE CLARK COUNTY, NEVADA RECORDERS OFFICE.

PROJECT BENCHMARK
 CITY OF LAS VEGAS BENCHMARK ID# BLV80 24W6: RIVET AND ROUND PLATE IN CONCRETE CYLINDER, NORTHEAST CORNER OF DEER SPRINGS WAY AND LEON AVENUE ±2" NORTHEAST OF TELEPHONE POLE #19620T.
 ELEVATION = 706.695 METERS (NAV8 88)
 = 2318.55 FEET (NAV8 88)

LEGAL DESCRIPTION
 THAT PORTION OF THE SOUTHWEST QUARTER (SW 1/4) OF THE NORTHWEST QUARTER (NW 1/4) OF SECTION 24 TOWNSHIP 19 SOUTH, RANGE 60 EAST, M.D.M., IN THE COUNTY OF CLARK, STATE OF NEVADA, DESCRIBED AS FOLLOWS: PARCELS TWO (2), THREE (3), FOUR (4) AS SHOWN BY MAP THEREOF IN FILE 67 OF PARCEL MAPS, PAGE 22, IN THE OFFICE OF THE COUNTY RECORDER, CLARK COUNTY, NEVADA.



APPROVAL

[Signature]
 LAS VEGAS VALLEY WATER DISTRICT
 PROJ: H100578

11/24/04
 DATE:

DISCLAIMER NOTE

Avoid cutting underground utility lines. If a conflict, Call before you Dig. 1-800-227-2600 UNDERGROUND SERVICE, USA.

Avoid hitting underground ground traffic signal systems and street light system conduits. Call before you UnderGround. 1-702-227-2929 NEVADA POWER EMPLOYERS AND SAFETY SERVICES DEPARTMENT.

Avoid hitting underground clear concrete traffic enclosures and LAS VEGAS AREA COMPUTERIZED TRAFFIC SYSTEM. Call before you UnderGround. 1-702-455-7511

UTILITY LOCATIONS SHOWN HEREON ARE APPROXIMATE ONLY. IT SHALL BE THE CONTRACTOR'S RESPONSIBILITY TO DETERMINE THE EXACT HORIZONTAL AND VERTICAL LOCATION OF ALL EXISTING UNDERGROUND OR OVERHEAD UTILITIES PRIOR TO COMMENCING CONSTRUCTION. NO REPRESENTATION IS MADE THAT ALL EXISTING UTILITIES ARE SHOWN HEREON. THE ENGINEER ASSUMES NO RESPONSIBILITY FOR UTILITIES NOT SHOWN OR UTILITIES NOT SHOWN IN THEIR PROPER LOCATION.

