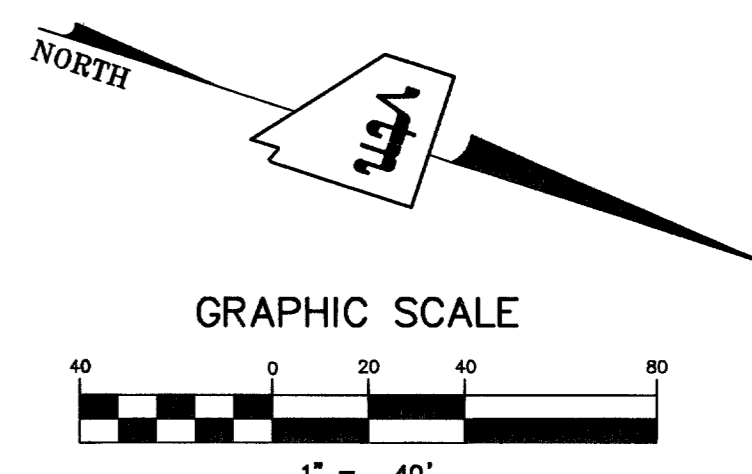
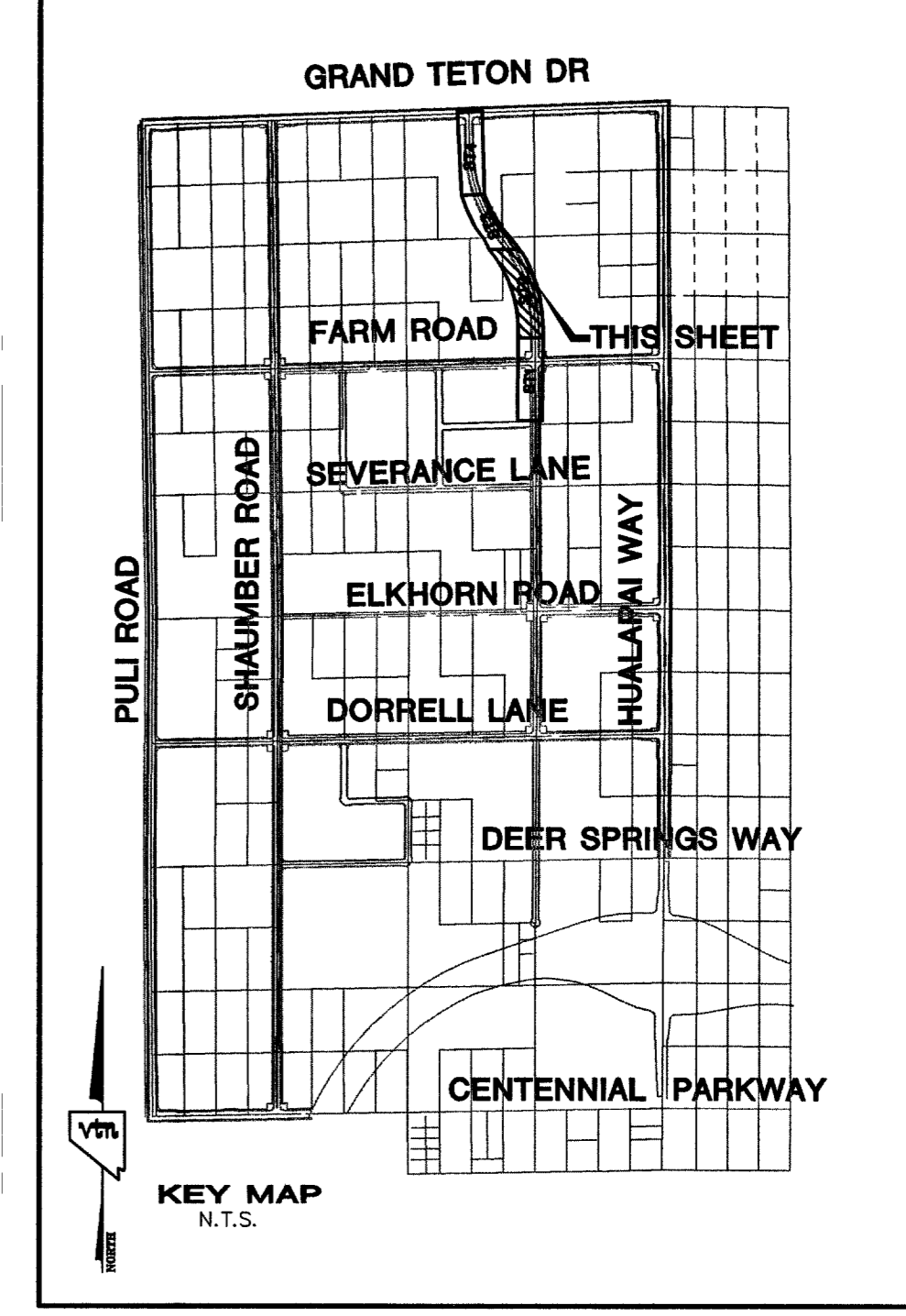
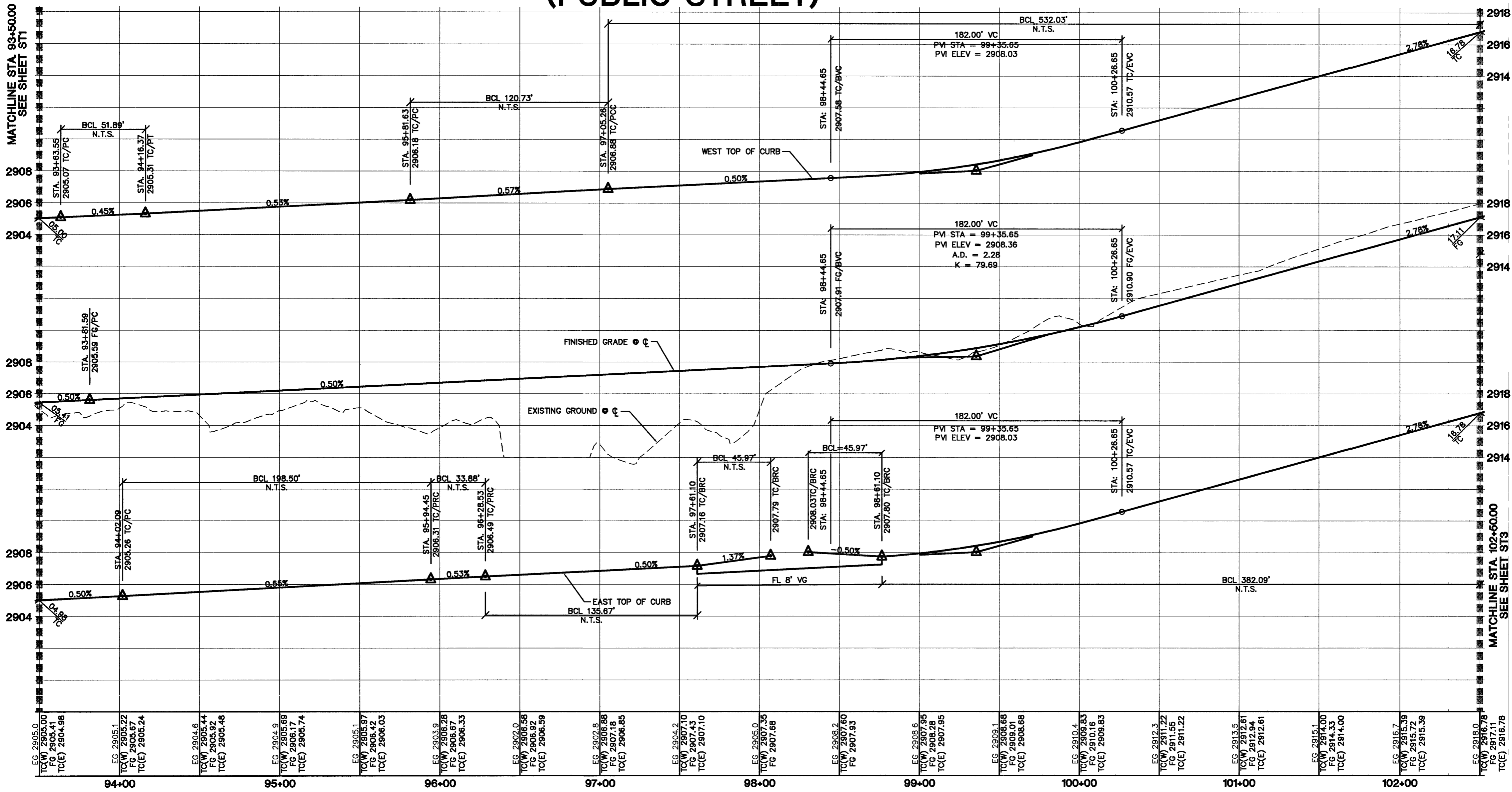


EGAN CREST WAY (PUBLIC STREET)



CONTRACTOR NOTE:
CONTRACTOR SHALL VERIFY HORIZONTAL AND VERTICAL LOCATION OF EXISTING UTILITIES AND NOTIFY THE DESIGN ENGINEER IMMEDIATELY OF ANY DISCREPANCIES PRIOR TO CONSTRUCTION.

CURVE	LENGTH	RADIUS	TANGENT	DELTA
C1	51.89'	800.00'	25.96'	03°43'00"
C2	198.50'	1000.00'	99.58'	11°22'23"
C3	33.88'	1000.00'	16.94'	01°55'27"
C4	120.73'	800.00'	60.48'	08°35'47"
C5	135.67'	1535.00'	67.88'	05°03'50"
C6	532.03'	1465.00'	268.98'	20°48'28"
C7	45.97'	30.00'	28.87'	87°47'37"
C8	382.09'	1535.00'	192.04'	14°15'43"

NO.	"A"	"B"	CASE
1	8.0'	8.0'	II
2	8.0'	8.0'	II

"I CERTIFY THAT THIS PLAN IS IN CONFORMANCE WITH THE APPROVED DRAINAGE STUDY ON FILE AT CITY OF LAS VEGAS FOR THIS PROJECT." DS3671
DARRIN PAPPA NO. 15815 DATE

Avoid cutting underground utility lines it's costly.
Call before you Dig
1-800-227-2600

Avoid overhead power lines it's costly.
Call before you Overhead
1-702-227-2929

Call before you Underground
1-702-455-7511
CLARK COUNTY TRAFFIC OPERATIONS AND
1-702-229-6611
LAS VEGAS AREA COMPUTERIZED TRAFFIC SYSTEM

AVOID HITTING UNDERGROUND TRAFFIC SIGNAL SYSTEM AND STREET LIGHT SYSTEM CONDUITS IT'S COSTLY!
CALL BEFORE YOU DO UNDERGROUND

BASIS OF BEARINGS
THE BASIS OF BEARINGS FOR THIS PROJECT IS NORTH 00°08'16" EAST BEING THE EAST LINE OF THE NORTHWEST QUARTER (NE 1/4) OF THE SECTION 24, TOWNSHIP 19 SOUTH, RANGE 59 EAST, M.D.M., CLARK COUNTY, NEVADA, AS SHOWN ON A RECORD OF SURVEY ON FILE IN THE CLARK COUNTY, NEVADA, RECORDER'S OFFICE IN FILE 123 AT PAGE 32.

PROJECT BENCHMARK
PROJECT DATUM: NORTH AMERICAN VERTICAL DATUM OF 1988 (NAV88)
CLARK COUNTY VERTICAL CONTROL: 1000-6N6
NAV88 ELEVATION: 787.794 METERS (2584.62 FEET)
RIVET AND SQUARE ALUMINUM PLATE IN A CONCRETE CYLINDER, LOCATED 25' SOUTH & 50' EAST OF GRAND CANYON DRIVE AND RED COACH AVENUE, 1' WEST OF ELECTRICAL VAULT.

CITY OF LAS VEGAS BENCHMARK
DATUM: NORTH AMERICAN VERTICAL DATUM OF 1988 (NAV88)
CITY OF LAS VEGAS BENCHMARK: BLV99-13SES
NAV88 ELEVATION: 868.606 METERS (2853.03 FEET)
RIVET AND PLATE IN CONCRETE CYLINDER NW CORNER OF HUALAPAI AND ELKHORN

NOTE: ADD 0.34' TO ABOVE CITY OF LAS VEGAS BENCHMARK BLV99-13SES TO MATCH ORIGINAL PROJECT BENCHMARK, CLARK COUNTY BENCHMARK 1000-6N6 (2584.62 FEET) AS SHOWN ON RECORD OF SURVEY FILE 124 PAGE 94.

7	6	5	4	3	2	1	
REV	DATE	BY	REVISION				
CLIFFS EDGE LLC 3485 CLIFF SHADOWS PARKWAY, SUITE 290 LAS VEGAS, NEVADA 89129 (702) 777-1221							CITY OF LAS VEGAS, NEVADA 2727 SOUTH RAINBOW BOULEVARD LAS VEGAS, NEVADA 89146-5148 PH. (702) 874-7550 FAX (702) 362-2597 nevada CONSULTING ENGINEERS • PLANNERS • LAND SURVEYORS
STREET PLAN & PROFILE STA 93+50.00 TO 102+50.00							EGAN CREST WAY NORTH CLIFFS EDGE / PROVIDENCE FARM ROAD TO GRAND TETON
DRAWN BY:	DESIGNED BY:	CHECKED BY:	PROJECT NO.:	SCALE: 1"=40' HORIZ. 1"=4' VERT.			SHEET
MG/TP	B.F.	L.M.	5899				5 OF 17 SHEETS
DRAWING NO. 1074816-ECN							