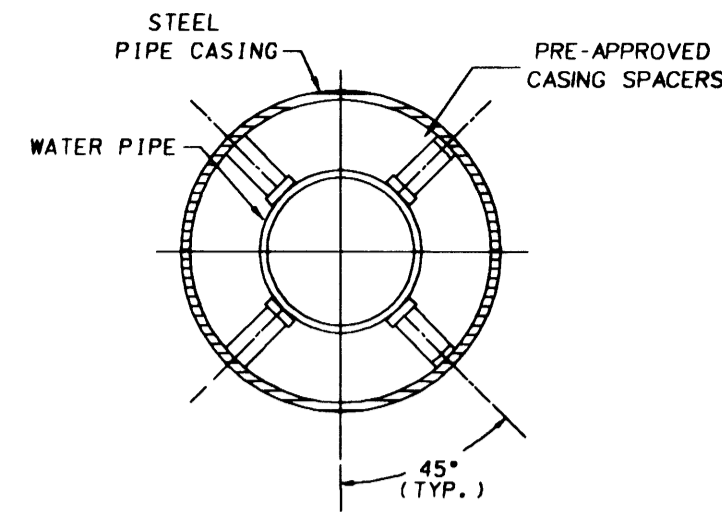


Call before
you Dig
1-800-227-2600

Call before
you Overhead
1-800-593-6111

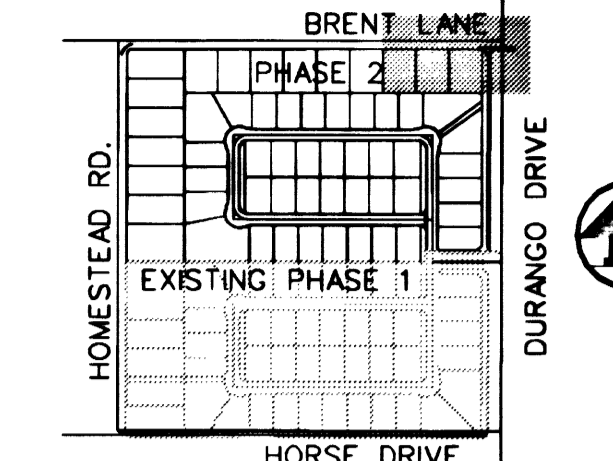
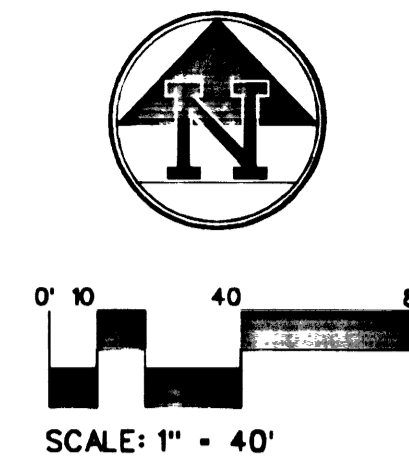


- NOTES**
- STEEL PIPE CASING SYMMETRICAL ABOUT WATER MAIN CENTERLINE.
 - PRE-APPROVED CASING SPACERS AND PRE-APPROVED END SEALS INSTALLED PER MANUFACTURER'S SPECIFICATIONS. (REDWOOD SKIDS NOT ALLOWED. UOACS SECTION 3.26 NOT APPLICABLE). USE A "CENTERED" CONFIGURATION AND PROVIDE THE MANUFACTURER WITH THE FOLLOWING:
 - PIPE OD
 - CASING ID
 - CASING LENGTH

- STEEL PIPE CASING SHALL BE FABRICATED FROM A MIN. OF 1/4" THICK STEEL PLATES, CONFORMING TO THE REQUIREMENTS OF ASTM A283, GRADE B, C, OR D. ALL JOINTS SHALL BE WELDED. INTERIOR JOINTS SHALL BE GROUNDED TO SMOOTH FINISH. ALL WELDING SHALL BE PERFORMED IN ACCORDANCE WITH ANNA (201) "AWMA" STANDARD FOR FABRICATED ELECTRICALLY WELDED STEEL WATER PIPE. COATINGS FOR STEEL CASINGS ARE NOT REQUIRED.
- PIPE CASING SHALL BE LAID TRUE TO THE LINE AND GRADE WITH NO BENDS OR CHANGES IN GRADES FOR THE FULL LENGTH OF THE CASING.
- THE PIPE SHALL BE SUPPORTED AT EACH END OF EACH JOINT WITH SPACERS AFTER INSTALLATION OF THE PIPE. THE CASING SHALL BE SEALED AT BOTH ENDS WITH CASING AND SEALS.

TYPICAL CASING SECTION

NOT TO SCALE



BENCHMARK

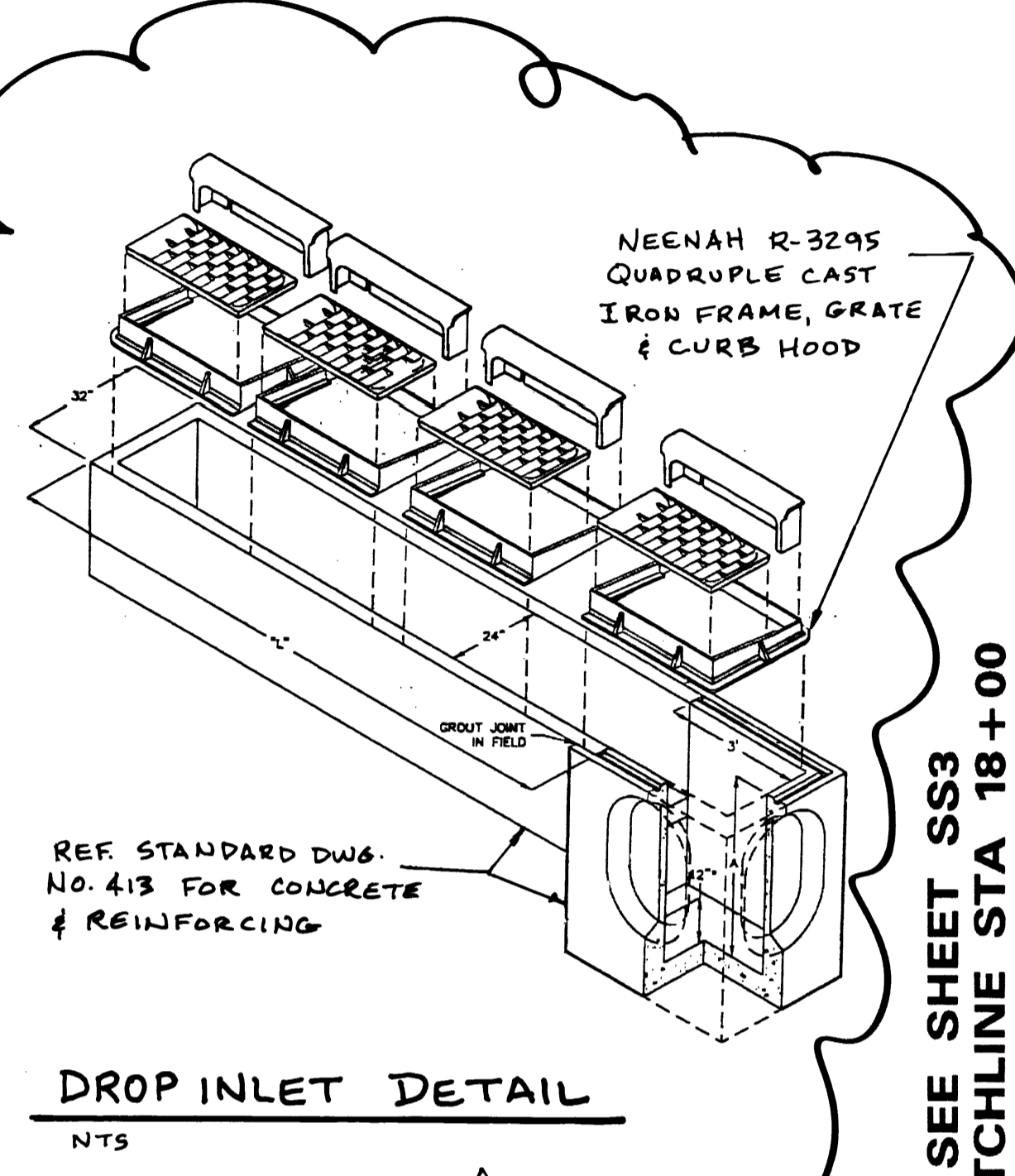
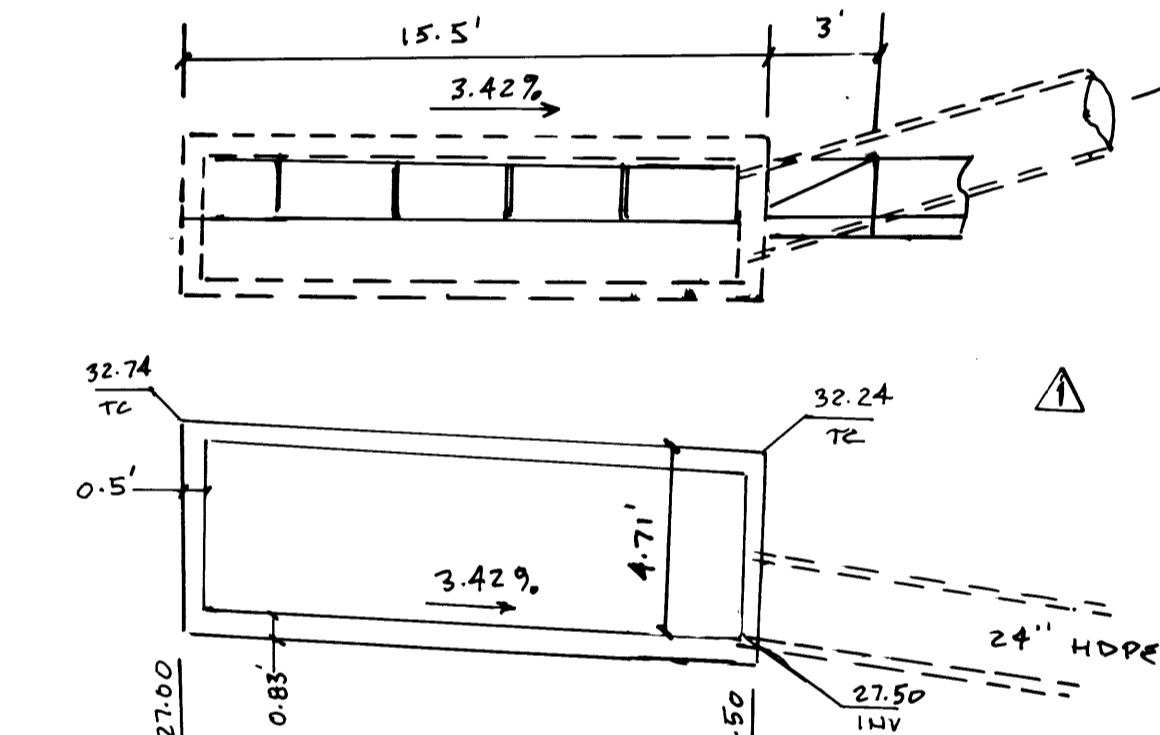
C.I.V. BENCHMARK: 1LV90-8NES
BLM BRASS CAP AT THE INTERSECTION OF
DURANGO DRIVE AND IRON MOUNTAIN ROAD
NAVD 1988 ELEV 771.9689 METERS (2532.70 FEET)

SEWER CONSTRUCTION NOTES

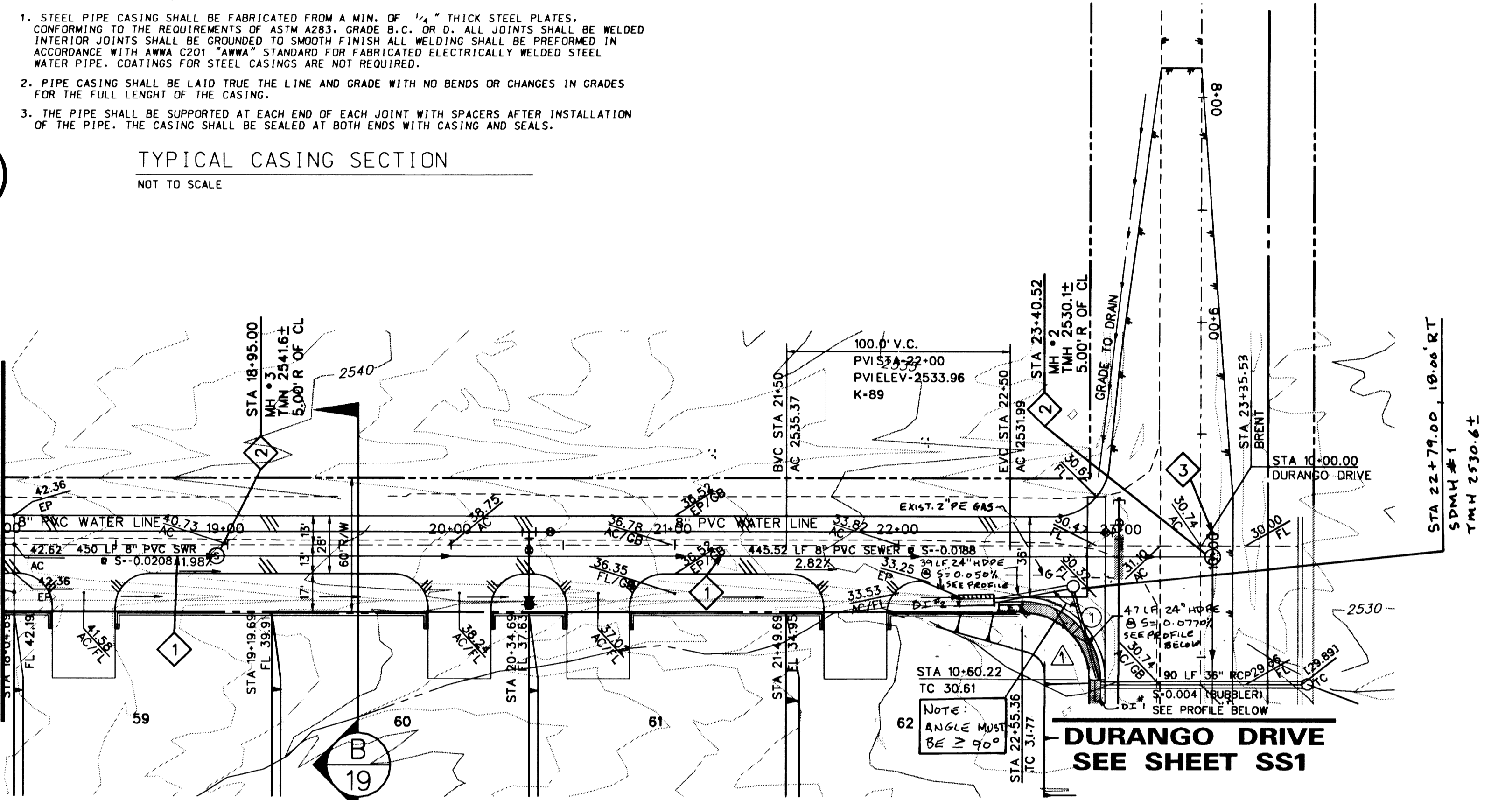
- INSTALL 8" PVC SANITARY SEWER LINE
- INSTALL 48" SANITARY SEWER MANHOLE PER DESIGN AND CONSTRUCTION STANDARDS FOR WASTEWATER COLLECTION SYSTEMS PLATE S0-1
- INSTALL 18" CAP

BC CURVE DATA

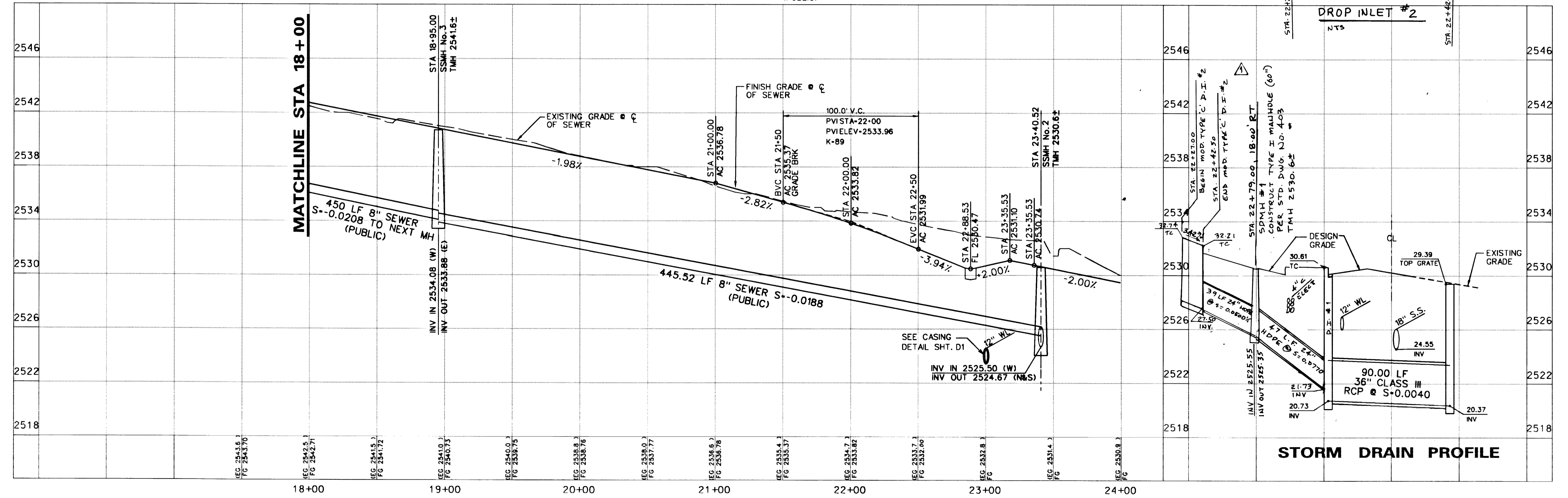
NO.	RADIUS	DELTA	LENGTH	TANGENT
1	0035.00'	090°09'21"	0055.07'	0035.10'



SEE SHEET SS3
MATCHLINE STA 18+00



BRENT LANE (PUBLIC)



STORM DRAIN PROFILE

RICHMOND AMERICAN HOMES OF NEVADA INC.
7250 WEST PEAK ST.
SUITE 212
LAS VEGAS, NEVADA 89128

PLAN AND PROFILE BRENT LANE STA 18+00 TO 23+35.53

MYSTIC VALLEY PHASE II

SEAL
REGISTERED PROFESSIONAL ENGINEER
STATE OF NEVADA
JAMES W. LELAND
CIVIL ENGINEER
NO. 49372
EXPIRES 12/31/2010

SHEET
SS2
12 OF 19 SHEETS
DRAWING NO.
1074-4599-2