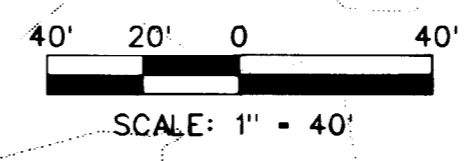


Call before you Dig 1-800-227-2600
 Call before you Overhead 1-702-593-6111

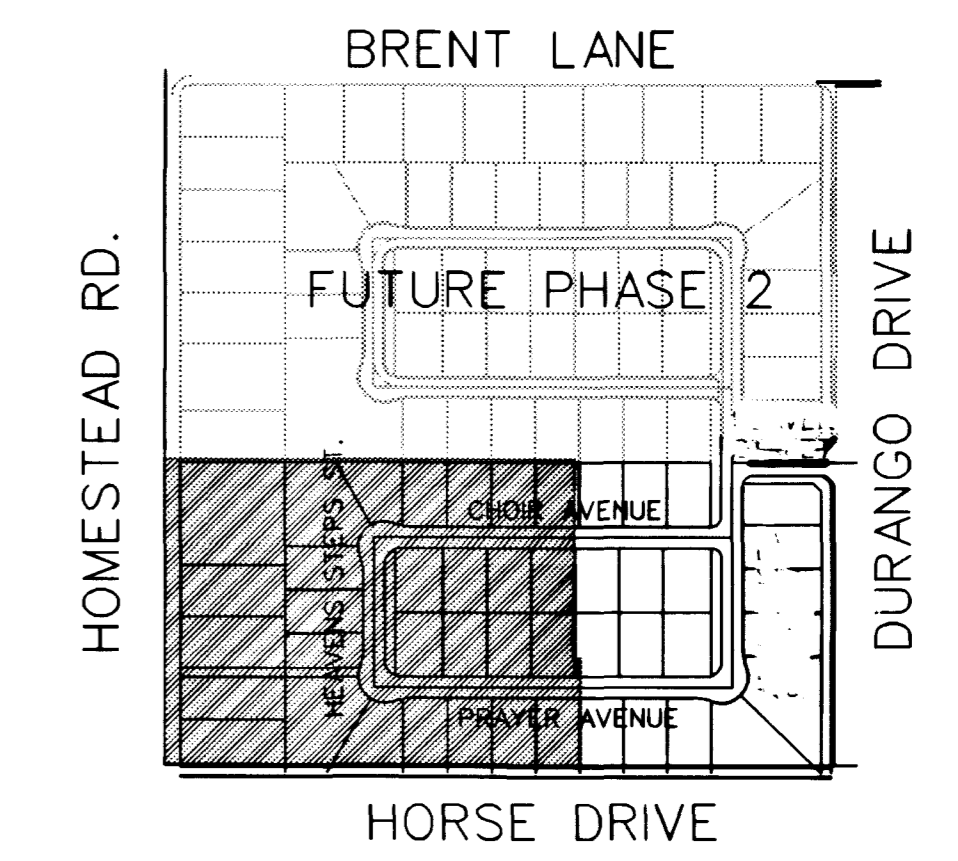


BASIS OF BEARING

NORTH 0015'13" EAST BEING THE BEARING OF THE EAST LINE OF THE NORTHEAST QUARTER (NE 1/4) OF THE NORTHEAST QUARTER (NE 1/4) OF THE NORTHEAST QUARTER (NE 1/4) OF SECTION 8, TOWNSHIP 19 SOUTH, RANGE 60 EAST, M.D.M. CLARK COUNTY, NEVADA AS SHOWN ON THE MAP IN FILE 87, OF SURVEYS, PAGE 83, OFFICIAL RECORDS OF CLARK COUNTY, NEVADA.

BENCHMARK

C.L.V. BENCHMARK: 1LV90-BNES
 BLM BRASS CAP AT THE INTERSECTION OF DURANGO DRIVE AND IRON MOUNTAIN ROAD
 NAVD 1988 ELEV 771.9689 METERS (2532.70 FEET)



LOCATION MAP

GRADING CONSTRUCTION NOTES

- 1 CONSTRUCT 2" AC PAVING OVER 4" TYPE II BASE ON 6" TYPE I BASE PER STANDARD DWG. NO. 207.
- 2 REMOVE EXISTING PAVEMENT AND CONSTRUCT 4" AC PAVING OVER 4" TYPE II AGGREGATE BASE ON 9" TYPE I OR II AGGREGATE BASE PER C.C. STD. DWG. #203.
- 3 CONSTRUCT "L" TYPE CURB PER CLARK COUNTY AREA STD. DWG. 216
- 4 CONSTRUCT 30" ROLL CURB PER CLARK COUNTY STD. DWG. #217A
- 5 CONSTRUCT RETAINING WALL PER CITY OF LAS VEGAS DEPT. OF BUILDING AND SAFETY STANDARDS
- 6 CONSTRUCT 8" WIDE CROSS GUTTER PER CLARK COUNTY AREA STD. DWG. NO. 228
- 7 CONSTRUCT 4" THICK CONCRETE SIDEWALK PER CLARK COUNTY AREA STD. DWG. NO. 234.
- 8 SIDEWALK UNDERDRAIN PER CLARK COUNTY AREA STD. DWG. NO. 236 (CONSTRUCTED BY SPRING MTN. RANCH PROJECT PER PLANS BY V.T.N.)
- 9 NOT USED
- 10 INSTALL WROUGHT IRON CRASH GATE PER CLV STANDARDS
- 11 CONSTRUCT FLOODWALL PER CITY OF LAS VEGAS DEPT. OF BUILDING AND SAFETY STANDARDS
- 12 CONSTRUCT SIDEWALK RAMP PER CLARK COUNTY STD. DWG. NO 235, CASE 1, "A" - 8.0', "B" - 8.0'
- 13 10.00" TYPE-C D.I., 24" BUBBLER 34.01 TC, 29.16 INV. OUT (WITH 2 GRATES) (CONSTRUCTED BY SPRING MTN. RANCH PROJECT PER PLANS BY V.T.N.)

I CERTIFY THAT THIS GRADING PLAN CONFORMS TO THE APPROVED DRAINAGE STUDY FOR THIS SITE ON FILE AT THE CITY OF LAS VEGAS.
James W. Leland 4/26/99
 JAMES W. LELEND P.E. 4932 DATE

RICHMOND AMERICAN HOMES OF NEVADA
 7250 WEST PEAK, STE. 212
 LAS VEGAS, NV 89128
 (702) 440-8800

GRADING PLAN (WEST HALF)

MYSTIC VALLEY PHASE I

SHEET

11/4/98

11/4/98

4/26/99

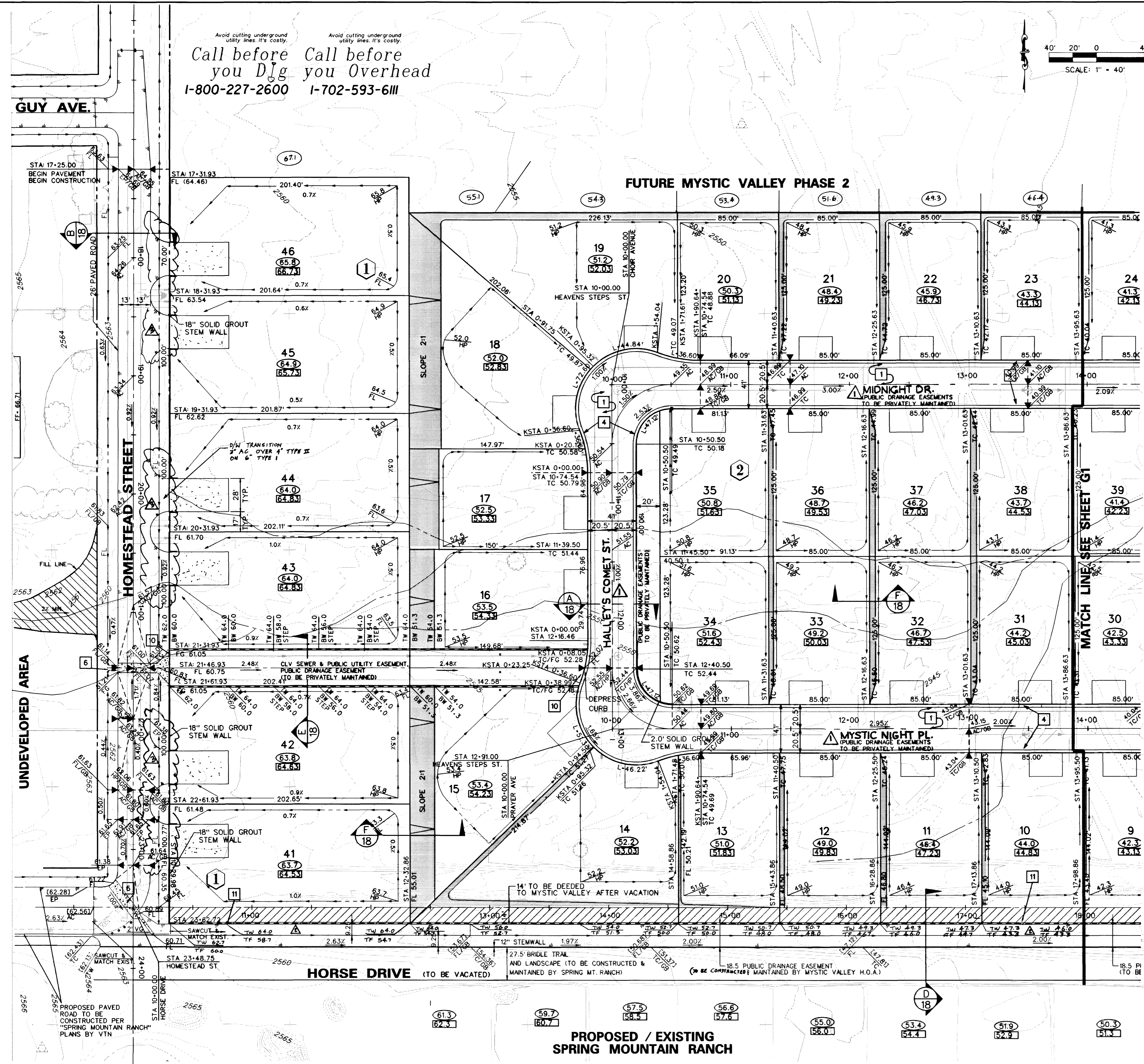
SCALE: 1" = 40'

PROJECT NO: 98-9031-03

SHEET G2

8 OF 18 SHEETS

DRAWING NO. 1074-4599-1



15313 17018 17881 18349



