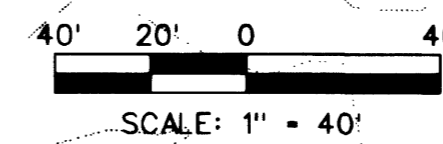


Call before you Dig  
1-800-227-2600

Call before you Overhead  
1-702-593-6111

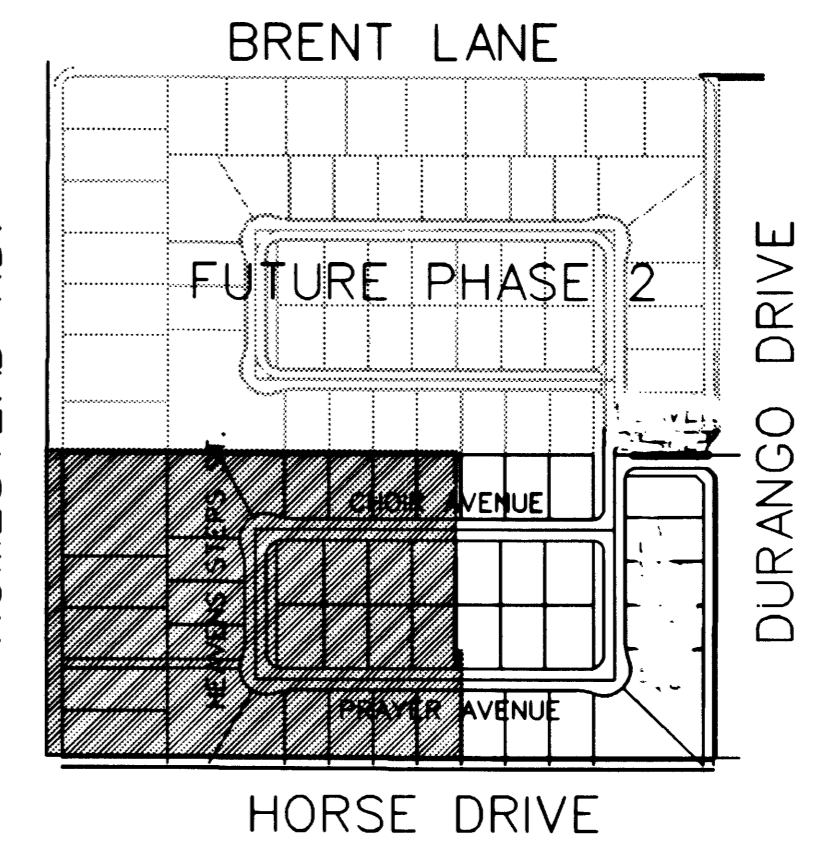


**BASIS OF BEARING**

NORTH 00°15'13" EAST, BEING THE BEARING OF THE EAST LINE OF THE NORTHEAST QUARTER (NE 1/4) OF THE NORTHEAST QUARTER (NE 1/4) OF THE NORTHEAST QUARTER (NE 1/4) OF SECTION 8, TOWNSHIP 19 SOUTH, RANGE 80 EAST, M.D.M. CLARK COUNTY, NEVADA AS SHOWN ON THE MAP IN FILE 87 OF SURVEYS, PAGE 83, OFFICIAL RECORDS OF CLARK COUNTY, NEVADA.

**BENCHMARK**

C.L.V. BENCHMARK: LV90-8NE5  
BLM BRASS CAP AT THE INTERSECTION OF DURANGO DRIVE AND IRON MOUNTAIN ROAD  
NAVD 1988 ELEV 771.9689 METERS (2532.70 FEET)



**LOCATION MAP**

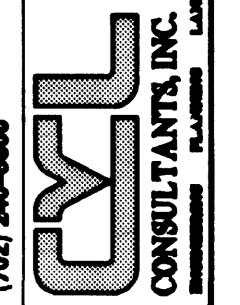
**GRADING CONSTRUCTION NOTES**

- 1 CONSTRUCT 2" AC PAVING OVER 4" TYPE II BASE ON 6" TYPE I BASE PER STANDARD DWG. NO. 207.
- 2 REMOVE EXISTING PAVEMENT AND CONSTRUCT 4" AC PAVING OVER 4" TYPE II AGGREGATE BASE ON 9" TYPE I OR II AGGREGATE BASE PER C.C. STD. DWG. #203.
- 3 CONSTRUCT "L" TYPE CURB PER CLARK COUNTY AREA STD. DWG. 216
- 4 CONSTRUCT 30" ROLL CURB PER CLARK COUNTY STD. DWG. #217A
- 5 CONSTRUCT RETAINING WALL PER CITY OF LAS VEGAS DEPT. OF BUILDING AND SAFETY STANDARDS
- 6 CONSTRUCT 8" WIDE CROSS GUTTER PER CLARK COUNTY AREA STD. DWG. NO. 228
- 7 CONSTRUCT 4" THICK CONCRETE SIDEWALK PER CLARK COUNTY AREA STD. DWG. NO. 234.
- 8 SIDEWALK UNDERDRAIN PER CLARK COUNTY AREA STD. DWG. NO. 236 (CONSTRUCTED BY SPRING MTN. RANCH PROJECT PER PLANS BY V.T.N.)
- 9 NOT USED
- 10 INSTALL WROUGHT IRON CRASH GATE PER CLV STANDARDS
- 11 CONSTRUCT FLOODWALL PER CITY OF LAS VEGAS DEPT. OF BUILDING AND SAFETY STANDARDS
- 12 CONSTRUCT SIDEWALK RAMP PER CLARK COUNTY STD. DWG. NO. 235, CASE I, "A" - 8.0', "B" - 8.0'
- 13 10.00" TYPE-C D.I., 24" BUBBLER 34.01 TC, 29.16 INV. OUT (WITH 2 GRATES) (CONSTRUCTED BY SPRING MTN. RANCH PROJECT PER PLANS BY V.T.N.)

I CERTIFY THAT THIS GRADING PLAN CONFORMS TO THE APPROVED DRAINAGE STUDY FOR THIS SITE ON FILE AT THE CITY OF LAS VEGAS.

*James W. Leland* 4/26/99  
JAMES W. LELAND P.E. 4932 DATE

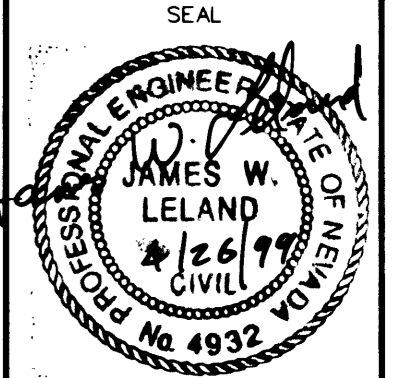
RICHMOND AMERICAN HOMES OF NEVADA  
7800 WEST MEAR STE. 212  
LAS VEGAS, NV 89128  
(702) 246-8000



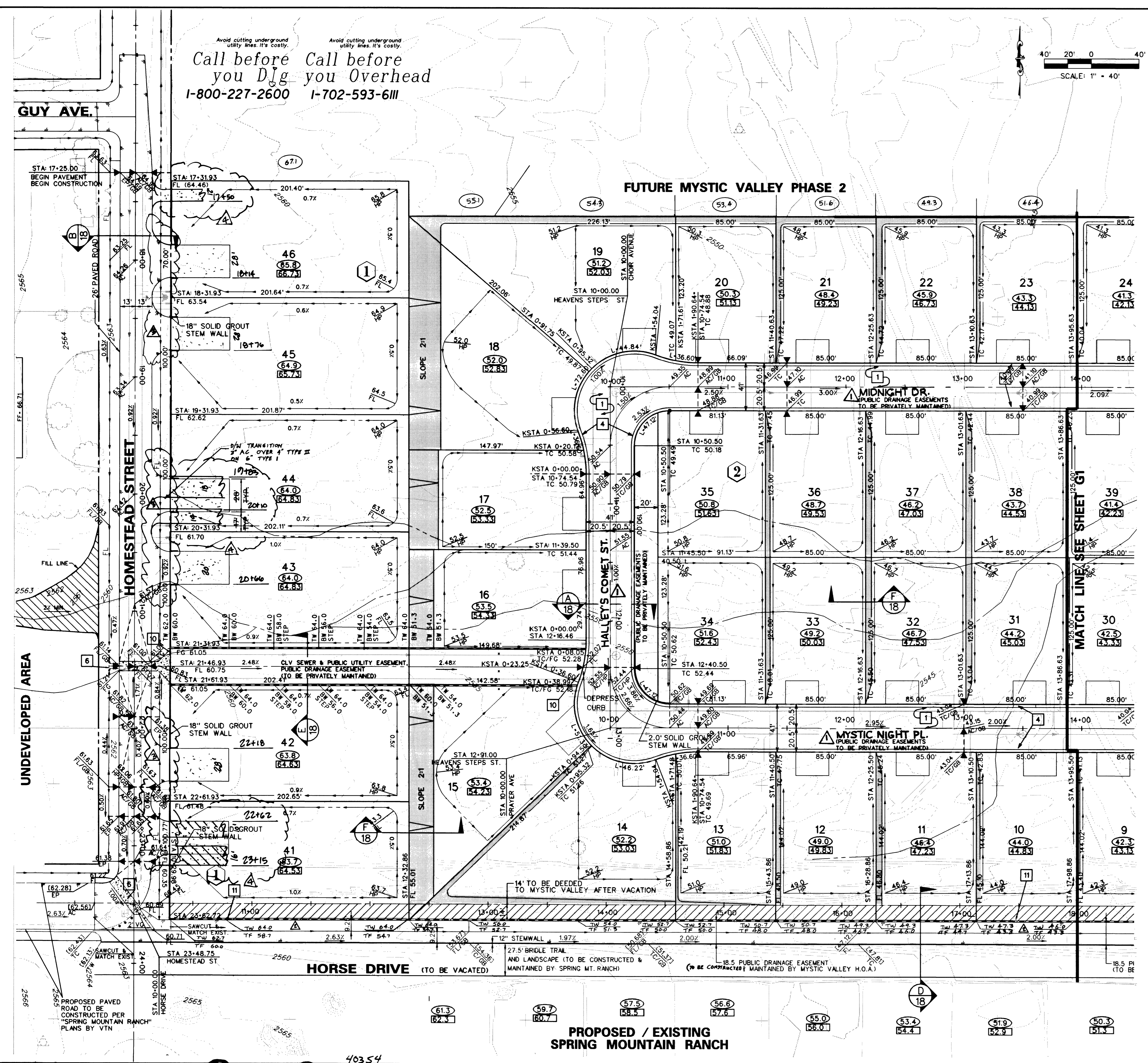
GRADING PLAN  
(WEST HALF)

MYSTIC VALLEY  
PHASE I

DRAWN BY:	G. HOWELL, W. KIM	11/4/98
DESIGNED BY:	E. SERRANO, M. BELEN	11/4/98
CHECKED BY:	J. W. LELAND	4/26/99
PROJECT NO.:	98-9031-03	SCALE: 1" = 40'



SHEET  
**G2**  
8 OF 18 SHEETS  
DRAWING NO.  
107V-4599-1



UNDEVELOPED AREA

15313 17018 17886 18349 40354