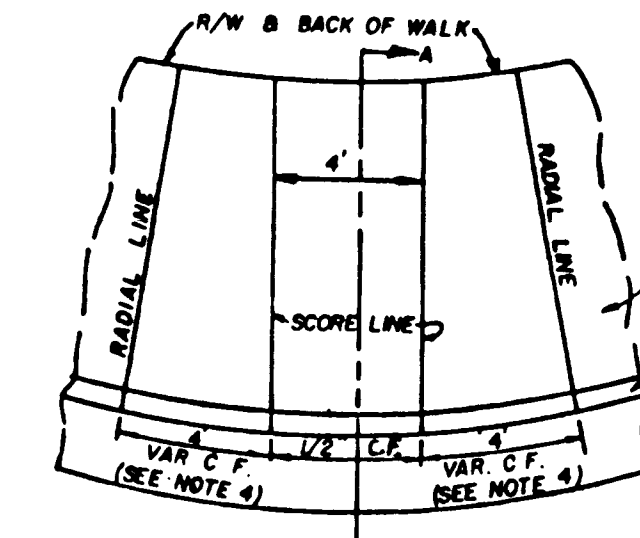
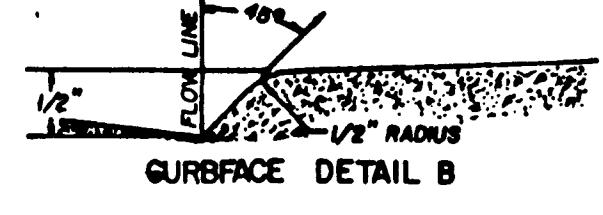


RAMP IN CURB RETURN
(SEE DETAIL A)

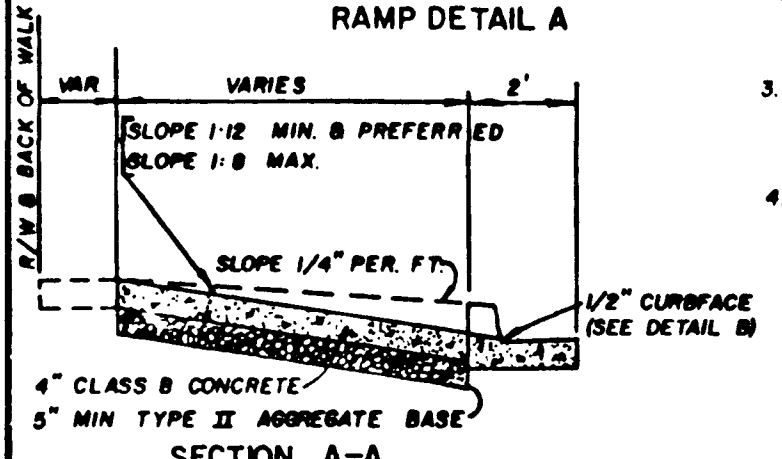
RAMP OUTSIDE CURB RETURN



RAMP DETAIL A



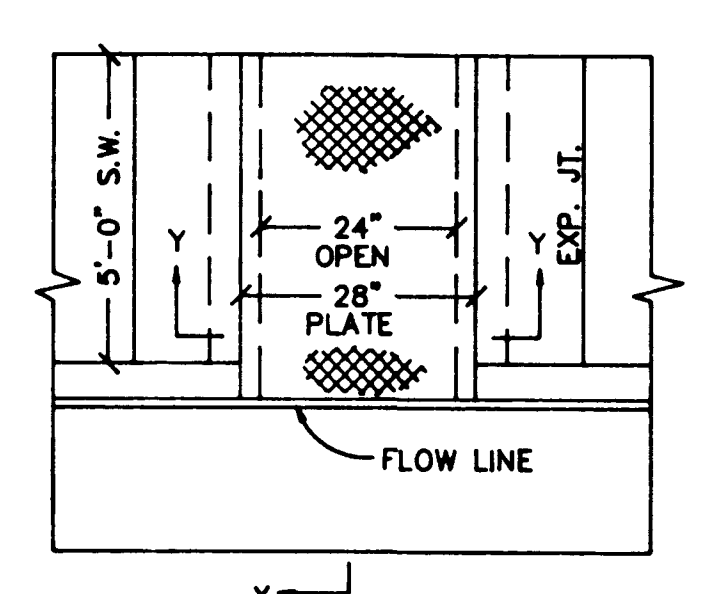
CURBSURFACE DETAIL B



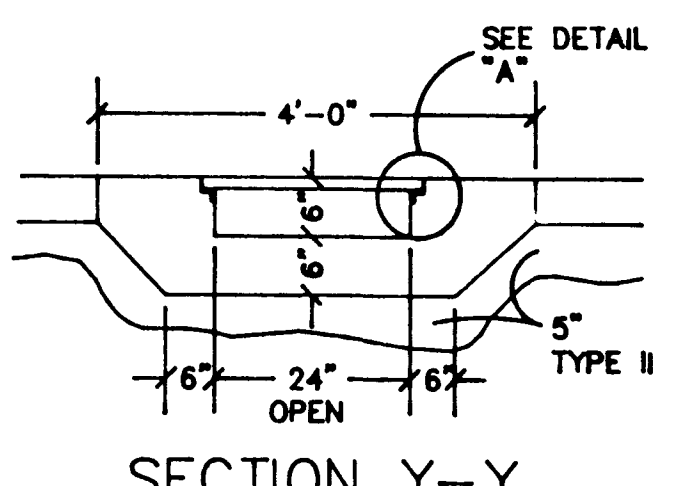
SECTION A-A

- 1 WHEELCHAIR RAMP SHALL BE LOCATED AT THE MIDPOINT OF CURB RADII UNLESS OTHERWISE INDICATED ON PLAN.
- 2 WHEELCHAIR RAMP OUTSIDE OF CURB RETURN SHALL BE LOCATED ADJACENT TO RETURN UNLESS OTHERWISE INDICATED ON PLAN.
- 3 RAMP SHALL BE CONSTRUCTED WITH A ROUGH BROOM FINISH TRANSVERSE TO THE SLOPE THE RAMP IN ORDER TO INDICATE A CHANGE OF TEXTURE WITH THE ADJACENT WALK.
- 4 CURB FLARE DISTANCE MAY BE INCREASED IF SLOPE IS GREATER THAN 1:8.

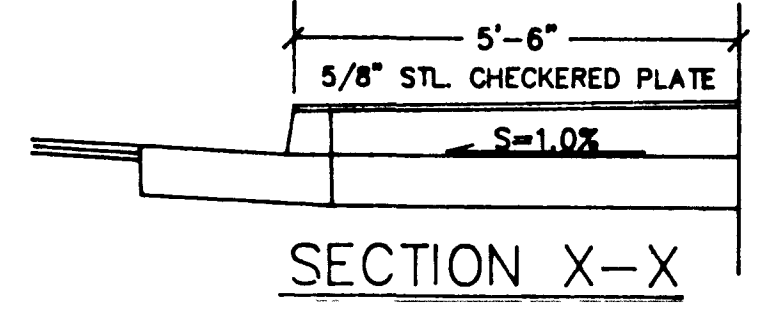
WHEELCHAIR RAMP		UNIFORM STANDARD DRAWINGS	
		CLARK COUNTY AREA	
ISSUED 1/78	REV.	DWG. NO. D.22A	PAGE 79A



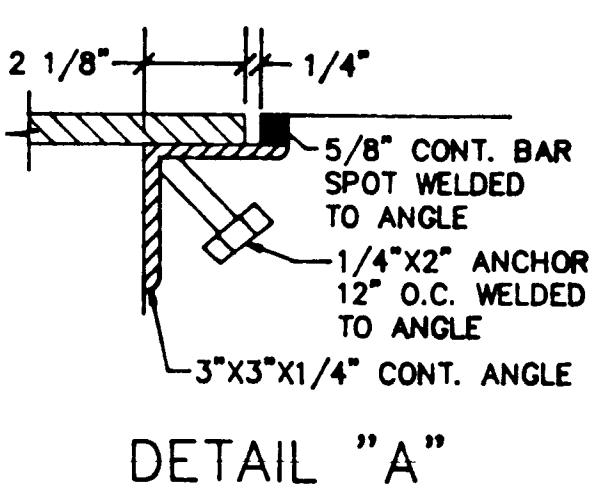
PLAN VIEW



SECTION Y-Y

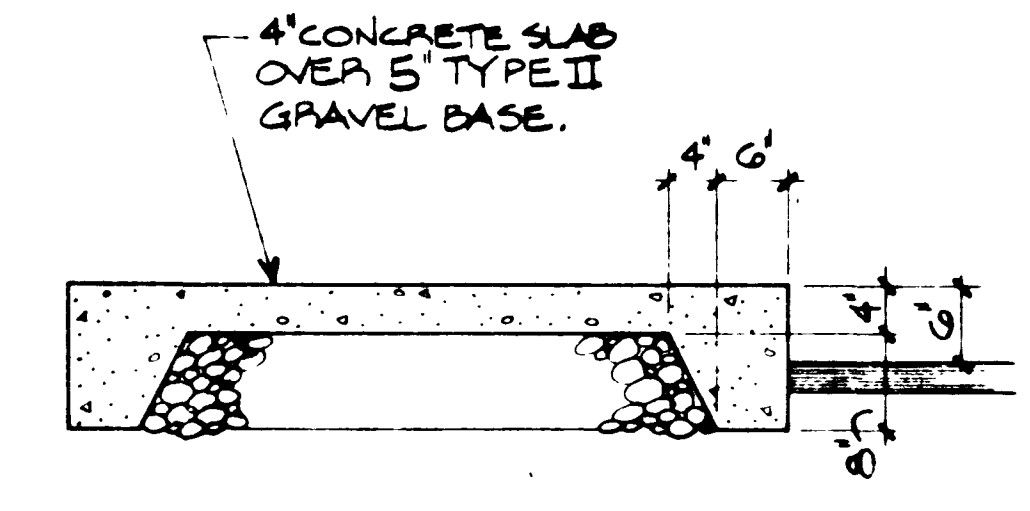


SECTION X-X

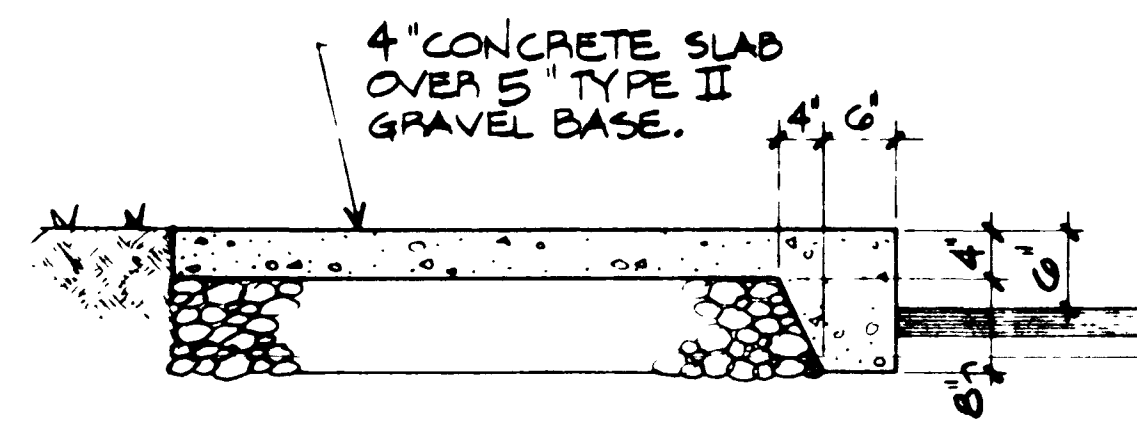


DETAIL "A"

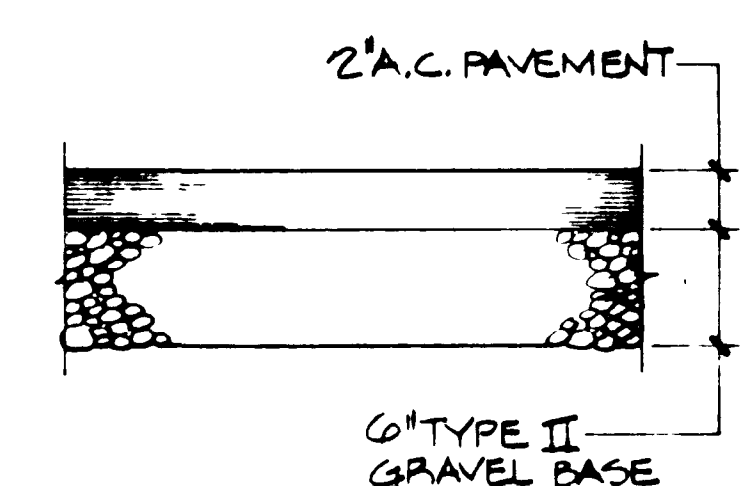
SIDEWALK UNDERDRAIN



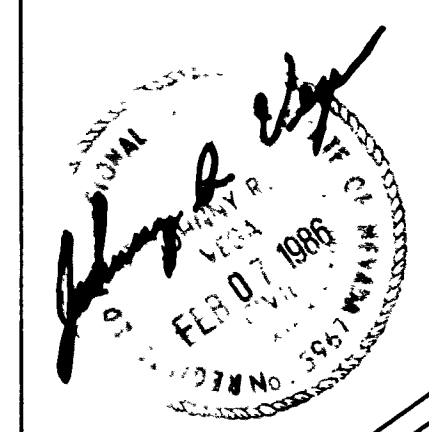
ONSITE SIDEWALK SECTION



ONSITE SIDEWALK SECTION



ONSITE PAVING SECTION



JOHN R. VEGA
CONSULTING ENGINEERS
MISSION WEST SHOPPING PLAZA
LORENZI & SILVERSTREAM

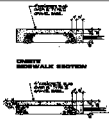
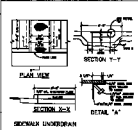
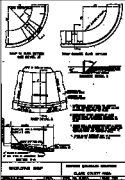
3301 W. SPRING MTK RD. SUITE 5
LAS VEGAS, NEVADA
89102 (702) 871-3363

DATE: 12-23-85
JOB NO: 850094
DRAWN BY: JFC/CADD
CHECKED BY: JRV

NOTES & DETAILS

SHEET C-5 OF 5

107-V1388
2-3-85




CITY OF LOS ANGELES
DEPARTMENT OF PUBLIC WORKS
CONCRETE DIVISION
157-1768
2-5-25