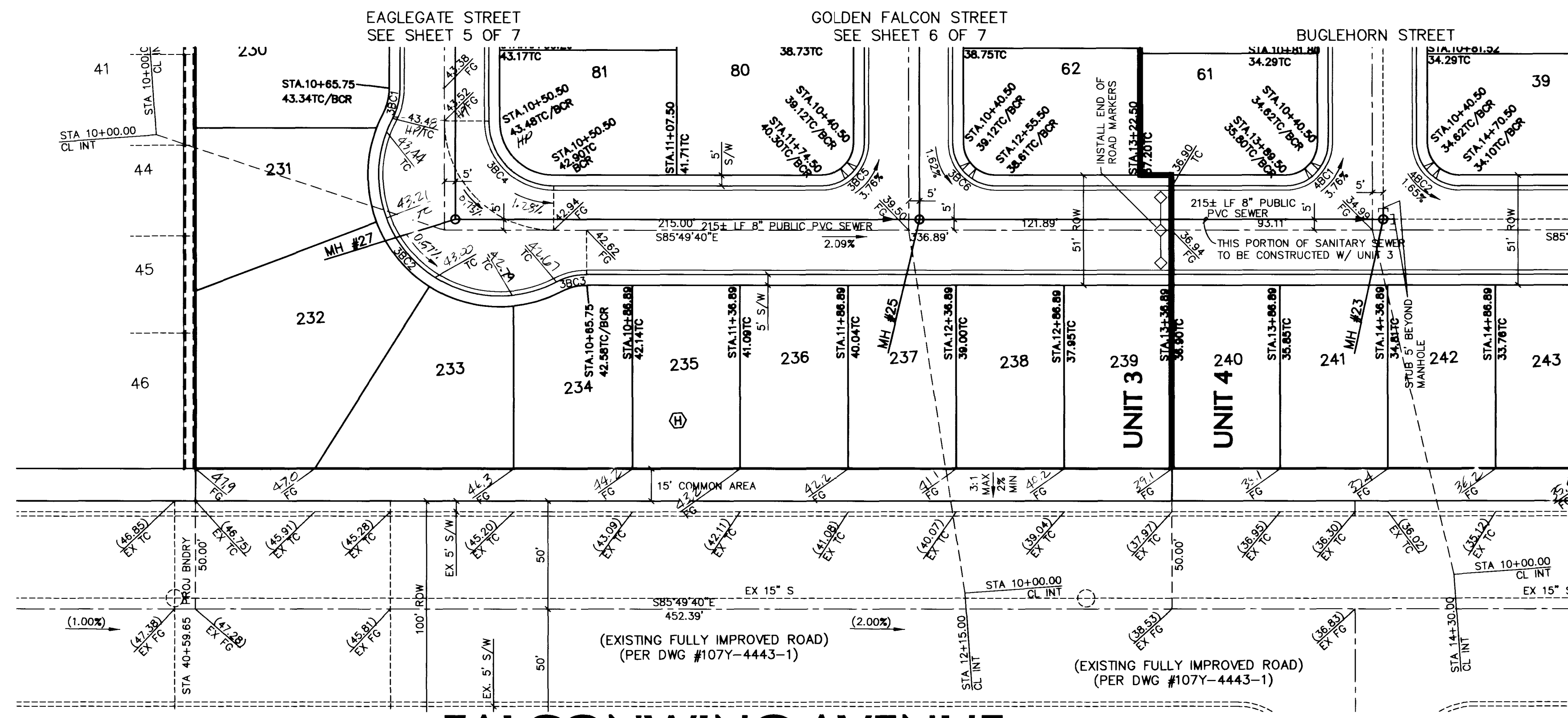
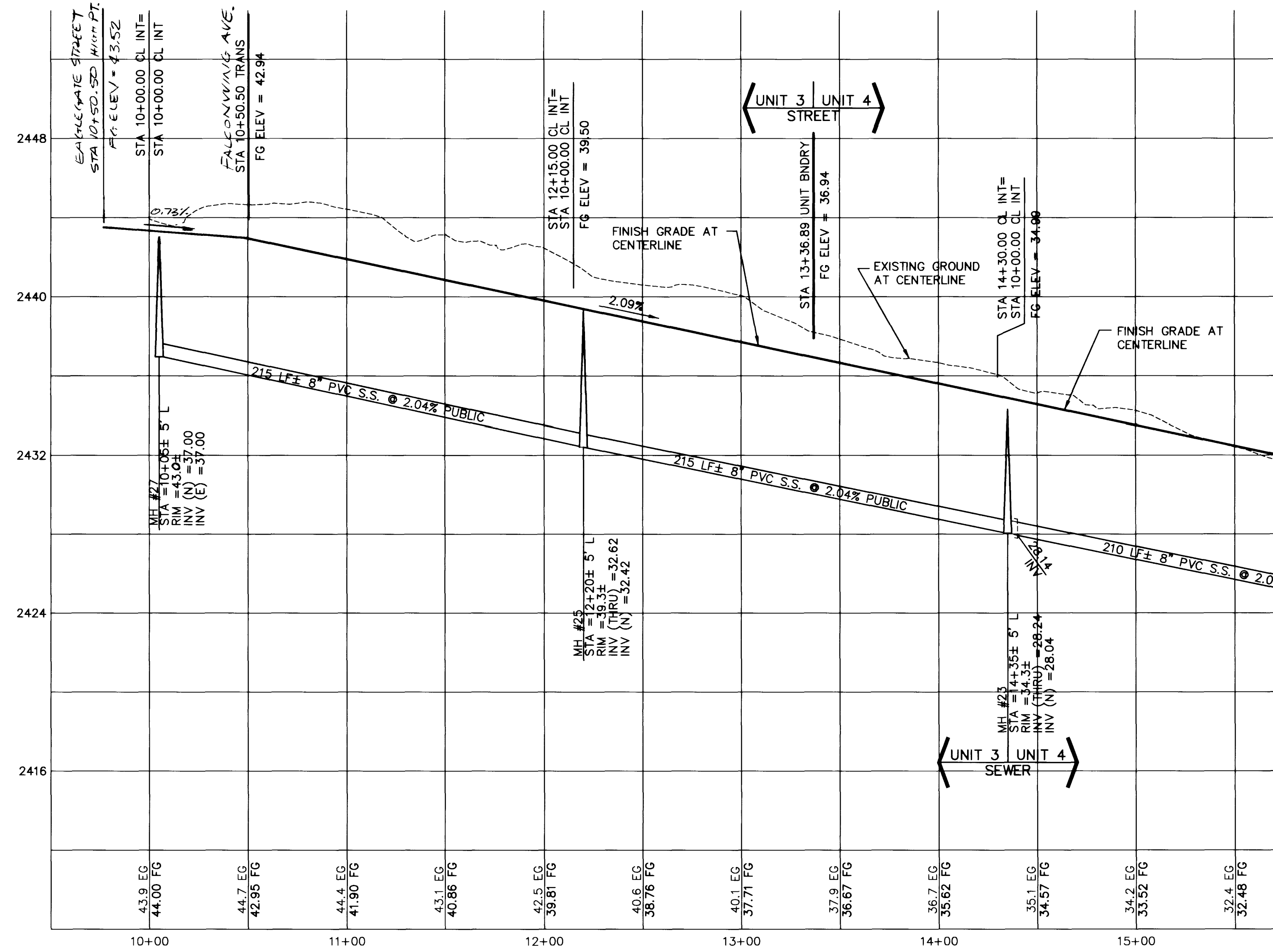
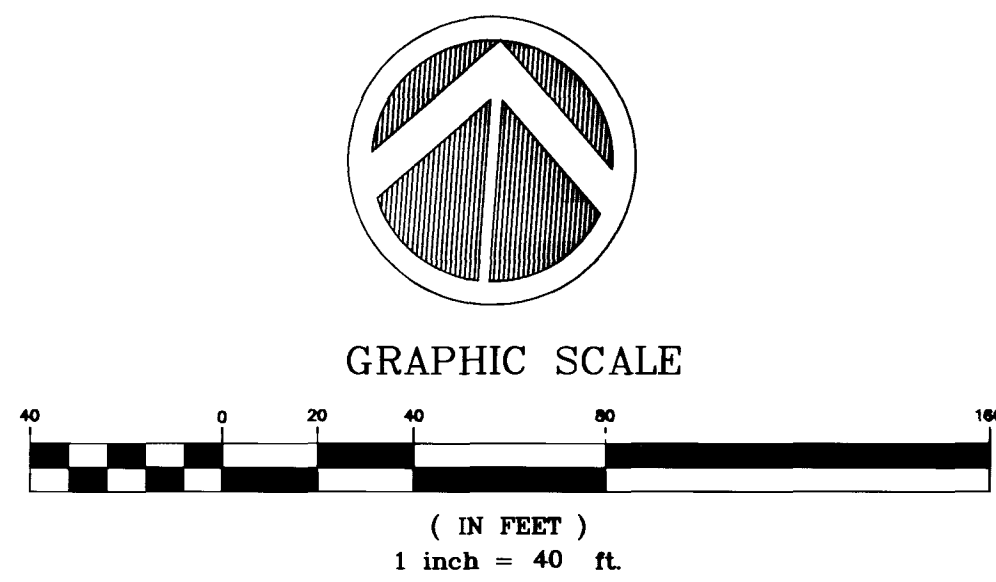


G:\SINKR\1070925.DWG\FALCONWG Wed Jun 26 15:25:10 1996 JDN RFP RIPLEY



BACK OF CURB CURVE DATA

CURVE	RADIUS	LENGTH	TANGENT	DELTA
3BC1	30.00'	14.61'	7.45'	27°54'00"
3BC2	56.00'	142.91'	182.09'	145°48'39"
3BC3	30.00'	14.61'	7.45'	27°54'20"
3BC4	30.00'	47.18'	30.00'	90°00'00"
3BC5	20.00'	31.42'	20.00'	90°00'00"
3BC6	20.00'	31.42'	20.00'	90°00'00"



NOTICE TO CONTRACTOR !
 EXISTING UTILITY LOCATIONS SHOWN HEREON ARE APPROXIMATE ONLY. IT SHALL BE THE CONTRACTOR'S RESPONSIBILITY TO DETERMINE THE EXACT VERTICAL AND HORIZONTAL LOCATION OF ALL EXISTING UNDERGROUND UTILITIES PRIOR TO COMMENCING CONSTRUCTION. NO REPRESENTATION IS MADE THAT ALL EXISTING UTILITIES ARE SHOWN HEREON. THE ENGINEER ASSUMES NO RESPONSIBILITY FOR UTILITIES NOT SHOWN OR UTILITIES NOT SHOWN IN THEIR PROPER LOCATION.

AVOID CUTTING UNDERGROUND UTILITIES. IT'S COSTLY.
CALL before you Dig
 1-800-227-2600
 UNDERGROUND SERVICE (USA)

S/W RAMP DATA	S/W RAMP DATA
● 3BC5 A = 12.0' B = 4.5' Z = 2.75'	● 3BC6 A = 8.0' B = 8.0' Z = 2.75'

NOTE: IF THE SEWER MAIN IS OVER THE WATER MAIN, OR LESS THAN 18 INCHES UNDER THE WATER MAIN, THEN CONCRETE ENCASE THE SEWER MAIN 10 FEET ON BOTH SIDES OF THE WATER MAIN, OR USE WATER QUALITY SEWER PIPE PER DESIGN & CONSTRUCTION STANDARDS FOR WASTEWATER COLLECTION SYSTEMS, 1991, CLARK COUNTY SANITATION DISTRICT STD. DWG. #SD-21.

BASIS OF BEARING

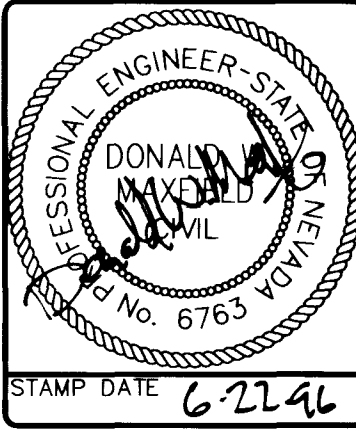
THE BEARING ALONG THE CENTERLINE OF ELKHORN ROAD BETWEEN CIMARRON ROAD AND BUFFALO DRIVE AS SHOWN IN ELKHORN SPRINGS - UNIT NO. 1 MAP IN BOOK 60 PAGE 72 OF PLATS ON FILE AT THE COUNTY RECORDER'S OFFICE, CLARK COUNTY, NEVADA.

BEARING NORTH 85°49'40" WEST

BENCHMARK

PROJECT DATUM=NGVD29 NO. 14 STATION 1LV9021N6 3" BRASS CAP USC & GS BM #113 3/4 MILE NORTH OF 1LV9028NNE6 50' FT. EAST OF OLD RAILROAD BED.
 ELEVATION = 2452.515
 EQUATION ELEVATION = 2452.515+2.401=2454.916 (TO NAVD88) (747.5266M=0.7318M=748.2584M)

NO.	DATE	BY	APPROV	REVISION DESCRIPTION



STAMP DATE 6-22-96
SOUTHWEST ENGINEERING
 LAND PLANNING • MAPPING • DEVELOPMENT
 5426 W. VEGAS DRIVE
 LAS VEGAS, NEVADA 89108
 (702) 646-9700

TITLE STREET/SEWER PLAN & PROFILE
 PROJECT FALCONWING AVENUE
NORTHERN LIGHTS at ELKHORN SPRINGS
 UNIT 3

WORK ORDER NO. 950925.3
 DESIGN BY M.J./C.M.
 DATE 3/25/96
 SCALE: HOR: 1" = 40'
 VERT: 1" = 4'
 CADFILES FALCONWG.DWG
 SHEET 7 of 7 SHEETS

11-30-47
 107Y-4460-3

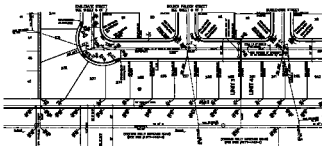


STATION MARK



WORK TO BE INSTALLED:
 1. 12" DIA. CONCRETE PIPES WITH 18" DIA. MANHOLES AT 50' INTERVALS ALONG THE ENTIRE LENGTH OF THE PROJECT.
 2. 12" DIA. CONCRETE PIPES WITH 18" DIA. MANHOLES AT 50' INTERVALS ALONG THE ENTIRE LENGTH OF THE PROJECT.
 3. 12" DIA. CONCRETE PIPES WITH 18" DIA. MANHOLES AT 50' INTERVALS ALONG THE ENTIRE LENGTH OF THE PROJECT.
 4. 12" DIA. CONCRETE PIPES WITH 18" DIA. MANHOLES AT 50' INTERVALS ALONG THE ENTIRE LENGTH OF THE PROJECT.

DATE: 11/15/2011
BY: DJG
CHECKED BY: [Signature]



FALCONWING AVENUE

UTILITY SYMBOLS:

Water	1" Dia. Pipe
Sewer	1" Dia. Pipe
Gas	1" Dia. Pipe

DATE: 11/15/2011

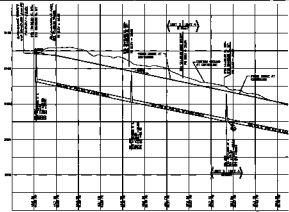
WORK TO BE INSTALLED:
 1. 12" DIA. CONCRETE PIPES WITH 18" DIA. MANHOLES AT 50' INTERVALS ALONG THE ENTIRE LENGTH OF THE PROJECT.
 2. 12" DIA. CONCRETE PIPES WITH 18" DIA. MANHOLES AT 50' INTERVALS ALONG THE ENTIRE LENGTH OF THE PROJECT.
 3. 12" DIA. CONCRETE PIPES WITH 18" DIA. MANHOLES AT 50' INTERVALS ALONG THE ENTIRE LENGTH OF THE PROJECT.
 4. 12" DIA. CONCRETE PIPES WITH 18" DIA. MANHOLES AT 50' INTERVALS ALONG THE ENTIRE LENGTH OF THE PROJECT.

BASIS OF BEARING:

STATIONING IS GIVEN BY THE END OF THE CURVE.
 ALL DIMENSIONS ARE IN FEET AND INCHES.
 ALL DIMENSIONS ARE TO THE CENTERLINE OF THE CURVE.
 ALL DIMENSIONS ARE TO THE CENTERLINE OF THE CURVE.
 ALL DIMENSIONS ARE TO THE CENTERLINE OF THE CURVE.

BENCHMARK:

STATIONING IS GIVEN BY THE END OF THE CURVE.
 ALL DIMENSIONS ARE IN FEET AND INCHES.
 ALL DIMENSIONS ARE TO THE CENTERLINE OF THE CURVE.
 ALL DIMENSIONS ARE TO THE CENTERLINE OF THE CURVE.
 ALL DIMENSIONS ARE TO THE CENTERLINE OF THE CURVE.



BACK OF CURB CURVE DATA:

STATION	ELEVATION	GRADE
0+00	100.00	0.00%
0+10	105.00	5.00%
0+20	110.00	10.00%
0+30	115.00	15.00%
0+40	120.00	20.00%
0+50	125.00	25.00%
0+60	130.00	30.00%
0+70	135.00	35.00%
0+75	140.00	40.00%

STREETWORKER PLAN & PROFILE
NORTHERN LIGHTS at ELG HORN SPRINGS

DATE: 11/15/2011
BY: DJG
CHECKED BY: [Signature]

SCALE: 1" = 10'-0"

PROJECT NO.: 11-10-11
DRAWING NO.: 11-10-11-01

DATE: 11-10-11

11-10-11