

**FRIDAY ESTATES, INC.**  
**CITY OF LAS VEGAS, NEVADA**

REV. DATE BY  
 5/10/97 TAP  
 2/11/97 DJF  
 3-14-98 CJP  
 11/11/97  
 11/11/97

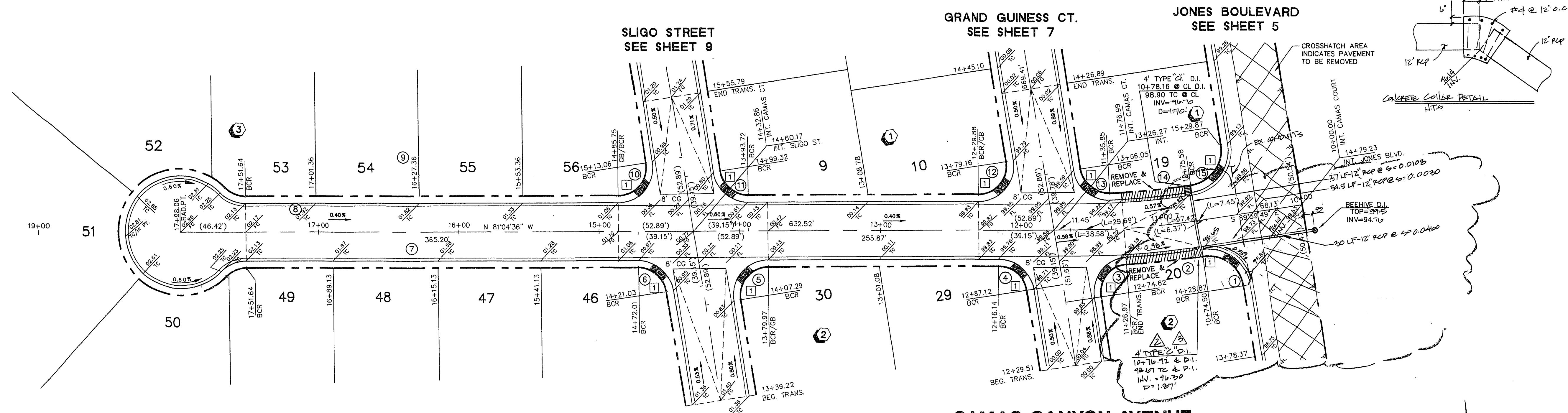
REV. PER. CLV COMMENTS  
 1  
 2  
 3  
 4

REVISION

DATE BY  
 11/11/97  
 11/11/97

CONSULTING ENGINEERS • PLANNERS • LAND SURVEYORS  
 2727 SOUTH RAINBOW BOULEVARD  
 LAS VEGAS, NEVADA 89102-5148 PHONE (702) 873-7550 FAX (702) 362-2597

**novada**



**STREET PLAN - PROFILE**  
**CAMAS CANYON AVENUE**  
**MIRAGE UNIT 1**

PROJECT

DATE **27 JUNE 96**

BY **CH/RDM/KOZ**

NO. **4888-1**

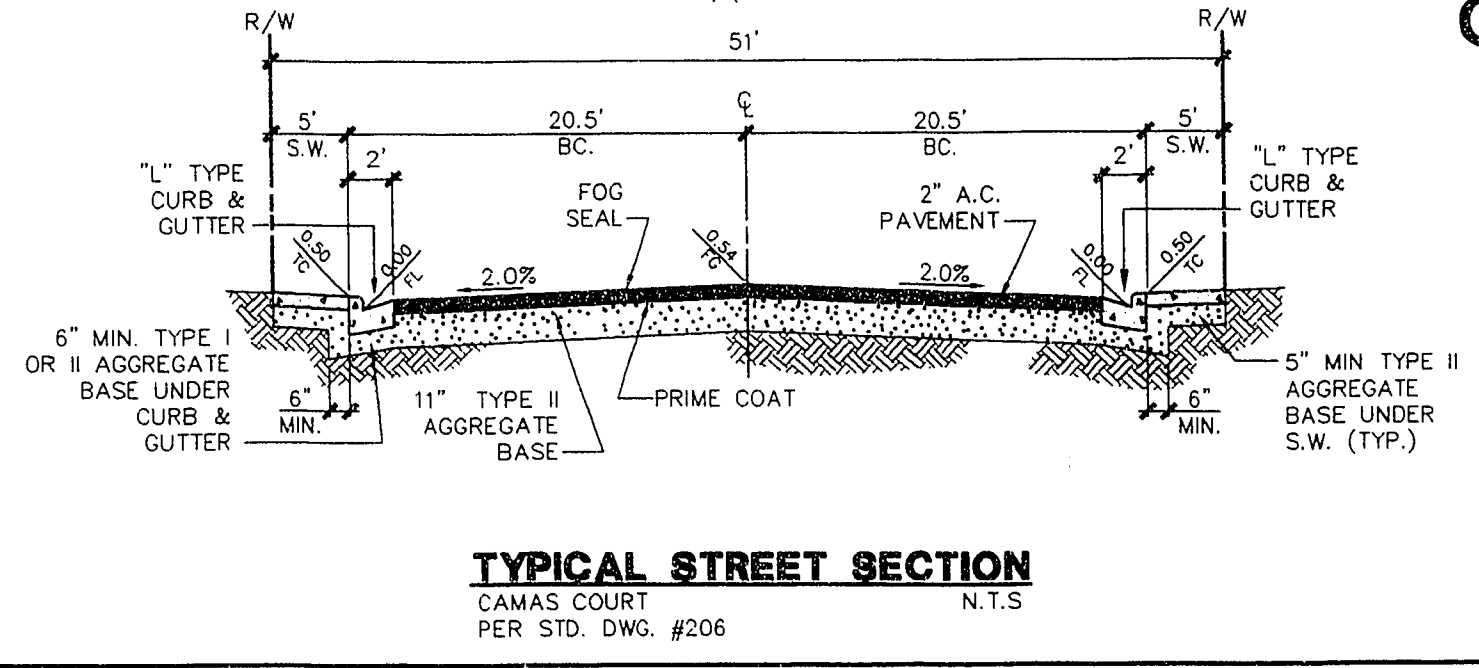
DATE **3-14-96**

SCALE: HORIZ. 1"=40'  
 VERT. 1"=4'

SHEET **6** OF 17 SHEETS

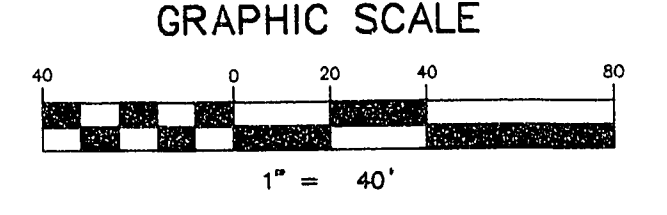
**BACK OF CURB CURVE TABLE**

CURVE	RADIUS	LENGTH	TANGENT	DELTA
(1)	30.00'	46.83'	29.71'	89°26'17"
(2)	670.50'	54.12'	27.07'	04°37'28"
(3)	25.00'	41.53'	27.37'	93°11'11"
(4)	25.00'	35.52'	21.51'	81°24'47"
(5)	25.00'	43.02'	29.06'	98°35'13"
(6)	25.00'	35.52'	21.51'	81°24'47"
(7)	15.00'	19.88'	10.50'	45°34'23"
(8)	40.00'	189.30'	39.21'	271°08'46"
(9)	25.00'	16.88'	10.50'	45°34'23"
(10)	25.00'	43.02'	29.06'	98°35'13"
(11)	25.00'	35.52'	21.51'	81°24'47"
(12)	25.00'	43.02'	29.06'	98°35'13"
(13)	25.00'	36.67'	22.52'	84°01'49"
(14)	629.50'	59.37'	28.21'	09°06'06"
(15)	30.00'	47.47'	30.55'	90°39'24"



**SIDEWALK RAMP DATA - CASE 1**

NO.	"A"	"B"
1	8'-0"	8'-0"



2 working days  
 Call before you Dig  
 1-800-227-2800

**BENCHMARK**  
 CITY OF LAS VEGAS BENCHMARK NO. 37-STA. 11V90 36NNWS  
 BEING A RIVET & PLATE IN THE SOUTH TOP OF CURB, ANN ROAD  
 & CALVERTS STREET.  
 ELEV. = 698.7119 (NAVD88 METERS)  
 ELEV. = 2292.36 U.S. SURVEY FEET (NAVD88 COMPUTED)