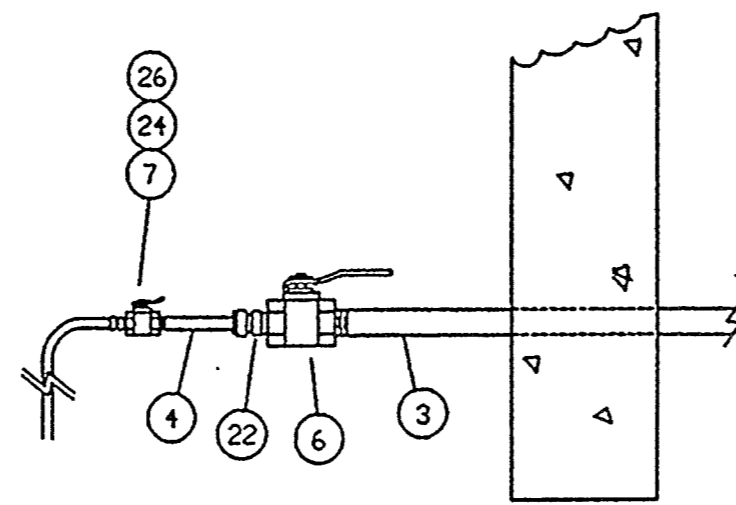


CONSTRUCTION NOTES:

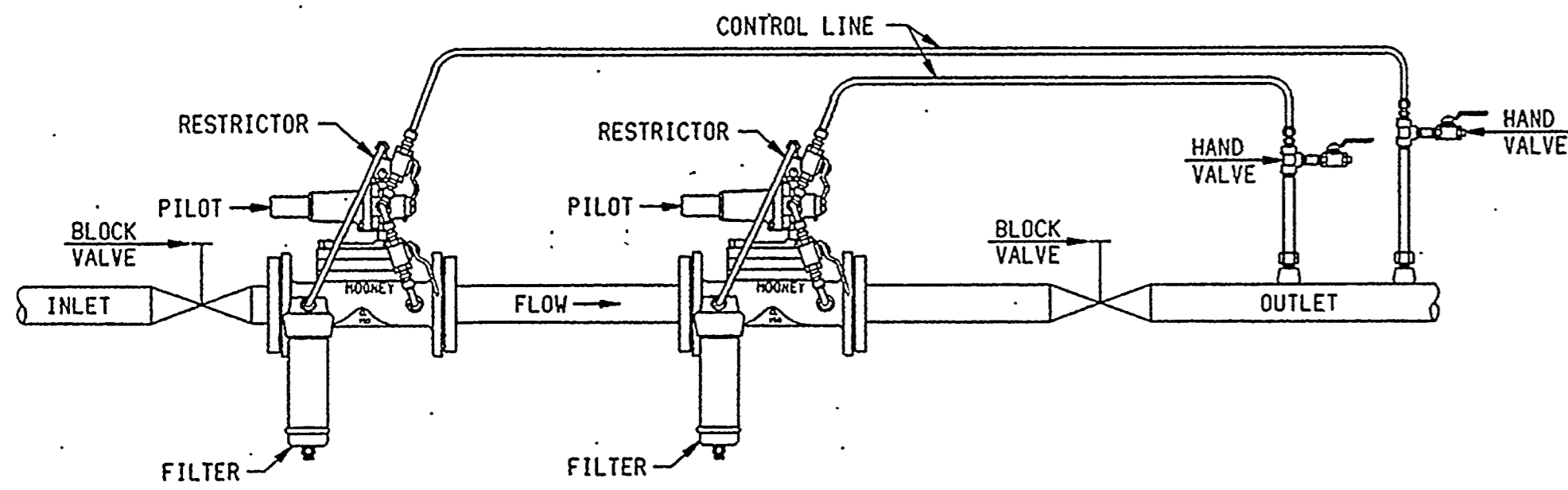
- 1. NON-CORROSIVE PAINT SHOULD BE USED FOR COATING EXPOSED PIPE IN REGULATOR VAULT.
- 2. ALL BURIED WELD JOINTS WILL BE WRAPPED WITH POLYETHYLENE TAPE MEETING SWG MS C-3 OR C-5 SPECIFICATIONS.
- 3. SUGGESTED GAS LOCATIONS ARE TO CLEAR SUBSTRUCTURES, LOCATE IN FIELD.
- 4. ALL PIPELINE CONSTRUCTION SHALL CONFORM TO APPLICABLE JURISDICTION SPECIFICATIONS.
- 5. DO NOT SCALE THIS DRAWING.

WORKER/MONITOR
 MINIMUM INLET PRESSURE 75 PSIG
 OUTLET PRESSURE (DELIVERY) 55 PSIG
 REGULATOR CAPACITY @ 70% 508 MCFH



CONTROL PIPING
 DETAIL "A"
 NTS

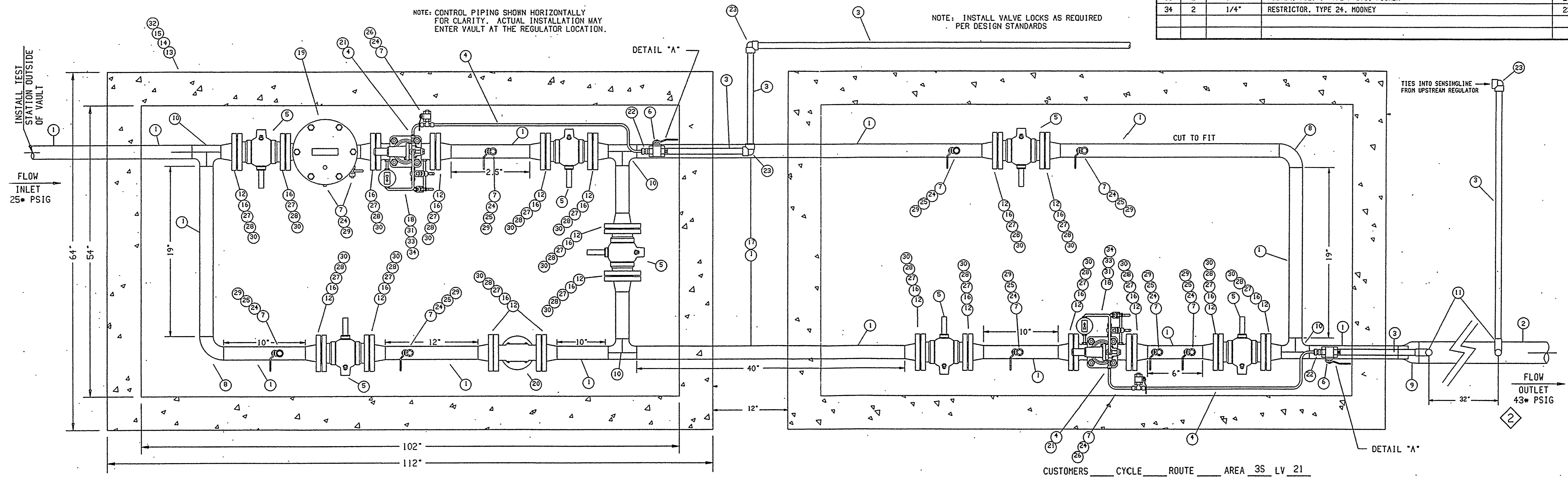
CALL BEFORE YOU DIG
 CAN YOU DIG IT!
 1-800-227-2600
 (48Hrs. Advance Notice Required)



CONTROL LINE DETAIL
 NTS

NOTE: CONTROL PIPING SHOWN HORIZONTALLY FOR CLARITY. ACTUAL INSTALLATION MAY ENTER VAULT AT THE REGULATOR LOCATION.

NOTE: INSTALL VALVE LOCKS AS REQUIRED PER DESIGN STANDARDS



CUSTOMERS _____ CYCLE _____ ROUTE _____ AREA 3S LV 21

SOUTHWEST GAS MATERIAL STRENGTH TEST PRESSURE REPORT

PROJECT: NEWPORT LOFTS REG STATION WR#: 202809
 X624Y512-1-DR

PAGE: _____
 DATE: 9/12/05

LOCATION: LAS VEGAS
 GRAND CENTRAL N/O CHARLESTON

DESIGN MAOP: 720 F= 0.50

CLASS: 4 E= 1.0

TEST MEDIUM: NITROGEN T= 1.0

SUMMARY:
 Footage to be tested: 100 FEET

Minimum test pressure: 1,080 PSIG

Maximum test pressure: 1,110 PSIG

Minimum test duration: 1 HOUR

COMMENTS:

COMPLETED BY: SHERIDAN GREEN DATE: 9/12/05

MATERIAL LIST

ITEM	QTY.	SIZE	DESCRIPTION	STOCK #
1	70'	4"	PIPE, BARE STL, API 5L GRADE B, ERW, 4-1/2" OD X .237" WT	100-0123
2	3'	6"	PIPE, STL, COATED, API 5L, .280 WT, X-46	100-0127
3	20	3/4"	PIPE, STL, COATED, SEAMLESS, 3/4", 1.050" OD X .113" INC	101-1242
4	7	3/8"	TUBING, STAINLESS STEEL, 3/8" OD X .035" WT	101-8400
5	7	4"	VALVE, BALL, STL, 4" W/ FLANGED ENDS, ANSI CLASS 300	120-3771
6	4	3/4"	VALVE, BALL, 3/4" W/ THREADED ENDS, 2000 PSIG MINIMUM	120-4123
7	12	1/4"	VALVE, BALL, 1/4" W/ THREADED ENDS, 2000 PSIG MINIMUM	120-4110
8	2	4"	ELBOW, STL WELD, 4", 90 DEGREE, STD WT, GRADE B	140-4057
9	1	6"x4"	REDUCER, STL WELD, 6" X 4", 0.280" WT, PREQUALIFIED	140-5054
10	4	4"	TEE, STL WELD, 4", STD WT, GRADE B	140-5375
11	2	3/4"x1"	TEE, AUTOPERF. SERVICE, 3/4" X 1", 1/2" INLET, 3	160-8008
12	18	4"	FLANGE, STL, WELD NECK, 4", ANSI CLASS 300, RF	162-6696
13	2	54"x102"x48"	VAULT, BOTTOM, 54" X 102" X 48", JENSEN PRECAST SWG4878	163-8150
14	2	54"x102"x24"	VAULT, EXTENSION (RISER), 54" X 102" X 24", JENSEN PRECAST SWG4686	163-8151
15	2	54"x102"x6"	VAULT, COVER SLAB, 54" X 102" X 6", JENSEN PRECAST SWG4686	163-8155
16	20	4"	GASKET, INSULATING, RING TYPE F, ANSI 300, 4"	170-8890
17	2	4"	WRAP, PIPE, POLYETHYLENE TAPE, 4" X 50', 35 MILS, BL	781-8669
18	2	4"	REGULATOR, MOONEY FLOWGRID, SINGLE PORT, 4", ANSI 300	230-1909
19	1	4"	FILTER, 4", FLANGED, ANSI 300, RAISED FACE, 10 MICRON	250-3056
20	1	4"	STRAINER, TEE TYPE, 4", STL, ANSI 300, FLANGE X FLANGE, 40 MESH SCREEN	250-5704
21	2	3/8"x1/4"	CONNECTOR, MALE, 3/8" X 1/4", STAINLESS STEEL, TUBE	850-8733
22	2	3/8"x3/4"	CONNECTOR, MALE, 3/8" X 3/4", STAINLESS STEEL, TUBE	850-8739
23	3	3/4"	ELBOW, FORGED STL, SOCKET WELD, 3/4" 90 DEGREE, 3000	850-9042
24	12	1/4"	PLUG, FORGED STL, SQUARE HEAD SOLID, 1/4", THREADED	850-9708
25	8		THREAD-O-LET, FORGED CARBON STL, 1-1/4" TO 2-1/2"	850-9400
26	2	3/8"x1/4"	TEE, STAINLESS STEEL, 3/8" X 1/4", MALE BRANCH TUBE	850-9415
27	160	3/4"x4-1/2"	BOLT, STUD, B-7, 3/4" X 4-1/2", FULL THREAD	851-8297
28	320	3/4"	WASHER, FLAT, 3/4", ZINC PLATED STL, TYPE SAE	850-9360
29	10	1/4"x2"	NIPPLE, STL, XH, SCHEDULE 80, 1/4" X 2", THREADED	852-0701
30	320	3/4"	NUT, HEAVY HEX, 3/4", ASTM A-194, GRADE 1 OR 2 H FOR STUD BOLTS	851-9132
31	2	1/4"	PILOT, REG, MOONEY SERIES 20, BLACK SPRING, 25-90 PSIG	230-1778
32	2	54"x102"x3-1/2"	VAULT, COVER, GALVANIZED, 54" X 102" X 3-1/2"	163-8500
33	2	1/4"	FILTER, PILOT, TYPE P 593, FISHER	230-2009
34	2	1/4"	RESTRICTOR, TYPE 24, MOONEY	230-2140

SEE SHEET 1		AS-BUILT DRAWING-PRESSURE TEST DATA		VISUAL INSPECTION CERTIFICATION		CONSTRUCTION		ISOLATION AREA		V. R. NO.		ENGINEER/TECHNICIAN	
DESCRIPTION		TEST MEDIUM		I HAVE VISUALLY INSPECTED ALL HEATED FUSIONS, SOLVENT CEMENT, MECHANICAL JOINTS, AND WELDS THAT I HAVE PERFORMED		INSPECTOR		HP-125-27		202809		SHERIDAN GREEN	
BY		TEST METHOD		NAME		FOREMAN		DIST-95		ATLAS #/TITLE		PHONE 365-2014	
DATE		GAUGE/CHART		DATE		REVIEWED BY		LOCATION		SEC 33		KELLI JACKSON	
APPRD.		WATER/GAUGE/PRESS REC SH		DATE		PERMIT INFORMATION		T20S R61E		x624y512		PHONE 528-7708	
REVISIONS		START		DATE		CITY OF LAS VEGAS		ROWENA		DATE 9/12/05		PROJECT CONTACT ROCKY DERRICK	
UNIT NO.		END		DATE		POSTED BY		CHKD. BY		TITLE		702-434-4346	
UNIT TYPE		PERFORMED BY		DATE		POSTING CC'D BY		APPVD. BY		NEWPORT LOFTS REG STATION		SCALE NTS	
INSTL. PROPOSED		DATE		DATE		DATE		DATE		X624Y512-1DR		DATE 9/12/05	
RET. COMPLETED		DATE		DATE		DATE		DATE		GRAND CENTRAL PKWY, N/O CHARLESTON AVE.		FILENAME: 21r_202809_1	
PROPERTY UNITS		DATE		DATE		DATE		DATE		DATE		DATE	

