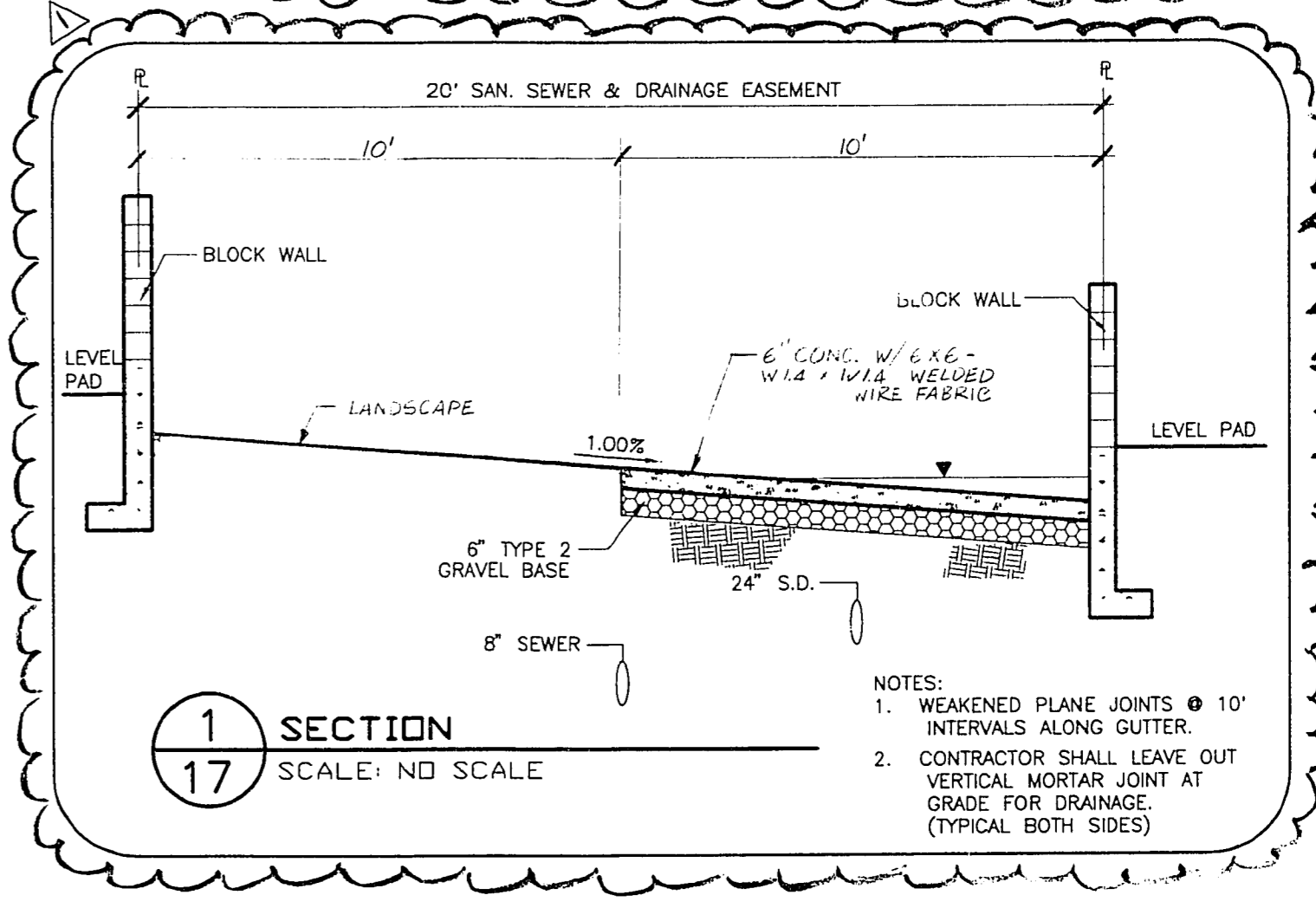
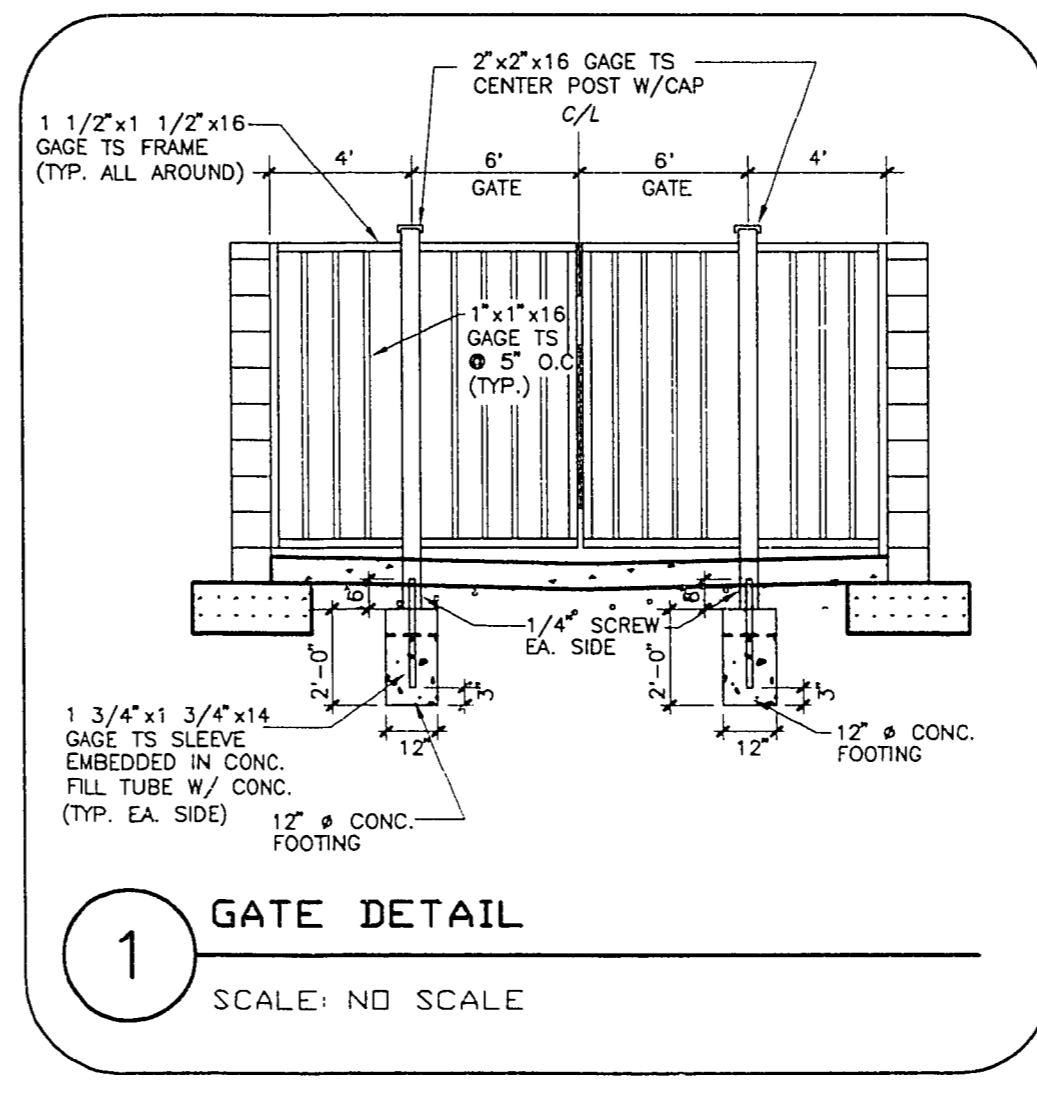
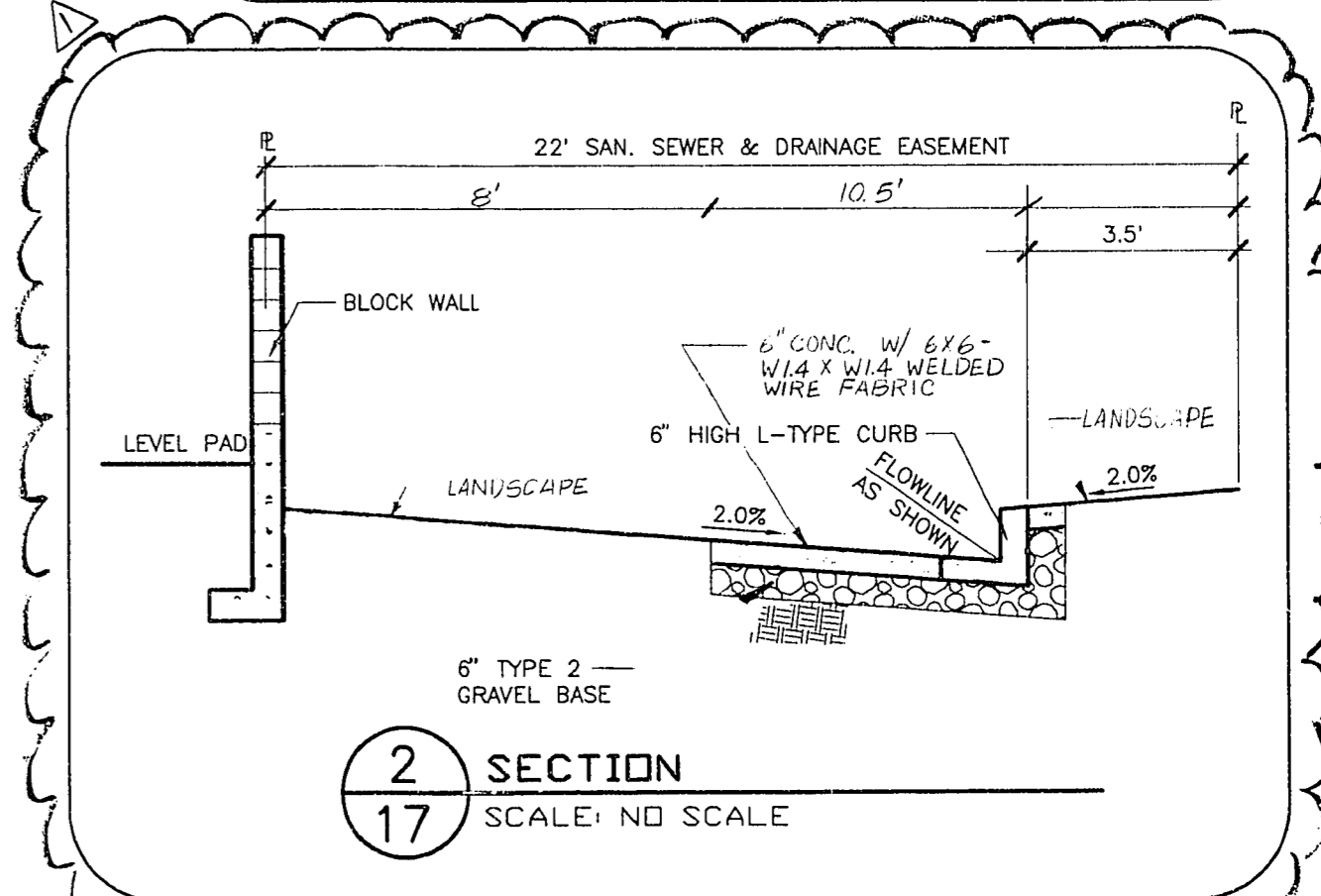
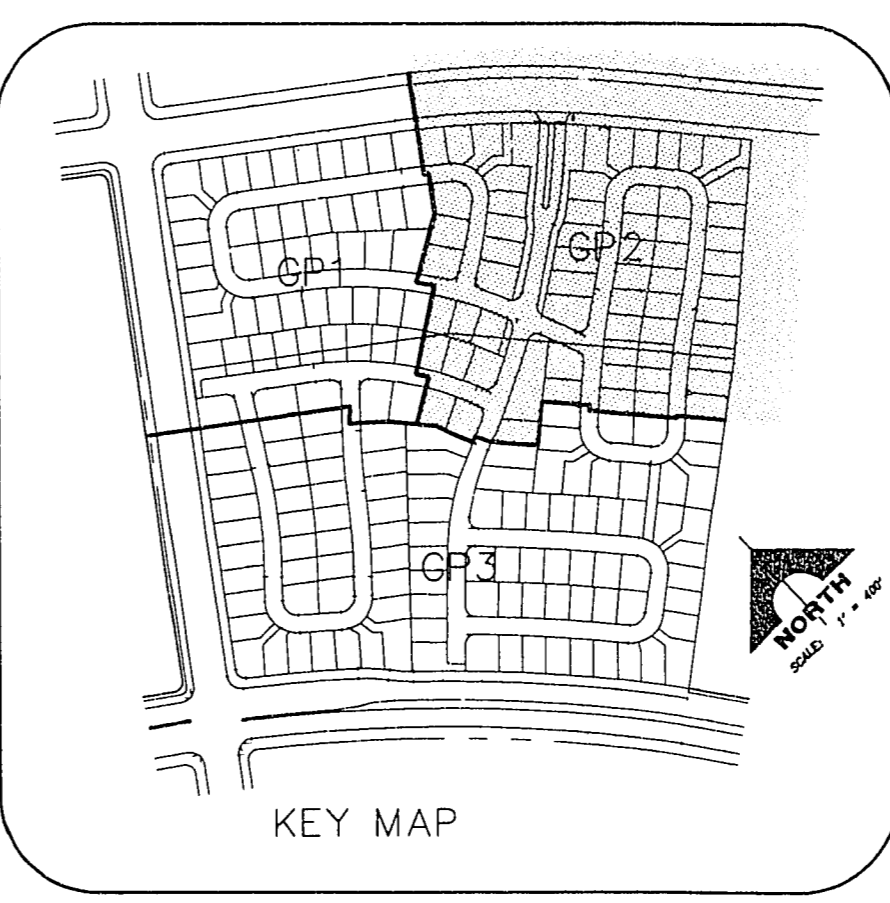


**LEGEND**

---	SUBDIVISION BOUNDARY	13	LOT NUMBER
---	EASEMENT LINE	14	BLOCK NUMBER
---	STREET CENTERLINE	BCR	BACK OF CURB RETURN
---	CONCRETE CURB & GUTTER	EX	EXISTING
---	EXISTING IMPROVEMENTS	FL	FLOW LINE
---	EXISTING GROUND CONTOUR LINE	HP	HIGH POINT
---	DRAINAGE FLOW LINE	R/W	RIGHT-OF-WAY
---	BLOCK WALL	TC	TOP OF CURB
---	EXISTING BLOCK WALL	---	PAD SETBACK LINE
56.8	PAD ELEVATION	---	RETAINING WALL
△	RETAINING WALL HEIGHT	---	GRADE BREAK

- WALL NOTES**
- 1.- APPROVAL OF THESE PLANS BY THE CITY ENGINEER DOES NOT PERTAIN TO CONSTRUCTION OF NEW WALLS (RETAINING OR NON-RETAINING) OR MODIFICATIONS TO EXISTING WALLS.
  - 2.- ALL WALLS, NEW OR EXISTING, ARE REVIEWED BY THE CITY ENGINEER FOR GRADING RELATIONSHIPS ONLY.
  - 3.- ALL WALLS, RETAINING AND NON-RETAINING, MUST BE APPROVED AND A PERMIT OBTAINED FROM THE DEPARTMENT OF BUILDING AND SAFETY.
  - 4.- FOR SIGHT DISTANCE REQUIREMENTS AT INTERSECTIONS SEE SUMNER/DWG. NO. DC-3.



CERTIFY THAT THIS GRADING PLAN IS IN CONFORMANCE WITH THE CITY OF LAS VEGAS FOR THIS PROJECT.

REV	DATE	DESCRIPTION
1	11/20/15	REVISED PER ESTIMATE DETAILS

BENJAMIN C. WALLACE  
 PROFESSIONAL ENGINEER - STATE OF NEVADA  
 No. 7836  
 6-1-95

RECOMMENDED BY  
 BENJAMIN C. WALLACE  
 PROFESSIONAL ENGINEER - STATE OF NEVADA  
 No. 7836  
 6-1-95

G.C. WALLACE, INC.  
 Engineering/Architecture  
 1555 SOUTH RAINBOW BLVD., LAS VEGAS, NEVADA 89102  
 (702) 363-1200

**NIGRO ASSOCIATES**  
**SAN MARINO**  
**GRADING PLAN 2**

SHEET  
**17**  
 OF 20 SHEETS

662.500D

PLOTTED 05/31/95  
GP2.DWG

11-20-15/ VOID 107Y-4384